

# 1067 Forest Parkway

1067 Forest Parkway, Forest Park, GA 30297

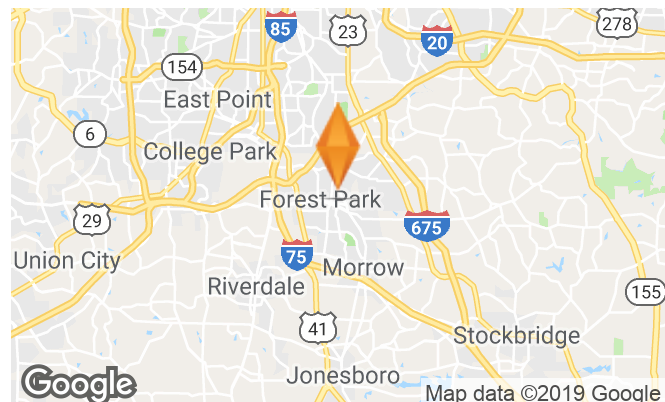
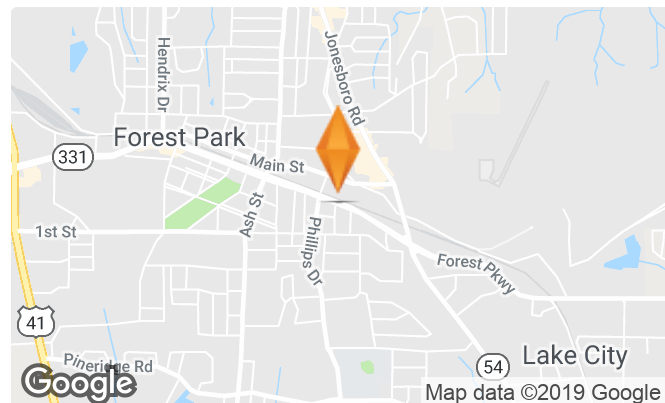
FOR LEASE



## 1,171 SF AVAILABLE

### PROPERTY HIGHLIGHTS

- Great endcap opportunity with plenty of parking
- Strong signage opportunity along Forest Parkway and 17,205 VPD
- Over 146,000 People Living Within 5 miles
- Only minutes to Hartsfield Jackson International Airport and Downtown Atlanta
- Easy, convenient access to I-75, I-85 and I-285



DEMOGRAPHICS	1 MILE	5 MILES	10 MILES
Total Households	1,804	49,432	237,602
Total Population	6,014	145,671	653,550
Average HH Income	\$42,355	\$44,641	\$51,785

For More Information, Contact

**BROOKE MULLMAN** | 404.977.5880 | [bmullman@skylineseven.com](mailto:bmullman@skylineseven.com)

800 MT. VERNON HIGHWAY NE | SUITE #425 | 404.977.5880 | [SKYLINESEVEN.COM](http://SKYLINESEVEN.COM)

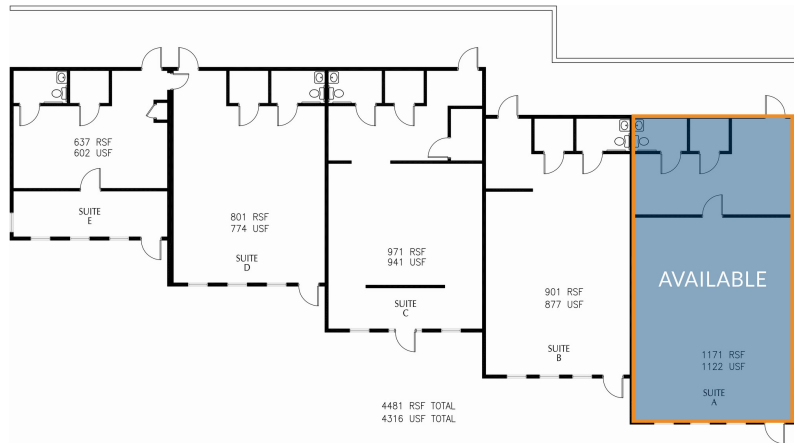


# 1067 Forest Parkway

1067 Forest Parkway, Forest Park, GA 30297

FOR LEASE

SUITE	TENANT	UNIT SIZE (SF)
A	AVAILABLE	1,171
B/D/E	Cakes by LaMeeka	2,339
C	Studio 211	971



1067 Forest Pkwy  
Forest Park, GA 30297



For More Information, Contact  
**BROOKE MULLMAN** | 404.977.5880 | [bmullman@skylineseven.com](mailto:bmullman@skylineseven.com)

800 MT. VERNON HIGHWAY NE | SUITE #425 | 404.977.5880 | [SKYLINESEVEN.COM](http://SKYLINESEVEN.COM)

