

FOR LEASE

445 SOUTH STREET

Morristown, NJ



AVAILABLE SPACE

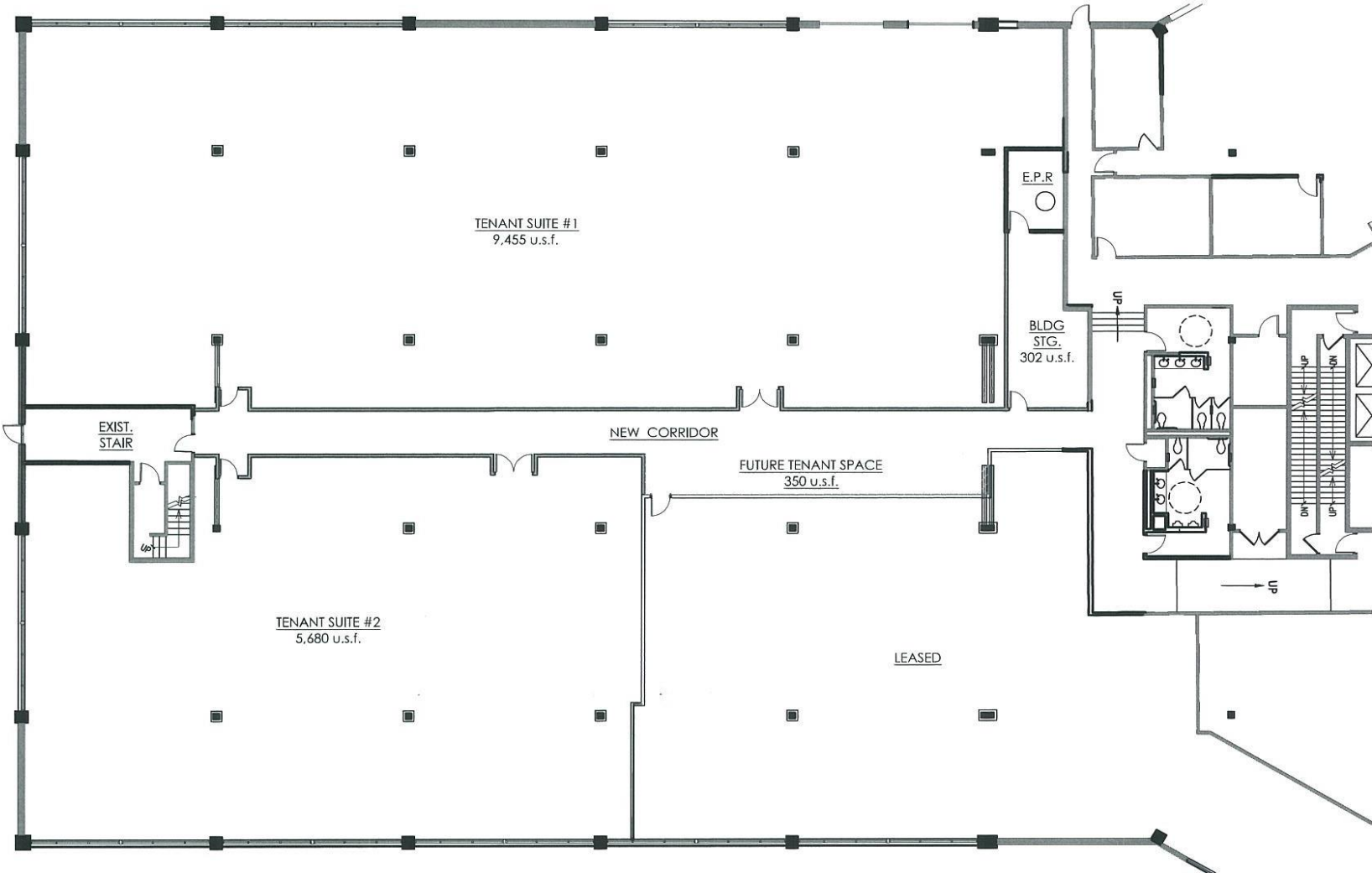
FLOOR	SF
1 ST Floor	5,895 SF
1 st Floor	21,144 SF
3 rd Floor`	13,000 SF
TOTAL	40,039 SF

BUILDING INFORMATION

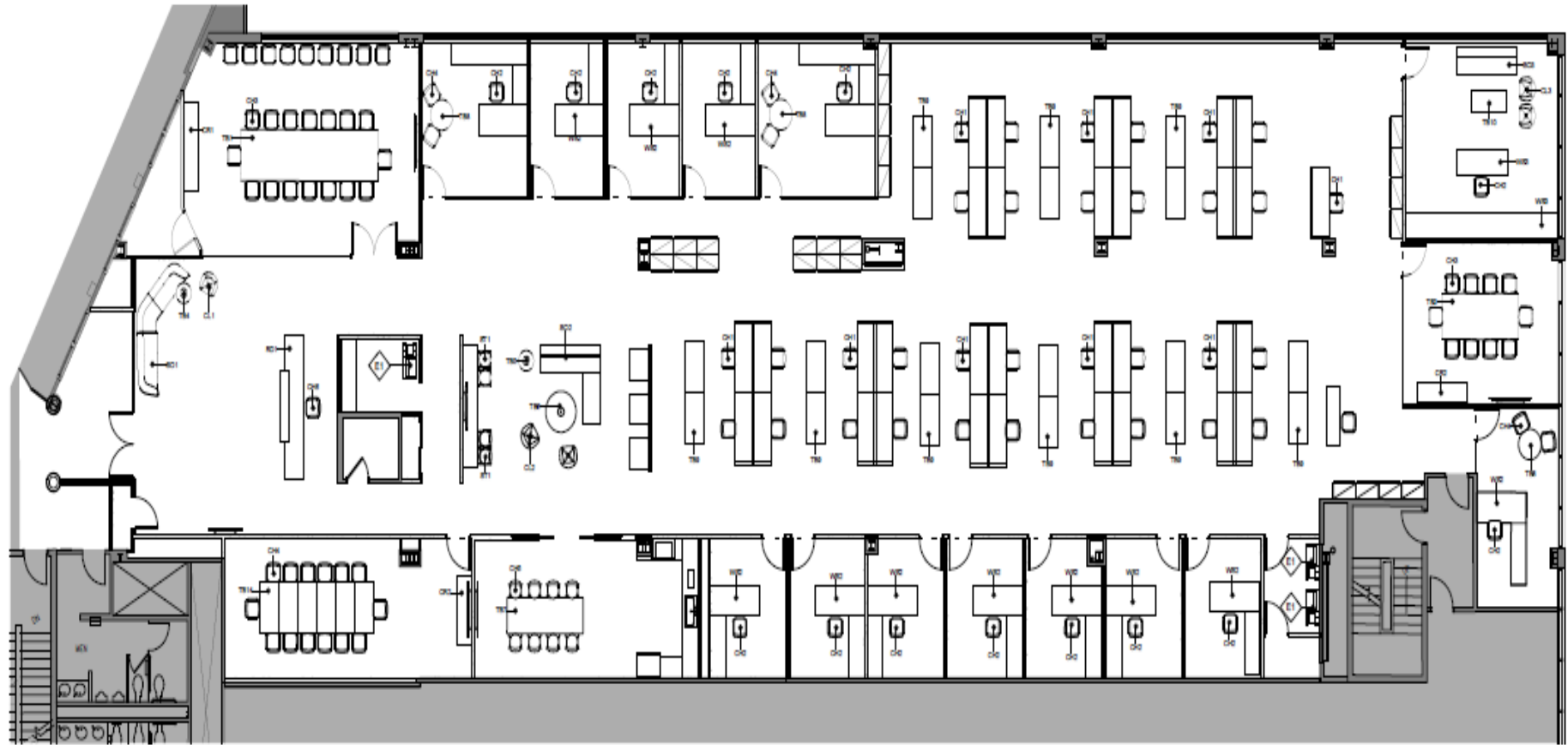
- 320,274 RSF – 4 Floors
- Built in 1982 – Renovated in 2008
- 4/1,000 SF parking
- 6 Passenger & 1 Freight Elevators
- Food Service
- Fitness Center



First Floor Plan



Third Floor Plan



445 SOUTH STREET

PLEASE CONTACT:

Dorothy Chuang

First Vice President
+1 201 712 5835 – Office
+1 201 914 8642 - Cell
dorothy.chuang@cbre.com

Daniel F. Casey III

First Vice President
+1 201 712 5808 – Office
+1 973 224 3817 - Cell
daniel.case@cbre.com

© 2022 CBRE, Inc. All rights reserved. This information has been obtained from sources believed reliable, but has not been verified for accuracy or completeness. You should conduct a careful, independent investigation of the property and verify all information. Any reliance on this information is solely at your own risk. CBRE and the CBRE logo are service marks of CBRE, Inc. All other marks displayed on this document are the property of their respective owners, and the use of such logos does not imply any affiliation with or endorsement of CBRE. Photos herein are the property of their respective owners. Use of these images without the express written consent of the owner is prohibited.