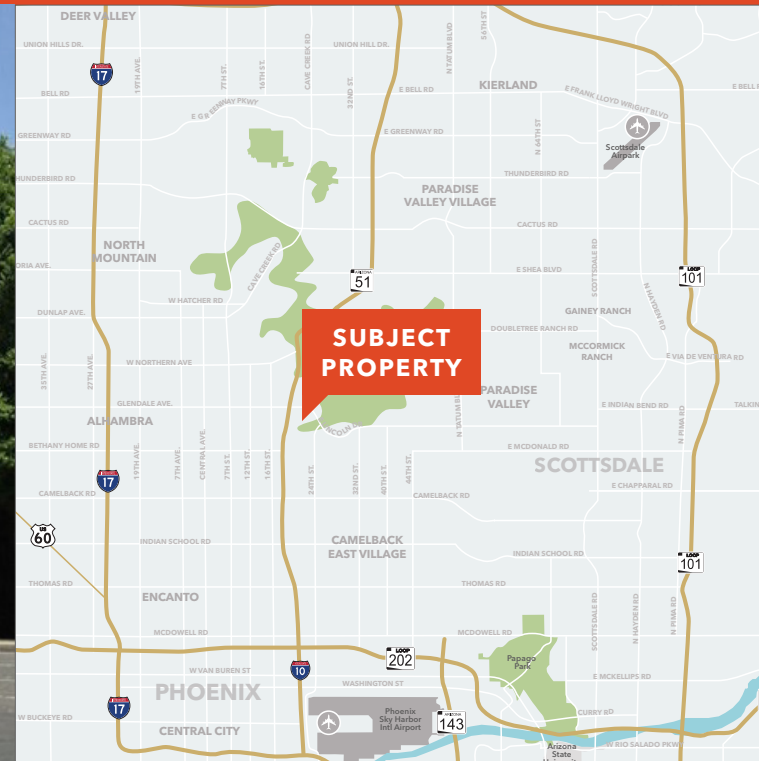




AVAILABLE

# 1819 Corporate Center

1819 E MORTEN AVENUE | PHOENIX, ARIZONA



**SCOTT ISACKSEN**  
602.513.5143  
scott.isacksen@kidder.com

**CHRIS JANTZ**  
602.513.5153  
chris.jantz@kidder.com

**Kidder  
Mathews**

This information supplied herein is from sources we deem reliable. It is provided without any representation, warranty, or guarantee, expressed or implied as to its accuracy. Prospective Buyer or Tenant should conduct an independent investigation and verification of all matters deemed to be material, including, but not limited to, statements of income and expenses. Consult your attorney, accountant, or other professional advisor.

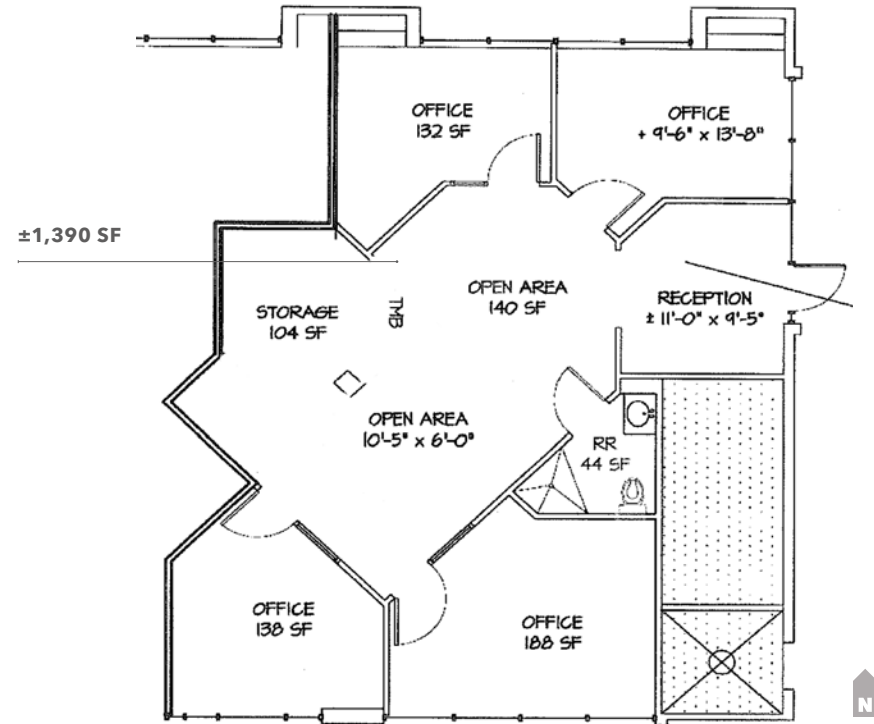
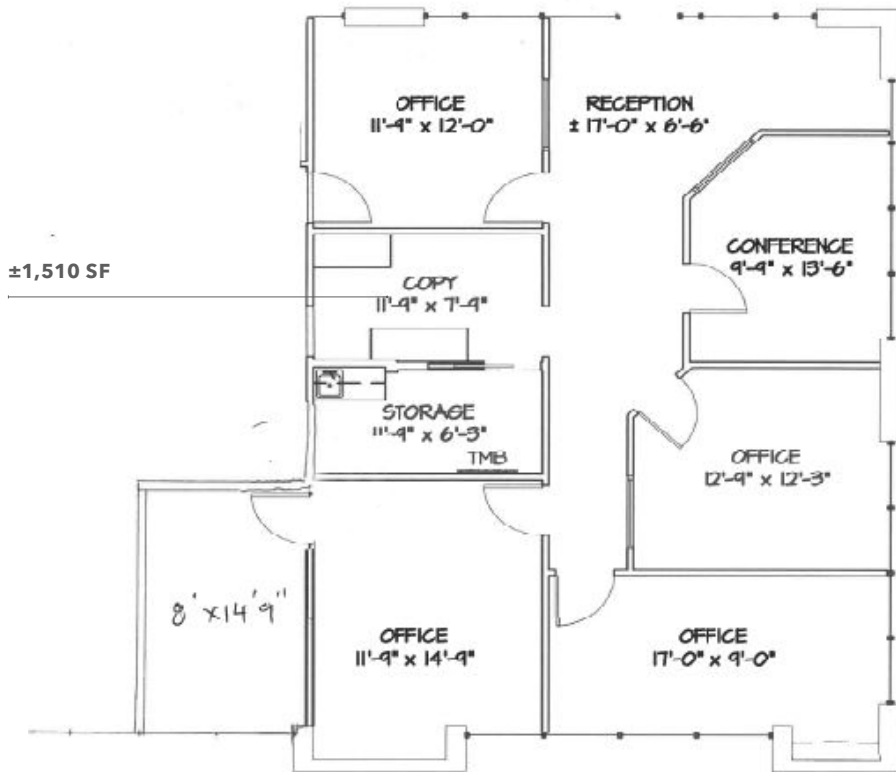
**KIDDER.COM**

AVAILABLE

# 1819 Corporate Center

1819 E MORTEN AVE | PHOENIX, AZ

## Suites 120 & 170



KIDDER.COM

This information supplied herein is from sources we deem reliable. It is provided without any representation, warranty, or guarantee, expressed or implied as to its accuracy. Prospective Buyer or Tenant should conduct an independent investigation and verification of all matters deemed to be material, including, but not limited to, statements of income and expenses. Consult your attorney, accountant, or other professional advisor.

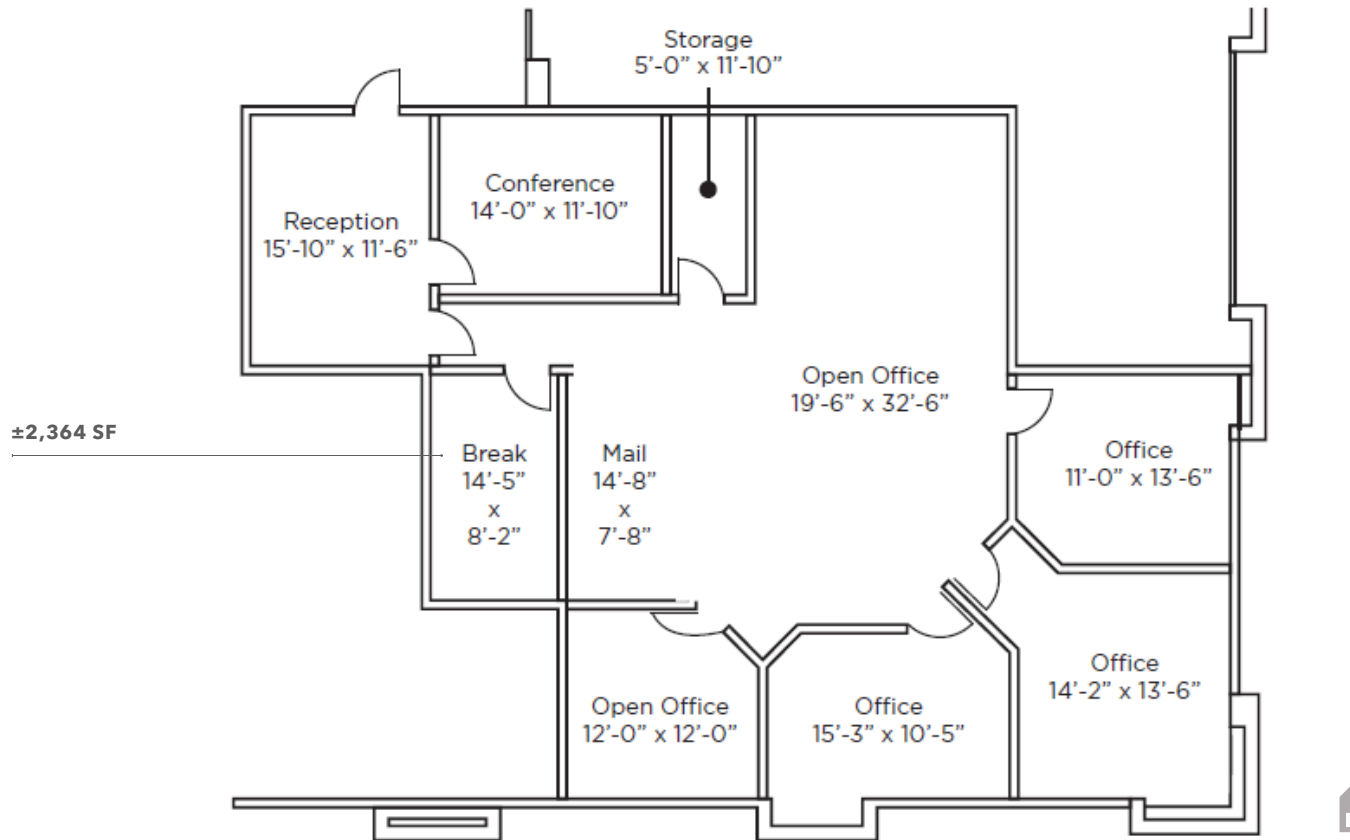
**km** Kidder Mathews

**AVAILABLE**

# 1819 Corporate Center

1819 E MORTEN AVE | PHOENIX, AZ

## Suite 240



**LESS** than a mile access to SR-51

**ADJACENT** to Hilton Pointe Resort & Aunt Chilada's

**EASY** access to Piestewa Peak

**WELL** maintained & manicured landscaping

**BUILDING** courtyard features seating area with fountain

**ON-SITE** ownership

**EXTERIOR** recently re-painted

**NEW** tenant entry signage package

### PROPERTY FEATURES

|                   |                                       |
|-------------------|---------------------------------------|
| Size              | ±31,051 SF                            |
| Asking Lease Rate | \$20.00/SF Modified Gross             |
| Covered Parking   | 4/1,000 SF \$35 for covered, reserved |
| Expenses          | 1985                                  |
| Zoning            | C-O, City of Phoenix                  |

KIDDER.COM

This information supplied herein is from sources we deem reliable. It is provided without any representation, warranty, or guarantee, expressed or implied as to its accuracy. Prospective Buyer or Tenant should conduct an independent investigation and verification of all matters deemed to be material, including, but not limited to, statements of income and expenses. Consult your attorney, accountant, or other professional advisor.

**km** Kidder Mathews



AVAILABLE

# 1819 Corporate Center

1819 E MORTEN AVE | PHOENIX, AZ



KIDDER.COM

This information supplied herein is from sources we deem reliable. It is provided without any representation, warranty, or guarantee, expressed or implied as to its accuracy. Prospective Buyer or Tenant should conduct an independent investigation and verification of all matters deemed to be material, including, but not limited to, statements of income and expenses. Consult your attorney, accountant, or other professional advisor.

**km** Kidder Mathews