

**±629 - 7,024 SF  
OFFICE SPACE**

**Inland Atrium**  
3200 Inland Empire Blvd.,  
Ontario, CA 91764

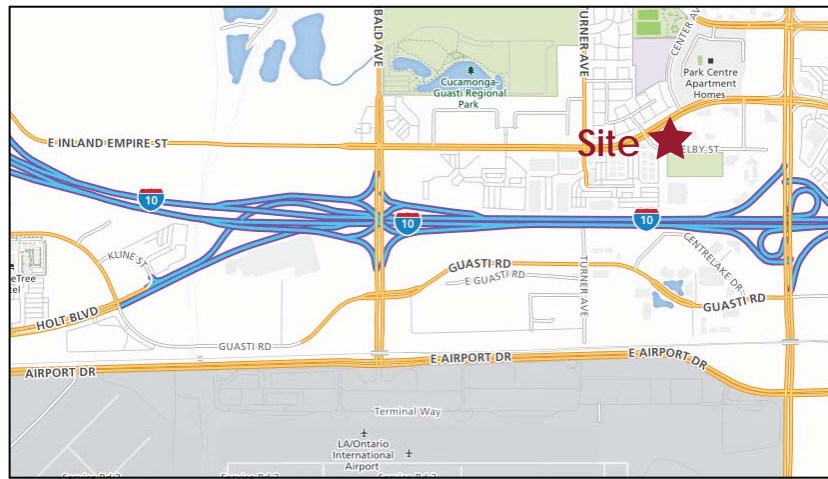
**FOR LEASE**

**Motivated Landlord**



## **BUILDING FEATURES:**

- Great Ontario location close to airport and freeway
- Immediate occupancy
- ±629 - 7,024 SF
- Recently Upgraded Common Areas
- Common area conference room
- Elevator served
- Flexible suite sizes
- Easy access to 10 Fwy



**LEE & ASSOCIATES®**  
COMMERCIAL REAL ESTATE SERVICES

**Jeff Bischofberger**  
License ID# 01512151  
(909)373-2708  
jbischof@lee-assoc.com

**Greg Martin**  
License ID# 01001749  
(909) 373-2904  
gmartin@lee-assoc.com

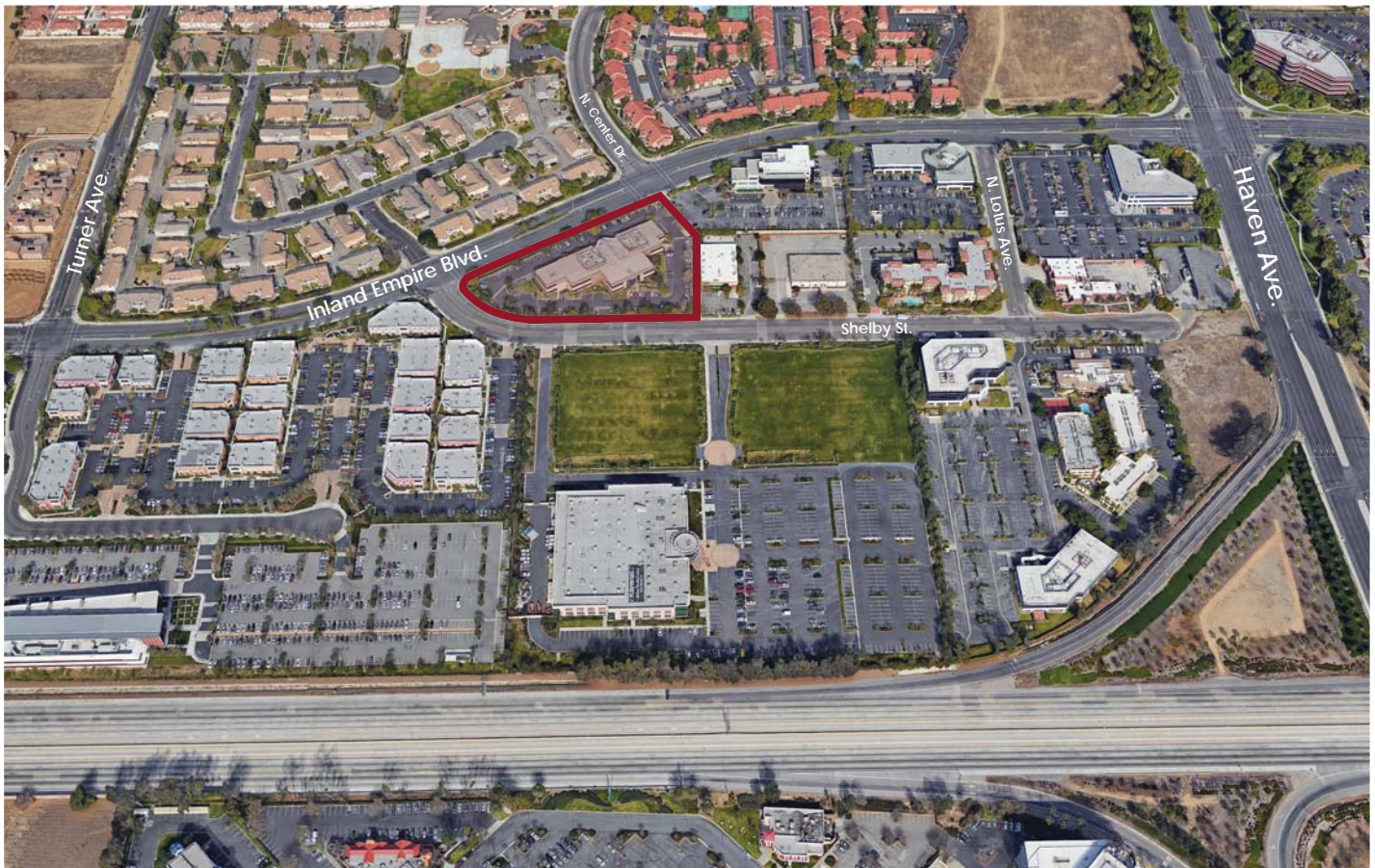
±629 - 7,024 SF  
OFFICE SPACE

**Inland Atrium**  
3200 Inland Empire Blvd.,  
Ontario, CA 91764

FOR LEASE

### AVAILABILITY

| Suite           | Size      | Description  |
|-----------------|-----------|--|
| 160/170         | ±3,112 SF | 7 private offices, storage, break-room & conference room                         |
| 180/190         | ±3,912 SF | Reception, 4 private offices   |
| 160/170/180/190 | ±7,024 SF | Reception, 11 private offices, storage, open areas, break-room & conference room |
| 200             | ±2,355 SF | Reception, 3 private offices and open area                                       |
| 217             | ±850 SF   | Open space   |
| 220             | ±3,158    | Reception, open space & private offices (available 1/1/18)                       |
| 235             | ±1,492 SF | Reception, 2 private offices & a break-room                                      |
| 245             | ±629 SF   | Open space   |
| 235/245         | ±2,121    | Reception, open space, 2 private offices & a break-room                          |



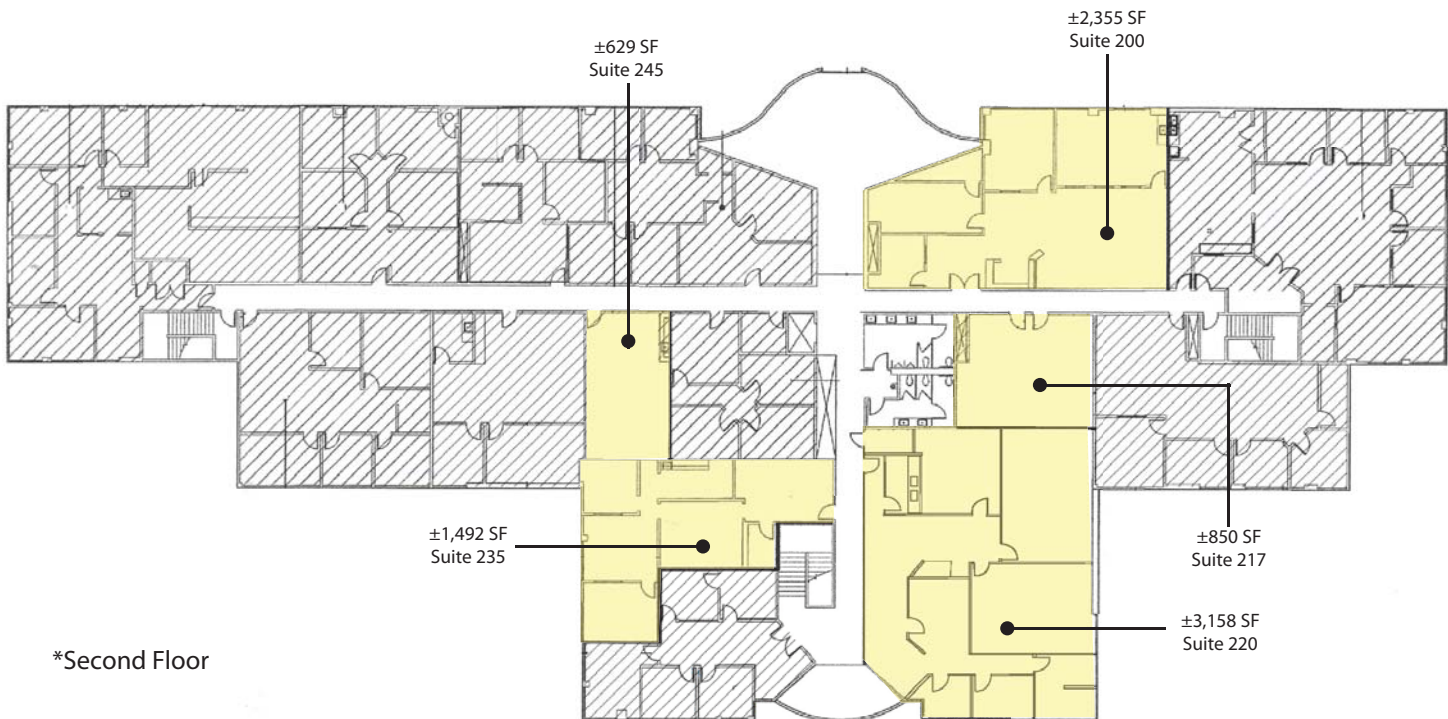
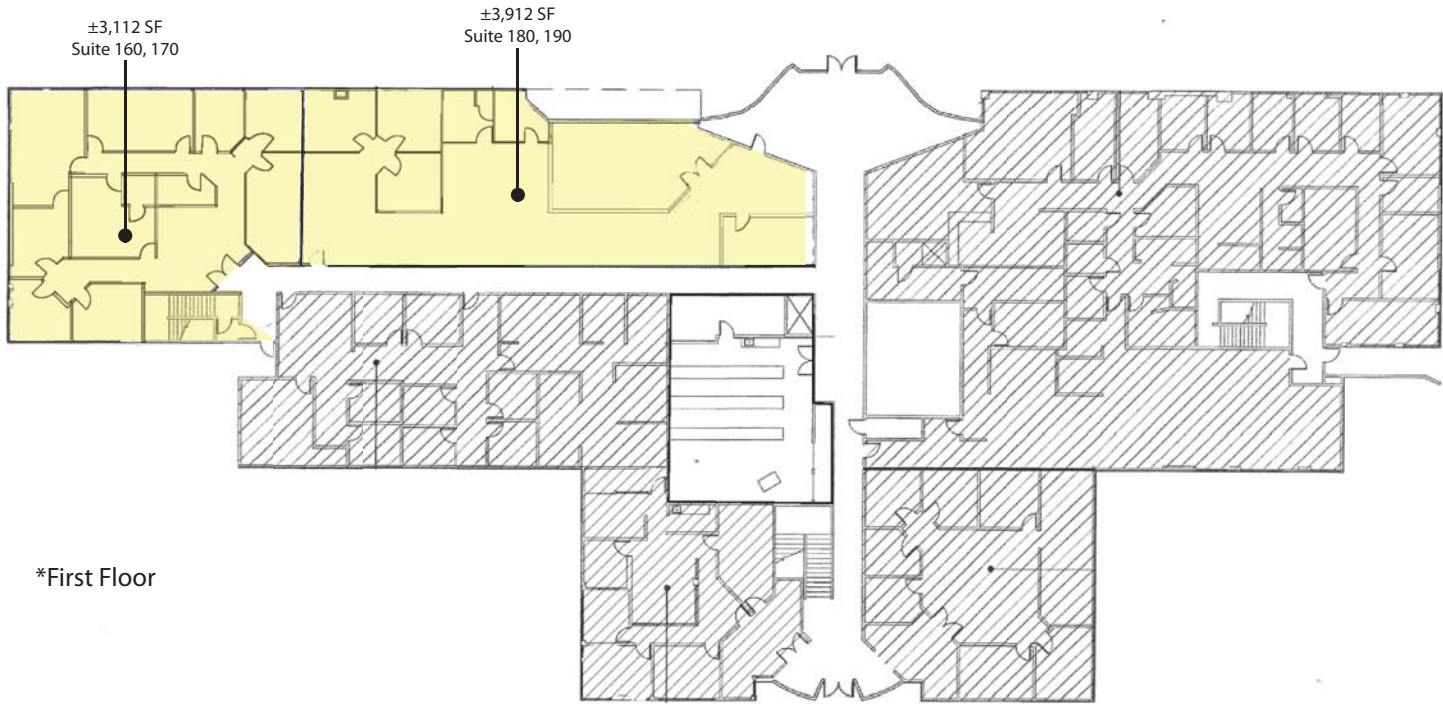
**Jeff Bischofberger**  
License ID# 01512151  
(909)373-2708  
jbischof@lee-assoc.com

**Greg Martin**  
License ID# 01001749  
(909) 373-2904  
gmartin@lee-assoc.com

# ±629 - 7,024 SF OFFICE SPACE

**Inland Atrium**  
3200 Inland Empire Blvd.,  
Ontario, CA 91764

FOR LEASE



**Jeff Bischofberger**  
License ID# 01512151  
(909)373-2708  
jbischof@lee-assoc.com

**Greg Martin**  
License ID# 01001749  
(909) 373-2904  
gmartin@lee-assoc.com