

# PROFESSIONAL OFFICE SUITE FOR LEASE

## Westview Plaza I • St. Lucie West

### FRONTAGE ON I-95



1850 SW Fountainview Blvd • Port St. Lucie • FL 34986

### PROPERTY HIGHLIGHTS

- Premier Class “A” Office Building
- Prime Location in the Master-Planned Community of St. Lucie West
- Fiber Equipped Smart Building
- Distinctive building with visibility from I-95
- Immediate Access • Located adjacent to the Exit Ramp at St. Lucie West Blvd.
- Building security system with 24/7 key card access
- **LAST SUITE AVAILABLE!**
- ±4,939 sf professional office suite on the 2nd floor immediately off of the elevator
- Move-in ready condition
- Lease Rate: \$17.50 PSF NNN



Thomas R. Gibson, Broker  
561.776.9300  
trg@assetspecialists.com



**ASSET**  
SPECIALISTS, INC.

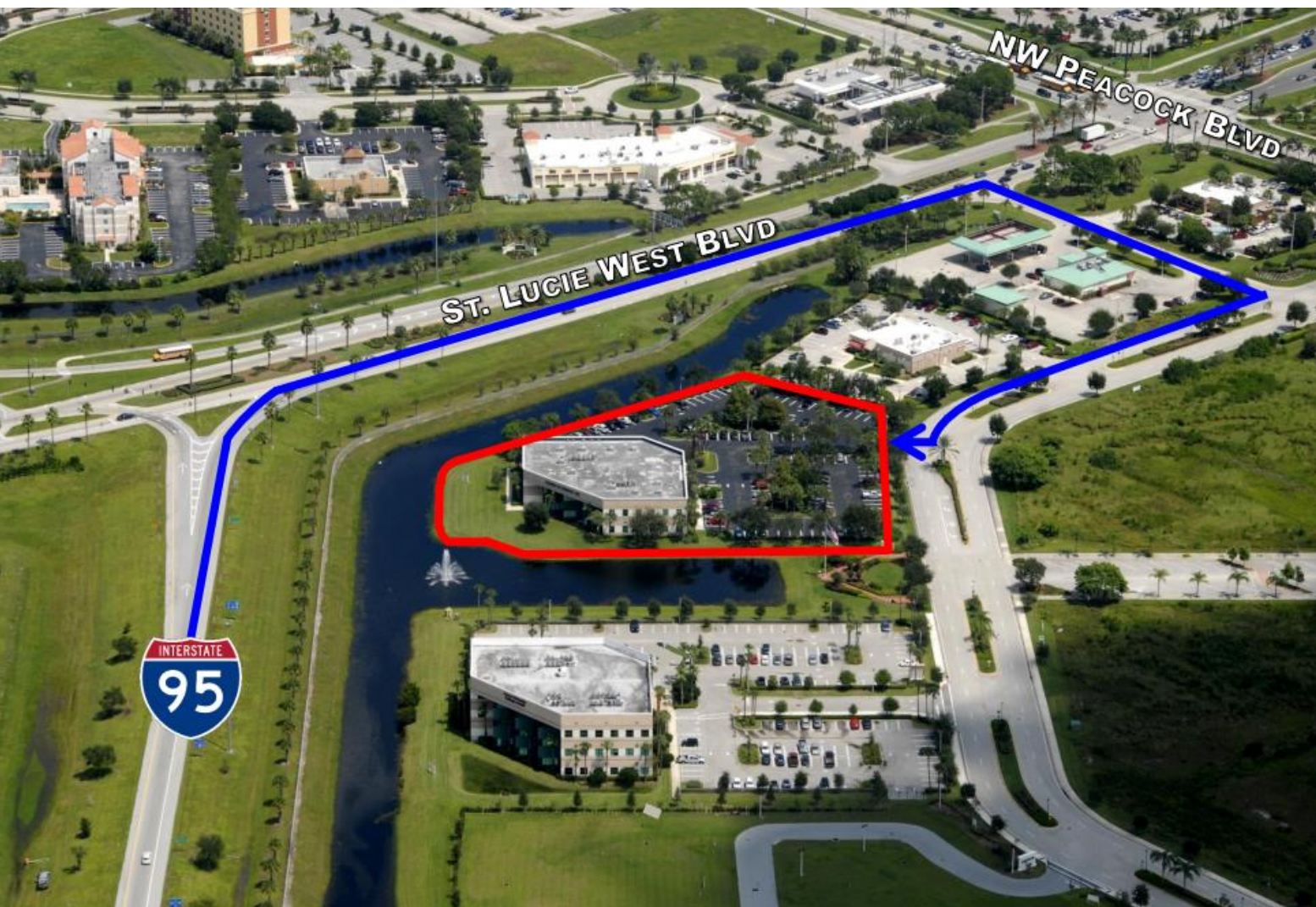
Asset Specialists, Inc.  
3710 Buckeye Street • Suite 100  
Palm Beach Gardens, FL 33410





# LOCATION ACCESS MAP

**Excellent Commuter Location • Immediate Access to I-95**



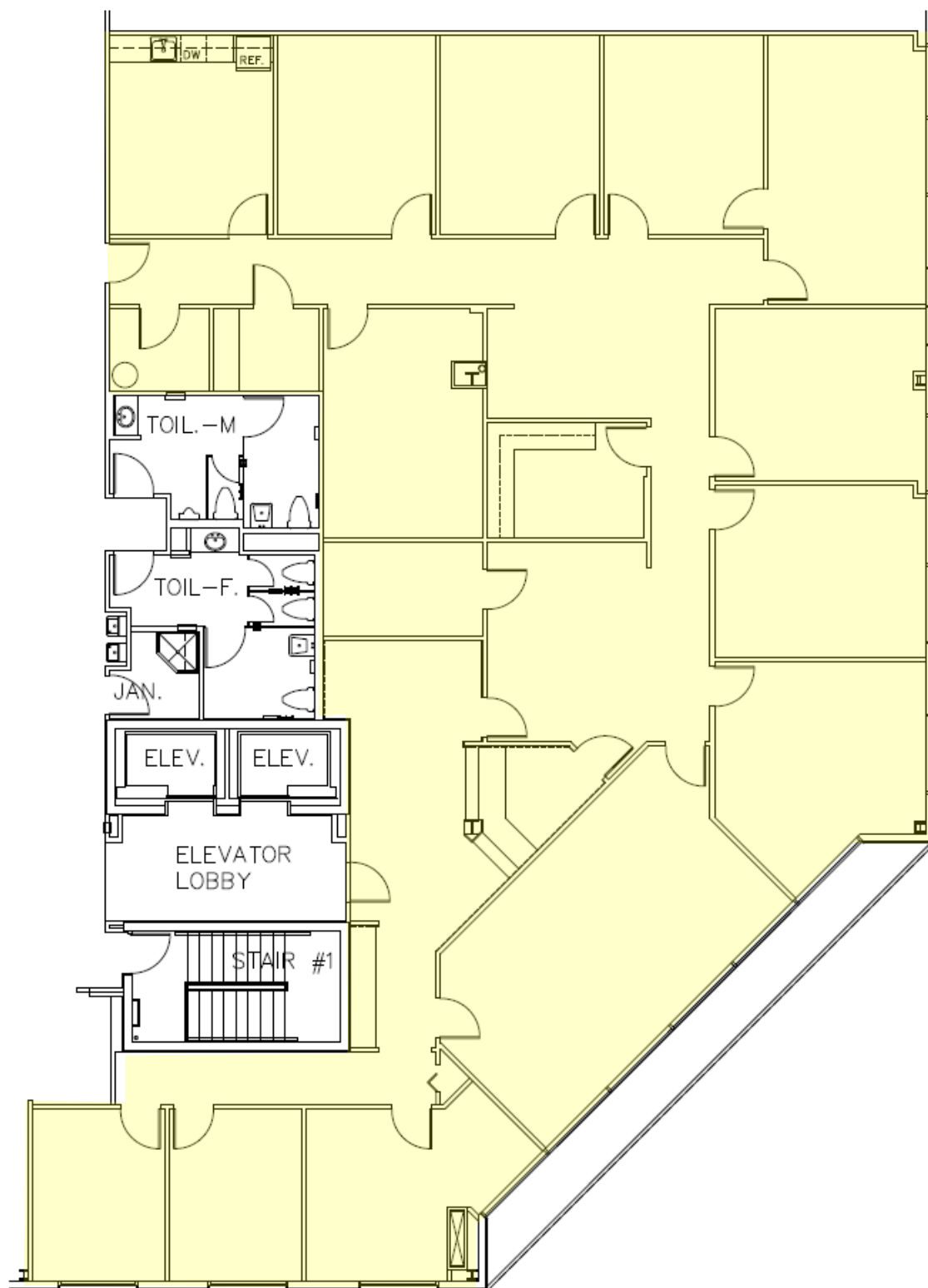
Destinations	Distance (Miles)	Travel Time
Interstate 95	0.2	1 min
Florida's Turnpike	4.6	10 mins
Downtown Stuart	16.2	20 mins
Vero Beach	25.8	35 mins
Palm Beach International Airport	55	50 mins

subject to errors, omissions, prior sale or lease, change in price and withdrawal



# FLOOR PLAN

Suite 202 • ±4,939 Square Feet



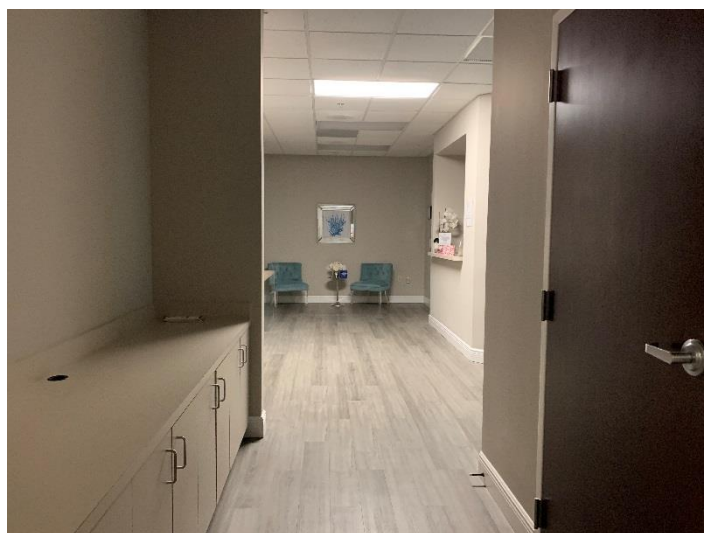
subject to errors, omissions, prior sale or lease, change in price and withdrawal





# INTERIOR PHOTOS

Suite 202 • ±4,939 Square Feet



subject to errors, omissions, prior sale or lease, change in price and withdrawal



# COMMERCIAL REAL ESTATE SERVICES



BRINGING THE  
**RIGHT PEOPLE TOGETHER**  
AT THE **RIGHT TIME.**

EXCEPTIONALLY  
**NETWORKED.**  
A **UNIQUE ADVANTAGE.**



**A S S E T**  
**SPECIALISTS, INC.**  
Commercial Real Estate Services

Asset Specialists, Inc.  
3710 Buckeye Street • Suite 100  
Palm Beach Gardens • FL • 33410

Thomas R. Gibson, Broker  
561.776.9300  
[www.AssetSpecialists.com](http://www.AssetSpecialists.com)

Darryn Dunn, Sen. Director  
561.776.9300  
[dwd@assetspecialists.com](mailto:dwd@assetspecialists.com)