

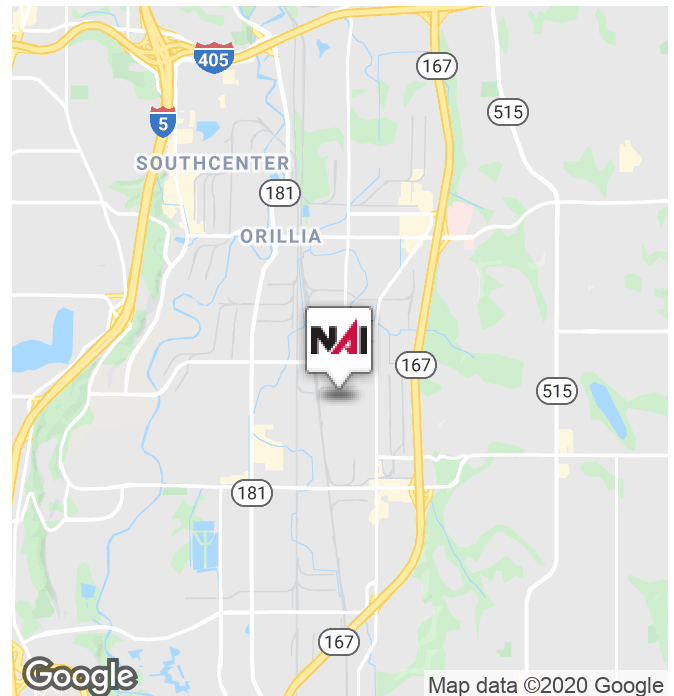


## Kvichak Manufacturing Building

7848 S 202nd Street, Building 2  
Kent, WA 98032

### Property Highlights

- Approx 10,000 SF (850 SF Office)
- Approx 3,217 SF Heavy Load Mezzanine
- (Space Really 13,000 SF Usable)
- 24-26' Clear Height
- 3 Oversized GL Doors, 1 Standard GL Door
- 3-Phase Heavy Power
- Crane in Space
- Fully Fenced and Secured Site
- Potential for Outside Storage
- \$0.88 PSF Blended, NNN
- Available November 1, 2020



**Jeff Forsberg, CCIM**

Principal | 425.586.5610

[jforsberg@nai-psp.com](mailto:jforsberg@nai-psp.com)

**Connor Powell**

Associate Vice President | 425.586.5642

[cpowell@nai-psp.com](mailto:cpowell@nai-psp.com)

**Bret Matysik**

Associate | 425.586.5617

[bmatysik@nai-psp.com](mailto:bmatysik@nai-psp.com)





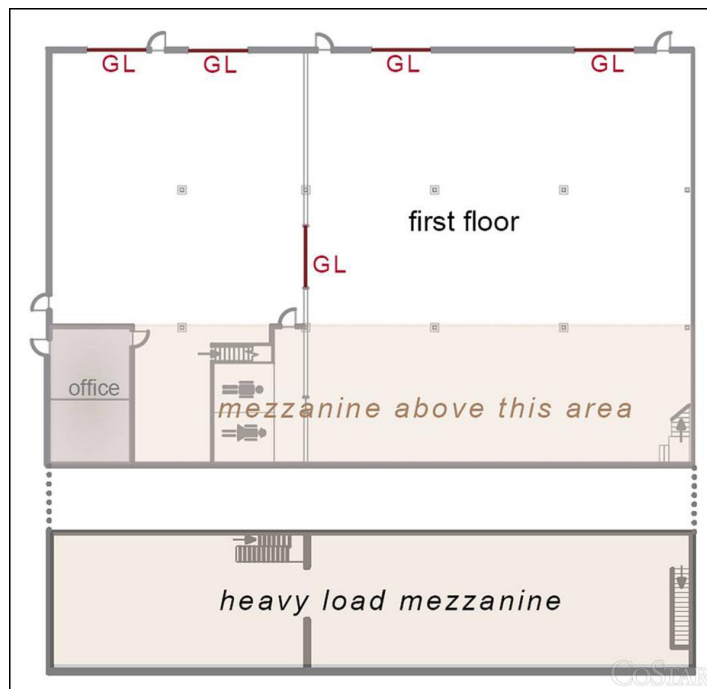
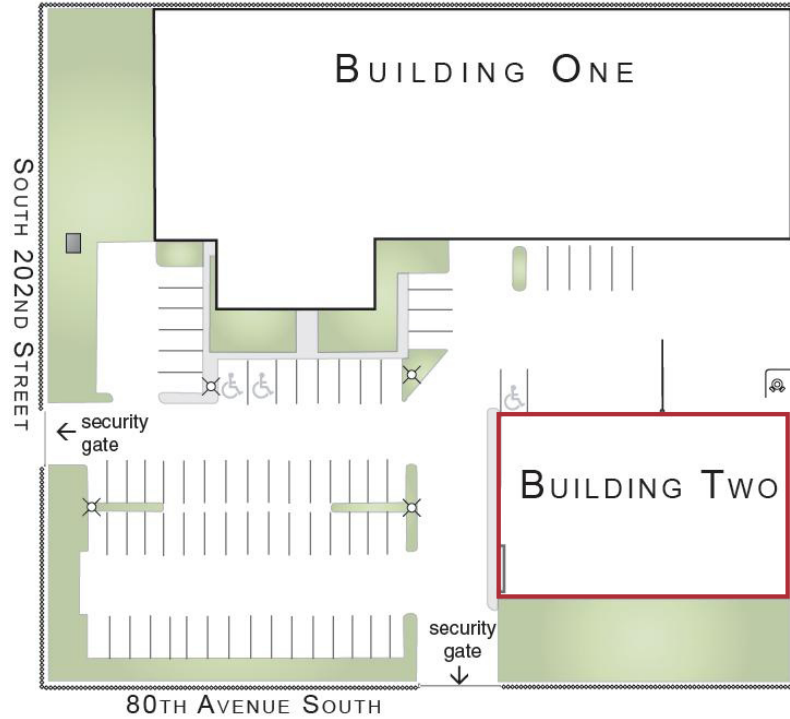
**FOR LEASE**



**MANUFACTURING WAREHOUSE**



**CRANE & HEAVY POWER**



**Jeff Forsberg, CCIM**  
Principal | 425.586.5610  
jforsberg@nai-pp.com

**Connor Powell**  
Associate Vice President | 425.586.5642  
cpowell@nai-pp.com

**Bret Matysik**  
Associate | 425.586.5617  
bmatysik@nai-pp.com

