

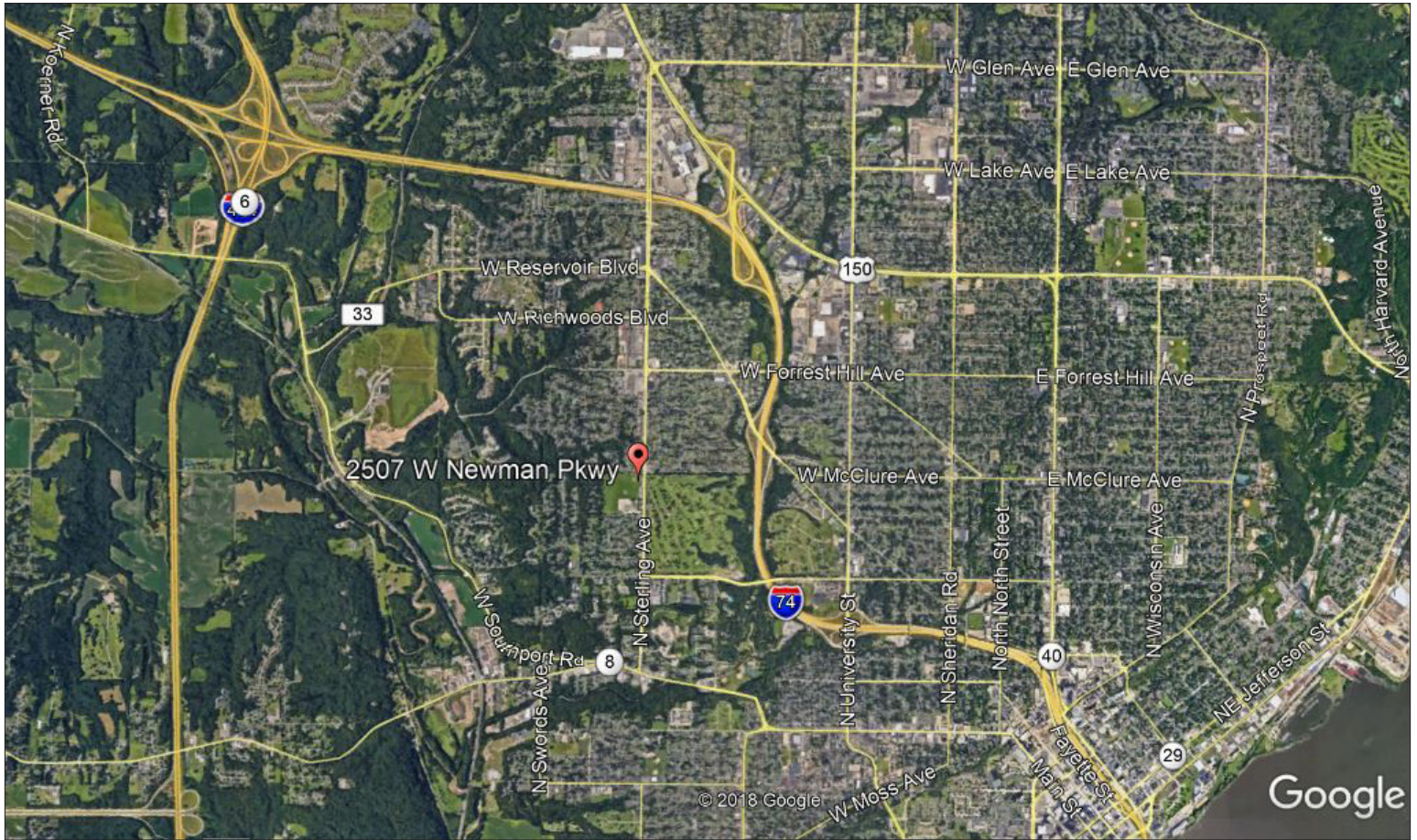


- Approximately 9,000 sq ft Church building located in central Peoria.
- Sanctuary seats approximately 80 people.
- Includes a wood burning fireplace and a large open meeting room.
- Several separate rooms that can be used for class rooms or offices.
- Large kitchen with a refrigerator, stove and plenty of cabinet space.
- Parking lot with abundant parking and a shed included.
- Located on the corner of Sterling Avenue and Newman Parkway with traffic counts of 16,400 cars per day.



TOM CAMPER

E-MAIL: tomcamper@josephcamper.com | CELL: 309-256-1020



PROPERTY DETAILS

PROPERTY TYPE	CHURCH
BUILDING SIZE	APPROX 9,000 SF
LOT SIZE	3.13 ACRES
ZONING	R-3
PARKING	ON-SITE LOT
REAL ESTATE TAXES (2017)	EXEMPT
SALE PRICE	\$360,000



TOM CAMPER

E-MAIL: tomcamper@josephcamper.com | CELL: 309-256-1020