



**INDUSTRIAL
SPACE
FOR LEASE**

PARKVIEW EAST

17640 NE 65TH ST. REDMOND, WA 98052

ROBERT MESSMER, CCIM
425.458.3902 | 206.948.1577 (c)
rmessmer@rgmcommercial.com

JENNIFER HEYL
425.458.3908
jennifer@rgmcommercial.com

10423 Main Street #5, Bellevue, WA 98004
425.452.3052 | rgmcommercial.com



Great Industrial Warehouse lease opportunity in SE Redmond off of NE 65th Street near Marymoor Park

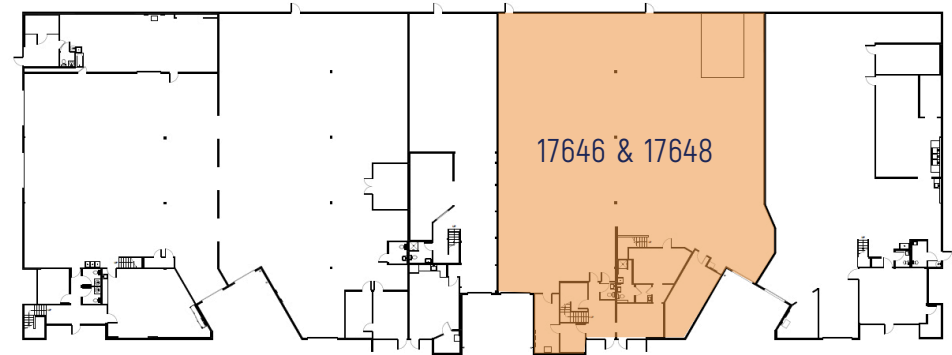
Rental Rate	\$1.50/SF/Mo + NNN
Square Footage	11,643 SF 2,645 SF Office (1st Fl 992 SF/2nd Fl 1,653 SF) 8,998 SF Warehouse
Parking	Approximately 1 parking stall per 1,000 SF
Electric Service	Heavy Power to Building 277/480 volt, 3 phase
Grade Level Door	1- 10' x 12'
Dock High Door	1- 8' x 10'
Clear Height	Approximately 22 Feet
Fire Sprinkler System	Heat activated wet system
Roof	Roof installed in 2008
Communication/Fiber	Frontier FIOS & Comcast Business
Zoning	MDD4 (Manufacturing & Industrial)
Year Built	1982



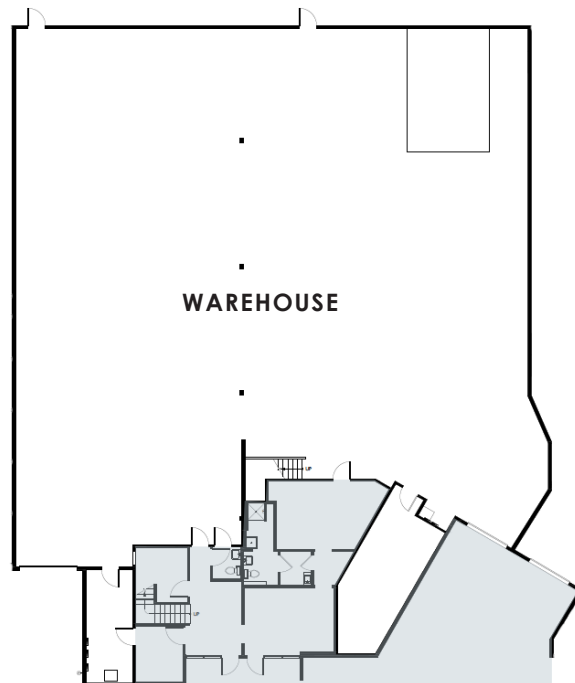
11,643 SF

2,645 SF OFFICE (1st Fl 992 SF | 2nd Fl 1,653 SF)

8,998 SF WAREHOUSE



First Floor



Second Floor

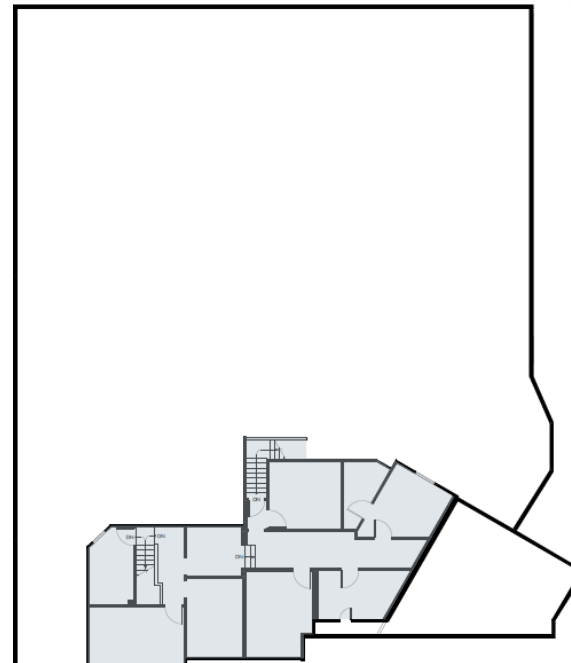


PHOTO GALLERY



ROBERT MESSMER, CCIM
425.458.3902 | 206.948.1577 (c)
rmessmer@rgmcommercial.com

JENNIFER HEYL
425.458.3908
jennifer@rgmcommercial.com

425.452.3052 | rgmcommercial.com

The information contained herein has been received from sources we deem reliable. While we have no reason to doubt its accuracy, we do not guarantee it. You are advised to independently verify all information.



Redmond is the seventh most populous city in King County and the 15th most populous city in the State of Washington. Located 11 miles NE of downtown Seattle, the city offers 20+ local and regional King Country Metro bus routes and will be home to Sound Transit light rail service in 2023. The city's two urban centers, Downtown and Overlake, are flourishing with residential and commercial development, with SE Redmond boasting opportunities for manufacturing and high technology sector businesses. World-changing high-tech, gaming, aerospace, and biomedical companies such as Microsoft, Genie Industries, SpaceX, Pacific Bioscience Laboratories, Inc., and Nintendo of America call Redmond home.



ROBERT MESSMER, CCIM
425.458.3902 | 206.948.1577 (c)
rmessmer@rgmcommercial.com

JENNIFER HEYL
425.458.3908
jennifer@rgmcommercial.com

425.452.3052 | rgmcommercial.com

The information contained herein has been received from sources we deem reliable. While we have no reason to doubt its accuracy, we do not guarantee it. You are advised to independently verify all information.

