



Property Highlights

- Adjacent to Florida Atlantic University and the Boca Raton Executive Airport
- Access to Tri-Rail by Palm Tram or El Rio walking/bike trail
- University collaboration among park tenants
- On-site management

Availability

- Suite 308: 3,664 sf
- Suite 310: 4,189 sf

Rental Rate

- \$18.50 NNN

Operating Expenses

- \$8.36
Net of suite electric & janitorial

Benefits for Research Park Companies

[CLICK TO VIEW](#)

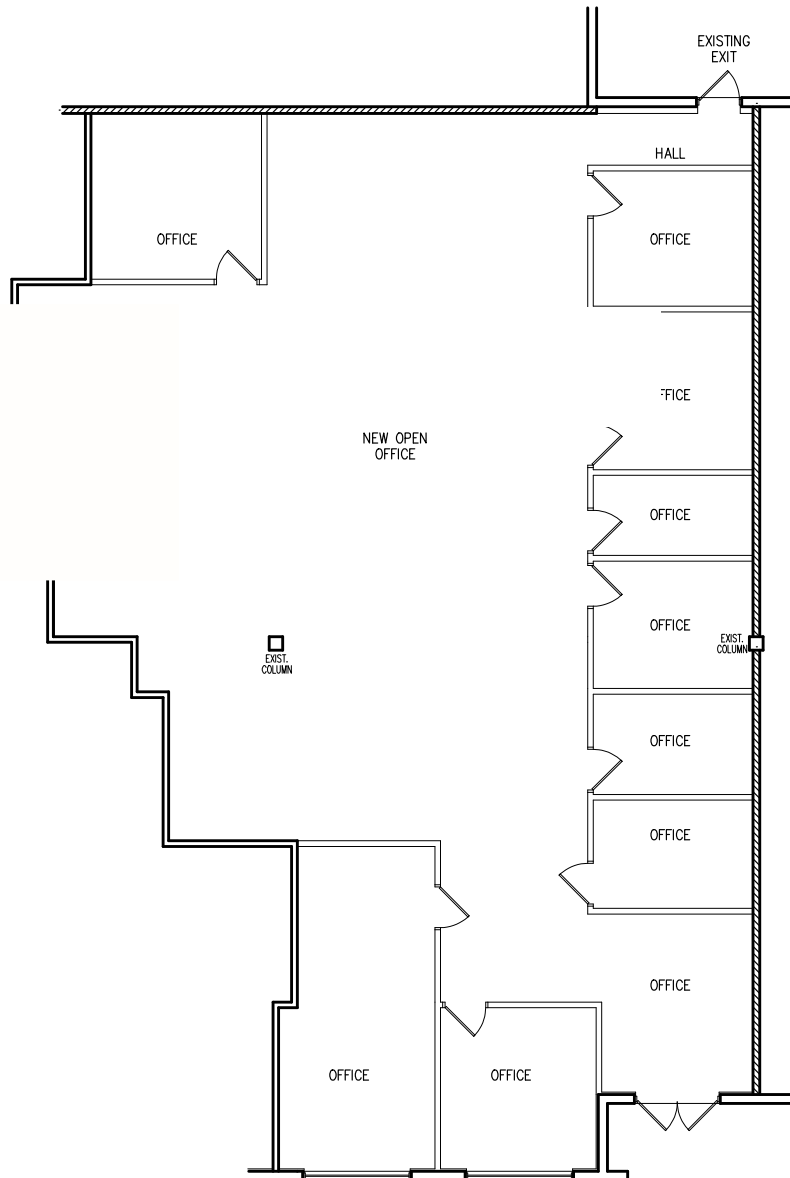
Greg Martin, Principal
D 954 903 3900
greg.martin@avisonyoung.com

Justin Cope, Principal
D 954 903 3701
justin.cope@avisonyoung.com

Lisa Blumer, Senior Associate
D 954 903 3703
lisa.blumer@avisonyoung.com

500 W Cypress Creek Road
Suite 550
Fort Lauderdale, FL 33309

Suite 308 - 3,664 sf



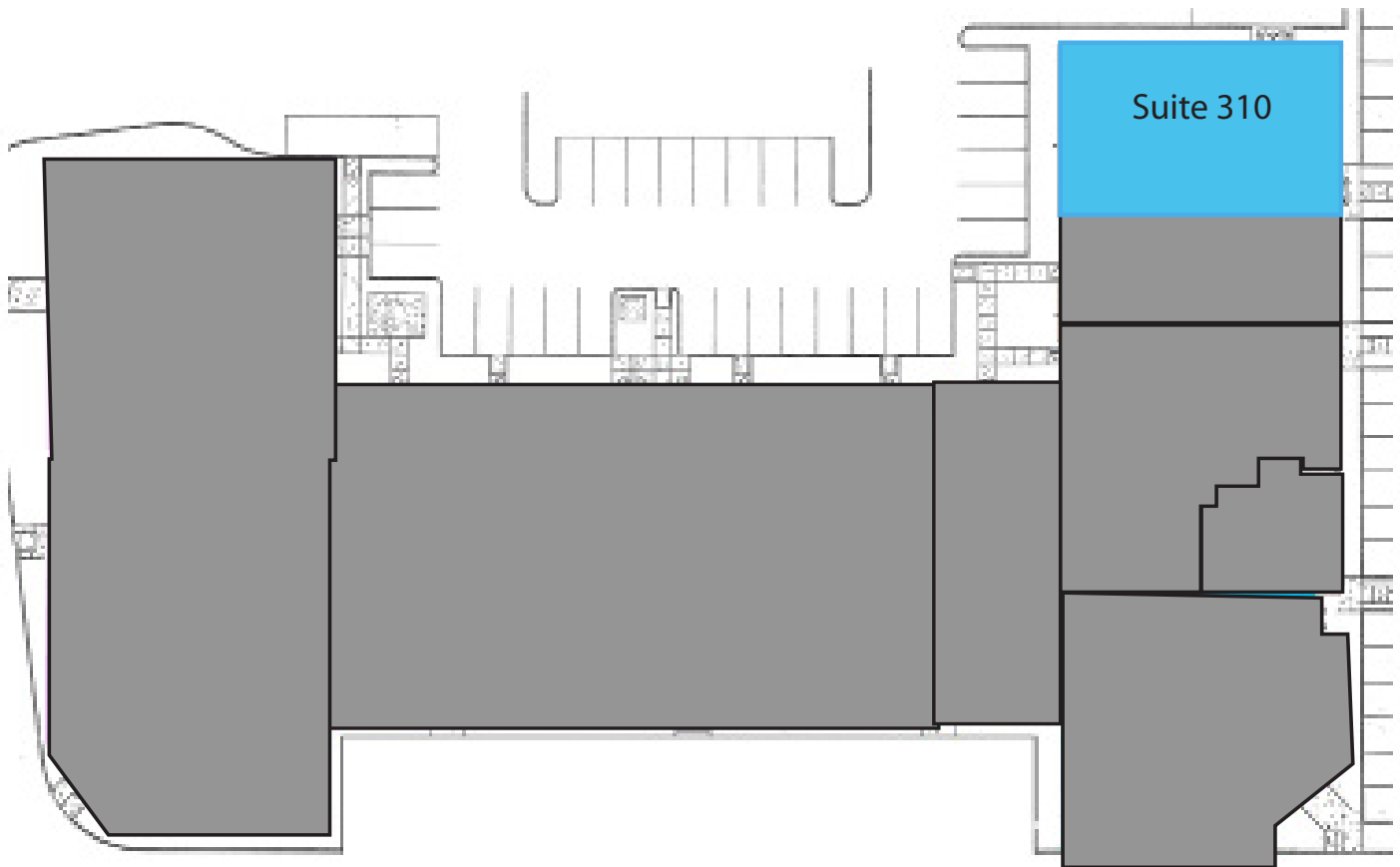
Greg Martin, Principal
D 954 903 3900
greg.martin@avisonyoung.com

Justin Cope, Principal
D 954 903 3701
justin.cope@avisonyoung.com

Lisa Blumer, Senior Associate
D 954 903 3703
lisa.blumer@avisonyoung.com

500 W Cypress Creek Road
Suite 550
Fort Lauderdale, FL 33309

Suite 310 - 4,189 sf



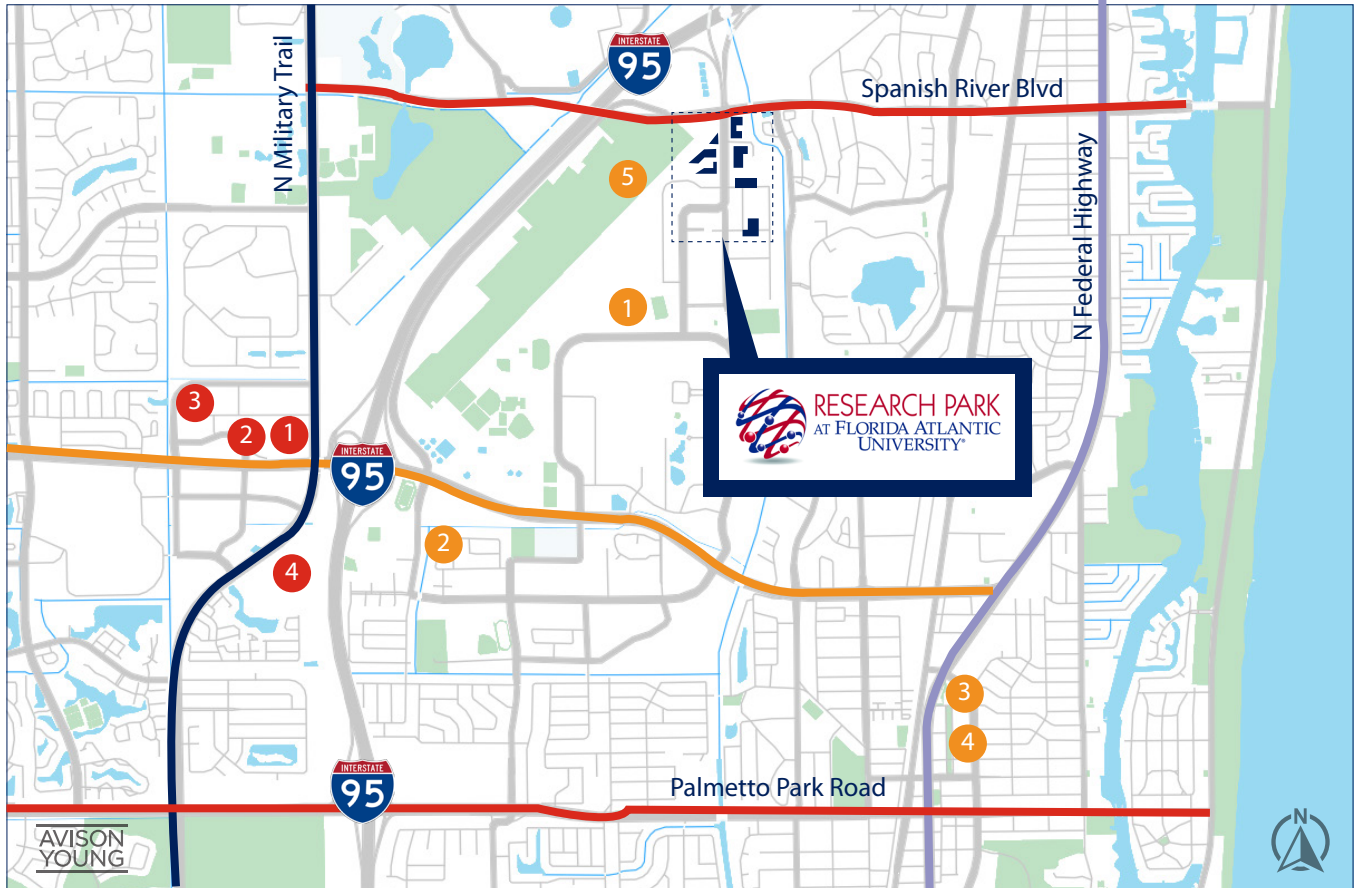
Greg Martin, Principal
D 954 903 3900
greg.martin@avisonyoung.com

Justin Cope, Principal
D 954 903 3701
justin.cope@avisonyoung.com

Lisa Blumer, Senior Associate
D 954 903 3703
lisa.blumer@avisonyoung.com

500 W Cypress Creek Road
Suite 550
Fort Lauderdale, FL 33309

Property Location



RESTAURANTS

- 1 Houston's
- 2 Seasons 52
- 3 New York Prime
- 4 Morton's Steakhouse

MISCELLANEOUS

- 1 Florida Atlantic University
- 2 Whole Foods
- 3 Boca Raton Museum of Art
- 4 Mizner Park
- 5 Boca Raton Airport Authority

Greg Martin, Principal
 D 954 903 3900
 greg.martin@avisonyoung.com

Justin Cope, Principal
 D 954 903 3701
 justin.cope@avisonyoung.com

Lisa Blumer, Senior Associate
 D 954 903 3703
 lisa.blumer@avisonyoung.com

500 W Cypress Creek Road
 Suite 550
 Fort Lauderdale, FL 33309