



Voit
REAL ESTATE SERVICES

6042-6048 COURT
CORNERSTONE
SAN DIEGO, CA

2,733-5,896 SF LAB/OFFICE SPACE AVAILABLE FOR LEASE AT FOUNTAIN PLAZA

WESTON YAHN
858.458.3321 | wyaahn@voitco.com | Lic. #01975469

GARRETT FENA
858.458.3318 | gfena@voitco.com | Lic. #01909122

TODD HOLLEY, SIOR
858.458.3349 | tholley@voitco.com | Lic. #01046508

FOUNTAIN PLAZA | SORRENTO VALLEY

Voit Real Estate Services is pleased to present office / lab space for lease located in **FOUNTAIN PLAZA** at 6044-6048 Cornerstone Court West, San Diego, CA 92121. Available for lease in Sorrento Mesa located along the south side of Mira Mesa Boulevard in the heart of San Diego's prestigious research and high-tech and Lab submarket. Locate your business in the heart of Technology Central.

TENANT IMPROVEMENTS \$\$
AVAILABLE



FOR LEASE AT FOUNTAIN PLAZA

6042-6048 COURT CORNERSTONE

SAN DIEGO, CA

PROJECT SUMMARY

AVAILABILITY

Office / Lab Space: ±2,733 to ±5,896 SF

LEASE RATE

\$1.25 - \$1.45 NNN

LOCATION

Fountain Plaza is located in the heart of Sorrento Mesa, directly off Mira Mesa Boulevard and Pacific Heights Boulevard

FEATURES

- Nice brick exterior; Window-lined office / lab space
- Private offices and conference room
- Free parking / Building signage
- Located near UCSD, Torrey Pines & other amenities
- Contact broker to view availability

WESTON YAHN

wyahn@voitco.com
Lic. #01975469
858.458.3321

GARRETT FENA

gfena@voitco.com
Lic. #01909122
858.458.3318

TODD HOLLEY, SIOR

tholley@voitco.com
Lic. #01046508
858.458.3349

Licensed as Real Estate Salespersons by the CA Bur of Real Estate. The information contained herein has been obtained from sources we deem reliable. While we have no reason to doubt its accuracy, we do not guarantee it. ©2018 Voit Real Estate Services, Inc. All Rights Reserved.



FLOOR PLAN

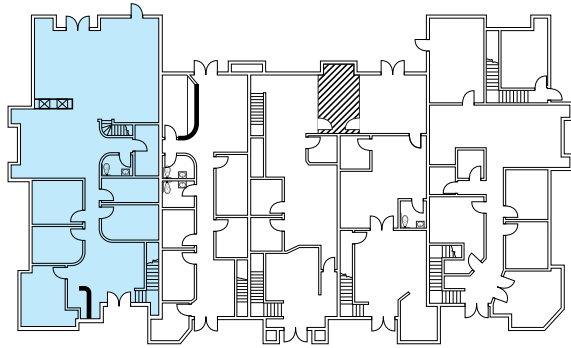
BUILDING 6048

Suite A1 & A2

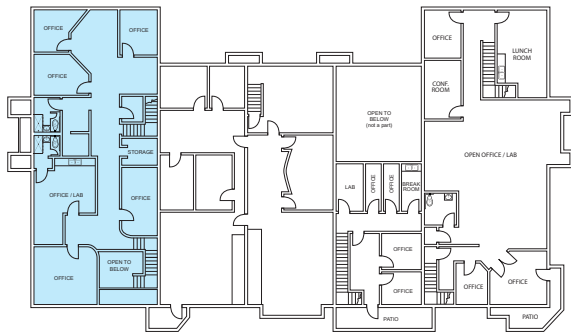
±5,896 SF

\$1.45 NNN

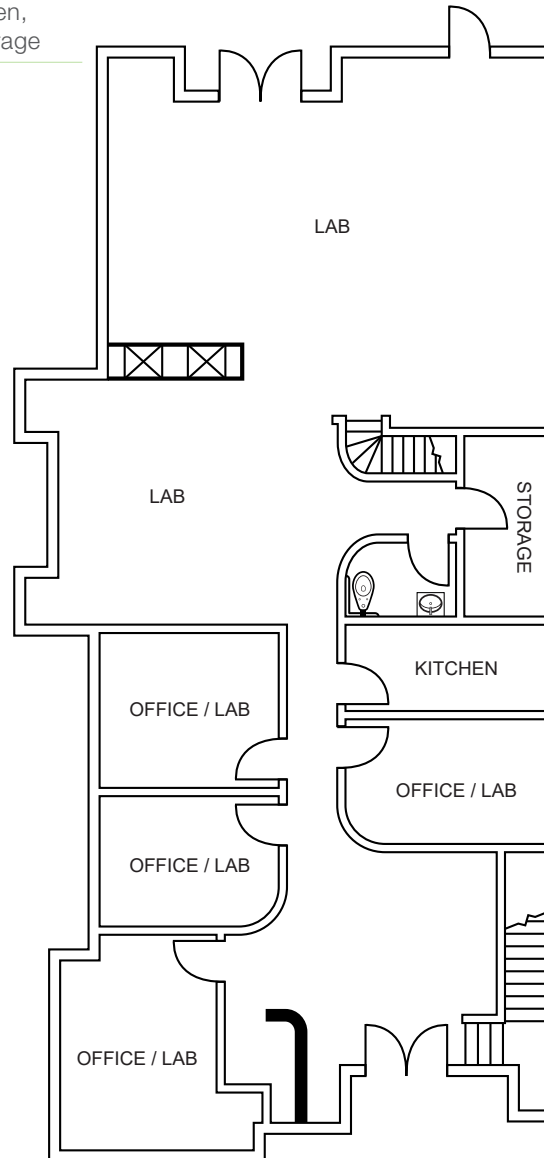
2 Stories, Offices, Labs, Kitchen,
Restrooms (3), Showers, & Storage



FIRST FLOOR

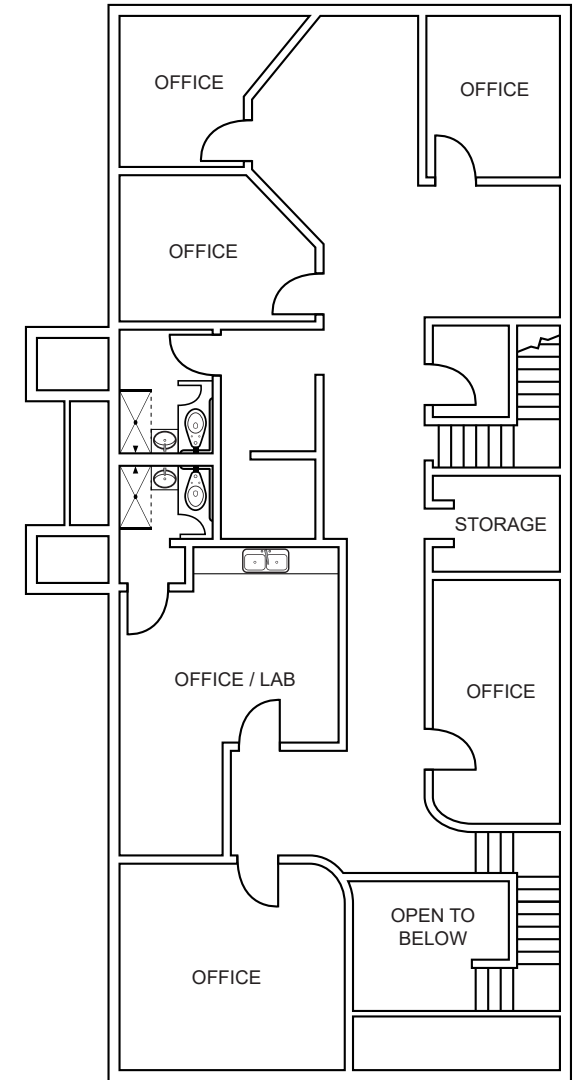


SECOND FLOOR



FIRST FLOOR

6048_#A1



SECOND FLOOR

6048_#A2

FLOOR PLAN

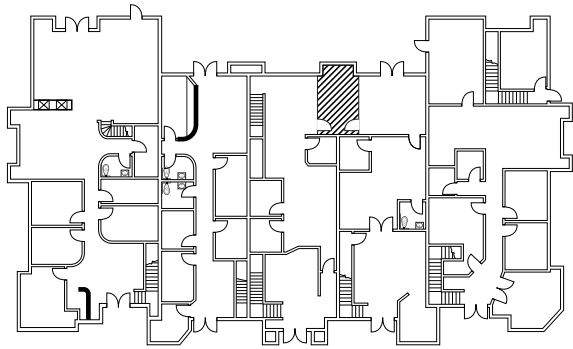
BUILDING 6048

Suite E2

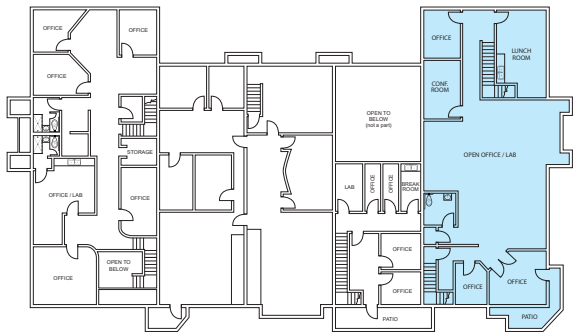
±2,733 SF

\$1.25 NNN

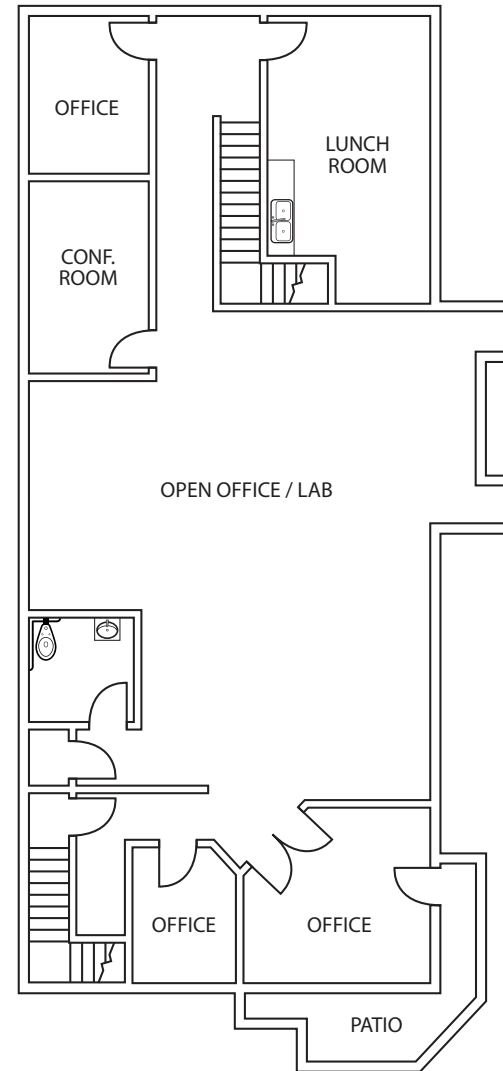
Open Area / Lab, Offices, Lunch Room,
Conference Room, & Patio



FIRST FLOOR



SECOND FLOOR



SECOND FLOOR

6048_#E2



WESTON YAHN
Senior Associate
Lic. #01975469
wyahn@voitco.com
[858.458.3321](tel:858.458.3321)

GARRETT FENA
Vice President
Lic. #01909122
gfena@voitco.com
[858.458.3318](tel:858.458.3318)

TODD HOLLEY, SIOR
Senior Vice President
Lic. #01046508
tholley@voitco.com
[858.458.3349](tel:858.458.3349)

Voit
REAL ESTATE SERVICES

4180 La Jolla Village Drive, Suite 100, La Jolla, CA 92037 • 858.453.0505 • 858.408.3976 Fax • Lic #01991785 • www.voitco.com

Licensed as a Real Estate Salespersons by the CA Bur of Real Estate. The information contained herein has been obtained from sources we deem reliable. While we have no reason to doubt its accuracy, we do not guarantee it. ©2018 Voit Real Estate Services, Inc. All Rights Reserved. Real People. Real Solutions.® is a registered trademark of Voit Real Estate Services.