

FOR LEASE



SHOREVIEW OFFICE PARK

1000 COUNTY ROAD E ● SHOREVIEW, MN 55126

- 1,357 SF - 2,198 SF AVAILABLE
- PERFECT FOR PROFESSIONAL OFFICE, MEDICAL OR SERVICE
- LOCATED JUST WEST OF LEXINGTON AVENUE & JUST SOUTH OF I-694
- SHARED CONFERENCE ROOM
- AMPLE ON-SITE PARKING
- MANY AREA AMENITIES INCLUDING: CARIBOU COFFEE, YMCA, TARGET, AND NUMEROUS OTHER RETAIL STORES & RESTAURANTS

CONTACT:

WWW.ESSENCEREALESTATE.COM

JEFF NORDNESS
jeff@essencerealestate.com
651-341-5044

SHOREVIEW OFFICE PARK

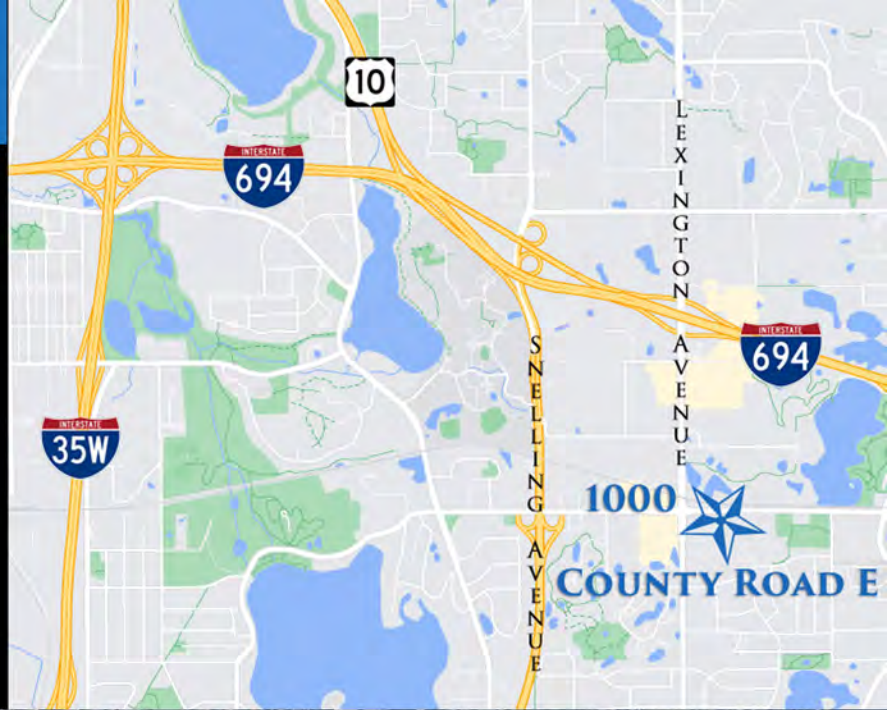
1000 COUNTY ROAD E ● SHOREVIEW, MN 55126

BUILDING DETAILS:

OFFICE NET RENT: \$13.00 SF
2023 EST. OP. EXP. \$9.55 SF

SPACE AVAILABLE:
SUITE 230 2,198 SF
SUITE 290 1,357 SF

**APPROX. \$2,550 - \$4,130
A MONTH**



EXCELLENT SPACES IN THIS BUSY
SHOREVIEW COMMUNITY

ERSI

ESSENCE
REAL ESTATE
SERVICES INC.

JEFF NORDNESS

651-341-5044

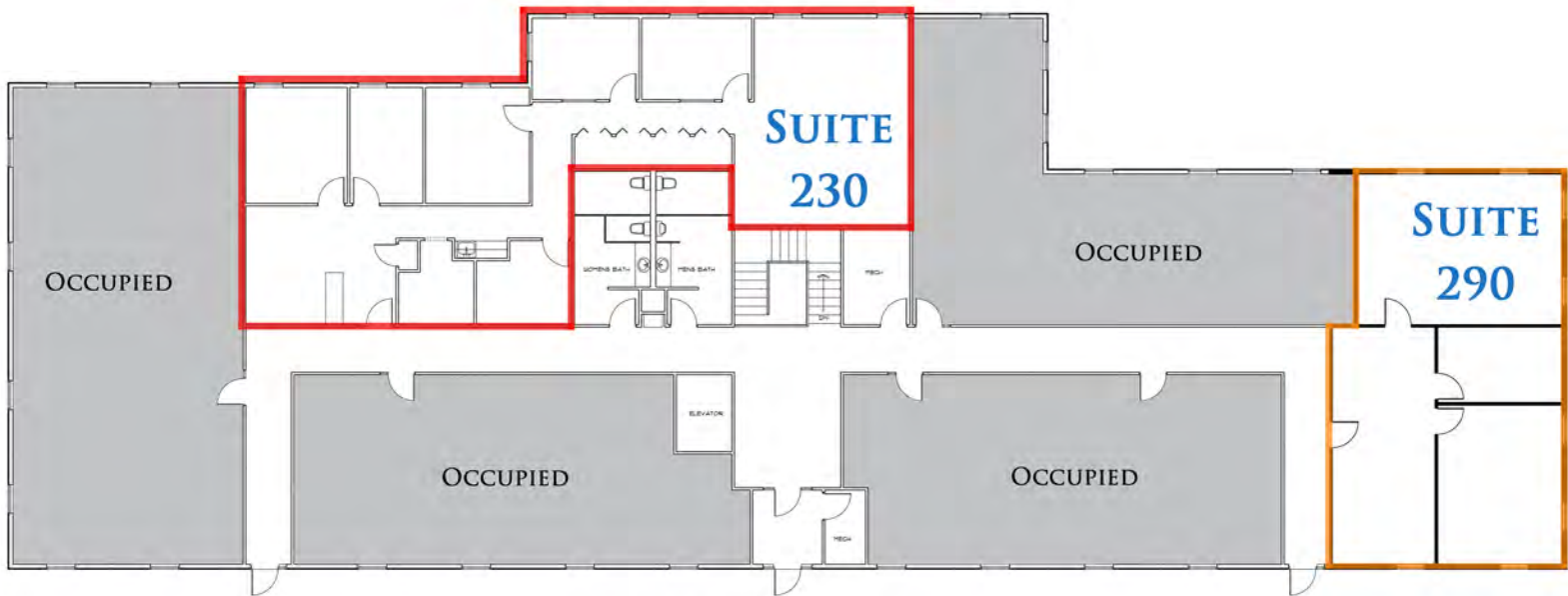
jeff@essencerealestate.com

COMMERCIAL REAL ESTATE SINCE 1990

OFFICE: 651-482-1871

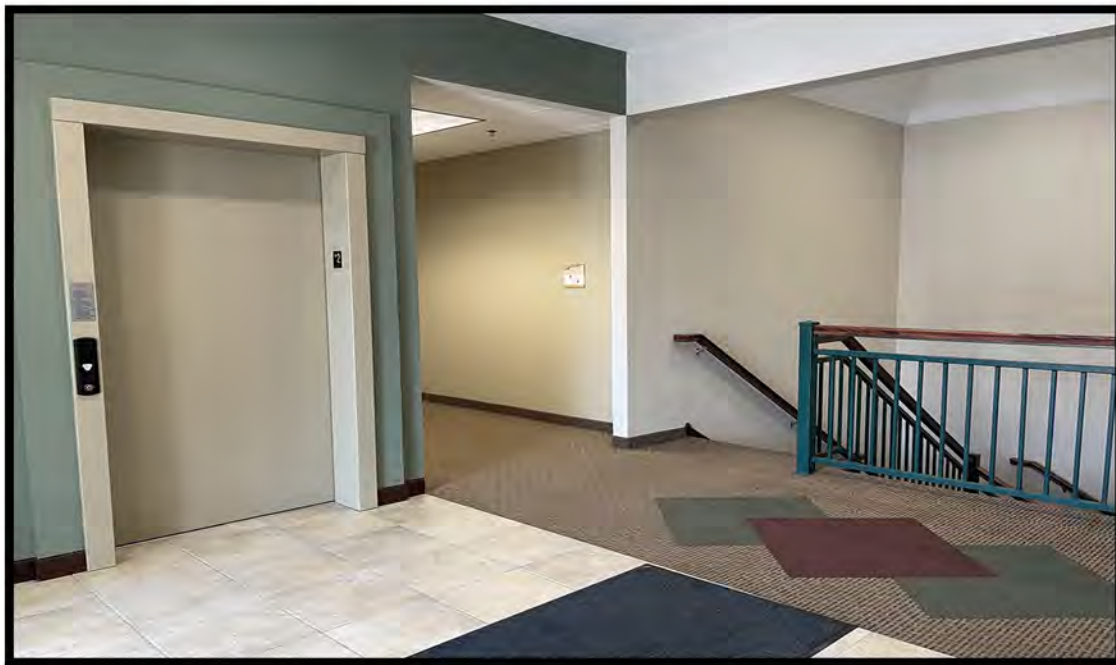
SHOREVIEW OFFICE PARK

1000 COUNTY ROAD E • SHOREVIEW, MN 55126



MAIN LEVEL

SUITE 230	2,198 SF	APPROX. \$4,130 A MONTH
SUITE 290	1,357 SF	APPROX. \$2,550 A MONTH



ERSI

ESSENCE
REAL ESTATE
SERVICES INC.

COMMERCIAL REAL ESTATE SINCE 1990

JEFF NORDNESS

651-341-5044

jeff@essencerealestate.com

OFFICE: 651-482-1871