



ROBERT TREAT CENTER

An outstanding location to grow your business in Newark

Robert Treat Center

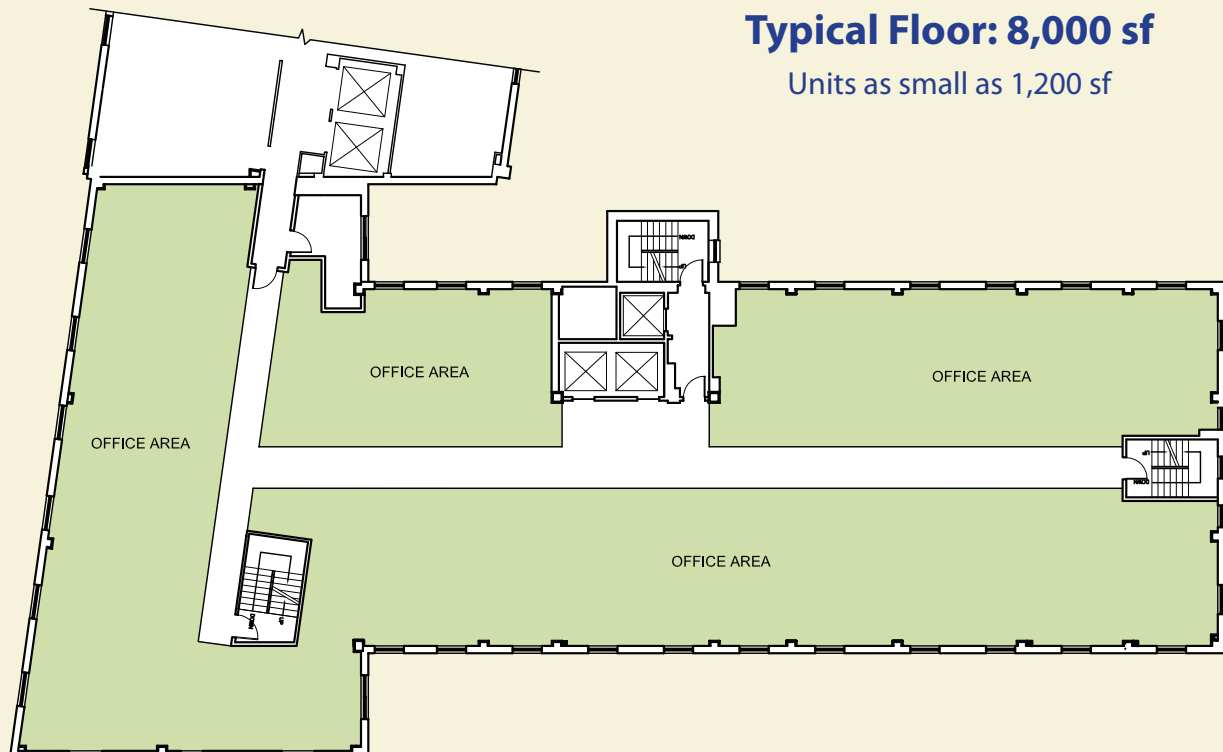
Property Features and Amenities

15-story office building in Newark's central business district:

- Responsive, on-site property management
- 24-/7 access
- 24-hour security
- 100,000 square feet rentable space
- Modernized accommodations
- State-of-the-art electronics
- Signage opportunities
- 8,000-square-foot floor plates
- Tenant build-outs to suit your needs
- Three new, computerized elevators

Excellent transportation access:

- Just minutes from Newark Airport and Manhattan
- Walking distance to NJPAC, Gateway Center, Penn Station and Broad Street Station
- Extensive bus and train lines, including PATH, NJ Transit and Amtrak's Northeast corridor
- Loop Bus service to and from Penn Station
- Light Rail System with station 1.5 blocks away
- Nearby surface/garage parking
- Easy access to NJ Turnpike; Garden State Parkway; Rt. 280; I-78; and Routes 1 & 9, 21 and 22

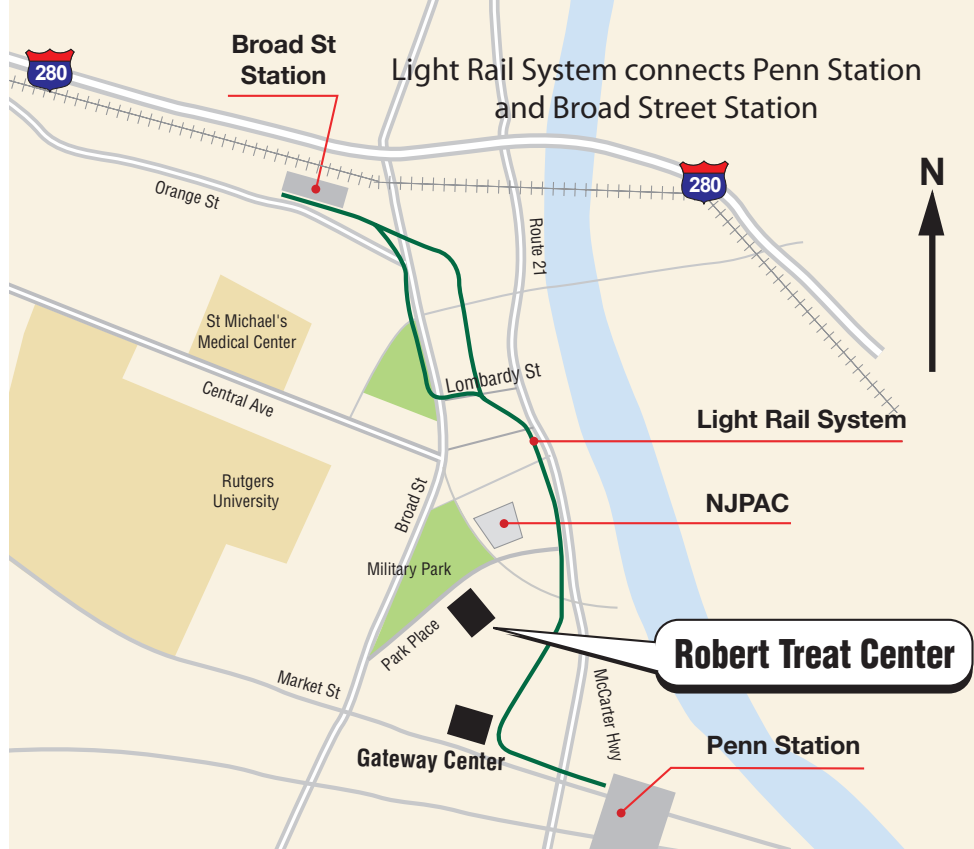


Outstanding Location and Value

Located at 50 Park Place, adjacent to Robert Treat Hotel, Robert Treat Center was The Berger Organization's first Newark office property acquired in 1986. Named after the founder of Newark, the celebrated office tower is located within the City's cultural, dining and entertainment hub – across from New Jersey Performing Arts Center and historic Military Park as well as a short distance to the Newark Museum, Prudential Center Arena, Rutgers Law, NJIT, and Seton Hall. Strategically situated with proximity to Newark's vast transportation network, the property is accessible to Newark Penn Station, Newark Light Rail and Newark Broad Street Station, offering direct service to Midtown Manhattan.

The prestigious roster of tenants at Robert Treat Center enjoys first-class amenities associated with the Berger-owned and operated Robert Treat Hotel. These include Maize, a casual-style restaurant; high-tech meeting and conference rooms; a state-of-the-art fitness center; a picturesque exterior roof garden; and beautifully appointed guest accommodations.

Custom-designed office space to suit your unique business requirements



Located in Newark's finest business district and close to all major attractions





ROBERT TREAT CENTER
FIFTY PARK PLACE
NEWARK, NEW JERSEY 07102

For a private viewing contact:

Brendan Berger, VP Leasing
973-623-3300 • brendan@bergerorg.com



Berger Organization
www.bergerorg.com