

EAST CAMPUS PLAZA

32129 WEYERHAEUSER WAY S



THE ANDOVER
COMPANY, INC.

CORFAC INTERNATIONAL



HIGH QUALITY
OFFICE SPACE IN THE
ESTEEMED EAST CAMPUS
NEIGHBORHOOD



EASY TO FIND WITH
IMMEDIATE ACCESS TO
I-5 VIA THE S 320TH ST
INTERCHANGE



LARGE WINDOWS &
PLENTY OF NATURAL
LIGHT CREATE A MORE
PRODUCTIVE WORK
ENVIRONMENT



PLENTIFUL FREE
4.0/1,000 SF PARKING
RATIO



STATE-OF-THE-ART
TELECOMMUNICATION
SERVICE THROUGH
CENTURYLINK &
COMCAST BUSINESS
CABLE



METRO BUS ROUTE
COMES TO BUILDING &
CLOSE TO THE EXTENSIVE
FEDERAL WAY TRANSIT
CENTER



GORGEOUS VIEWS OF
MT. RAINIER & BEAUTIFUL
SETTING IN 500 ACRE
WOODED CORPORATE
CAMPUS



EXTERIOR SIGNAGE
AVAILABLE TO LARGE
TENANTS



DAVITA CAFÉ IS 2
BLOCKS AWAY &
A MULTITUDE OF
RESTAURANTS ARE
WITHIN A 2-3 MINUTE
DRIVE



AERIAL VIEW

N

EAST CAMPUS
PLAZA

HomeGoods TRADER JOE'S DSW TJ-maxx

Hampton
by HILTON

BLACK ANGUS

BW
Best Western

Applebee's Bath & Body Works BUFFALO WILD WINGS CINEMARK DICK'S SPORTING GOODS FAMOUS footwear
FedEx Office FIVE GUYS KOHL'S macy's Panera BREAD target

RITE AID Michaels ROSS Total Wine & More



CURRENT ESTIMATED DRIVING TRAVEL TIMES

SEATAC INTERNATIONAL AIRPORT	15 MIN.
SEATTLE	25 MIN.
TACOMA	15 MIN.

EAST CAMPUS PLAZA | THE ANDOVER COMPANY, INC.

HIGH QUALITY OFFICE SPACE

Building Size	29,000 square feet
Floor Size	14,500 square feet
Design	Design by Collins Woerman
Parking	Surface stalls at 4/1,000 square feet in lighted parking lot
Location	Building is located just southeast of the corner of I-5 and S 320 th St in Federal Way. Access to Seattle, Tacoma, and SeaTac International Airport is excellent.
Amenities Galore	Hotels two minutes away; multitude of restaurants, retail and other services in and around The Commons at Federal Way half a mile away. DaVita Café (two blocks away) serves excellent coffee/ espresso, breakfast and lunch.
Structure	Concrete tilt-up construction
Elevators	One
Telecommunications	Telecommunication and fiber serves provided by CenturyLink and Comcast Business Cable



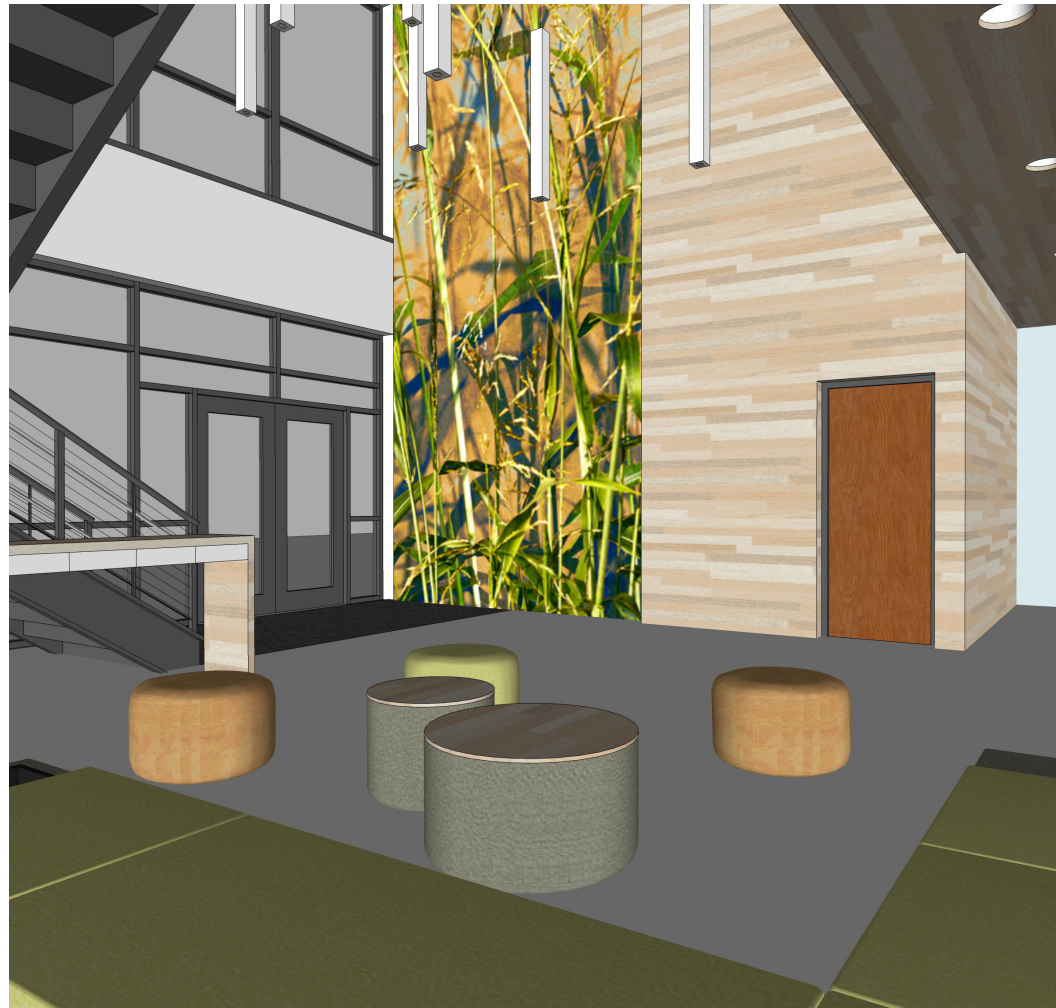
AVAILABLE SPACES

**Updated May 12, 2021*

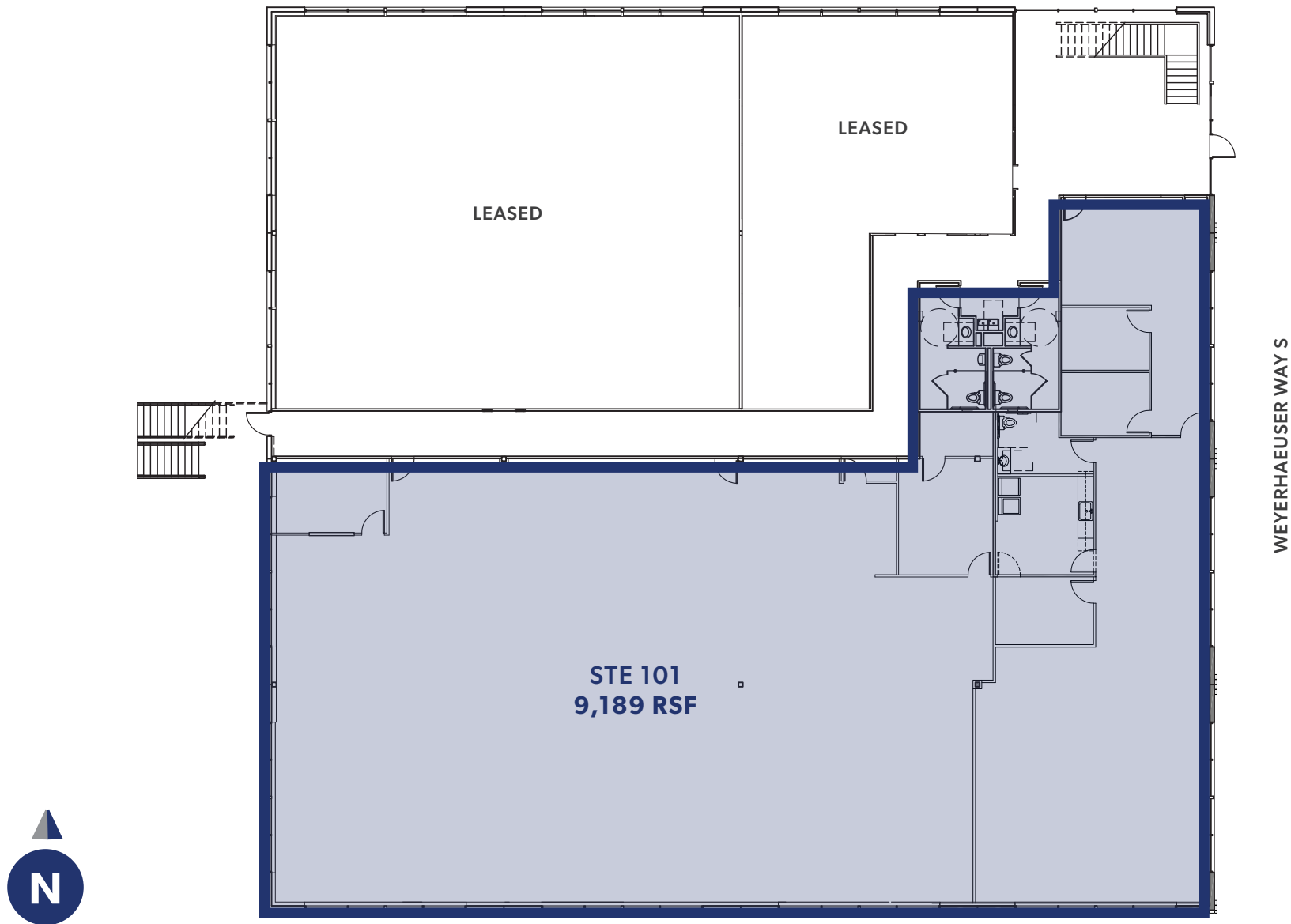
FLOOR/STE	RENTABLE SF	COMMENTS
FLOOR 1 - STE 101	9,189 SF	Great open work space with plenty of natural light. This space is divisible to 3,000 SF. It has lobby exposure and can offer exterior building signage for larger tenants.



EAST CAMPUS PLAZA | THE ANDOVER COMPANY, INC.



AVAILABLE SPACE





MIKE HEMPHILL
(206) 550-4176
mhemphill@andoverco.com

JIM BISSET
(206) 769-3633
jbisset@andoverco.com



EAST CAMPUS PLAZA

32129 WEYERHAEUSER WAY S