

# WASHINGTON BOAT CENTER

705 NE NORTHLAKE WAY  
SEATTLE, WA

FOR MORE INFORMATION OR TO  
SCHEDULE A TOUR, PLEASE CONTACT:



**JENNY ARVISO**  
206.659.2151  
[jenny@incityinc.com](mailto:jenny@incityinc.com)

**COURTNEY BUCK**  
206.499.1794  
[courtney@incityinc.com](mailto:courtney@incityinc.com)



**CHRIS LANGER**  
425.646.5228  
[langner@broderickgroup.com](mailto:langner@broderickgroup.com)

*The information contained herein has been given to us by the owner or sources that we deem reliable. We have no reason to doubt its accuracy, but we do not guarantee it. Prospective tenants should carefully verify all information contained herein.*



**WA** BOAT  
CENTER

  
**PARK YOUR BOAT  
NEXT DOOR TO  
YOUR OFFICE!**

520

# WASHINGTON BOAT CENTER

705 NE NORTHLAKE WAY  
SEATTLE, WA

FOR MORE INFORMATION OR TO  
SCHEDULE A TOUR, PLEASE CONTACT:



JENNY ARVISO  
206.659.2151  
[jenny@incityinc.com](mailto:jenny@incityinc.com)

COURTNEY BUCK  
206.499.1794  
[courtney@incityinc.com](mailto:courtney@incityinc.com)



CHRIS LANGER  
425.646.5228  
[langer@broderickgroup.com](mailto:langer@broderickgroup.com)

*The information contained herein has been given to us by the owner or sources that we deem reliable. We have no reason to doubt its accuracy, but we do not guarantee it. Prospective tenants should carefully verify all information contained herein.*

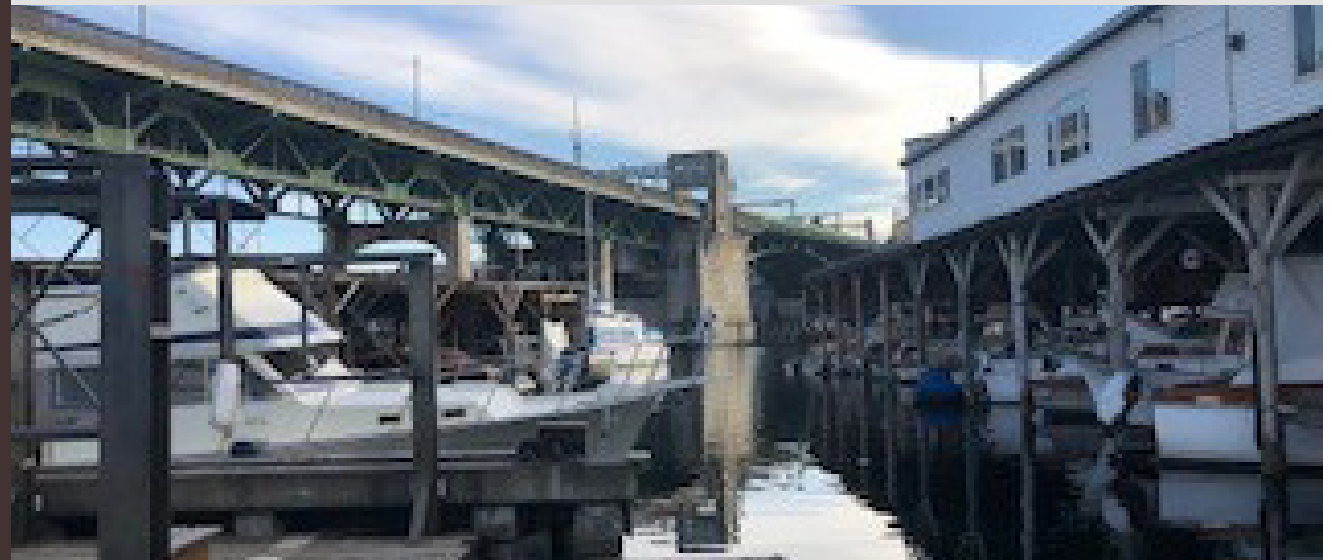
## FUTURE BUILDING UPGRADES

NEW WINDOWS, SIDING, SIGNAGE AND  
TENANT IMPROVEMENTS

### CURRENT AVAILABILITIES

SUITE	RSF	AVAILABILITY	RENTAL RATE
<u>Suite 701</u>	1,922 RSF	Now	\$5,500/Mo, Gross (\$34/SF/Year)

**COMMENTS:** Office space on the water and part of a larger marina, ample free parking in the area, right off the Burke Gilman Trail, high ceilings, common showers, open outdoor deck area in front, signage and visibility.



# WASHINGTON BOAT CENTER

705 NE NORTHLAKE WAY  
SEATTLE, WA

FOR MORE INFORMATION OR TO  
SCHEDULE A TOUR, PLEASE CONTACT:



JENNY ARVISO  
206.659.2151  
[jenny@incityinc.com](mailto:jenny@incityinc.com)

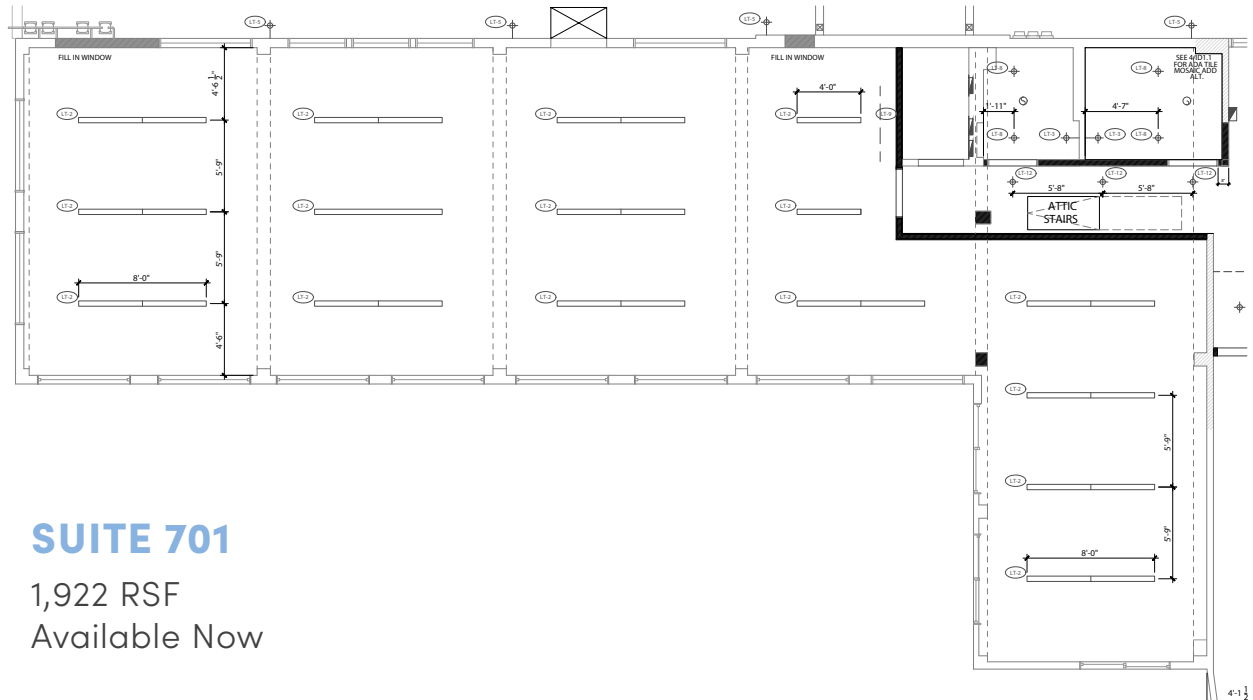
COURTNEY BUCK  
206.499.1794  
[courtney@incityinc.com](mailto:courtney@incityinc.com)



CHRIS LANGER  
425.646.5228  
[langer@broderickgroup.com](mailto:langer@broderickgroup.com)

*The information contained herein has been given to us by the owner or sources that we deem reliable. We have no reason to doubt its accuracy, but we do not guarantee it. Prospective tenants should carefully verify all information contained herein.*

# FLOOR PLAN LEVEL 1



## SUITE 701

1,922 RSF  
Available Now

[BACK TO CURRENT AVAILABILITIES](#)



# WASHINGTON BOAT CENTER

705 NE NORTHLAKE WAY  
SEATTLE, WA



FOR MORE INFORMATION OR TO  
SCHEDULE A TOUR, PLEASE CONTACT:



**JENNY ARVISO**  
206.659.2151  
[jenny@incityinc.com](mailto:jenny@incityinc.com)

**COURTNEY BUCK**  
206.499.1794  
[courtney@incityinc.com](mailto:courtney@incityinc.com)



**CHRIS LANGER**  
425.646.5228  
[langer@broderickgroup.com](mailto:langer@broderickgroup.com)

*The information contained herein has been given to us by the owner or sources that we deem reliable. We have no reason to doubt its accuracy, but we do not guarantee it. Prospective tenants should carefully verify all information contained herein.*



# WASHINGTON BOAT CENTER

705 NE NORTHLAKE WAY  
SEATTLE, WA

FOR MORE INFORMATION OR TO  
SCHEDULE A TOUR, PLEASE CONTACT:



JENNY ARVISO  
206.659.2151  
[jenny@incityinc.com](mailto:jenny@incityinc.com)

COURTNEY BUCK  
206.499.1794  
[courtney@incityinc.com](mailto:courtney@incityinc.com)



CHRIS LANGER  
425.646.5228  
[langner@broderickgroup.com](mailto:langner@broderickgroup.com)

*The information contained herein has been given to us by the owner or sources that we deem reliable. We have no reason to doubt its accuracy, but we do not guarantee it. Prospective tenants should carefully verify all information contained herein.*

