

# FOR SALE

USER BUILDING OR GREAT REDEVELOPMENT SITE



## 15951 PARK ROW

HOUSTON, TX 77084

20,164 SF BUILDING ON 4 ACRES

**STEPHEN SCHNEIDAU**

+1 713 963 2822

[stephen.schneidau@cushwake.com](mailto:stephen.schneidau@cushwake.com)



# OVERVIEW

15951 PARK ROW

## PROPERTY OVERVIEW

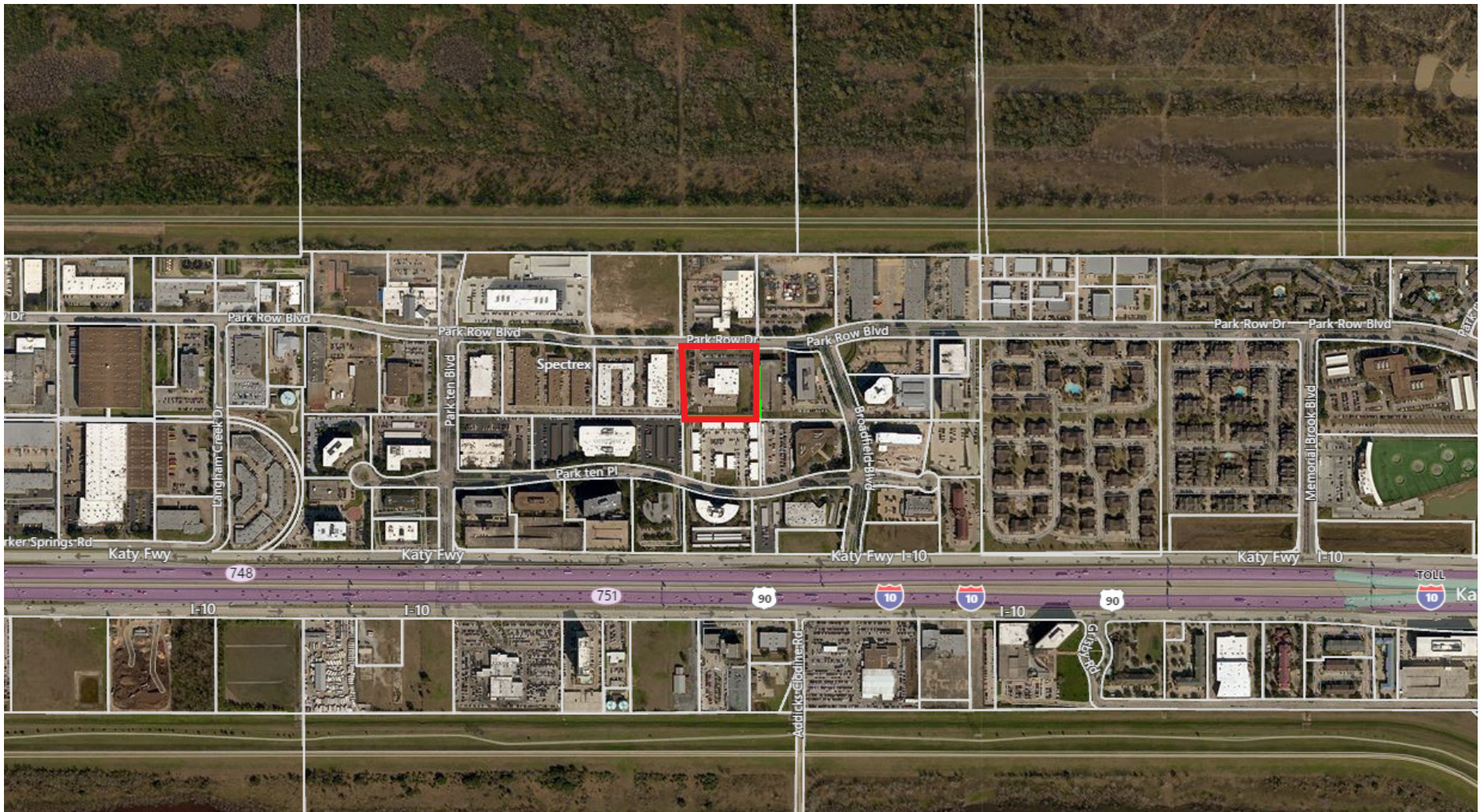
<b>Location</b>	15951 Park Row Houston, TX 77084
<b>Land Area</b>	+/-4 Acres
<b>Rentable Area</b>	+/-20,164 SF
<b>Office Area</b>	+/-11,000 SF
<b>Warehouse Area</b>	+/-9,164 SF
<b>Clear Height</b>	14' - 16'
<b>Loading</b>	Rear load configuration with grade and dock loading
<b>Parking</b>	+/-60 parking spaces in front
<b>Property Features</b>	<ul style="list-style-type: none"><li>• Built in 1972</li><li>• Deed restricted park</li><li>• Located in Harris County/City of Houston in the Far West Submarket</li><li>• 70' truck court</li></ul>
<b>Sales Price</b>	\$2,000,000

## AERIAL / MAP



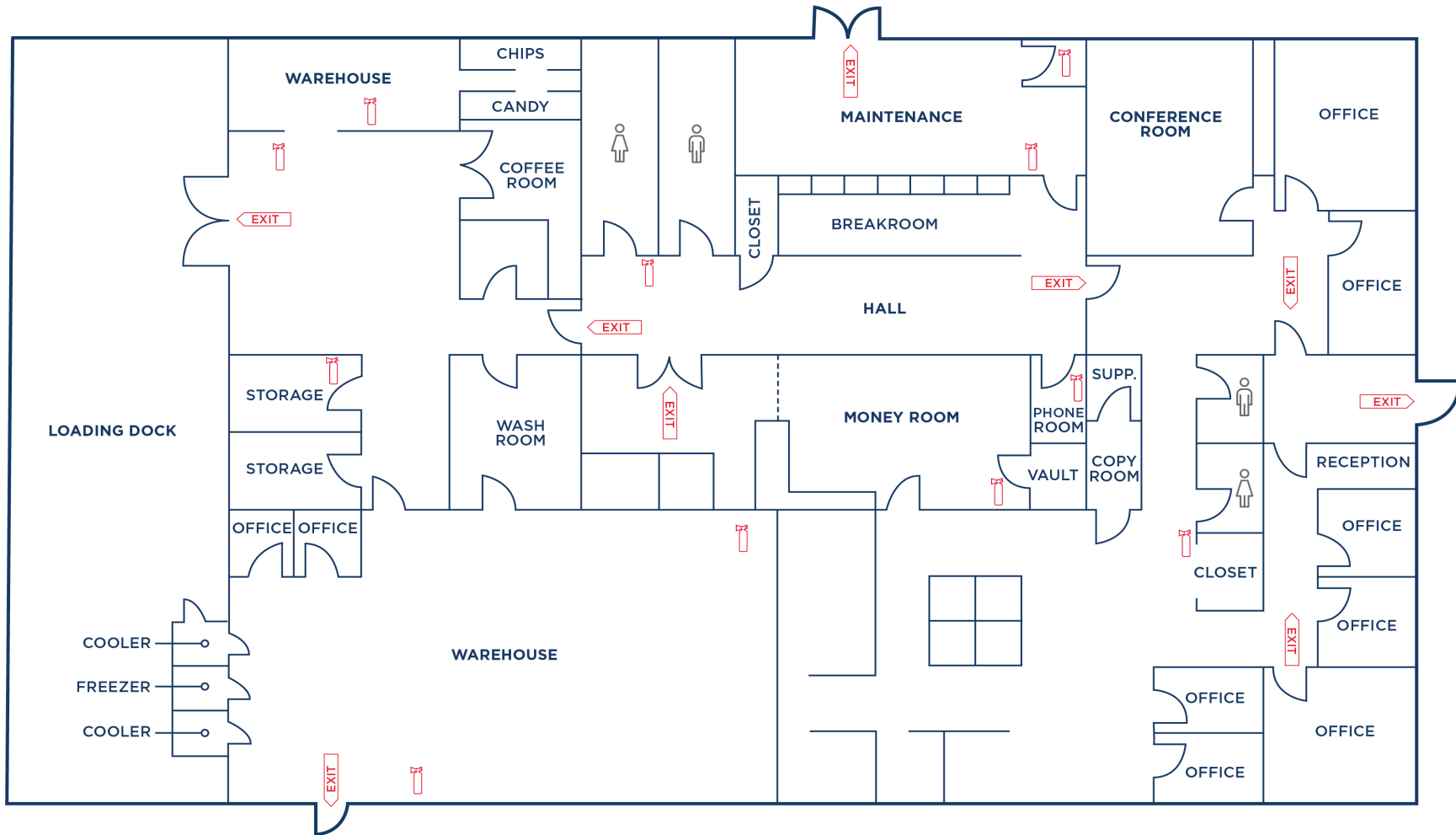
## FOR MORE INFORMATION, PLEASE CONTACT:

**STEPHEN SCHNEIDAU**  
+1 713 963 2822  
stephen.schneidau@cushwake.com



**FOR MORE INFORMATION, PLEASE CONTACT:**

**STEPHEN SCHNEIDAU**  
+1 713 963 2822  
[stephen.schneidau@cushwake.com](mailto:stephen.schneidau@cushwake.com)



**FOR MORE INFORMATION, PLEASE CONTACT:**

**STEPHEN SCHNEIDAU**  
+1 713 963 2822  
stephen.schneidau@cushwake.com