

198 EAST 11TH STREET AKA 55 THIRD AVENUE

EAST VILLAGE

NEW YORK
NY



SPACE DETAILS

LOCATION

South block between Second and Third Avenues

APPROXIMATE SIZE

Ground Floor	1,450 SF
Lower Level	785 SF
Total	2,235 SF

CEILING HEIGHT

Ground Floor	13 FT
Lower Level	11 FT

FRONTAGE

33 FT on East 11th Street

POSSESSION

May 1, 2019

SITE STATUS

Currently Martina Pizzeria

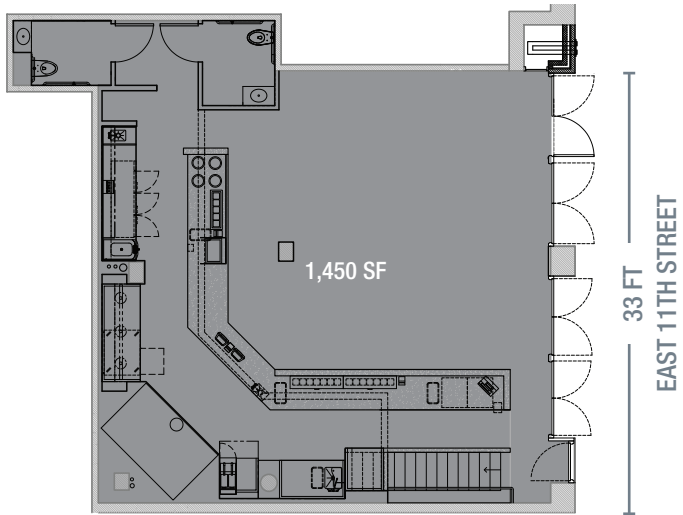
NEIGHBORS

Wagamama, The Smith, AMC theater, Westside Market

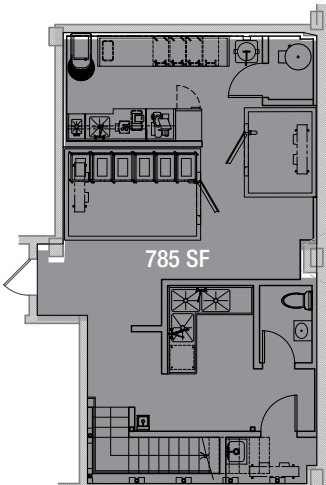
COMMENTS

Venting in place
Newly installed facade with French doors for indoor and outdoor seating

GROUND FLOOR



LOWER LEVEL



AREA RETAIL



CONTACT EXCLUSIVE AGENTS

BENJAMIN BIRNBAUM
212.850.5474
bbirnbaum@ngkf.com

ANDREW TAUB
212.372.2011
andrew.taub@ngkf.com



125 PARK AVENUE, NEW YORK, NY 10017
212.372.2000 INQUIRIES@NGKF.COM NGKF.COM



521 FIFTH AVENUE, NEW YORK, NY 10175
212.599.3700 INFO@RKF.COM RKF.COM