

Brookfield Properties



Park Ten Business Center

16820 Barker Springs Road, Suite 522, Houston, Tx

Located in the heart of Houston's Energy Corridor with outstanding access throughout the City via I-10, HWY 6, Beltway 8, and the Grand Parkway. The space offers a rare mixed space that can be modified to fit any industrial, office, or retail needs with I-10 frontage.

TOTAL BUILDING: 20,957 SF

AVAILABLE: Suite 522 - 7,823 SF

OFFICE AREA: 7,823 SF

CONSTRUCTION: concrete tilt-wall

PARKING: 1.00:1000, approximate

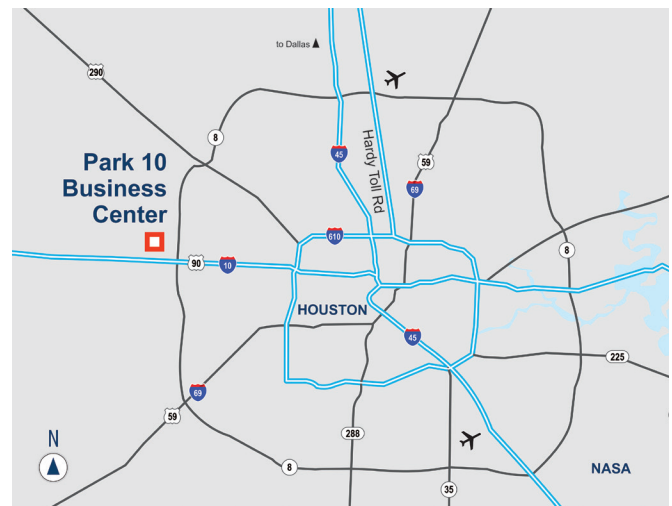
CLEAR HEIGHT: 12'

FIRE SPRINKLER: None

LOADING: 1 Semi-Dock, Rear Loading Door

www.brookfieldproperties.com

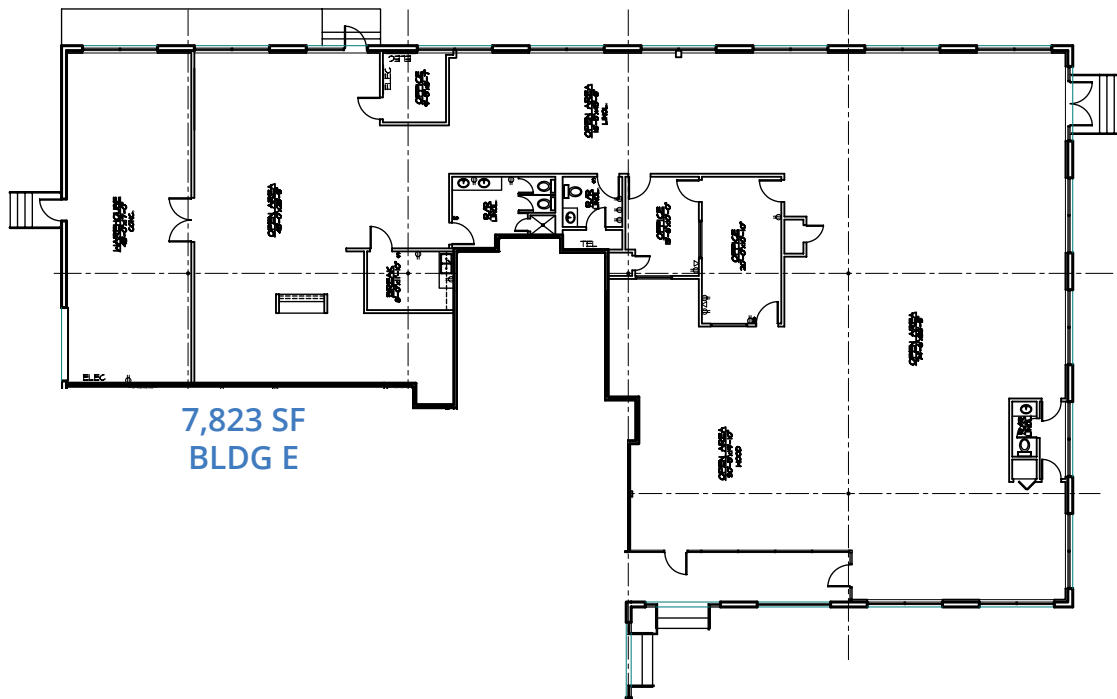
Location



- Close proximity to Beltway 8, Hwy 290 & the Grand Parkway
- Desired West Houston submarket
- 22 miles W of Downtown Houston

Brookfield Properties

Park Ten Business Center, Suite 522
16820 Barker Springs Road, Houston, TX



For more information, or to set up a tour, please contact:



Dayne Wunderlich
D 713.339.5329
dwunderlich@insiterealty.com

Ryley Caton
D 713.339.5336
rcaton@insiterealty.com

Logan Greer
D 713.339.5363
lgreer@insiterealty.com