
SOUTH BRUNSWICK TOWNSHIP, NJ

Princeton Park

1100 Cornwall Road

30,000 to 60,000 RSF available for \$14.00 psf plus electric; as-is; short term leases available



Features

- 176,000 SF Class A office building
- Granite exterior
- Ribbon glass window line
- Skylit 3-story atrium lobby
- Glass enclosed elevators
- Exterior balconies (floors 2 & 3)
- 30,000 to 60,000 RSF available for \$14.00 psf plus electric; as-is; short term leases available
- Strategically located off Route 1 and within minutes of Routes 18, 287, 130 & 27 and New Jersey Turnpike Exits 8A & 9 (I-95)
- Generous parking ratio of 5:1000 SF
- Amenities: Café, conference/training center and electric car charging stations

For information, please contact:

Adam Silver

t 732-867-9555

adam.silver@nmrk.com

201 Route 17 North, Rutherford, NJ 07070

One Tower Center Boulevard, Suite 2201, East Brunswick, NJ 08816

nmrk.com

Newmark, Licensed Real Estate Broker. The information contained herein has been obtained from sources deemed reliable but has not been verified and no guarantee, warranty or representation, either express or implied, is made with respect to such information. Terms of sale or lease and availability are subject to change or withdrawal without notice.

NEWMARK

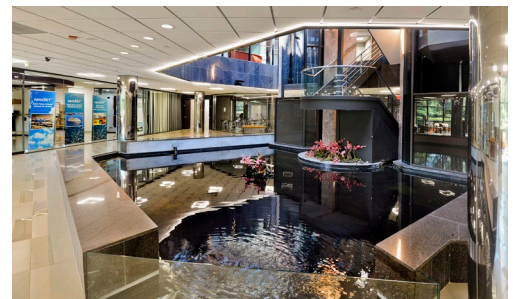
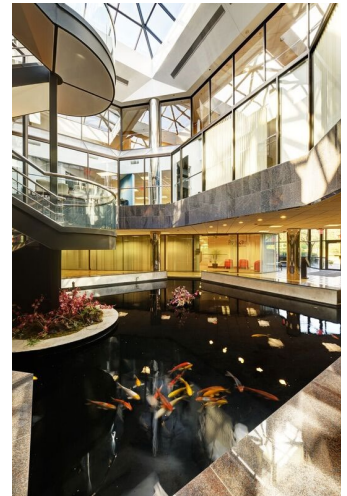
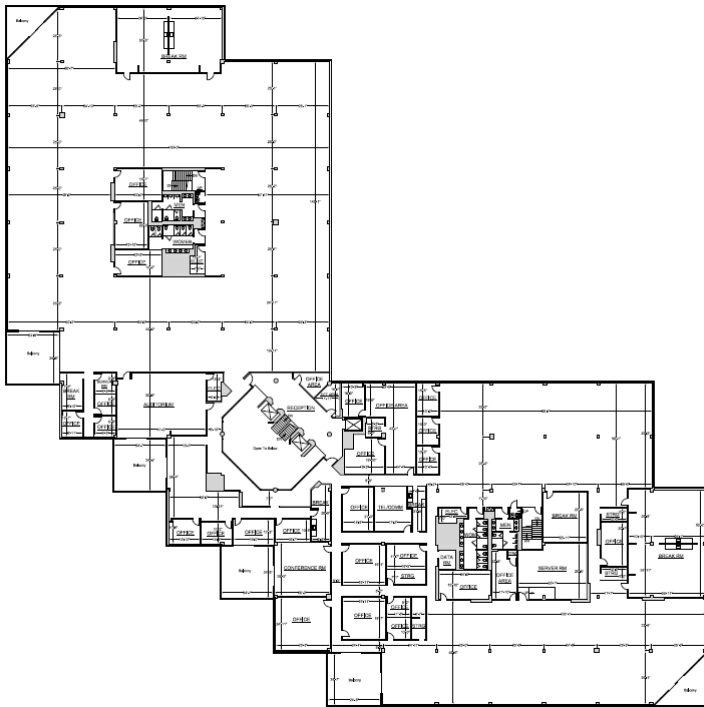
MAP & FLOOR PLANS

1100 Cornwall Road

Map



Floor Plan – 3rd floor (approx. 60,000 RSF)



201 Route 17 North, Rutherford, NJ 07070
One Tower Center Boulevard, Suite 2201, East Brunswick, NJ 08816

nmrk.com

Newmark, Licensed Real Estate Broker. The information contained herein has been obtained from sources deemed reliable but has not been verified and no guarantee, warranty or representation, either express or implied, is made with respect to such information. Terms of sale or lease and availability are subject to change or withdrawal without notice.

