

245 W. North Avenue

Chicago, IL 60610 | Old Town

For Lease

Retail Property



- ▶ ±1,600 SF and ±3,600 SF endcap opportunity available in dense Old Town market
- ▶ Strong visibility to high pedestrian and vehicle traffic on North Avenue
- ▶ Close vicinity to CTA Brown & Purple Line Sedgwick 'L' Station (1.2M Annual Riders)
- ▶ Co-tenancy with Rosin Eyecare
- ▶ Positioned between recently developed luxury apartment buildings

DEMOGRAPHICS

	.25 MILE	.5 MILE	1 MILE
Estimated Population	8,078	25,864	73,489
Adj. Daytime Demographics	5,557	16,668	72,447
Estimated Households	4,848	15,562	43,633
Estimated Average Household Income	\$153,888	\$148,422	\$139,463

ALLEN JOFFE

312.275.3120
allen@baumrealty.com

TIM ROSSI

312.275.3121
tim@baumrealty.com



© 2020 All information supplied is from sources deemed reliable and is furnished subject to errors, omissions, modifications, removal of the listing from sale or lease, and to any listing conditions, including the rates and manner of payment of commissions for particular offerings, the terms of which are available to principals or duly licensed brokers. Any square footage dimensions set forth are approximate.

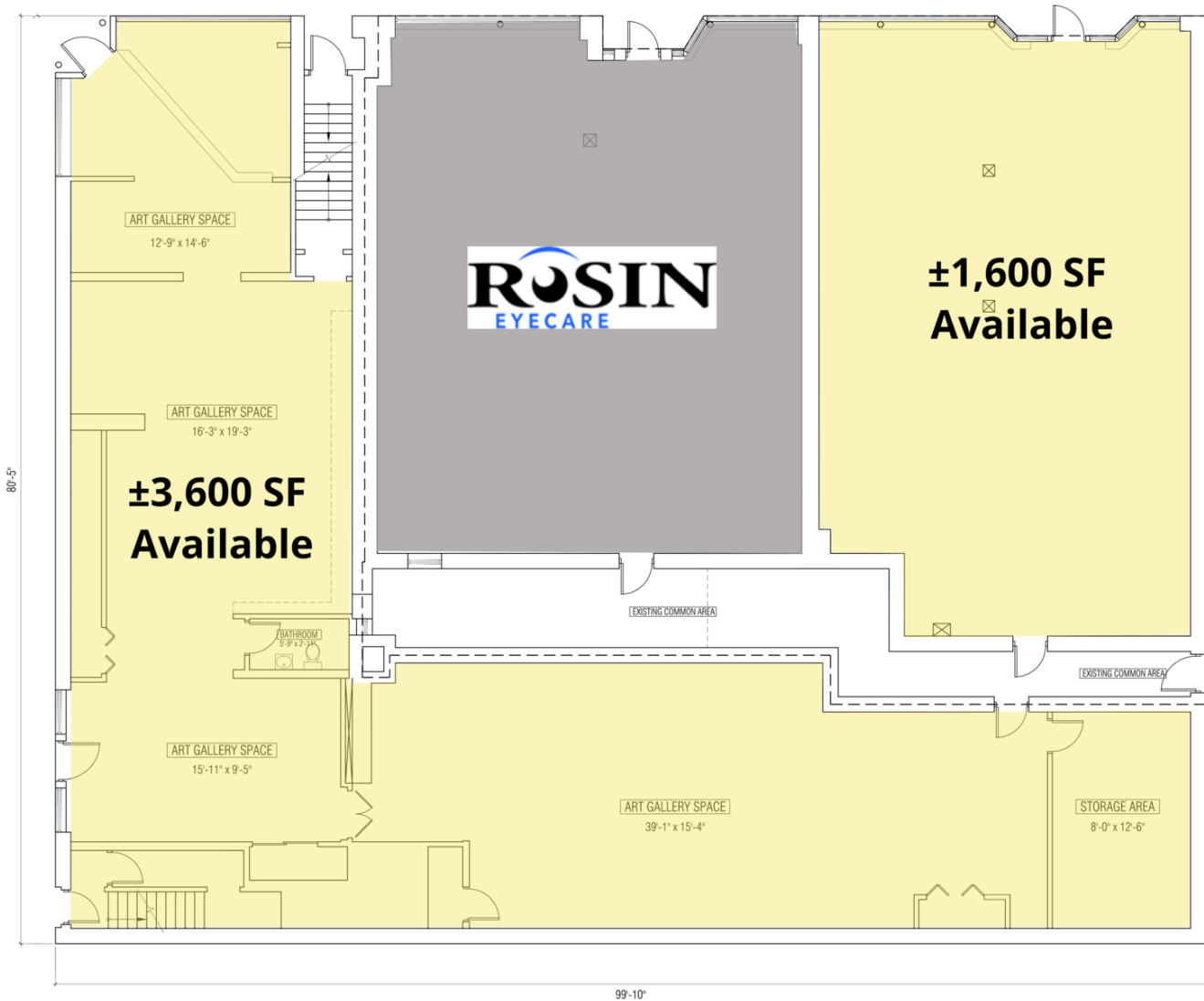
245 W. North Avenue

Chicago, IL 60610 | Old Town

For Lease

Retail Property

W. North Avenue



ALLEN JOFFE
312.275.3120
allen@baumrealty.com

TIM ROSSI
312.275.3121
tim@baumrealty.com



© 2020 All information supplied is from sources deemed reliable and is furnished subject to errors, omissions, modifications, removal of the listing from sale or lease, and to any listing conditions, including the rates and manner of payment of commissions for particular offerings, the terms of which are available to principals or duly licensed brokers. Any square footage dimensions set forth are approximate.

245 W. North Avenue
Chicago, IL 60610



Google

Map data © 2020 Google Imagery © 2020 , Maxar Technologies, Sanborn, U.S. Geological Survey, USDA Farm Service Agency



© 2020 All information supplied is from sources deemed reliable and is furnished subject to errors, omissions, modifications, removal of the listing from sale or lease, and to any listing conditions, including the rates and manner of payment of commissions for particular offerings, the terms of which are available to principals or duly licensed brokers. Any square footage dimensions set forth are approximate.

