

OFFICE FOR LEASE

# FAIRVIEW EXECUTIVE PLAZA I

333 SALEM PLACE - FAIRVIEW HEIGHTS, IL 62208 I-64 & RTE. 159



## PROPERTY DESCRIPTION

Strategically located in the Fairview Heights Office Park, Fairview Executive Plaza I is situated at the center of a premier business and dynamic growth area.

Bordered by I-64 and Route 159, Fairview Executive Plaza I is directly across from St. Clair Square Mall and offers high visibility, convenient access to all markets and close proximity to Downtown St. Louis (15 minutes), Scott Airforce Base/Mid America Airport (12 minutes) and Lambert St. Louis International Airport (30 minutes).

- 879 - 4,904 sf available
- Two-story Class A office building
- Monument signage available
- Immediate access to I-64 & Route 159
- Dozens of restaurants and services within the immediate area
- Convenient to I-255, I-70, I-55 and Illinois Routes 157, 158, 159 and 143
- Full Service Lease Rate: \$21.90 psf



**BALKE BROWN**  
**TRANSWESTERN**<sup>®</sup>

1001 Highlands Plaza Drive West, Suite 150  
St. Louis, MO 63110  
p: 314.621.1414 | [www.balkebrown.com](http://www.balkebrown.com)

## LEASING INFORMATION

**ELLEN MANNION**  
314.880.0426  
[emannion@balkebrown.com](mailto:emannion@balkebrown.com)

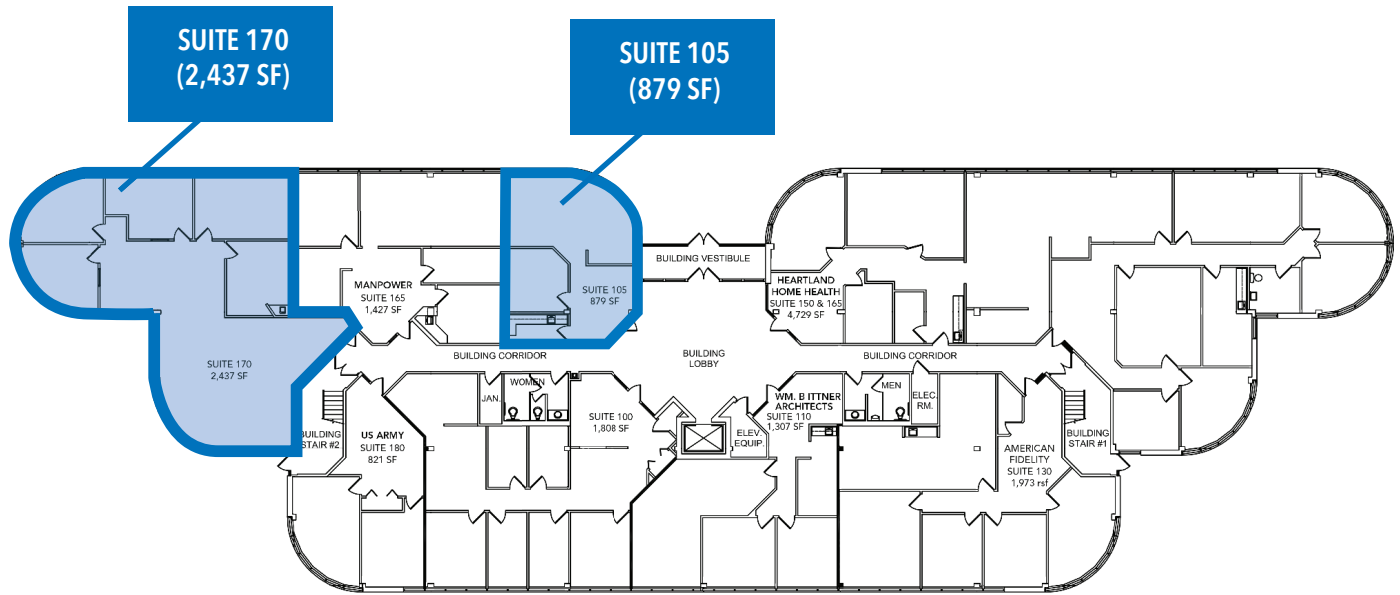
**MICHAEL HOLLAND**  
314.880.0425  
[mholland@balkebrown.com](mailto:mholland@balkebrown.com)

The information provided herein was obtained from sources believed reliable; however, Transwestern makes no guarantees, warranties or representations as to the completeness or accuracy thereof. The presentation of this property is submitted subject to errors, omissions, change of price or conditions, prior sale or lease, or withdrawal without notice. Copyright © 2015 Transwestern.

OFFICE FOR LEASE

# FAIRVIEW EXECUTIVE PLAZA I

333 SALEM PLACE - FAIRVIEW HEIGHTS, IL 62208 I-64 & RTE. 159



1ST FLOOR



1001 Highlands Plaza Drive West, Suite 150  
St. Louis, MO 63110  
p: 314.621.1414 | [www.balkebrown.com](http://www.balkebrown.com)

## LEASING INFORMATION

**ELLEN MANNION**  
314.880.0426  
[emannion@balkebrown.com](mailto:emannion@balkebrown.com)

**MICHAEL HOLLAND**  
314.880.0425  
[mholland@balkebrown.com](mailto:mholland@balkebrown.com)

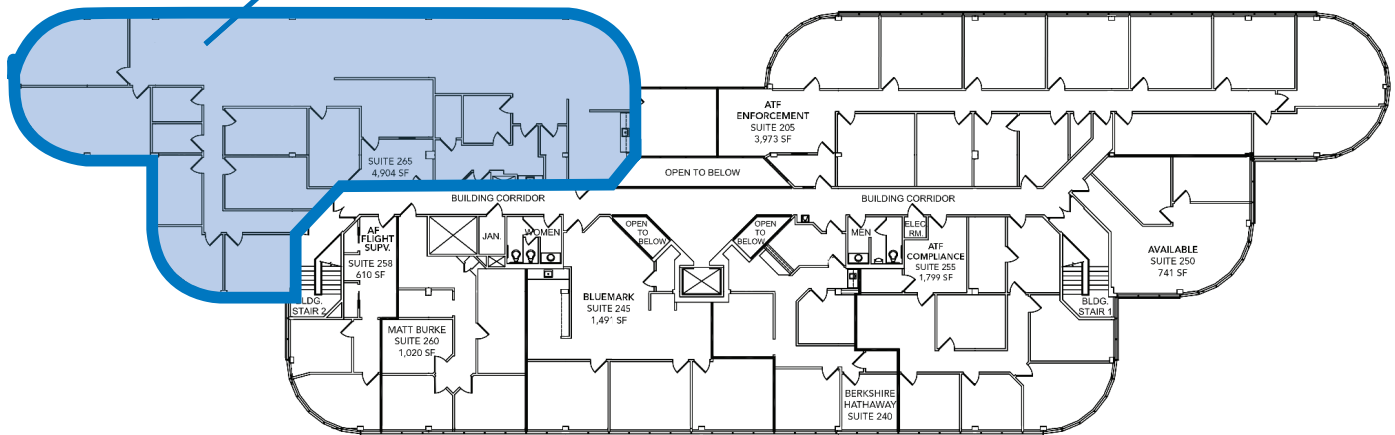
The information provided herein was obtained from sources believed reliable; however, Transwestern makes no guarantees, warranties or representations as to the completeness or accuracy thereof. The presentation of this property is submitted subject to errors, omissions, change of price or conditions, prior sale or lease, or withdrawal without notice. Copyright © 2015 Transwestern.

OFFICE FOR LEASE

# FAIRVIEW EXECUTIVE PLAZA I

333 SALEM PLACE - FAIRVIEW HEIGHTS, IL 62208 I-64 & RTE. 159

**SUITE 265  
(4,904 SF)  
AVAIL 4/1/19**



**2ND FLOOR**



1001 Highlands Plaza Drive West, Suite 150  
St. Louis, MO 63110  
p: 314.621.1414 | www.balkebrown.com

## LEASING INFORMATION

**ELLEN MANNION**  
314.880.0426  
emannion@balkebrown.com

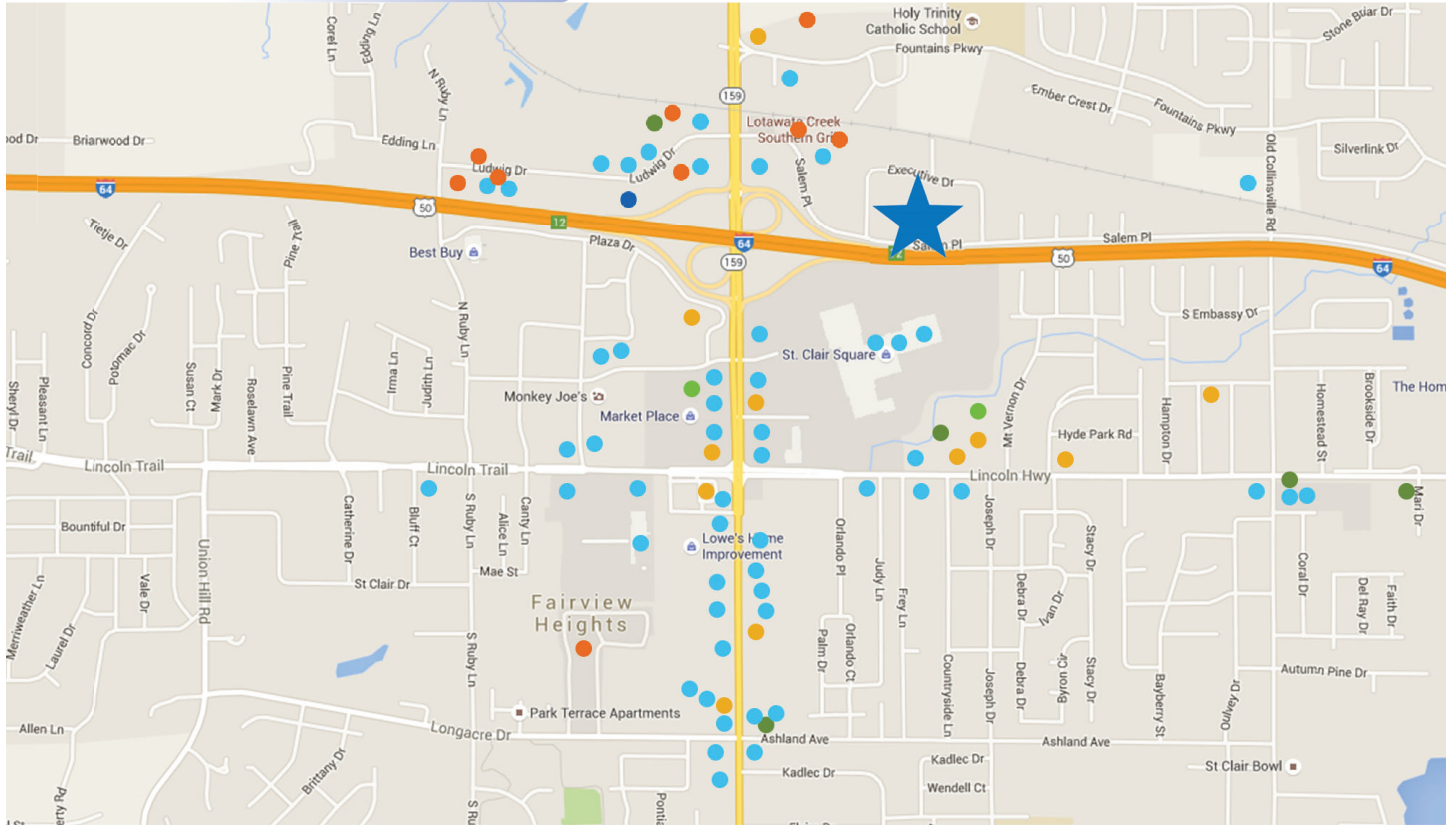
**MICHAEL HOLLAND**  
314.880.0425  
mholland@balkebrown.com

The information provided herein was obtained from sources believed reliable; however, Transwestern makes no guarantees, warranties or representations as to the completeness or accuracy thereof. The presentation of this property is submitted subject to errors, omissions, change of price or conditions, prior sale or lease, or withdrawal without notice. Copyright © 2015 Transwestern.

OFFICE FOR LEASE

# FAIRVIEW EXECUTIVE PLAZA I

333 SALEM PLACE - FAIRVIEW HEIGHTS, IL 62208 I-64 & RTE. 159



## AMENITIES MAP

### DINING

- Lotawata Creek
- TGI Fridays
- Shogun Japanese Steakhouse
- Andria's Restaurant
- Houlihan's
- Bob Evans
- Olive Garden
- Applebee's
- Joe's Crab Shack
- Sbarro
- Panda Express
- Charley's Grilled Subs

- Sarku Japan
- Gyro Gyro
- Cheddar's
- Taco Bell
- Ruby Tuesday
- Hooters
- Boston Market
- Wasabi Sushi Bar
- Red Robin
- White Castle
- Imo's Pizza
- Arby's
- Fortel's Pizza
- Lilly Steak & Grill
- China King

- The Chuck Wagon
- Burger King
- Dandy Inn Irish Pub
- Penn Station
- Subway
- McAlister's Deli
- Long John Silver's
- Show-Me's Sports Bar
- Honey Baked Ham
- McDonald's
- Chipotle
- Steak n Shake
- Cayden's Diner
- ERJ Dining
- Smokey Bones

- LongHorn Steakhouse
- Popeyes
- St. Louis Bread Co.
- Firehouse Subs
- Wing Street
- Pasta Fare
- Krispy Kreme
- Fazoli's
- Sushi Tatsu

### LODGING

- Holiday Inn
- America's Best Value Inn
- Four Points by Sheraton
- Super 8

- Drury Inn & Suites
- Fairfield Inn
- Comfort Suites
- Hampton Inn
- Marriott ExecuStay

### GROCERY & PHARMACY

- Fresh Thyme
- Schnucks

### BANKING

- Centrue Bank
- US Bank
- Associated Bank
- First Bank

- HSBC Bank
- First Community Credit Union
- F&M Bank
- Commerce Bank
- Regions Bank

### FITNESS CENTERS

- Planet Fitness
- Curves
- Club Fitness
- Dynamic Fitness

### ENTERTAINMENT

- St. Clair 10 Cine



1001 Highlands Plaza Drive West, Suite 150  
 St. Louis, MO 63110  
 p: 314.621.1414 | www.balkebrown.com

## LEASING INFORMATION

**ELLEN MANNION**  
 314.880.0426  
 emannion@balkebrown.com

**MICHAEL HOLLAND**  
 314.880.0425  
 mholland@balkebrown.com

OFFICE/MEDICAL FOR LEASE

# FAIRVIEW EXECUTIVE PLAZA II

331 SALEM PLACE - FAIRVIEW HEIGHTS, IL 62208 I-64 & RTE. 159



## PROPERTY DESCRIPTION

Strategically located in the Fairview Heights Office Park, Fairview Executive Plaza II is situated at the center of a premier business and dynamic growth area.

Bordered by I-64 and Route 159, Fairview Executive Plaza II is directly across from St. Clair Square Mall and offers high visibility, convenient access to all markets and close proximity to Downtown St. Louis (15 minutes), Scott Airforce Base/Mid America Airport (12 minutes) and Lambert St. Louis International Airport (30 minutes).

- 904 - 3,326 sf available
- Two-story Class A office building
- Monument signage available
- Immediate access to I-64 & Route 159
- Dozens of restaurants and services within the immediate area
- Convenient to I-255, I-70, I-55 and Illinois Routes 157, 158, 159 and 143
- Full Service Lease Rate: \$21.90 psf



**BALKE BROWN**  
**TRANSWESTERN**<sup>®</sup>

1001 Highlands Plaza Drive West, Suite 150  
St. Louis, MO 63110  
p: 314.621.1414 | www.balkebrown.com

## LEASING INFORMATION

**ELLEN MANNION**  
314.880.0426  
emannion@balkebrown.com

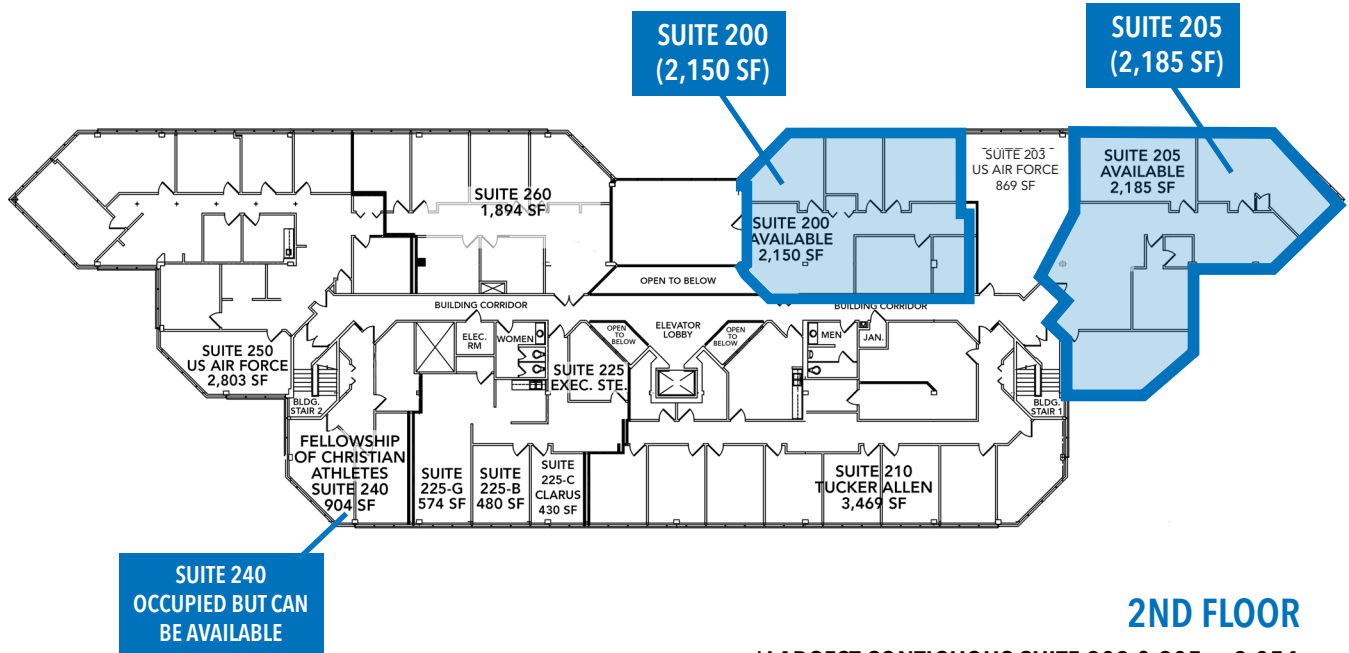
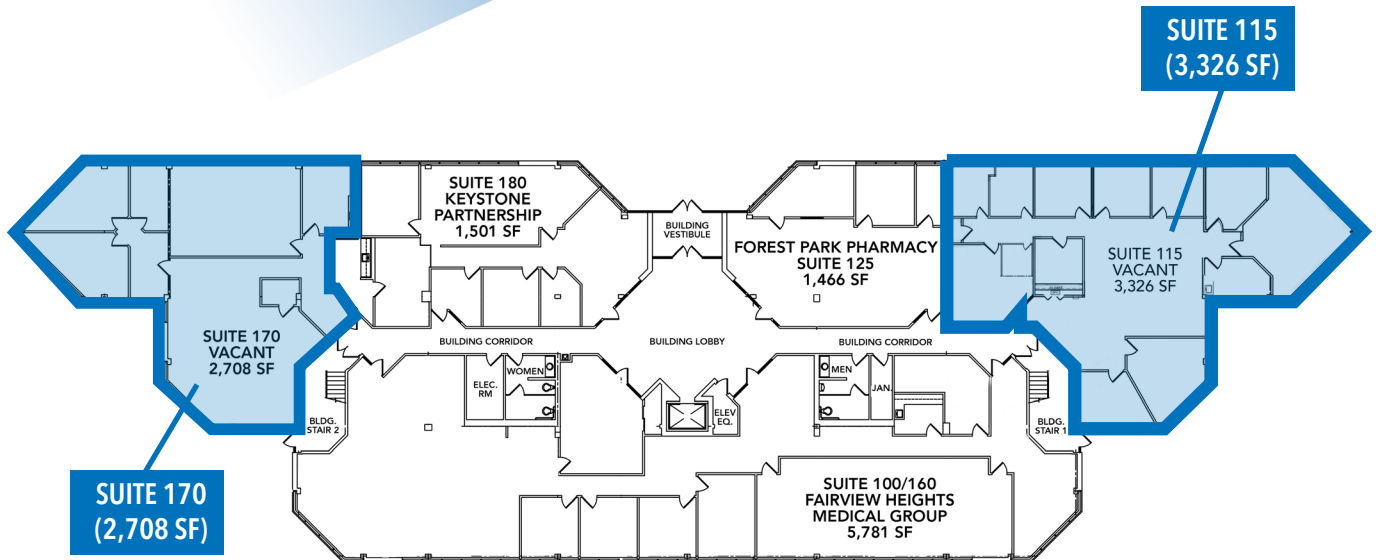
**MICHAEL HOLLAND**  
618.520.9443  
mholland@balkebrown.com

The information provided herein was obtained from sources believed reliable; however, Transwestern makes no guarantees, warranties or representations as to the completeness or accuracy thereof. The presentation of this property is submitted subject to errors, omissions, change of price or conditions, prior sale or lease, or withdrawal without notice. Copyright © 2015 Transwestern.

OFFICE/MEDICAL FOR LEASE

# FAIRVIEW EXECUTIVE PLAZA II

331 SALEM PLACE - FAIRVIEW HEIGHTS, IL 62208 I-64 & RTE. 159



## 2ND FLOOR

\*LARGEST CONTIGUOUS SUITE 203 & 205 = 3,054



1001 Highlands Plaza Drive West, Suite 150  
St. Louis, MO 63110  
p: 314.621.1414 | www.balkebrown.com

### LEASING INFORMATION

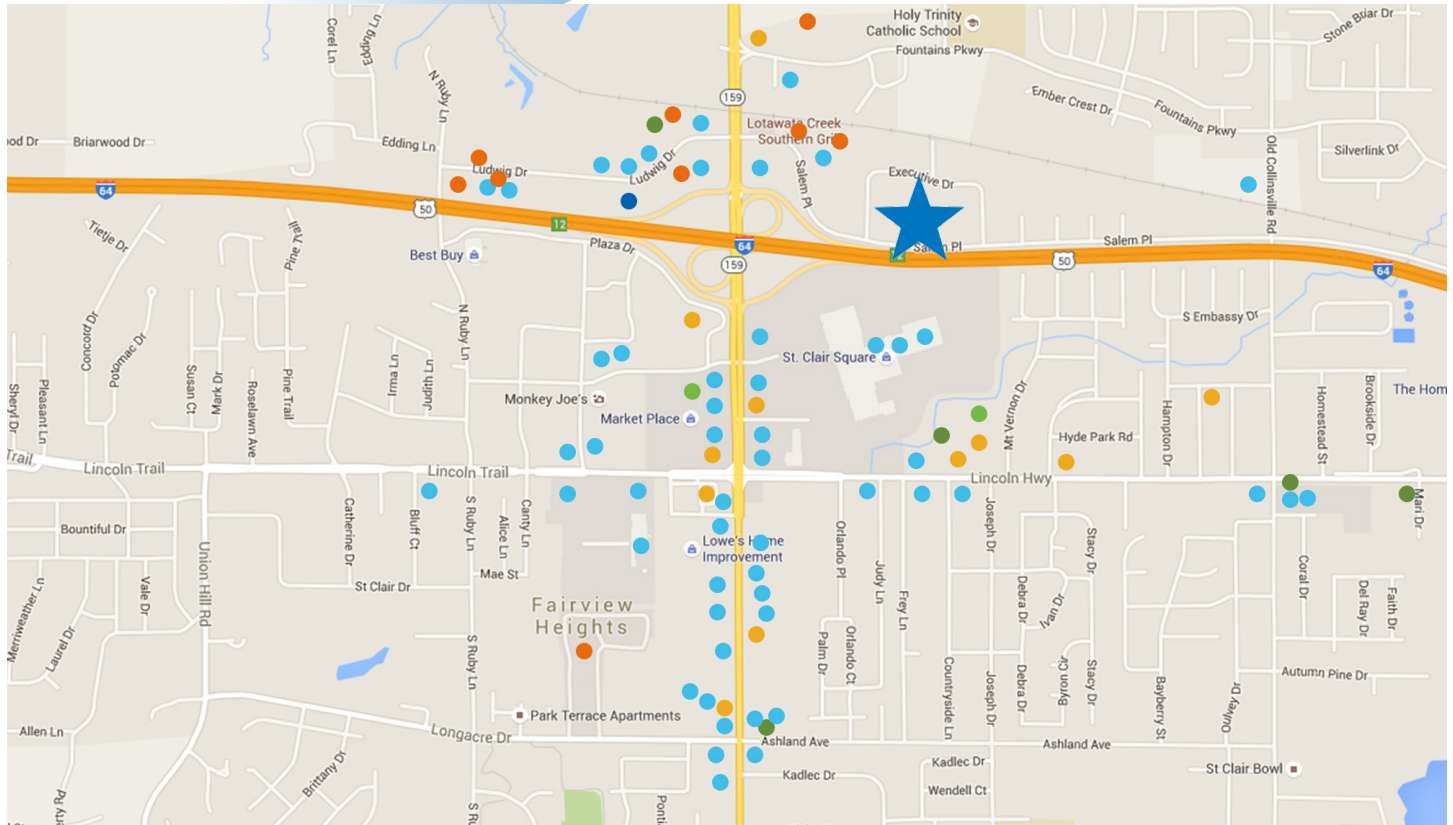
**ELLEN MANNION**  
314.880.0426  
emannion@balkebrown.com

**MICHAEL HOLLAND**  
618.520.9443  
mholland@balkebrown.com

OFFICE/MEDICAL FOR LEASE

# FAIRVIEW EXECUTIVE PLAZA II

331 SALEM PLACE - FAIRVIEW HEIGHTS, IL 62208 I-64 & RTE. 159



## AMENITIES MAP

### DINING

Lotawata Creek  
TGI Fridays  
Shogun Japanese  
Steakhouse  
Andria's Restaurant  
Houlihan's  
Bob Evans  
Olive Garden  
Applebee's  
Joe's Crab Shack  
Sbarro  
Panda Express  
Charley's Grilled Subs

Sarku Japan  
Gyro Gyro  
Cheddar's  
Taco Bell  
Ruby Tuesday  
Hooters  
Boston Market  
Wasabi Sushi Bar  
Red Robin  
White Castle  
Imo's Pizza  
Arby's  
Fortel's Pizza  
Lilly Steak & Grill  
China King

The Chuck Wagon  
Burger King  
Dandy Inn Irish Pub  
Penn Station  
Subway  
McAlister's Deli  
Long John Silver's  
Show-Me's Sports Bar  
Honey Baked Ham  
McDonald's  
Chipotle  
Steak n Shake  
Cayden's Diner  
ERJ Dining  
Smokey Bones

LongHorn Steakhouse  
Popeyes  
St. Louis Bread Co.  
Firehouse Subs  
Wing Street  
Pasta Fare  
Krispy Kreme  
Fazoli's  
Sushi Tatsu

### LODGING

Holiday Inn  
America's Best Value Inn  
Four Points by Sheraton  
Super 8

Drury Inn & Suites  
Fairfield Inn  
Comfort Suites  
Hampton Inn  
Marriott ExecuStay

### GROCERY & PHARMACY

Fresh Thyme  
Schnucks

### BANKING

Centrue Bank  
US Bank  
Associated Bank  
First Bank

HSBC Bank  
First Community Credit  
Union  
F&M Bank  
Commerce Bank  
Regions Bank

### FITNESS CENTERS

Planet Fitness  
Curves  
Club Fitness  
Dynamic Fitness

### ENTERTAINMENT

St. Clair 10 Cine



1001 Highlands Plaza Drive West, Suite 150  
St. Louis, MO 63110  
p: 314.621.1414 | www.balkebrown.com

## LEASING INFORMATION

**ELLEN MANNION**  
314.880.0426  
emannion@balkebrown.com

**MICHAEL HOLLAND**  
618.520.9443  
mholland@balkebrown.com

OFFICE FOR LEASE

# FAIRVIEW EXECUTIVE PLAZA III

8 EXECUTIVE DR - FAIRVIEW HEIGHTS, IL 62208 I-64 & RTE. 159



## PROPERTY DESCRIPTION

Strategically located in the Fairview Heights Office Park, Fairview Executive Plaza III is situated at the center of a premier business and dynamic growth area. Bordered by I-64 and Route 159, Fairview Heights Executive Plaza III is directly across from St. Clair Square Mall and offers high visibility, convenient access to all markets and close proximity to Downtown St. Louis (15 minutes), Scott Airforce Base/Mid America Airport (12 minutes) and Lambert St. Louis International Airport (30 minutes).

- 1,066 - 6,166 sf available
- Two-story Class A office building
- Building & Monument signage available
- Immediate access to I-64 & Route 159
- Dozens of restaurants and services within the immediate area
- Convenient to I-255, I-70, I-55 and Illinois Routes 157, 158, 159 and 143
- Full Service Lease Rate: \$21.90 psf



**BALKE BROWN**  
**T TRANSWESTERN®**

1001 Highlands Plaza Drive West, Suite 150  
St. Louis, MO 63110  
p: 314.621.1414 | [www.balkebrown.com](http://www.balkebrown.com)

## LEASING INFORMATION

**ELLEN MANNION**  
314.880.0426  
[emannion@balkebrown.com](mailto:emannion@balkebrown.com)

**MICHAEL HOLLAND**  
314.880.0425  
[mholland@balkebrown.com](mailto:mholland@balkebrown.com)

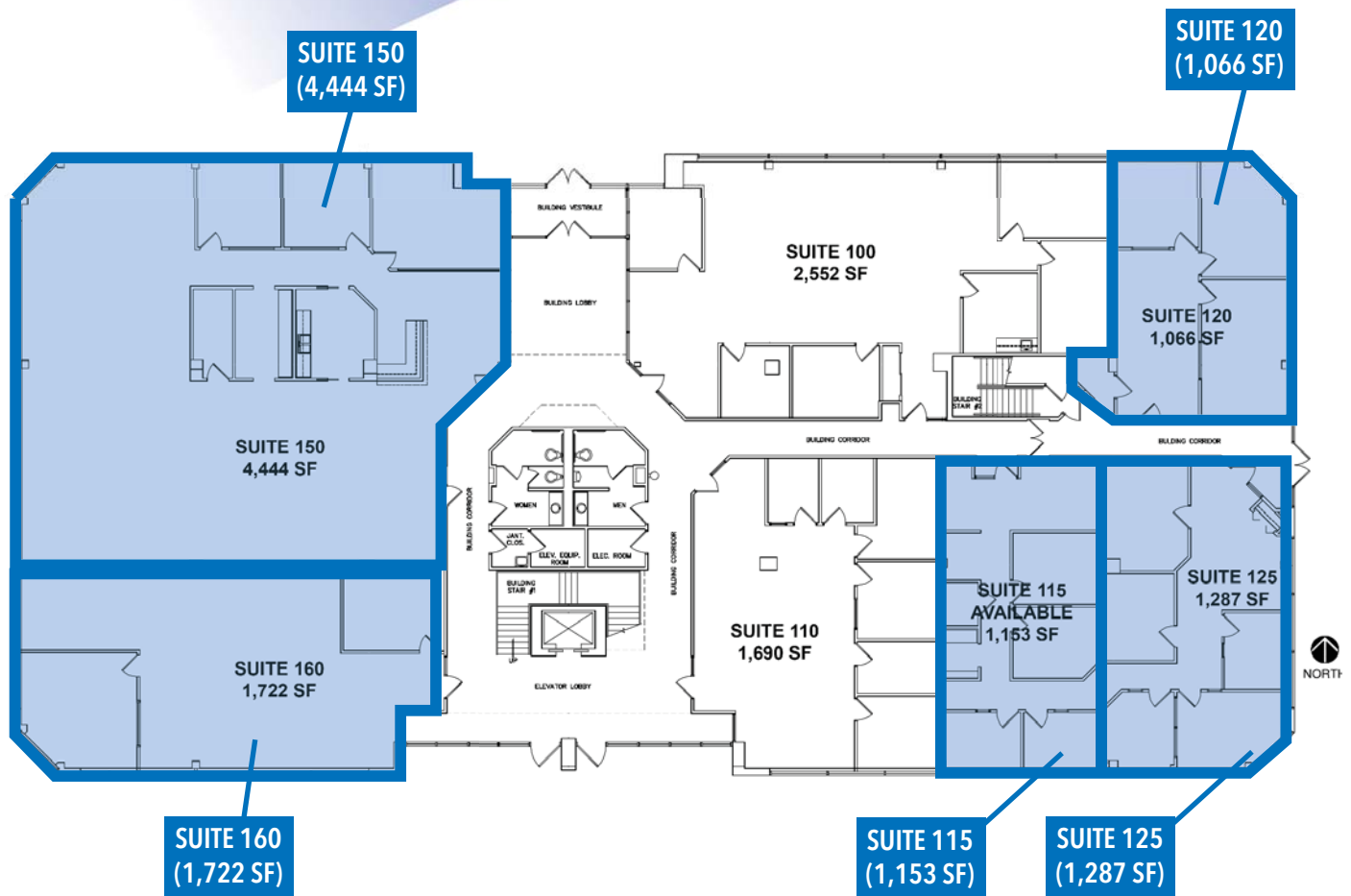
The information provided herein was obtained from sources believed reliable; however, Transwestern makes no guarantees, warranties or representations as to the completeness or accuracy thereof. The presentation of this property is submitted subject to errors, omissions, change of price or conditions, prior sale or lease, or withdrawal without notice. Copyright © 2015 Transwestern.



OFFICE FOR LEASE

# FAIRVIEW EXECUTIVE PLAZA III

8 EXECUTIVE DR - FAIRVIEW HEIGHTS, IL 62208 I-64 & RTE. 159



Suite 115 & 125 can be combined for 2,440 sf  
Suite 150 & 160 can be combined for 6,166 sf

1ST FLOOR

**BALKE BROWN**  
**TRANSWESTERN**<sup>®</sup>

1001 Highlands Plaza Drive West, Suite 150  
St. Louis, MO 63110  
p: 314.621.1414 | [www.balkebrown.com](http://www.balkebrown.com)

## LEASING INFORMATION

**ELLEN MANNION**  
314.880.0426  
[emannion@balkebrown.com](mailto:emannion@balkebrown.com)

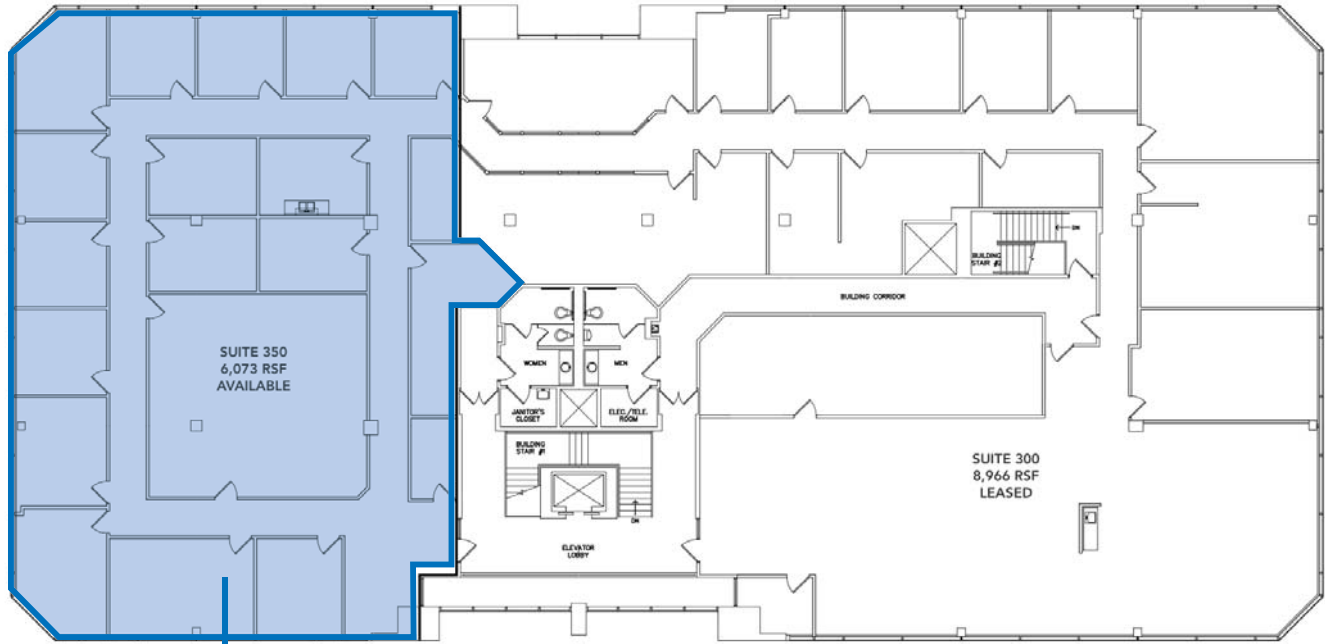
**MICHAEL HOLLAND**  
314.880.0425  
[mholland@balkebrown.com](mailto:mholland@balkebrown.com)

The information provided herein was obtained from sources believed reliable; however, Transwestern makes no guarantees, warranties or representations as to the completeness or accuracy thereof. The presentation of this property is submitted subject to errors, omissions, change of price or conditions, prior sale or lease, or withdrawal without notice. Copyright © 2015 Transwestern.

OFFICE FOR LEASE

# FAIRVIEW EXECUTIVE PLAZA III

8 EXECUTIVE DR - FAIRVIEW HEIGHTS, IL 62208 I-64 & RTE. 159



**SUITE 350**  
**(6,073 SF)**

**3RD FLOOR**

**BALKE BROWN**  
**TRANSWESTERN**<sup>®</sup>

1001 Highlands Plaza Drive West, Suite 150  
St. Louis, MO 63110  
p: 314.621.1414 | [www.balkebrown.com](http://www.balkebrown.com)

## LEASING INFORMATION

**ELLEN MANNION**  
314.880.0426  
[emannion@balkebrown.com](mailto:emannion@balkebrown.com)

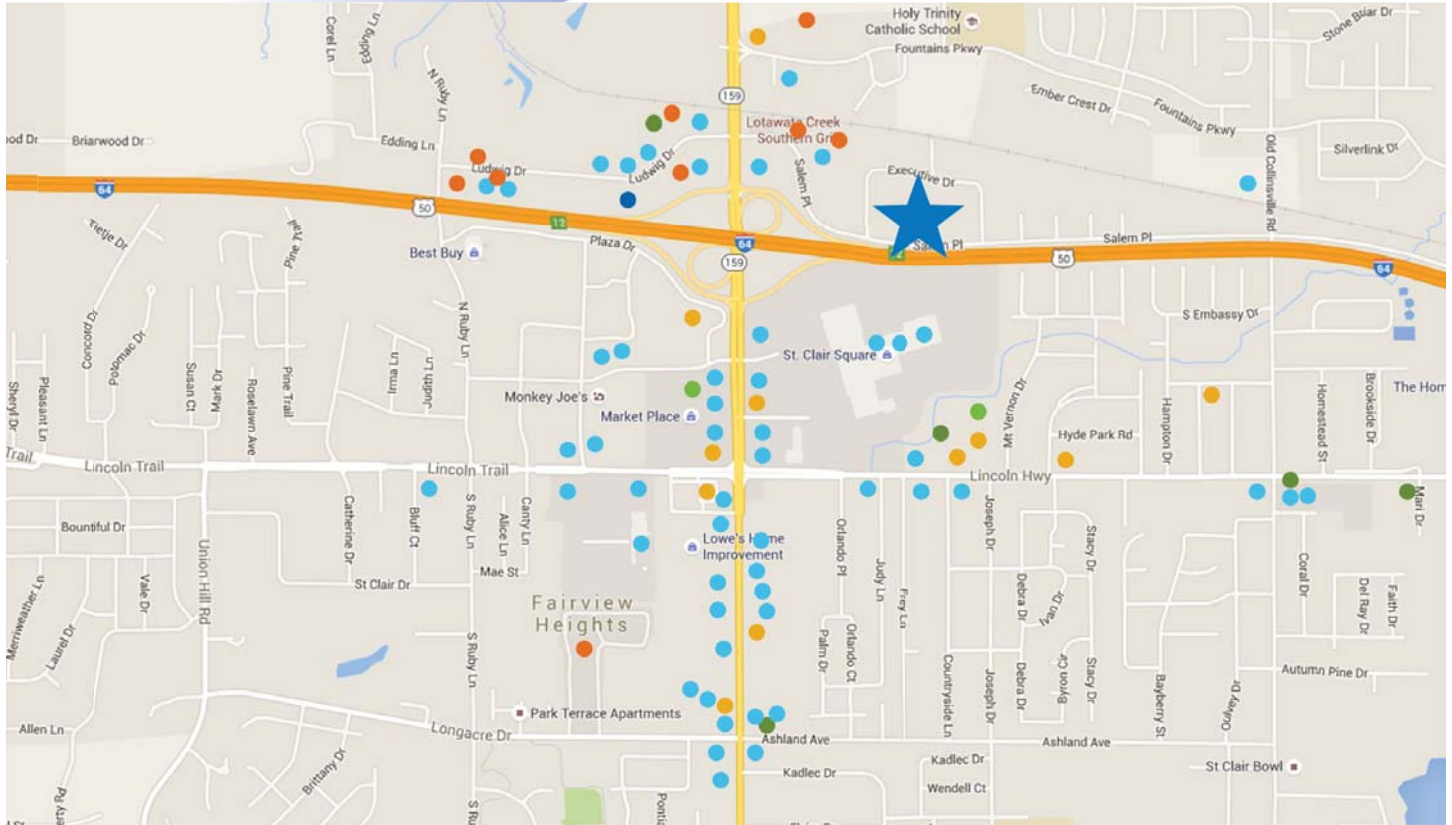
**MICHAEL HOLLAND**  
314.880.0425  
[mholland@balkebrown.com](mailto:mholland@balkebrown.com)

The information provided herein was obtained from sources believed reliable; however, Transwestern makes no guarantees, warranties or representations as to the completeness or accuracy thereof. The presentation of this property is submitted subject to errors, omissions, change of price or conditions, prior sale or lease, or withdrawal without notice. Copyright © 2015 Transwestern.

OFFICE FOR LEASE

# FAIRVIEW EXECUTIVE PLAZA III

8 EXECUTIVE DR - FAIRVIEW HEIGHTS, IL 62208 I-64 & RTE. 159



## AMENITIES MAP

### DINING

- Lotawata Creek
- TGI Fridays
- Shogun Japanese Steakhouse
- Andria's Restaurant
- Houlihan's
- Bob Evans
- Olive Garden
- Applebee's
- Joe's Crab Shack
- Sbarro
- Panda Express
- Charley's Grilled Subs

- Sarku Japan
- Gyro Gyro
- Cheddar's
- Taco Bell
- Ruby Tuesday
- Hooters
- Boston Market
- Wasabi Sushi Bar
- Red Robin
- White Castle
- Imo's Pizza
- Arby's
- Fortel's Pizza
- Lilly Steak & Grill
- China King

- The Chuck Wagon
- Burger King
- Dandy Inn Irish Pub
- Penn Station
- Subway
- McAlister's Deli
- Long John Silver's
- Show-Me's Sports Bar
- Honey Baked Ham
- McDonald's
- Chipotle
- Steak n Shake
- Cayden's Diner
- ERJ Dining
- Smokey Bones

- LongHorn Steakhouse
- Popeyes
- St. Louis Bread Co.
- Firehouse Subs
- Wing Street
- Pasta Fare
- Krispy Kreme
- Fazoli's
- Sushi Tatsu

### LODGING

- Holiday Inn
- America's Best Value Inn
- Four Points by Sheraton
- Super 8

- Drury Inn & Suites
- Fairfield Inn
- Comfort Suites
- Hampton Inn
- Marriott ExecuStay

### GROCERY & PHARMACY

- Fresh Thyme
- Schnucks

### BANKING

- Centrue Bank
- US Bank
- Associated Bank
- First Bank

- HSBC Bank
- First Community Credit Union
- F&M Bank
- Commerce Bank
- Regions Bank

### FITNESS CENTERS

- Planet Fitness
- Curves
- Club Fitness
- Dynamic Fitness

### ENTERTAINMENT

- St. Clair 10 Cine



1001 Highlands Plaza Drive West, Suite 150  
 St. Louis, MO 63110  
 p: 314.621.1414 | www.balkebrown.com

## LEASING INFORMATION

**ELLEN MANNION**  
 314.880.0426  
 emannion@balkebrown.com

**MICHAEL HOLLAND**  
 314.880.0425  
 mholland@balkebrown.com

The information provided herein was obtained from sources believed reliable; however, Transwestern makes no guarantees, warranties or representations as to the completeness or accuracy thereof. The presentation of this property is submitted subject to errors, omissions, change of price or conditions, prior sale or lease, or withdrawal without notice. Copyright © 2015 Transwestern.

OFFICE FOR LEASE

# CORPORATE CENTER II

16 EXECUTIVE DR - FAIRVIEW HEIGHTS, IL 62208 I-64 & RTE. 159



## PROPERTY DESCRIPTION

Strategically located in the Fairview Heights Office Park, Corporate Center II is situated at the center of a premier business and dynamic growth area.

Bordered by I-64 and Route 159, Corporate Center II is directly across from St. Clair Square Mall and offers high visibility, convenient access to all markets and close proximity to Downtown St. Louis (15 minutes), Scott Airforce Base/Mid America Airport (12 minutes) and Lambert St. Louis International Airport (30 minutes).

- 2,984 - 9,482 sf available
- Three-story Class A office building
- Monument signage available
- Immediate access to I-64 & Route 159
- Dozens of restaurants and services within the immediate area
- Convenient to I-255, I-70, I-55 and Illinois Routes 157, 158, 159 and 143
- Full Service Lease Rate: \$24.50 psf



**BALKE BROWN**  
**T TRANSWESTERN®**

1001 Highlands Plaza Drive West, Suite 150  
St. Louis, MO 63110  
p: 314.621.1414 | [www.balkebrown.com](http://www.balkebrown.com)

## LEASING INFORMATION

**ELLEN MANNION**  
314.880.0426  
[emannion@balkebrown.com](mailto:emannion@balkebrown.com)

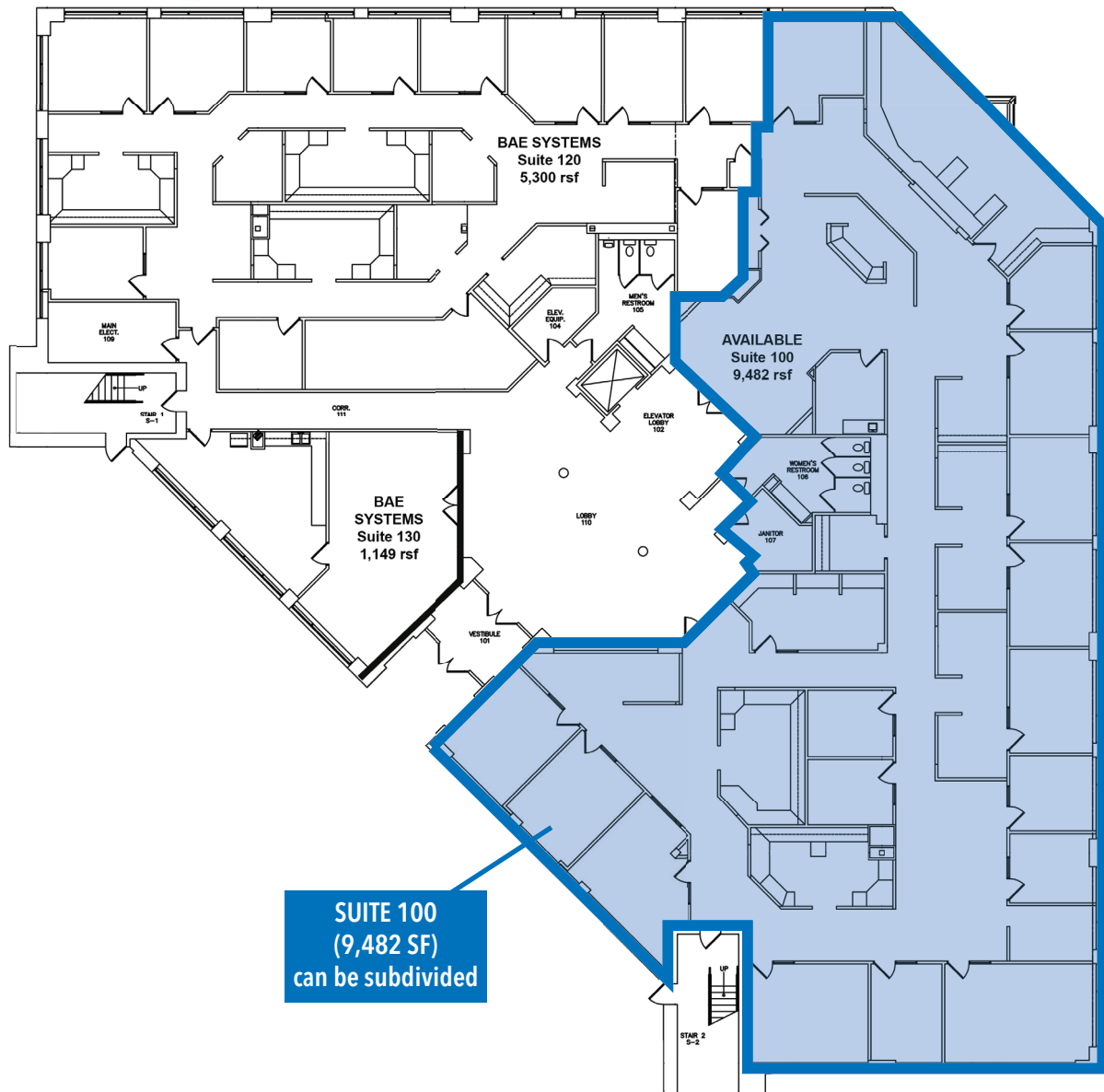
**MICHAEL HOLLAND**  
314.880.0425  
[mholland@balkebrown.com](mailto:mholland@balkebrown.com)

The information provided herein was obtained from sources believed reliable; however, Transwestern makes no guarantees, warranties or representations as to the completeness or accuracy thereof. The presentation of this property is submitted subject to errors, omissions, change of price or conditions, prior sale or lease, or withdrawal without notice. Copyright © 2015 Transwestern.

OFFICE FOR LEASE

# CORPORATE CENTER II

16 EXECUTIVE DR - FAIRVIEW HEIGHTS, IL 62208 I-64 & RTE. 159



1ST FLOOR



1001 Highlands Plaza Drive West, Suite 150  
St. Louis, MO 63110  
p: 314.621.1414 | www.balkebrown.com

## LEASING INFORMATION

**ELLEN MANNION**  
314.880.0426  
emannion@balkebrown.com

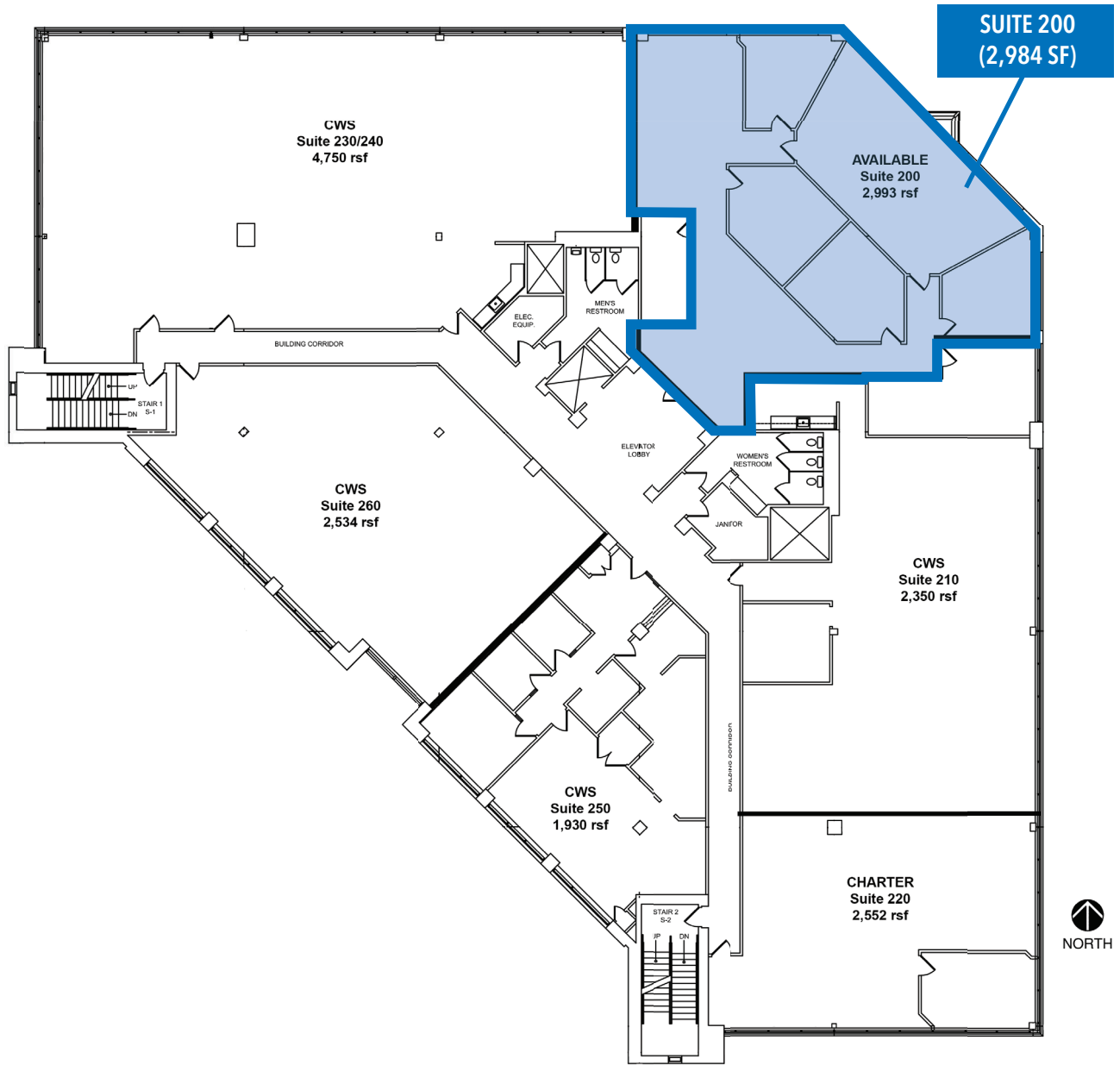
**MICHAEL HOLLAND**  
314.880.0425  
mholland@balkebrown.com

The information provided herein was obtained from sources believed reliable; however, Transwestern makes no guarantees, warranties or representations as to the completeness or accuracy thereof. The presentation of this property is submitted subject to errors, omissions, change of price or conditions, prior sale or lease, or withdrawal without notice. Copyright © 2015 Transwestern.

OFFICE FOR LEASE

# CORPORATE CENTER II

16 EXECUTIVE DR - FAIRVIEW HEIGHTS, IL 62208 I-64 & RTE. 159



## 2ND FLOOR



1001 Highlands Plaza Drive West, Suite 150  
St. Louis, MO 63110  
p: 314.621.1414 | www.balkebrown.com

### LEASING INFORMATION

**ELLEN MANNION**  
314.880.0426  
emannion@balkebrown.com

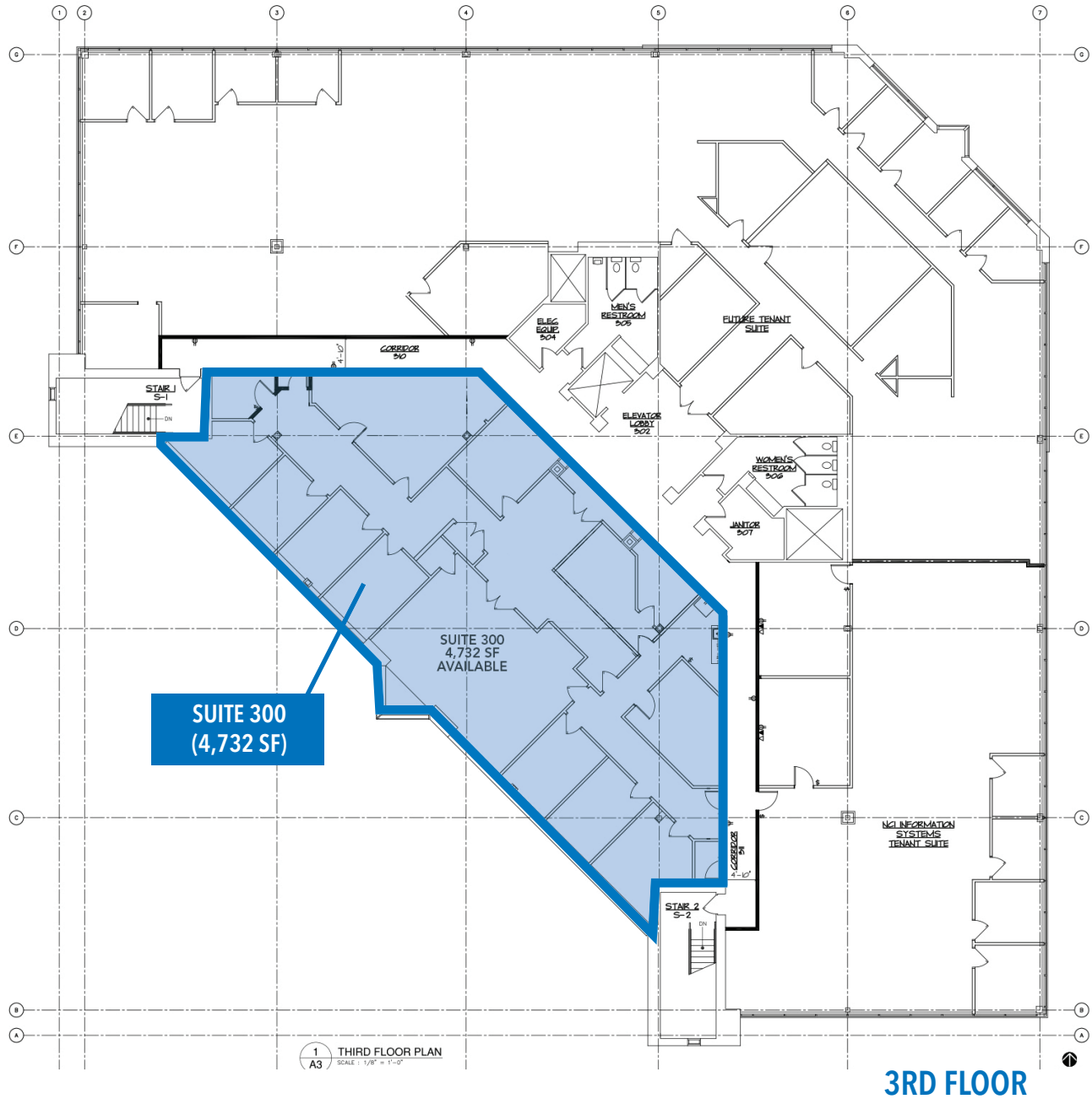
**MICHAEL HOLLAND**  
314.880.0425  
mholland@balkebrown.com

The information provided herein was obtained from sources believed reliable; however, Transwestern makes no guarantees, warranties or representations as to the completeness or accuracy thereof. The presentation of this property is submitted subject to errors, omissions, change of price or conditions, prior sale or lease, or withdrawal without notice. Copyright © 2015 Transwestern.

OFFICE FOR LEASE

# CORPORATE CENTER II

16 EXECUTIVE DR - FAIRVIEW HEIGHTS, IL 62208 I-64 & RTE. 159



1001 Highlands Plaza Drive West, Suite 150  
St. Louis, MO 63110  
p: 314.621.1414 | www.balkebrown.com

## LEASING INFORMATION

**ELLEN MANNION**  
314.880.0426  
emannion@balkebrown.com

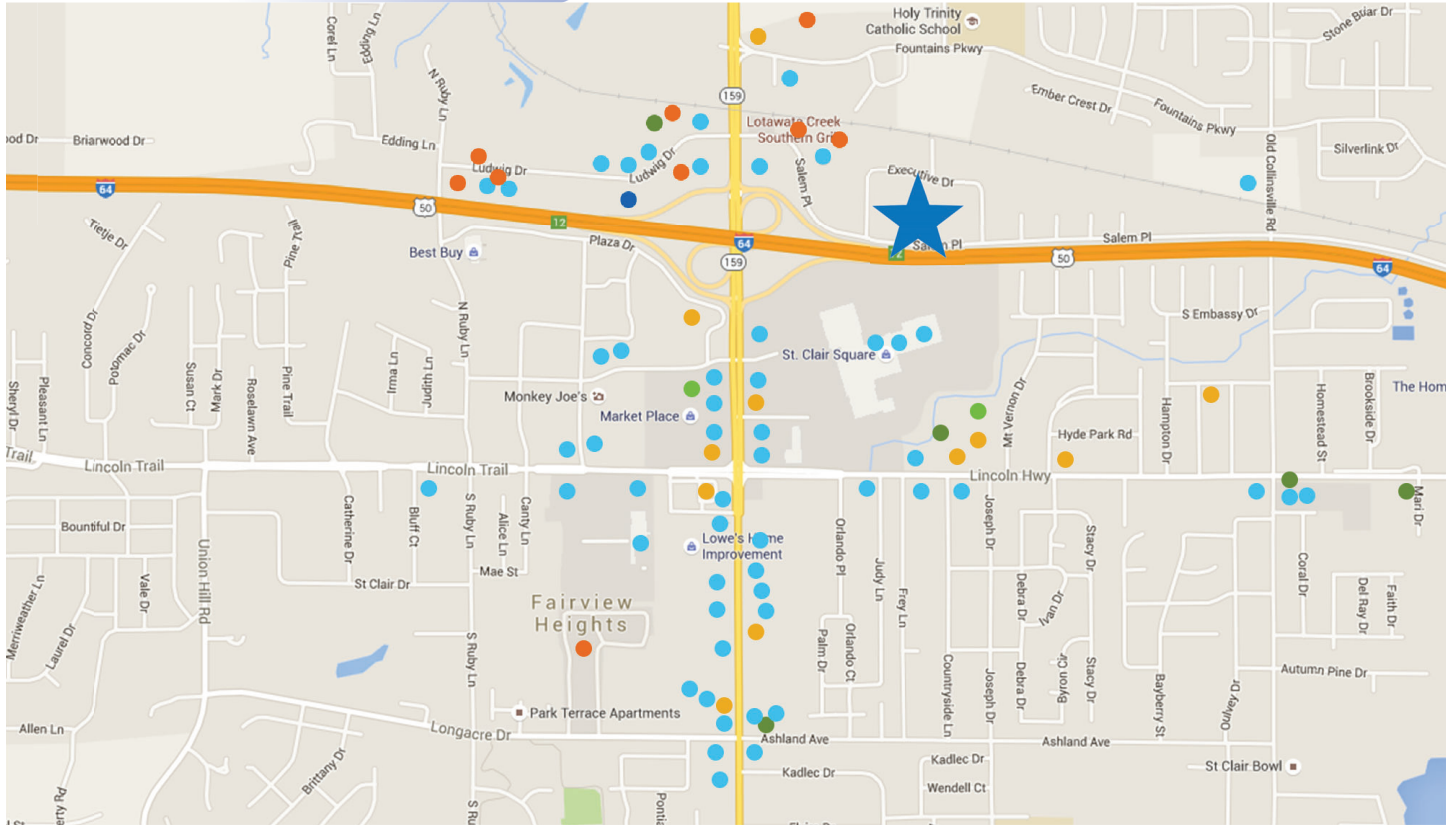
**MICHAEL HOLLAND**  
314.880.0425  
mholland@balkebrown.com

The information provided herein was obtained from sources believed reliable; however, Transwestern makes no guarantees, warranties or representations as to the completeness or accuracy thereof. The presentation of this property is submitted subject to errors, omissions, change of price or conditions, prior sale or lease, or withdrawal without notice. Copyright © 2015 Transwestern.

OFFICE FOR LEASE

# CORPORATE CENTER II

16 EXECUTIVE DR - FAIRVIEW HEIGHTS, IL 62208 I-64 & RTE. 159



## AMENITIES MAP

### DINING

- Lotawata Creek
- TGI Fridays
- Shogun Japanese Steakhouse
- Andria's Restaurant
- Houlihan's
- Bob Evans
- Olive Garden
- Applebee's
- Joe's Crab Shack
- Sbarro
- Panda Express
- Charley's Grilled Subs

- Sarku Japan
- Gyro Gyro
- Cheddar's
- Taco Bell
- Ruby Tuesday
- Hooters
- Boston Market
- Wasabi Sushi Bar
- Red Robin
- White Castle
- Imo's Pizza
- Arby's
- Fortel's Pizza
- Lilly Steak & Grill
- China King

- The Chuck Wagon
- Burger King
- Dandy Inn Irish Pub
- Penn Station
- Subway
- McAlister's Deli
- Long John Silver's
- Show-Me's Sports Bar
- Honey Baked Ham
- McDonald's
- Chipotle
- Steak n Shake
- Cayden's Diner
- ERJ Dining
- Smokey Bones

- LongHorn Steakhouse
- Popeyes
- St. Louis Bread Co.
- Firehouse Subs
- Wing Street
- Pasta Fare
- Krispy Kreme
- Fazoli's
- Sushi Tatsu

### LODGING

- Holiday Inn
- America's Best Value Inn
- Four Points by Sheraton
- Super 8

- Drury Inn & Suites
- Fairfield Inn
- Comfort Suites
- Hampton Inn
- Marriott ExecuStay

### GROCERY & PHARMACY

- Fresh Thyme
- Schnucks

### BANKING

- Centrue Bank
- US Bank
- Associated Bank
- First Bank

- HSBC Bank
- First Community Credit Union
- F&M Bank
- Commerce Bank
- Regions Bank

### FITNESS CENTERS

- Planet Fitness
- Curves
- Club Fitness
- Dynamic Fitness

### ENTERTAINMENT

- St. Clair 10 Cine



1001 Highlands Plaza Drive West, Suite 150  
 St. Louis, MO 63110  
 p: 314.621.1414 | www.balkebrown.com

## LEASING INFORMATION

**ELLEN MANNION**  
 314.880.0426  
 emannion@balkebrown.com

**MICHAEL HOLLAND**  
 314.880.0425  
 mholland@balkebrown.com