



222 Rue de Jean Lafayette, Louisiana

Professional Office Space Available



- Approximately 4,059 square feet available
- Easy access parking
- Fiber optics available
- Triple Net lease
- Professionally managed

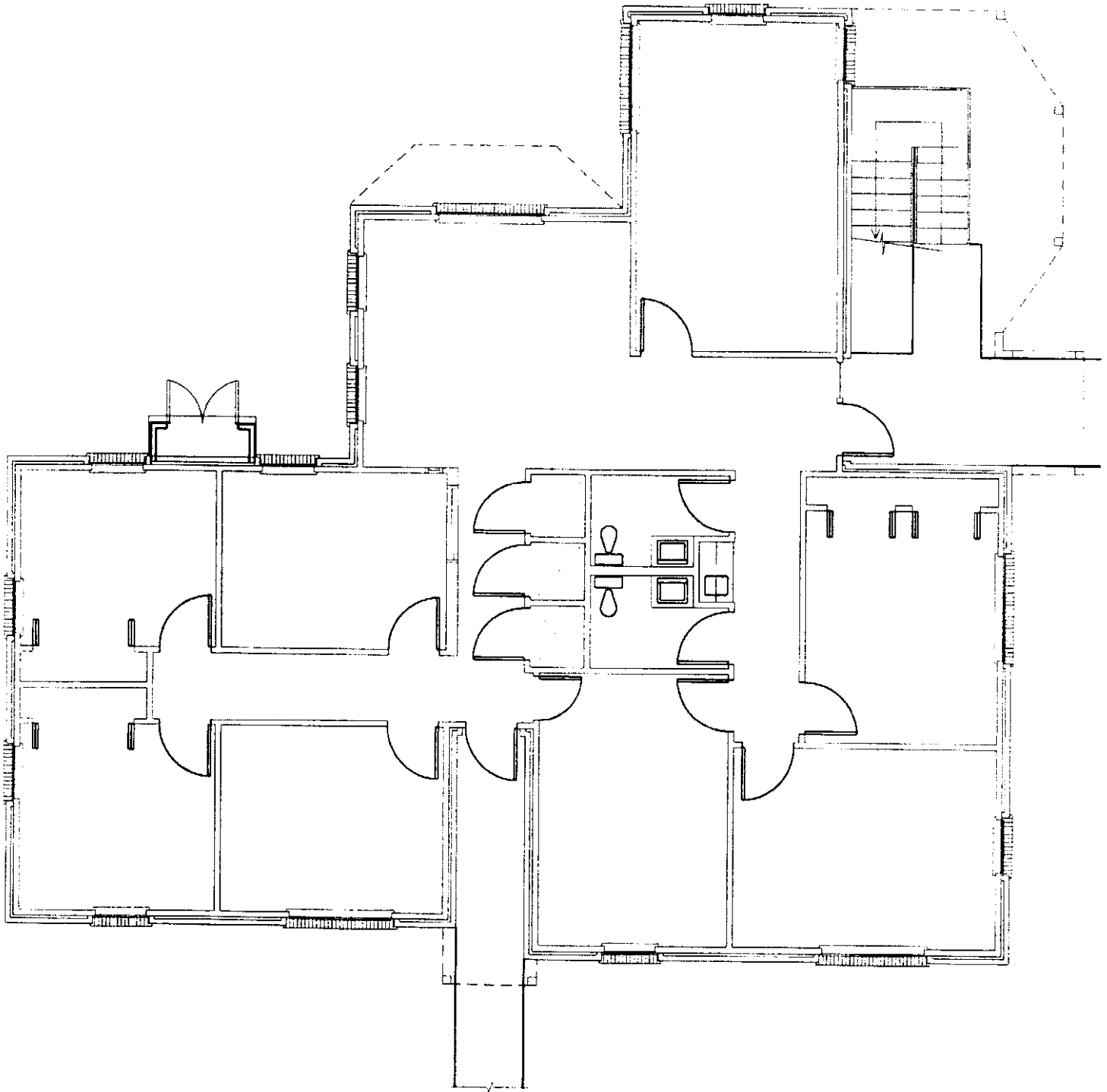
- Minutes from Lafayette Regional Airport
- Convenient location near the W. Pinhook and Kaliste Saloom corridor
- Abundant retail, restaurants and other services nearby



**For more information, please contact
Michael L. Matherne
(337) 593-0444 / mmatherne@championllc.com**

100 Rue Iberville, Suite 200, Lafayette, Louisiana 70508 • (337) 593-0444 office • (337) 593-0062 fax • championllc.com


No warranty or representation is made as to the accuracy or completeness of the information stated above.

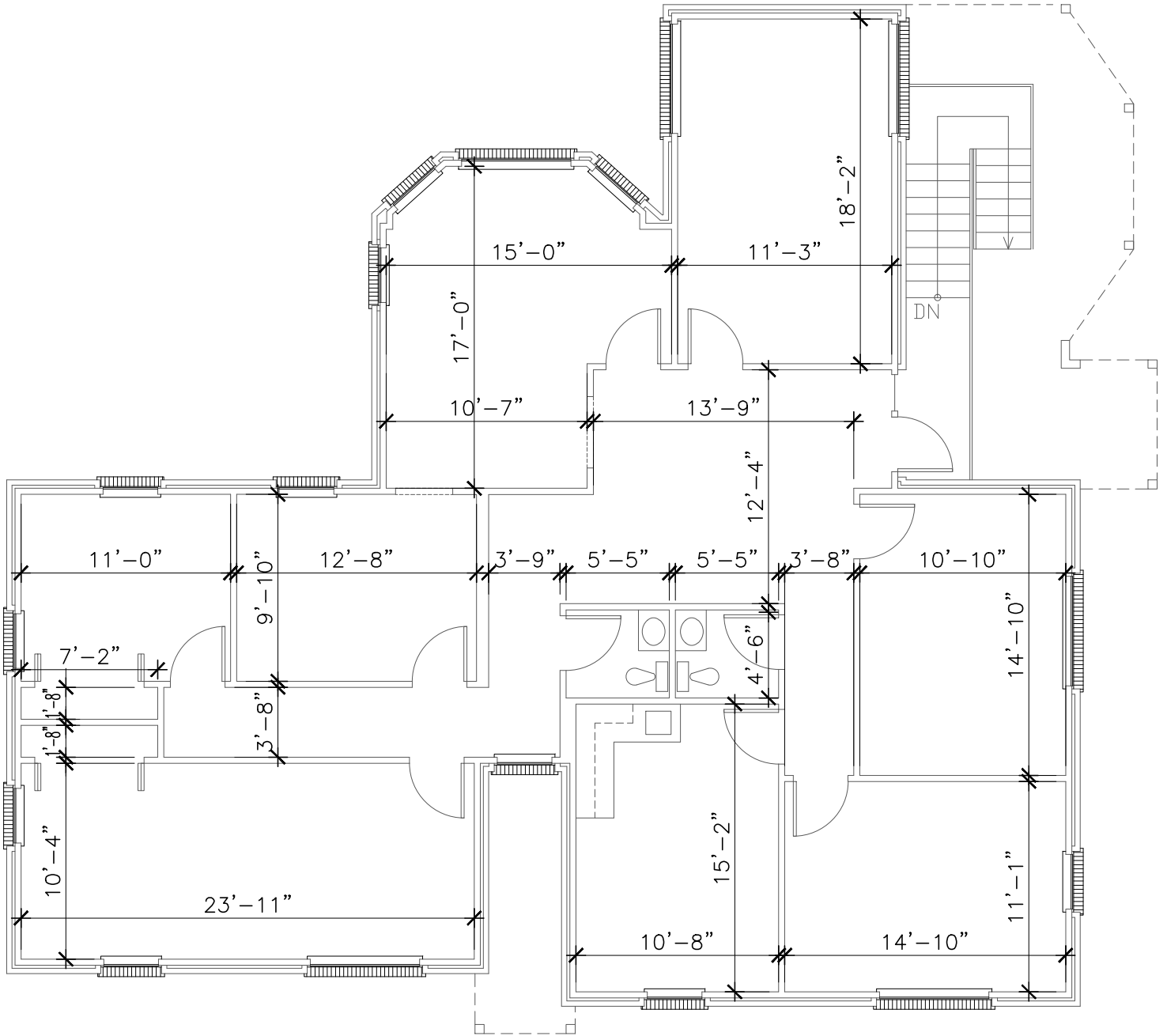


APPROXIMATELY
2,009 S.F.



FIRST FLOOR PLAN

 <p>ZILBER ARCHITECTS A PROFESSIONAL ARCHITECTURAL CORPORATION 191 CALICO BLVD LAFAYETTE, LOUISIANA 70508 337 289 4300 FAX 289 4302</p>	<p>RECORD DRAWINGS FOR:</p> <p>222 RUE DE JEAN</p> <hr/> <p>222 RUE DE JEAN LAFAYETTE, LOUISIANA</p>		<p>DATE ISSUED 11-28-06</p>	<p>SHEET NO A2.1</p>
	<p>PROJECT NO. 2614</p>		<p>OF <u>2</u></p>	

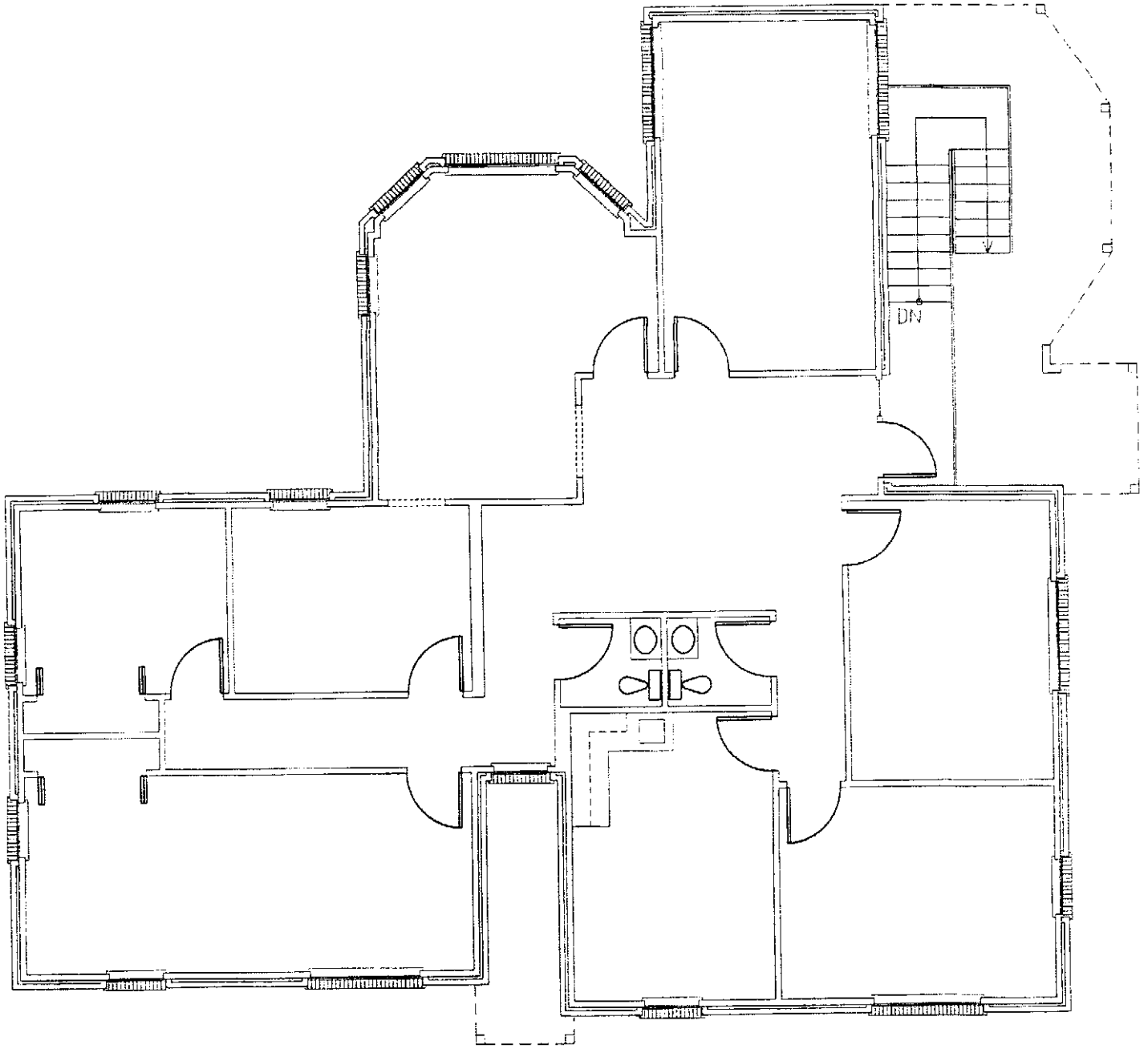


APPROXIMATELY
2,050 S.F.



SECOND FLOOR PLAN


 <p>ZILBER ARCHITECTS A PROFESSIONAL ARCHITECTURAL CORPORATION 101 CALCO BLVD LAFAYETTE, LOUISIANA 70503 337 269 6326 FAX 269 6380</p>	<p>RECORD DRAWINGS FOR:</p> <p>222 RUE DE JEAN</p> <p>222 RUE DE JEAN LAFAYETTE, LOUISIANA</p>	<p>DATE ISSUED 6-8-12</p> <p>PROJECT NO. 1202</p>	<p>SHEET NO. A2.2</p> <p>OF <u>1</u></p>
---	---	---	---



APPROXIMATELY
2,050 S.F.

0 1/8" 8'

SECOND FLOOR PLAN

 <p>ZILER ARCHITECTS A PROFESSIONAL ARCHITECTURAL CORPORATION 191 CALO BLVD LAFAYETTE, LOUISIANA 70503 337.282.0336 FAX 337.281.6247</p>	<p>RECORD DRAWINGS FOR:</p> <p>222 RUE DE JEAN</p> <hr/> <p>222 RUE DE JEAN LAFAYETTE, LOUISIANA</p>	<p>DATE ISSUED 11-28-06</p> <p>PROJECT NO. 2614</p> <p>SHEET NO. A2.2</p> <p>OF <u>2</u></p>
--	---	---