



I. MAGNIN & CO

## 2001 Broadway

Spark Innovation  
at Uptown's Boldest  
Art Deco Office Building

CLICK HERE FOR



**Charles F. Allen, LEED AP**  
Principal, Managing Director  
RE Lic #01158267  
charlie.allen@avisonyoung.com  
510.254.4260

**Anthony Shell, LEED® AP**  
Principal  
RE Lic #01743033  
anthony.shell@avisonyoung.com  
510.254.4263

**Amber Merrigan**  
Vice President  
RE Lic #01905162  
amber.merrigan@avisonyoung.com  
510.254.4267

**David Goldberg**  
Associate  
RE Lic #02079131  
david.goldberg@avisonyoung.com  
510.254.4259

**HP INVESTORS**

Avison Young, Inc.  
1111 Broadway Suite 1650  
Oakland, CA 94607



## Re-Opening 2001 Broadway:

In a response to COVID-19, 2001 Broadway has enhanced our operations with tenant & visitors wellbeing being our #1 priority, by focusing on physical distancing, safety and increased sanitation and janitorial procedures. Here are a few highlights:

### THE BUILDING:

- Lobby security will be monitoring individuals entering/exiting the building.
- Front doors propped open (when possible) to minimize contact.
- Face coverings required upon entry to the building, and are to be worn in common areas.
- Signage placed throughout common areas to emphasize social distancing & sanitations measures.

### CLEANING & SANITATION:

- Building janitorial has continued during the Shelter in Place order.
- Damp dusting replaced by disinfectant dusting and cleaning of all high-touch services in common areas.
- Cleaning practices/cleaning chemicals used based on CDC/WHO recommendations.
- All building personnel to wear PPE while cleaning.

### SOCIAL DISTANCING:

- Common area adjustments to ensure business continuity with social distancing.
- Limit two riders per elevator ride.
- New signage throughout lobby/common areas to promote social distancing measures.





### BUILDING FEATURES & UPGRADES

- Exclusive full floor identity with private restrooms
- Suite access via stairwells, or elevators
- Efficient side-core building
- Concrete construction with exposed/high ceilings
- Modernized building lobby
- Direct access to neighboring parking lots & 19th Street BART
- On-site bike storage & security
- Adjacent to Square's new expansion at Uptown Station
- Applied Carbon Lighthouse project, used to regulate and improve energy efficiency
- Energy-saving LED light fixtures



Wheelchair Accessible



On-Site Security



BART Accessible



Bike Storage



Walk Score™ 91



Low Touch Access



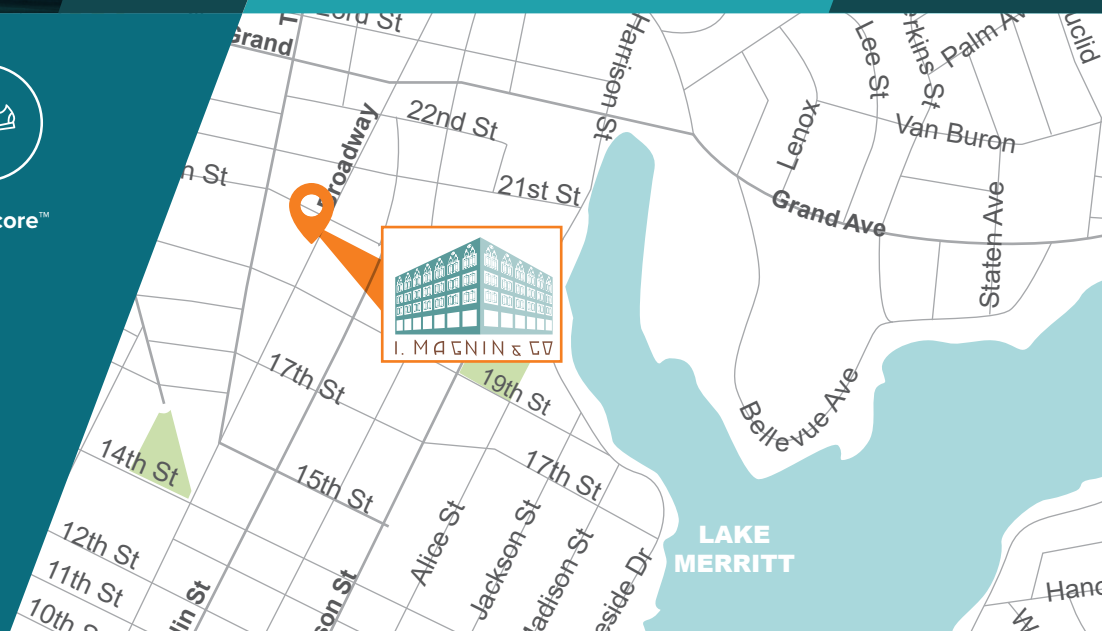
Showers On Site



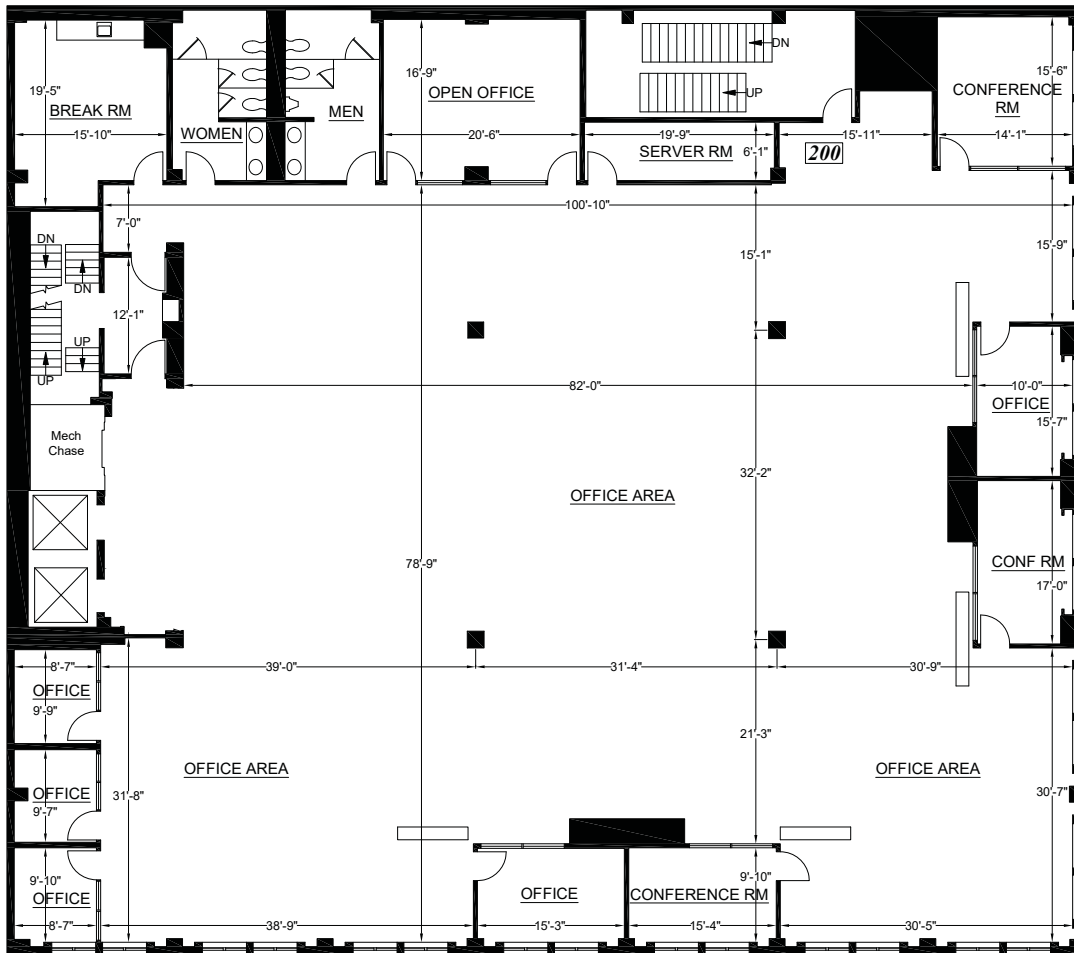
Fiber Optic Enabled



Oakland Intl. Airport 25 min. Drive







**NEW AVAILABILITY**

- 2nd Floor, 12,144 RSF
- Available NOW

CLICK HERE FOR



**Charles F. Allen, LEED AP**  
Principal, Managing Director  
RE Lic #01158267  
charlie.allen@avisonyoung.com  
510.254.4260

**Anthony Shell, LEED® AP**  
Principal  
RE Lic #01743033  
anthony.shell@avisonyoung.com  
510.254.4263

**Amber Merrigan**  
Vice President  
RE Lic #01905162  
amber.merrigan@avisonyoung.com  
510.254.4267

**David Goldberg**  
Associate  
RE Lic #02079131  
david.goldberg@avisonyoung.com  
510.254.4259



**AMENITIES**

**Uptown Icons & Entertainment**

- 1 Fox Theater
- 2 Paramount Theater
- 3 Kaiser Center Public Garden
- 4 Snow Park
- 5 Emporium Oakland

**Bars**

- 6 Drexl
- 7 Dogwood
- 8 Make Westing
- 9 Woods Bar
- 10 Mad Oak
- 11 Layover
- 12 Luka's Taproom & Lounge
- 13 Mau
- 14 Here's How
- 15 Bar Shiru
- 16 Hello Stranger
- 17 The Miranda
- 18 The Athletic Club
- 19 19th Street Station
- 20 Bar 355

**Restaurants & Lunch Bites**

- 21 Drake's Brewery
- 22 Flora

**Restaurants & Lunch Bites**

- 23 Duende
- 24 Parlour
- 25 Ike's Place
- 26 Izzy's Steaks and Chops
- 27 The Gastropig
- 28 Mockingbird
- 29 Dosa by Dosa
- 30 Mixt
- 31 Brown Sugar Kitchen
- 32 Falafel Boy
- 33 Burma Bear
- 34 Pho 84
- 35 Aburaya Japanese
- 36 Liba Falafel
- 37 The Lunch Box
- 38 Lotus Falafel & Shawerma
- 39 Genji Japanese
- 40 Molcajete Cocina

**Coffee**

- 41 Modern Coffee
- 42 Aroma Café
- 43 Awaken Café
- 44 City Lights Cafe
- 45 Starbucks



**Charles F. Allen, LEED AP**  
 Principal, Managing Director  
 RE Lic #01158267  
 charlie.allen@avisonyoung.com  
 510.254.4260

**Anthony Shell, LEED® AP**  
 Principal  
 RE Lic #01743033  
 anthony.shell@avisonyoung.com  
 510.254.4263

**Amber Merrigan**  
 Vice President  
 RE Lic #01905162  
 amber.merrigan@avisonyoung.com  
 510.254.4267

**David Goldberg**  
 Associate  
 RE Lic #02079131  
 david.goldberg@avisonyoung.com  
 510.254.4259

