

Boyd Market Center

2800 SW 24th Avenue
Ocala, FL 34471
Lat 29.161, Long -82.164

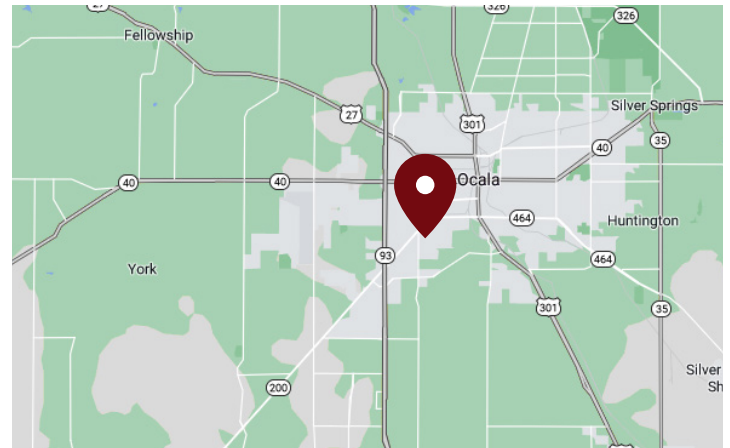
FOR LEASE



3,200 SF AVAILABLE

PROPERTY HIGHLIGHTS

- Located in the Heart of Ocala's Retail Corridor Off Interstate 75
- Across 27th Avenue from the Paddock Mall
- Retail Neighbors Include: Super Walmart, Macy's, JC Penny, Regal Cinemas Hollywood16 & IMAX, Best Buy, and Many More
- Anchored by Planet Fitness and Shoe Carnival
- Multiple Points of Entry
- Traffic Count: 22,600 VPD



DEMOGRAPHICS	1 Mile	3 Miles	5 Miles
Total Population	4,885	34,797	75,463
Daytime Population	10,179	57,168	102,431
Total Households	2,122	13,709	30,795
Avg. HH Income	\$58,839	\$63,433	\$68,701

Data provided by Placer Labs Inc. (www.placer.ai) & Esri

Rochelle DuBrule

407.581.6248 | rdubrue@crossmanco.com
3333 South Orange Avenue, Suite 201, Orlando, FL

Licensed Real Estate Broker. No warranty expressed or implied has been made to the accuracy of the information provided herein, no liability assumed for error or omission.



www.crossmanco.com

Boyd Market Center

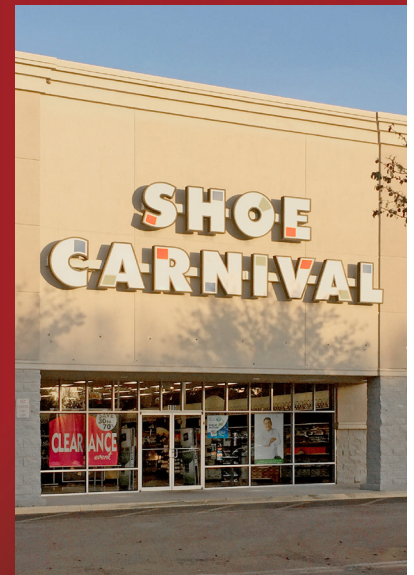
2800 SW 24th Avenue
 Ocala, FL 34471
 Lat 29.161, Long -82.164



SITE PLAN

Suite	Tenant	Size
Boyd Market Center		
101-102	AVAILABLE	3,200
103	Scrub Paradise	1,600
104	One Main Financial	1,600
105	Shoe Carnival	12,000
200	Conn's Home Plus	34,066
300	Planet Fitness	23,800
401-406	CSL Plasma	9,600
407	Avalon Nails and Spa	1,600
408	Gamestop	1,600
Shoppe's I at Boyd Market Center		
101	J-Rocks Pizzeria	2,400
102	Boost Mobile	1,200
103	J-Tax/Orlando	1,200
Shoppe's II at Boyd Market Center		
100	The Juicy Crab	5,400
101	Moe's Southwest Grill	2,800

TOTAL 102,066



Rochelle DuBrule

407.581.6248 | rdubrue@crossmanco.com
 3333 South Orange Avenue, Suite 201, Orlando, FL

Licensed Real Estate Broker. No warranty expressed or implied has been made to the accuracy of the information provided herein, no liability assumed for error or omission.



Crossman & Company
www.crossmanco.com

Boyd Market Center

2800 SW 24th Avenue
Ocala, FL 34471
Lat 29.161, Long -82.164

FOOT TRAFFIC OVERVIEW

EST. # OF CUSTOMERS ANNUALLY



EST. # OF VISITS ANNUALLY



AVG. VISITS / CUSTOMER



AVG. LENGTH-OF-STAY / VISIT



TOP 3 DAYS



Saturday	555,376
Friday	506,570
Sunday	460,658

OF VISITS

TOP 3 HOURS

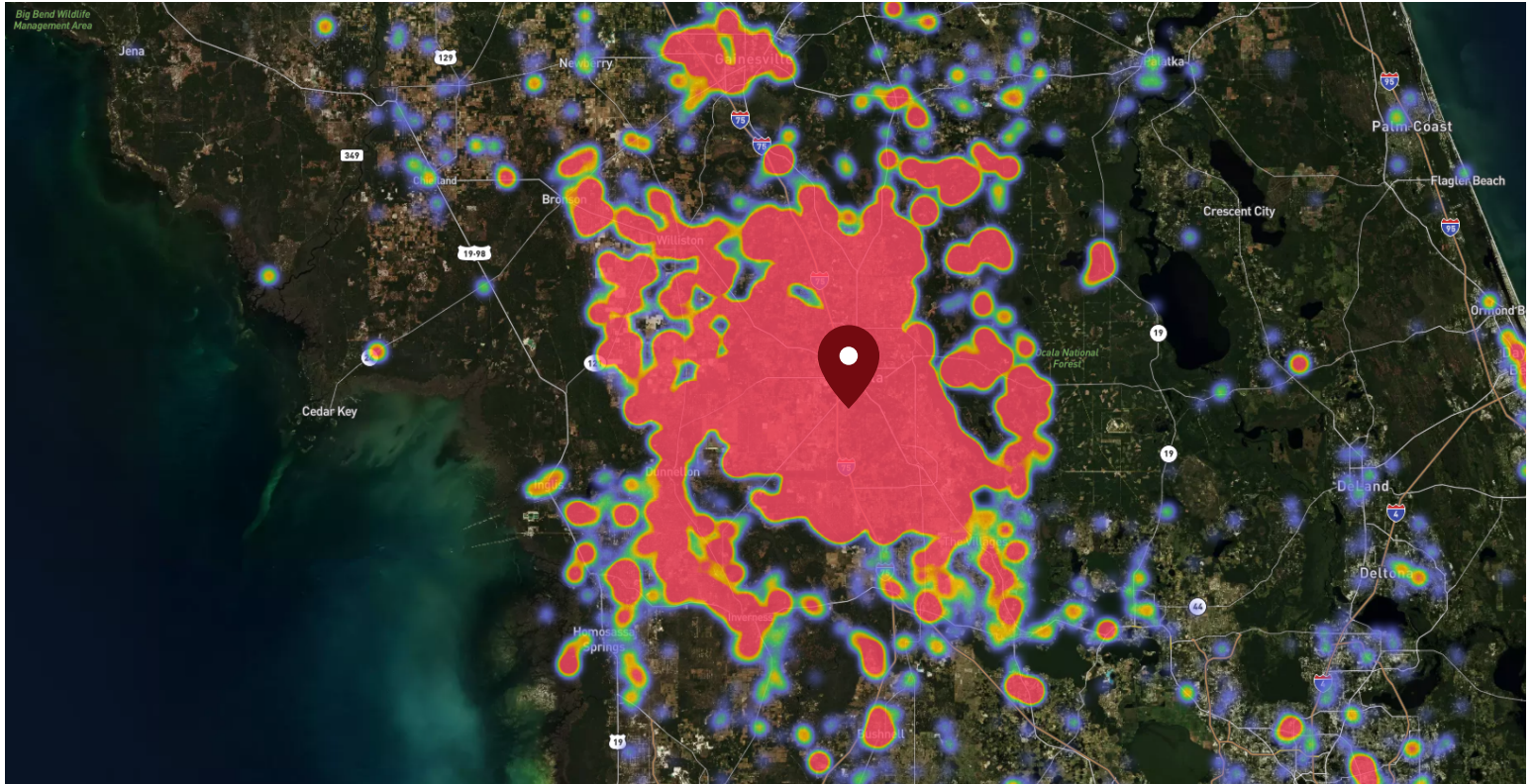


4-5 PM	520,476
5-6 PM	519,345
3-4 PM	511,220

OF VISITS

Data provided by Placer Labs Inc. (www.placer.ai) Month 0, 2000 - Month 0, 2000

SITE VISIT DENSITY



Red, orange, and yellow colors represent the location of 60% of site visitors

Data provided by Placer Labs Inc. (www.placer.ai)

Rochelle DuBrule

407.581.6248 | rdubrue@crossmanco.com

3333 South Orange Avenue, Suite 201, Orlando, FL

Licensed Real Estate Broker. No warranty expressed or implied has been made to the accuracy of the information provided herein, no liability assumed for error or omission.



Crossman & Company

www.crossmanco.com

Boyd Market Center

2800 SW 24th Avenue
 Ocala, FL 34471
 Lat 29.161, Long -82.164

RANKING PERCENTILE - FOOT TRAFFIC

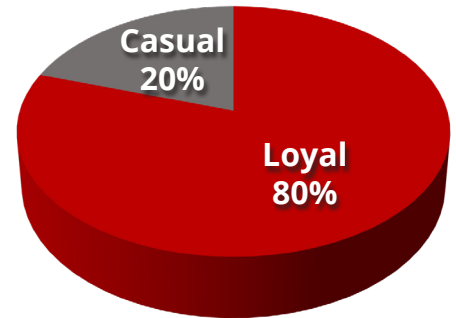
Area Shopping Centers	State	15 Miles	5 Miles
Boyd Market Center	96%	99%	98%

Area Big Box	State	15 Miles	5 Miles
Walmart	98%	94%	88%

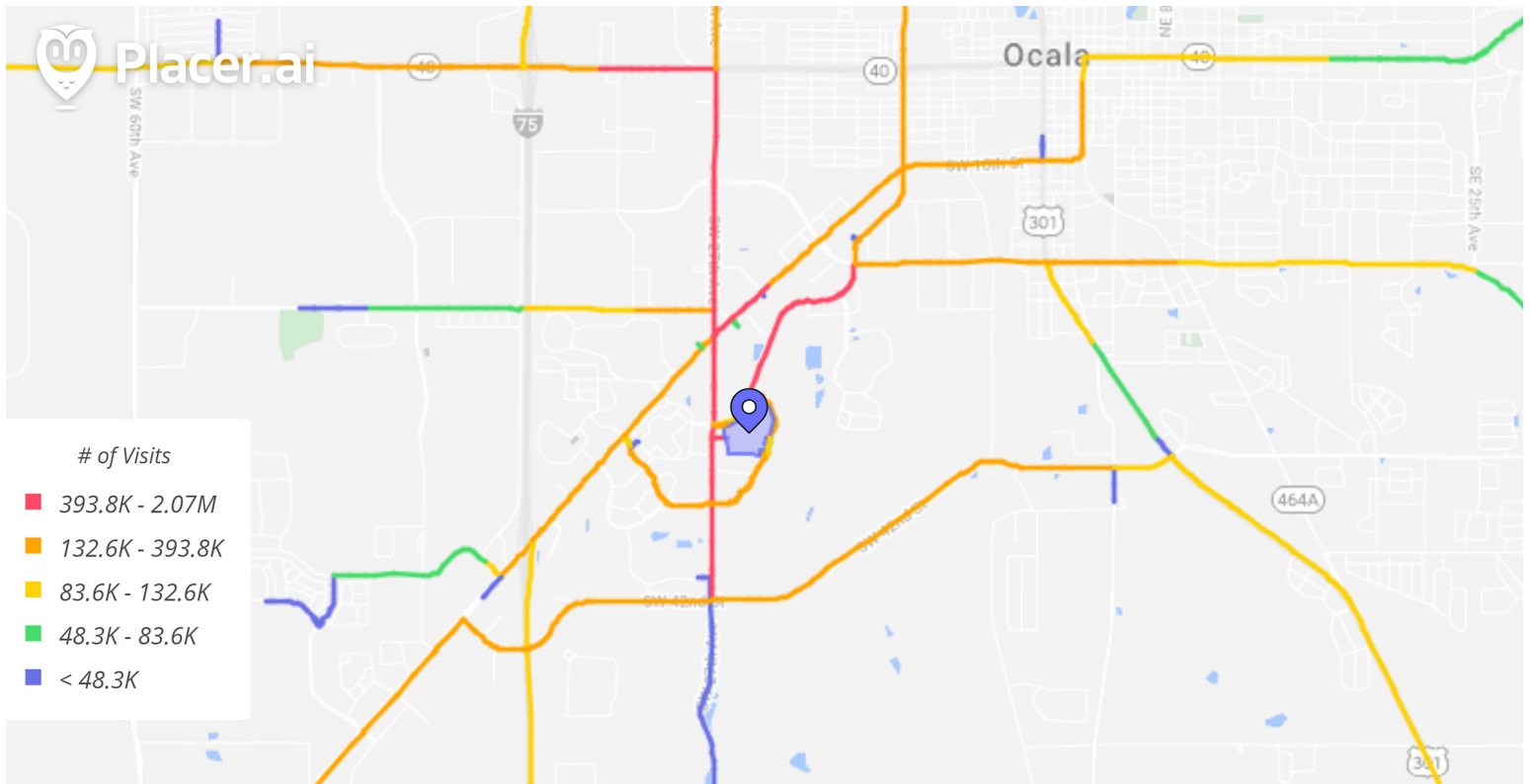
Area Fitness	State	15 Miles	5 Miles
Planet Fitness	91%	94%	92%

Data provided by Placer Labs Inc. (www.placer.ai)

CUSTOMER LOYALTY



CUSTOMER JOURNEY



Data provided by Placer Labs Inc. (www.placer.ai)

Rochelle DuBrule

407.581.6248 | rdubrue@crossmanco.com
 3333 South Orange Avenue, Suite 201, Orlando, FL

Licensed Real Estate Broker. No warranty expressed or implied has been made to the accuracy of the information provided herein, no liability assumed for error or omission.



www.crossmanco.com