

# Plug & Play Office Space Sublease

710 Lakeway Drive, Suite 195, Sunnyvale



## ±2,501 Square Feet Available

We are pleased to offer the following space:

- ◆ 2,501 sf of Office Space Available for Sublease
- ◆ LED: 7/31/2018 (landlord direct term available)
- ◆ Plug & Play
- ◆ 2 Fully Furnished Private Offices and 2 Conference Rooms
- ◆ 8 Workstations
- ◆ Kitchenette
- ◆ Shower Facilities Onsite
- ◆ Parking: 4/1,000 sf
- ◆ Excellent Access to Hwy 101
- ◆ Available Now



**Armand Tiano** 408.987.4146 [atiano@newmarkccarey.com](mailto:atiano@newmarkccarey.com) CA RE License #01758955

**Luke Allard** 408.982.8432 [lallard@newmarkccarey.com](mailto:lallard@newmarkccarey.com) CA RE License #01910058

**Newmark  
Knight Frank**

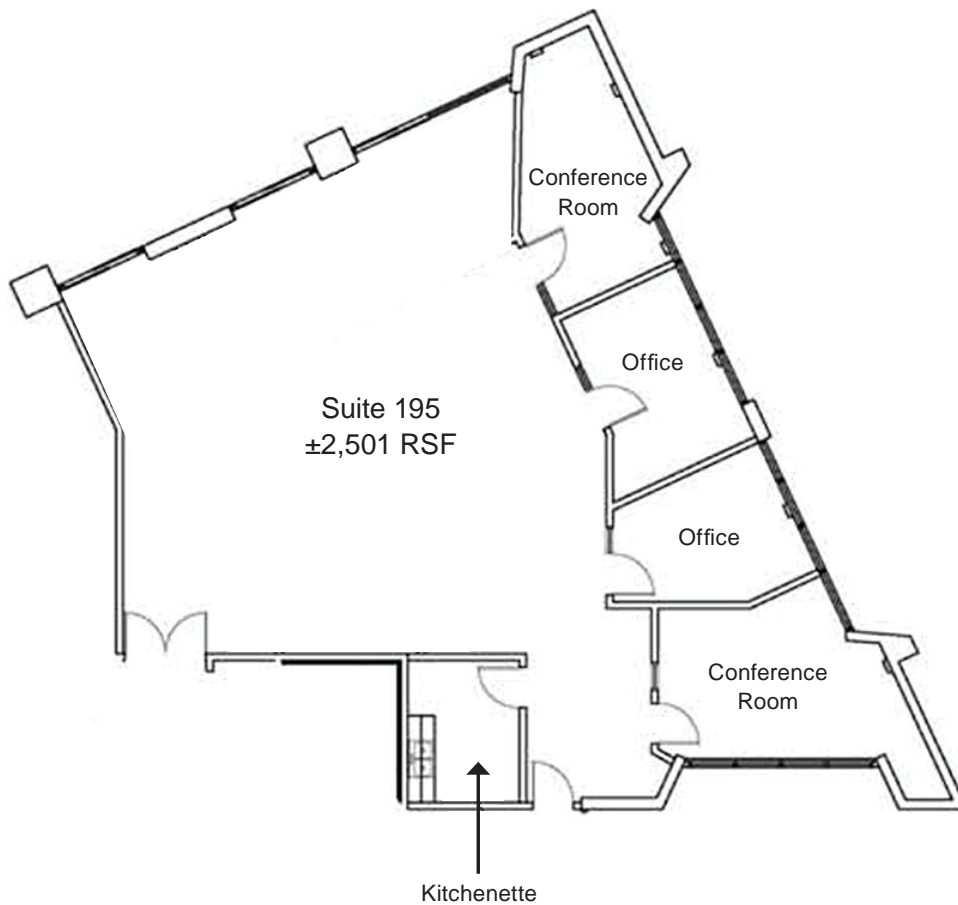
2804 Mission College Blvd., Suite 120, Santa Clara, CA 95054 [www.newmarkccarey.com](http://www.newmarkccarey.com)

# Plug & Play Office Space Sublease

710 Lakeway Drive, Suite 195, Sunnyvale



## Premises Floor Plan



**Armand Tiano** 408.987.4146 [atiano@newmarkccarey.com](mailto:atiano@newmarkccarey.com) CA RE License #01758955

**Luke Allard** 408.982.8432 [lallard@newmarkccarey.com](mailto:lallard@newmarkccarey.com) CA RE License #01910058

**Newmark  
Knight Frank**

2804 Mission College Blvd., Suite 120, Santa Clara, CA 95054 [www.newmarkccarey.com](http://www.newmarkccarey.com)

Procuring broker shall only be entitled to a commission, calculated in accordance with the rates approved by our principal only if such procuring broker executes a brokerage agreement acceptable to us and our principal and the conditions as set forth in the brokerage agreement are fully and unconditionally satisfied. Although all information furnished regarding property for sale, rental, or financing is from sources deemed reliable, such information has not been verified and no express representation is made nor is any to be implied as to the accuracy thereof and it is submitted subject to errors, omissions, change of price, rental or other conditions, prior sale, lease or financing, or withdrawal without notice and to any special conditions imposed by our principal.

17-1313\*10/17