



Partnership. Performance.



## PROPERTY OVERVIEW

Silver Arc Atrium is a 41,930 SF two-story medical/office building centrally located in the growing and affluent Katy area. The building has gone through recent exterior and common area renovations including the addition of a dynamic silver arc entrance awning. With its convenient access to Katy Freeway and Grand Parkway, close proximity to the various West Houston hospitals, and no medical restrictions, it is an excellent choice for any business in the medical industry.

Dillon Hurley, Associate  
713.993.7694  
dillon.hurley@avisonyoung.com

# 25722

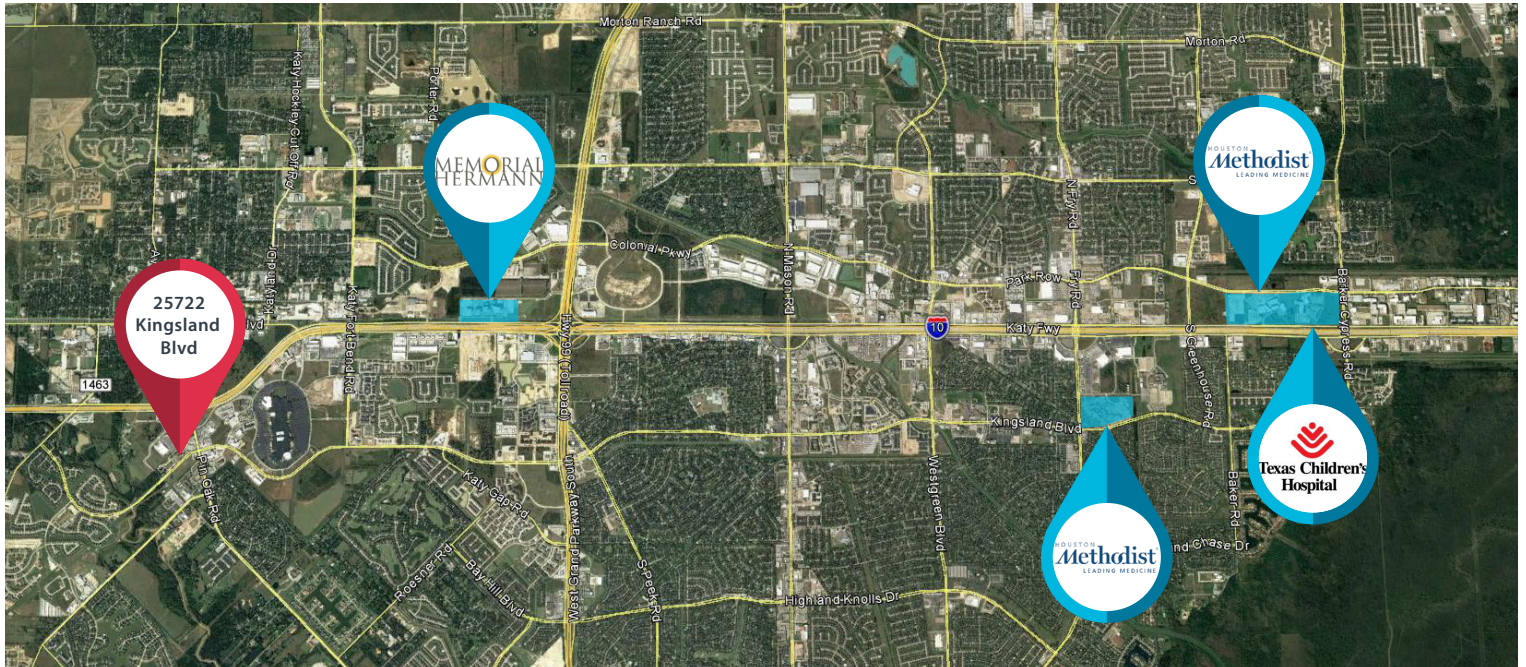
**KINGSLAND BLVD.**

KATY, TEXAS 77494



Platinum member

## 25722 Kingsland Blvd



### Property Highlights

#### BUILDING SIZE:

- 41,930 SF
- Two (2) Floors

#### LOCATION:

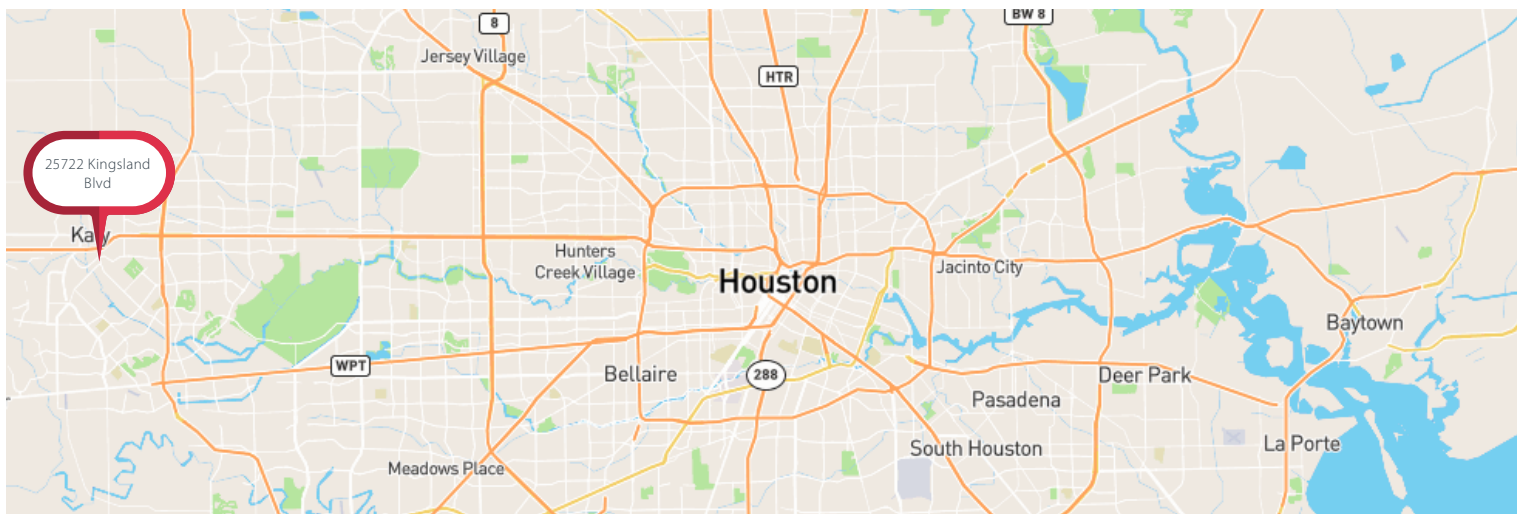
- Convenient access to Katy Freeway and Grand Parkway
- Prominent location in affluent suburban neighborhoods in the growing Katy area
- Close proximity to West Houston hospitals

#### PARKING:

- 5.0/1,000 SF
- Free surface parking

#### BUILDING AMENITIES:

- No medical restrictions
- Recent building exterior and common area renovations
- Abundant natural light



Dillon Hurley, Associate  
713.993.7694  
dillon.hurley@avisonyoung.com



Platinum member



25722 Kingsland Blvd



Dillon Hurley, Associate  
713.993.7694  
dillon.hurley@avisonyoung.com



Platinum member