



17 JOHN STREET

## Built, Furnished and Wired Space

**50,930 RSF Turn Key Office Space**  
Floors 2-6  
(Can be leased individually or as a larger block)

Half a block from Fulton Center  

 5-Minute walk to World Trade Center



17 JOHN STREET

## Stacking Plan



## Space Features Include:

- 50,930 RSF**
- Fully Wired**
- Uniquely appointed and built out for creative users**
- Large landscaped terrace on 3rd and 6th floor**
- All furniture, fixture & equipment can be made available**



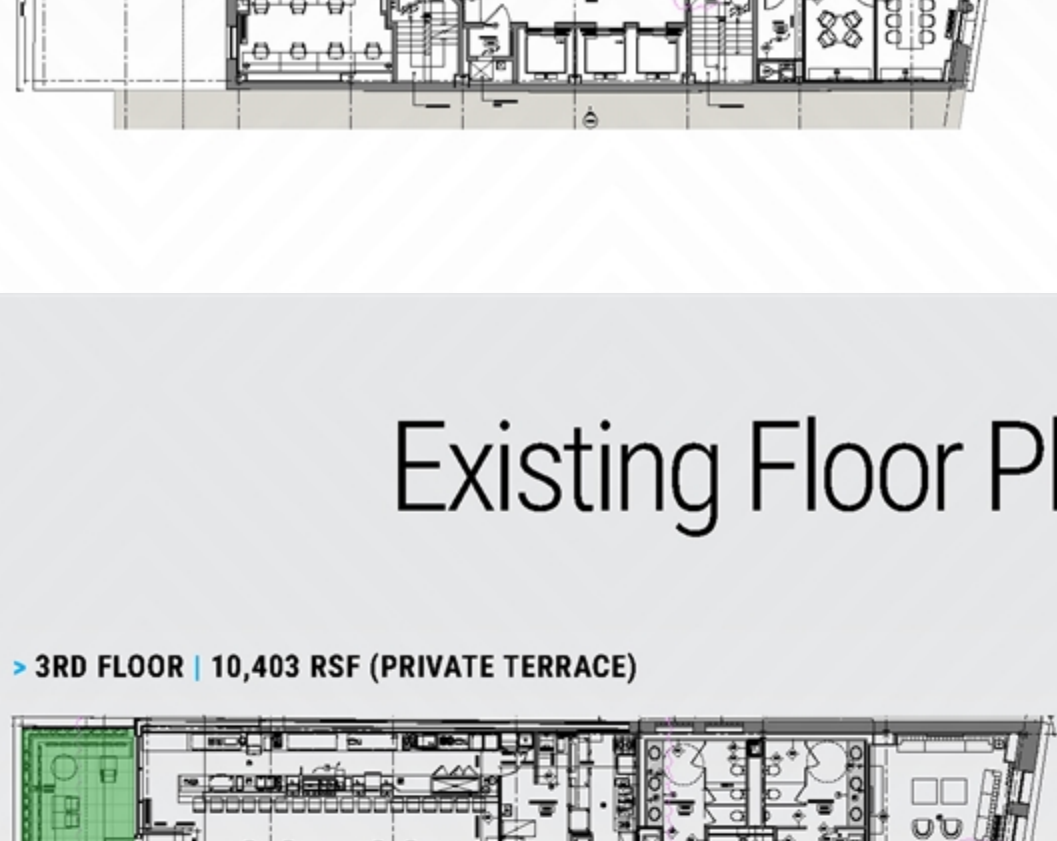
17 JOHN STREET

## Existing Floor Plans

> 6TH FLOOR | 8,855 RSF (PRIVATE TERRACE)



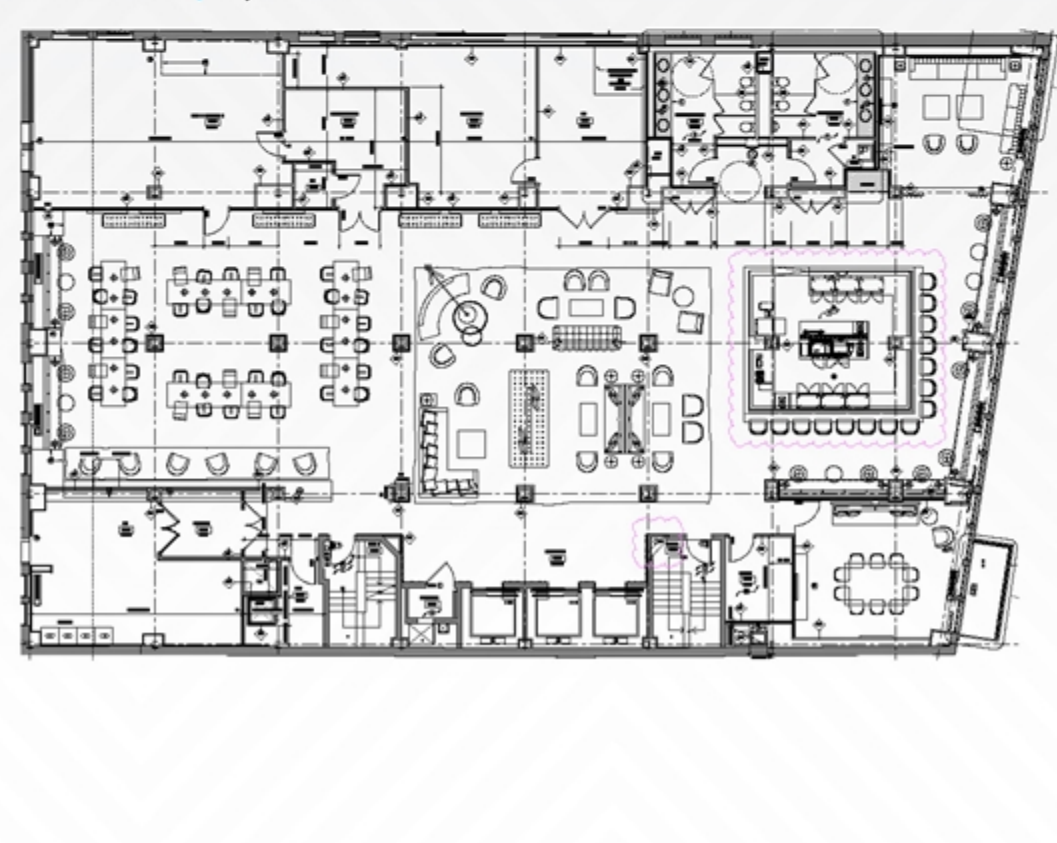
> 4TH/5TH FLOOR | 10,403 RSF



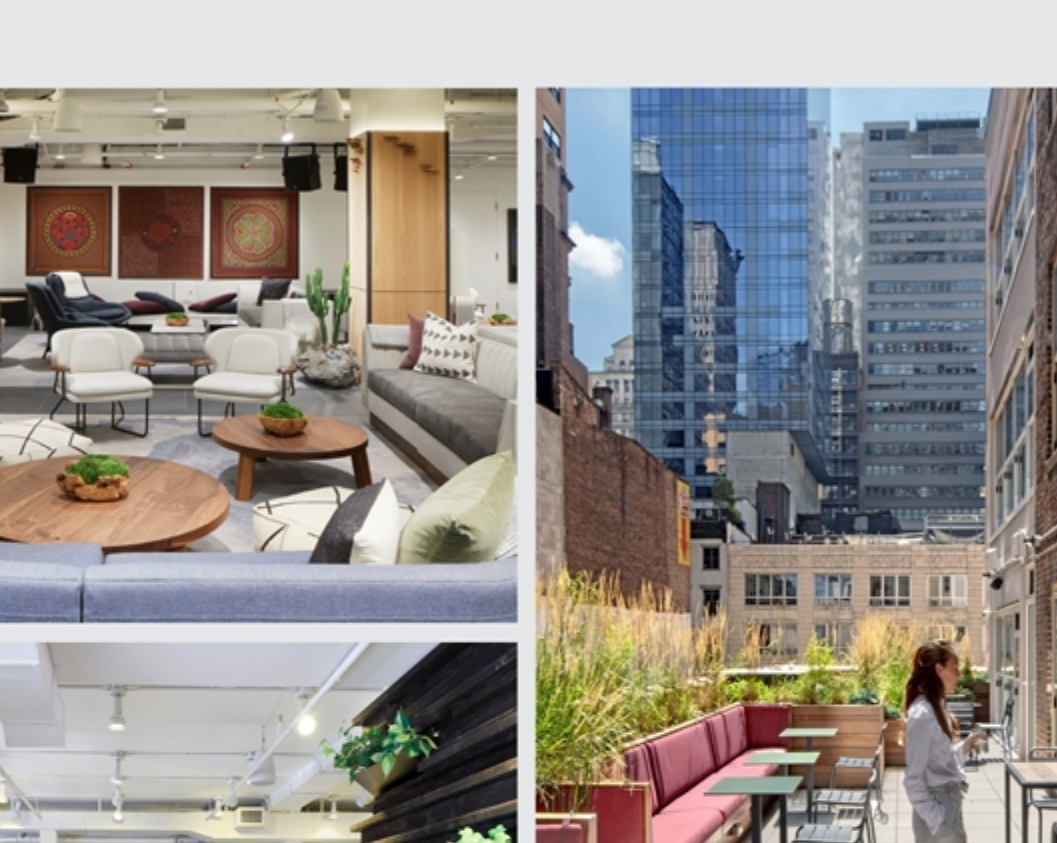
17 JOHN STREET

## Existing Floor Plans

> 3RD FLOOR | 10,403 RSF (PRIVATE TERRACE)

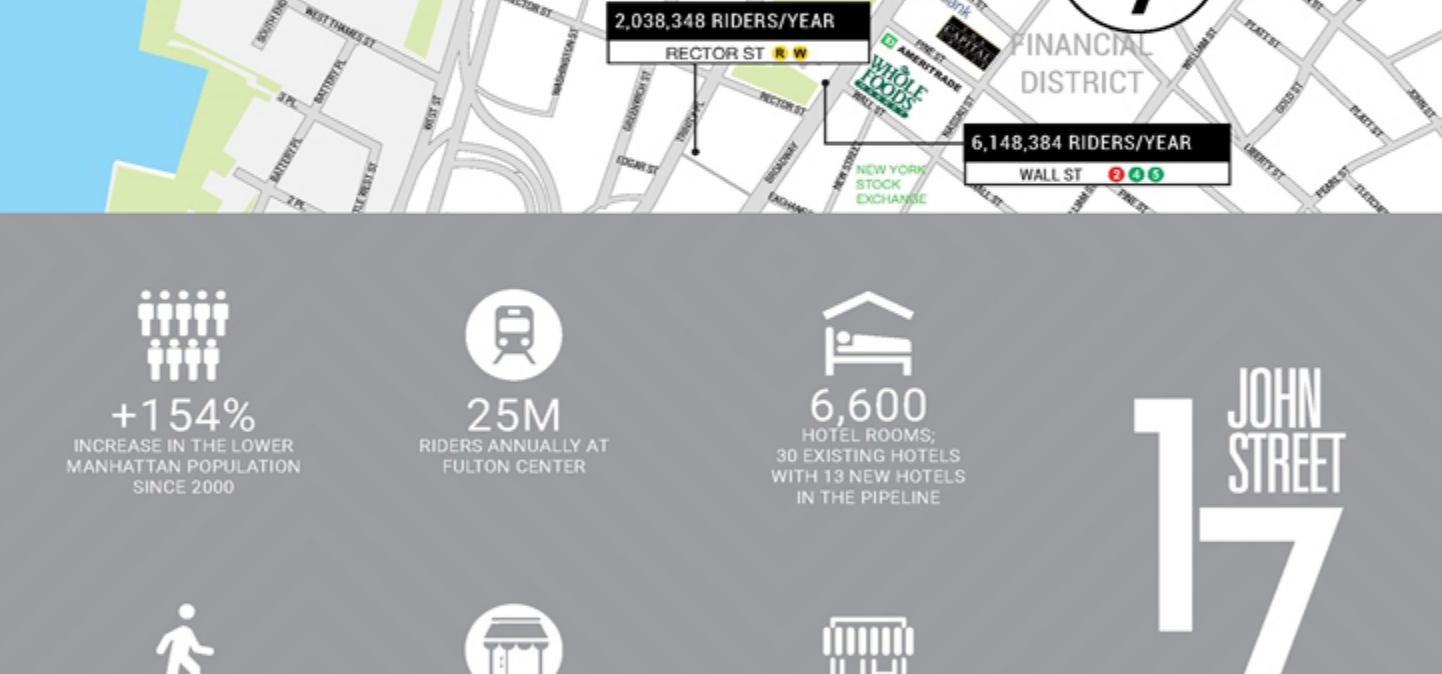
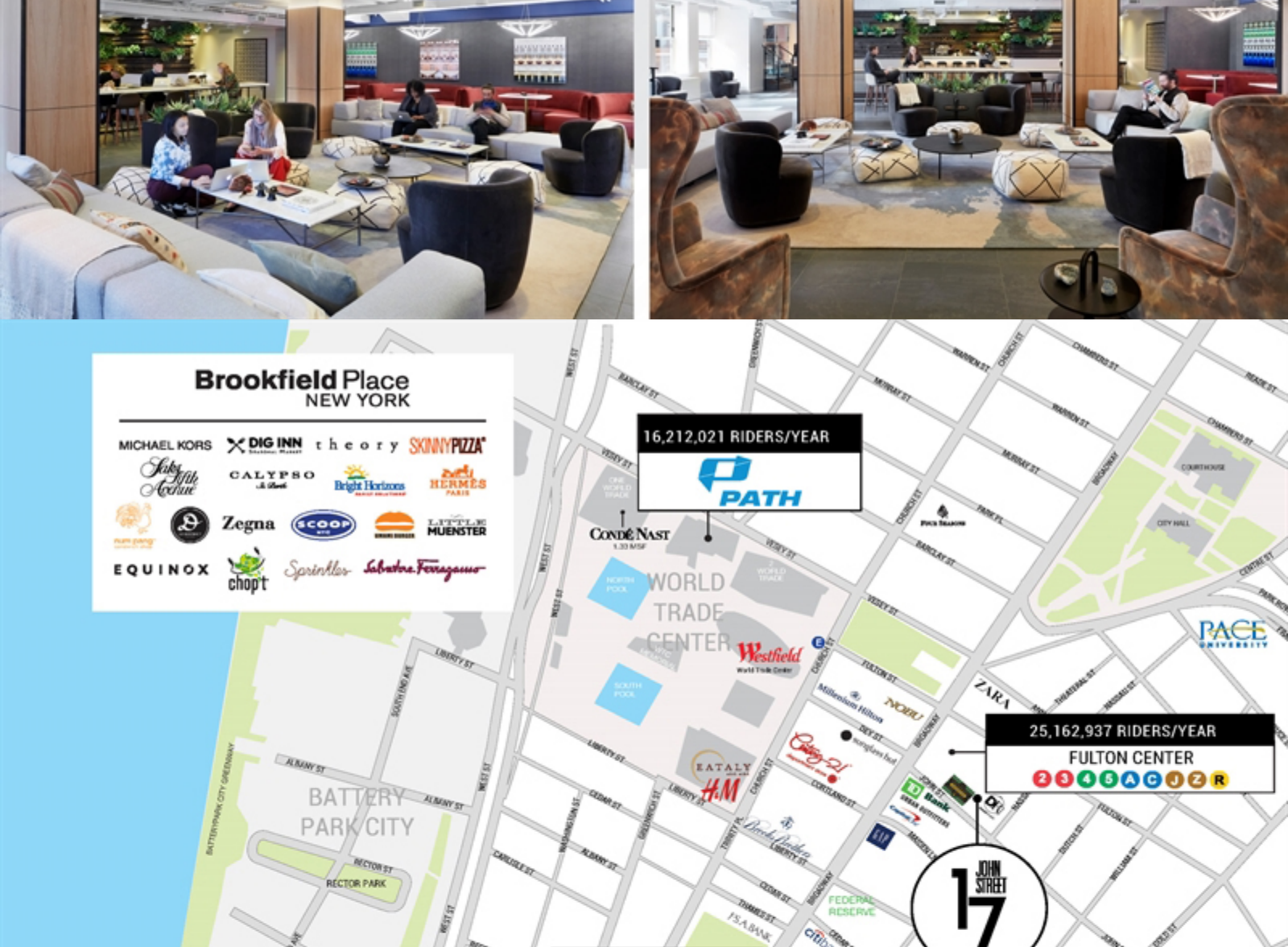


> 2ND FLOOR | 10,866 RSF



17 JOHN STREET

## Existing Office Photos



**NEWARK**    **BRIAN WATERMAN** 212.372.2299 bwaterman@ngkf.com    **BRENT OZAROWSKI** 212.372.2246 bozarowski@ngkf.com    **KEVIN SULLIVAN** 212.850.5462 kevin.sullivan@ngkf.com

**17 JOHN STREET**    [DOWNLOAD PDF](#)

The information contained herein has been obtained from sources deemed reliable but has not been verified and no guarantee, warranty or representation, either express or implied, is made with respect to such information. Terms of sale or lease and availability are subject to change or withdrawal without notice.