

37702-37728 ENTERPRISE  
FARMINGTON/F. HILLS, MICHIGAN

HI-TECH FOR SALE OR LEASE  
5,000 –17,293 Square Feet Available



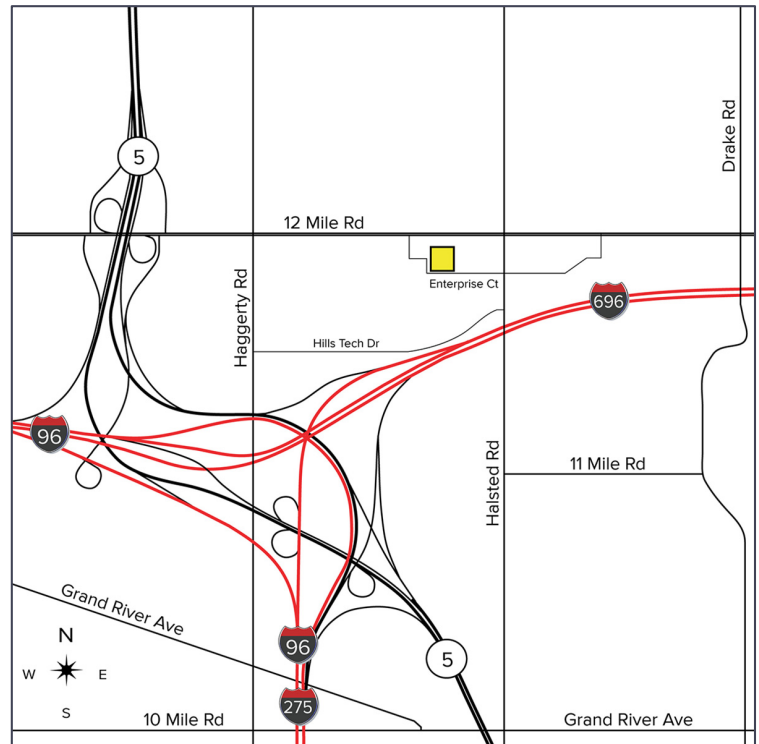
**SIGNATURE  
ASSOCIATES**  
KNOW SIGNATURE | KNOW RESULTS

## ENTERPRISE CORPORATE CENTRE



### PROPERTY FEATURES

- **FOR SALE OR LEASE**
- 5,000 – 17,293 square feet available for lease
- 17,293 square feet available for sale
- 19' clear height
- (3) 12x14 grade level doors, (1) truckwell
- Zoned light industrial
- 480 amps, 220 volts power
- Suite layouts can easily accommodate office, hi-tech and light industrial users
- Great hi-tech facility with close freeway proximity
- Build out available
- Lease Rate: \$7.95/sf NNN
- Sale Price: Negotiable



For more information, please contact:

**DAVE GREEN**  
(248) 948 4184  
dgreen@signatureassociates.com

**JASON KELMIGIAN**  
(248) 359 0629  
jkelmigian@signatureassociates.com

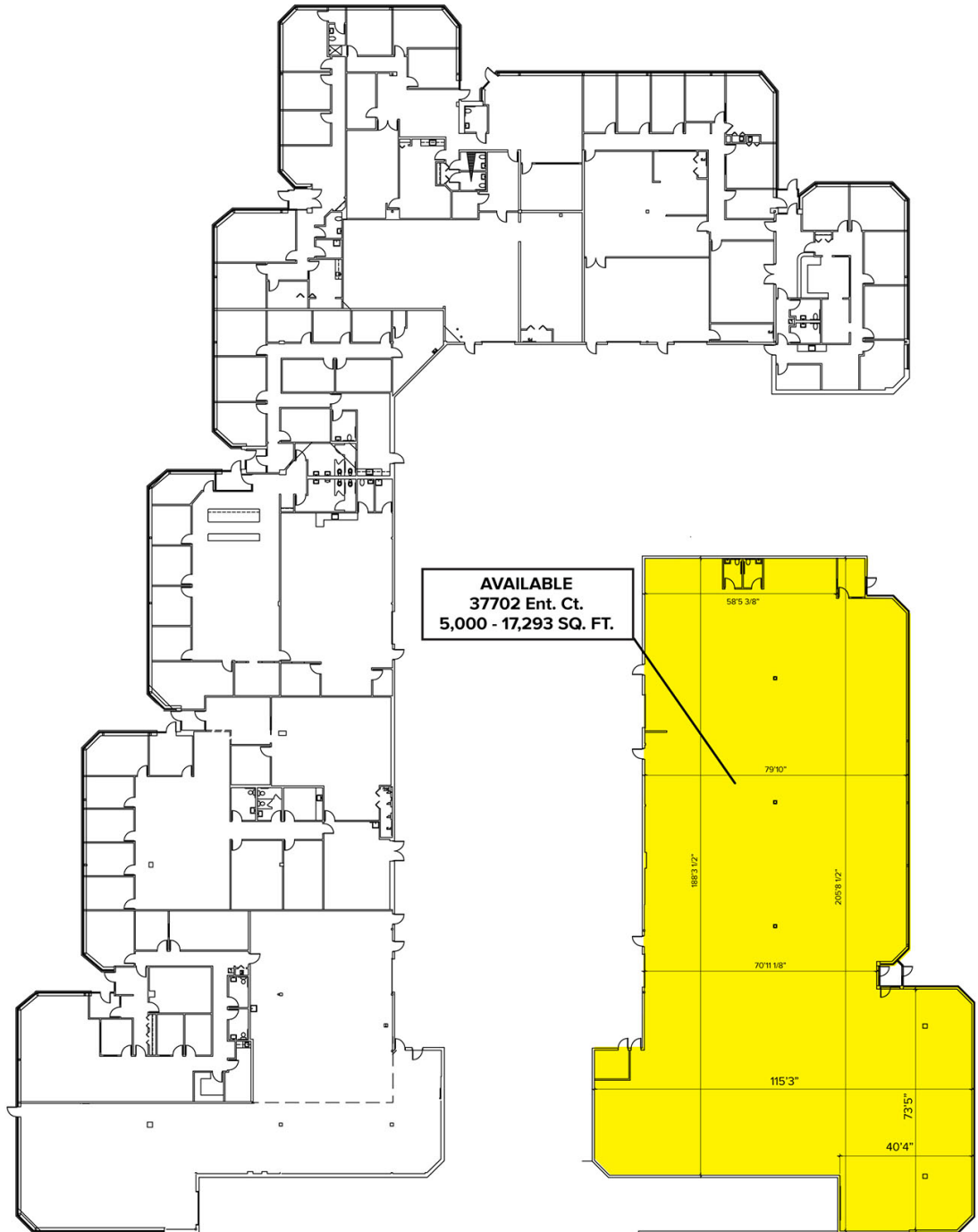
**SIGNATURE ASSOCIATES**  
One Towne Square, Suite 1200  
Southfield, MI 48076  
www.signatureassociates.com

# 37702-37728 Enterprise – Farmington Hills/F. Hills, MI

Hi-Tech For Sale or Lease

5,000 – 17,293  
Square Feet  
AVAILABLE

## Site Plan



For more information, please contact:

**DAVE GREEN**  
(248) 948 4184  
dgreen@signatureassociates.com

**JASON KELMIGIAN**  
(248) 359 0629  
jkelmigian@signatureassociates.com

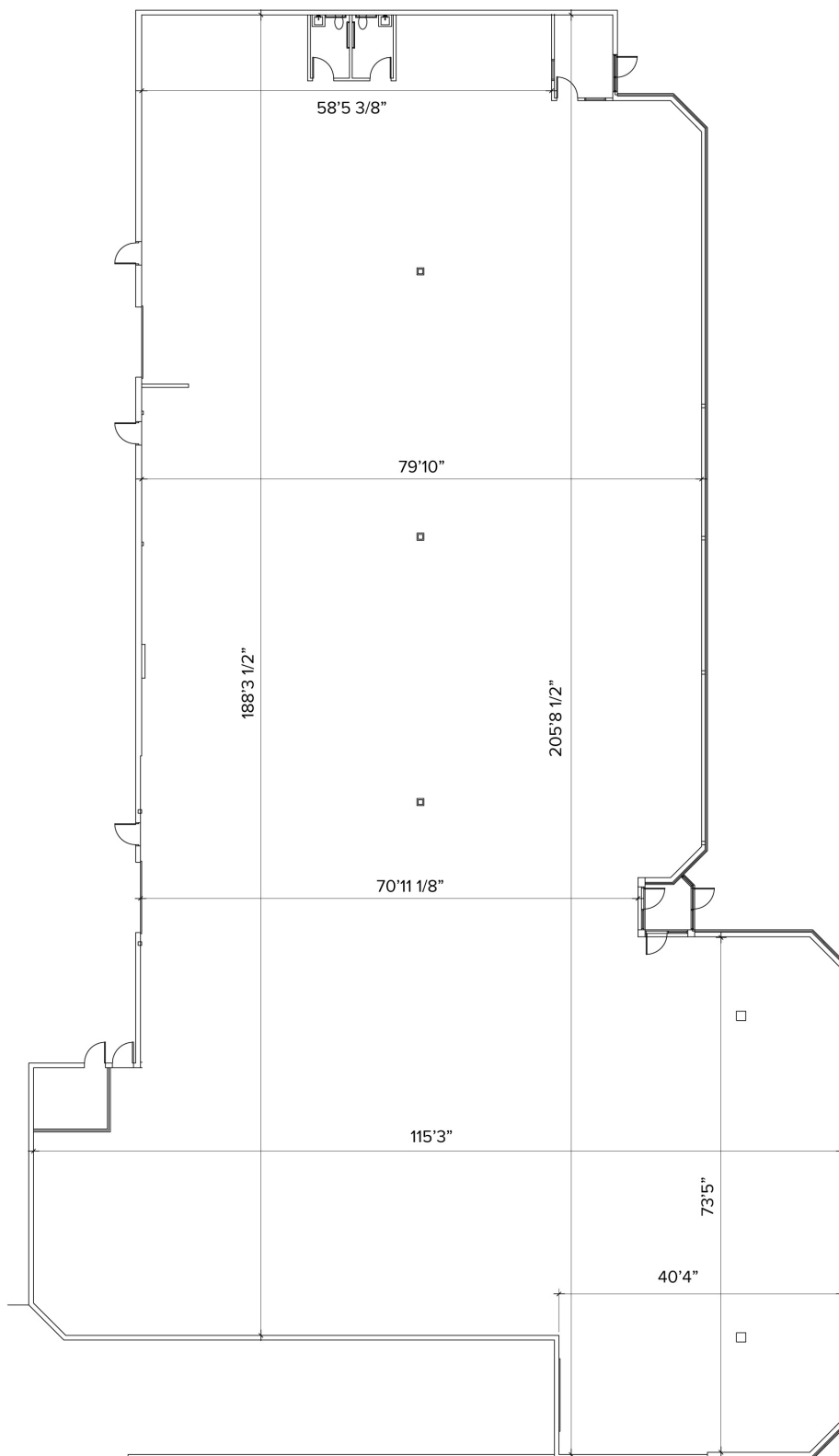
**SIGNATURE ASSOCIATES**  
One Towne Square, Suite 1200  
Southfield, MI 48076  
www.signatureassociates.com

# 37702-37728 Enterprise – Farmington Hills/F. Hills, MI

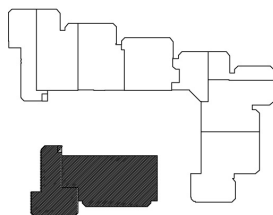
## Hi-Tech For Sale or Lease

5,000 – 17,293  
Square Feet  
AVAILABLE

### Unit 37702 – 37728 Floor Plan



TOTAL - 5,000 - 17,293 FT.



For more information, please contact:

**DAVE GREEN**  
(248) 948 4184  
dgreen@signatureassociates.com

**JASON KELMIGIAN**  
(248) 359 0629  
jkelmigian@signatureassociates.com

**SIGNATURE ASSOCIATES**  
One Towne Square, Suite 1200  
Southfield, MI 48076  
www.signatureassociates.com

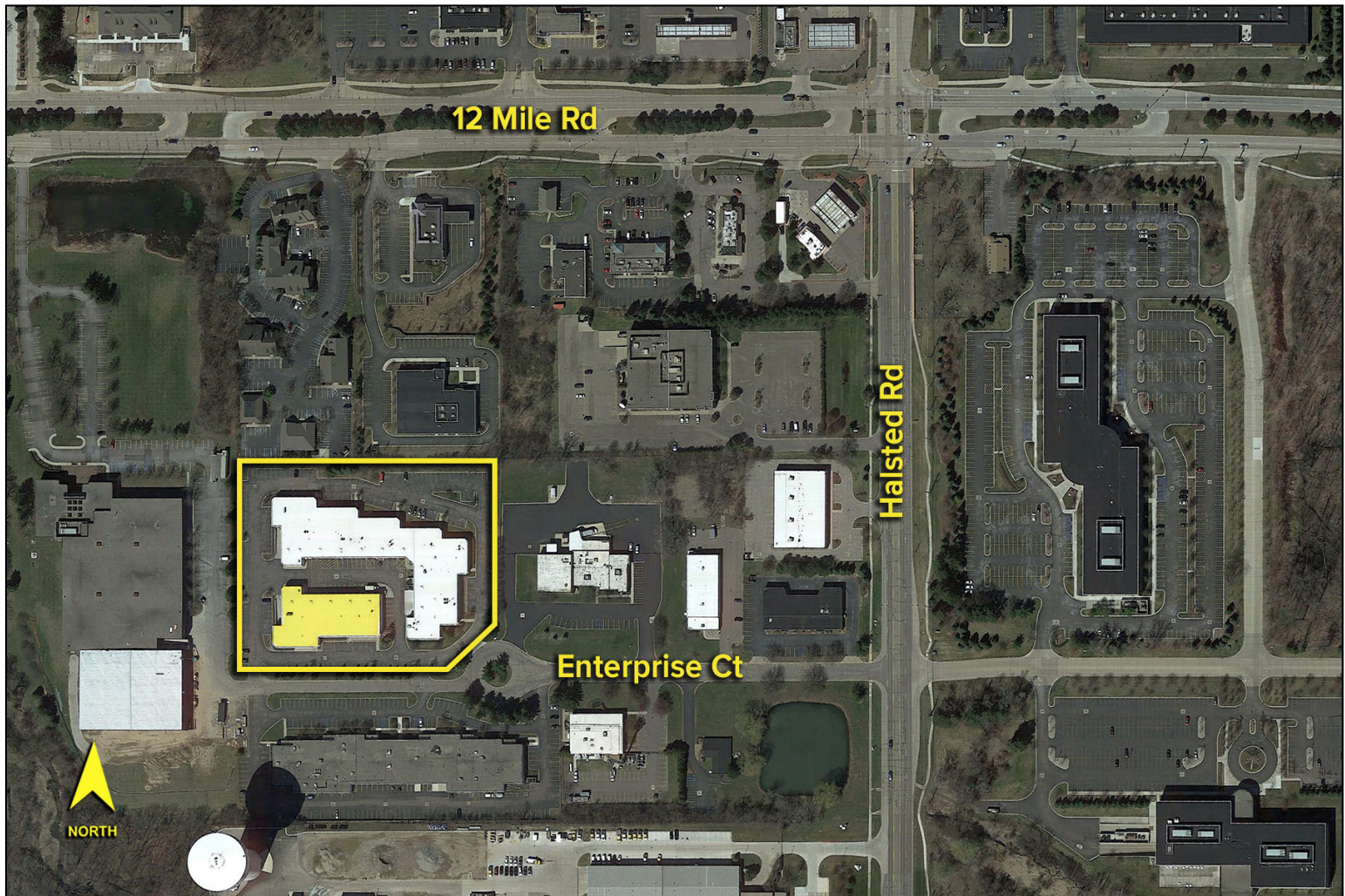


# 37702-37728 Enterprise – Farmington Hills/F. Hills, MI

Hi-Tech For Sale or Lease

5,000 – 17,293  
Square Feet  
AVAILABLE

Aerial



For more information, please contact:

**DAVE GREEN**  
(248) 948 4184  
dgreen@signatureassociates.com

**JASON KELMIGIAN**  
(248) 359 0629  
jkelmigian@signatureassociates.com

**SIGNATURE ASSOCIATES**  
One Towne Square, Suite 1200  
Southfield, MI 48076  
www.signatureassociates.com