

**Stafford
Smith
Realty**



#4274 ~ Vacant Land

**3001 E. Main Street
Millville, NJ 08332**

Land

Block: 582

Lot: 1

Land Size: 1,311 Acres

Building Size:

Tax Information

Land Assessment: \$ 183,600.

Improvement Assessment: \$ 0.

Total Assessment: \$ 183,600.

Taxes: \$ 6,223.

Tax Year: 2016

Tax Rate: 2.986/\$100

Equalization Ratio: 91.99%

Zoning: LC ~ Land Conservation

Remarks: 1,311 Acres of Vacant Land for Sale in Millville, NJ, Cumberland County.

Price: \$ Negotiable ~ Sale

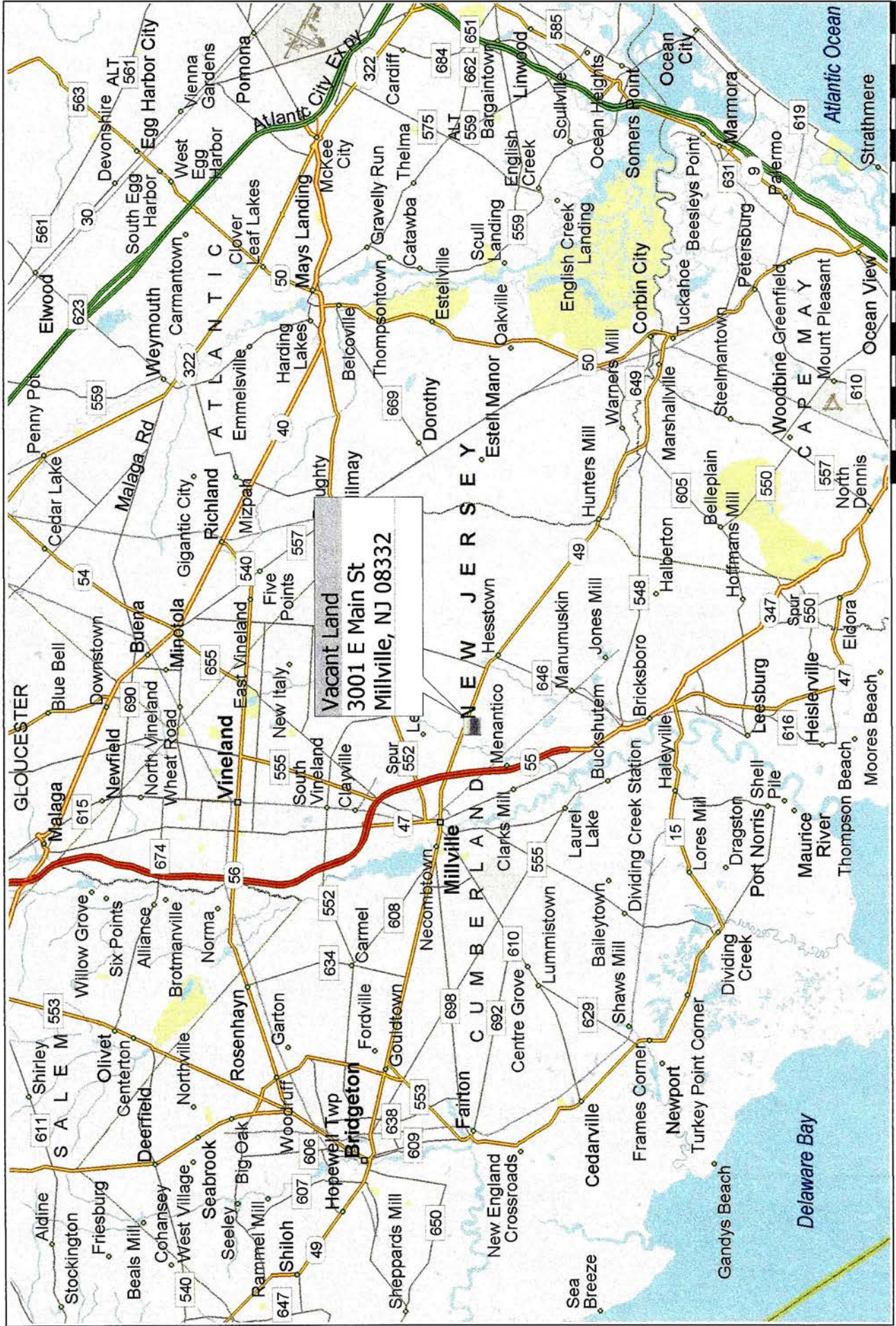
Please call **Ray S. Smith / Broker of Stafford Smith Realty** at **(732) 747-1000** for further details.

As we are representing the owner(s) of this offering, we ask that you do not enter the property without us and that you do not discuss the offering with tenants nor attempt to contact the owner(s). All information regarding property for sale, rental or financing is from sources deemed reliable. No representation is made as to the accuracy thereof and is submitted subject to errors, omissions, changes of price, rental, commission or other conditions, prior sale, lease, financing or withdrawal without notice.

630 Broad Street, Shrewsbury, New Jersey 07702-4118
4440 PGA Blvd., Ste. 600, Palm Beach Gardens, Florida 33410-6542
732-747-1000 • Ray@SSRealty.com • www.SSRealty.com

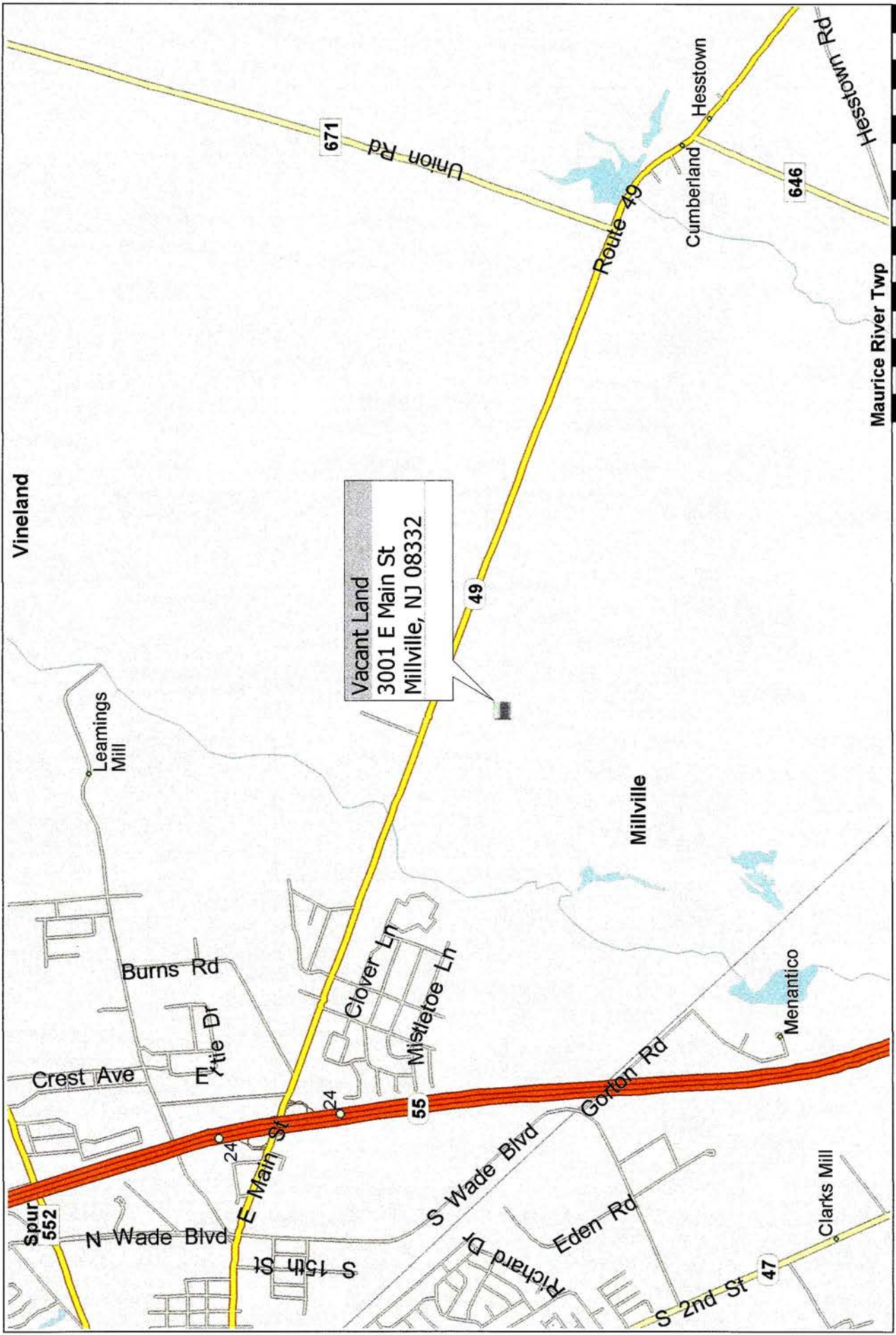


3001 E. Main Street ~ Millville ~ Cumberland County ~ NJ



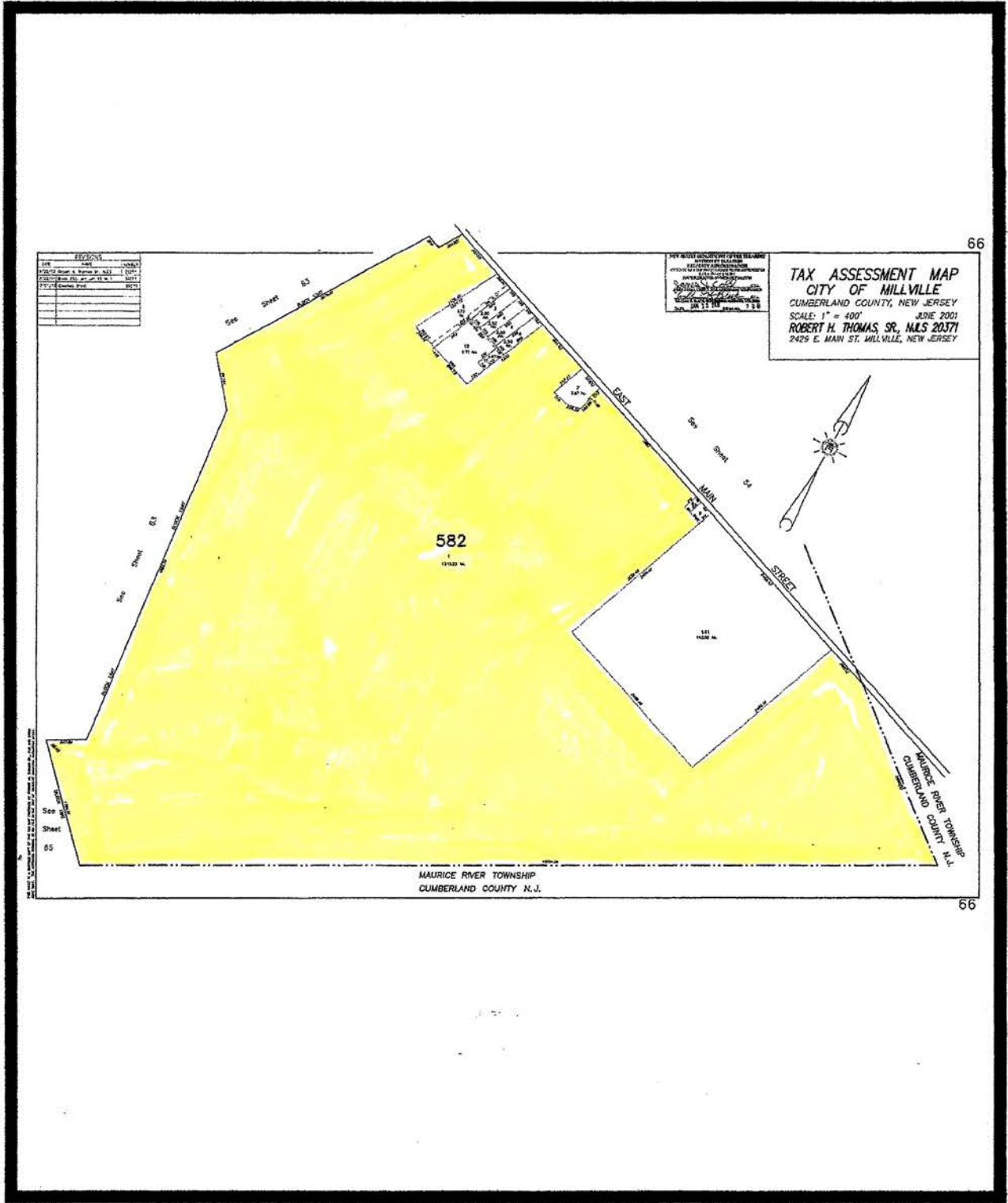
Copyright © and (P) 1988-2012 Microsoft Corporation and/or its suppliers. All rights reserved. <http://www.microsoft.com/mappoint/>
Certain mapping and direction data © 2012 NAVTEQ. All rights reserved. The Data for areas of Canada includes information taken with permission from Canadian authorities, including: © Her Majesty the Queen in Right of Canada, © Queen's Printer for Ontario, NAVTEQ and NAVTEQ ON BOARD are trademarks of NAVTEQ. © 2012 Tele Atlas North America, Inc. All rights reserved. Tele Atlas and Tele Atlas North America are trademarks of Tele Atlas, Inc. © 2012 by Applied Geographic Solutions. All rights reserved. Portions © Copyright 2012 by Woodall Publications Corp. All rights reserved.

3001 E. Main Street ~ Millville ~ Cumberland County ~ NJ

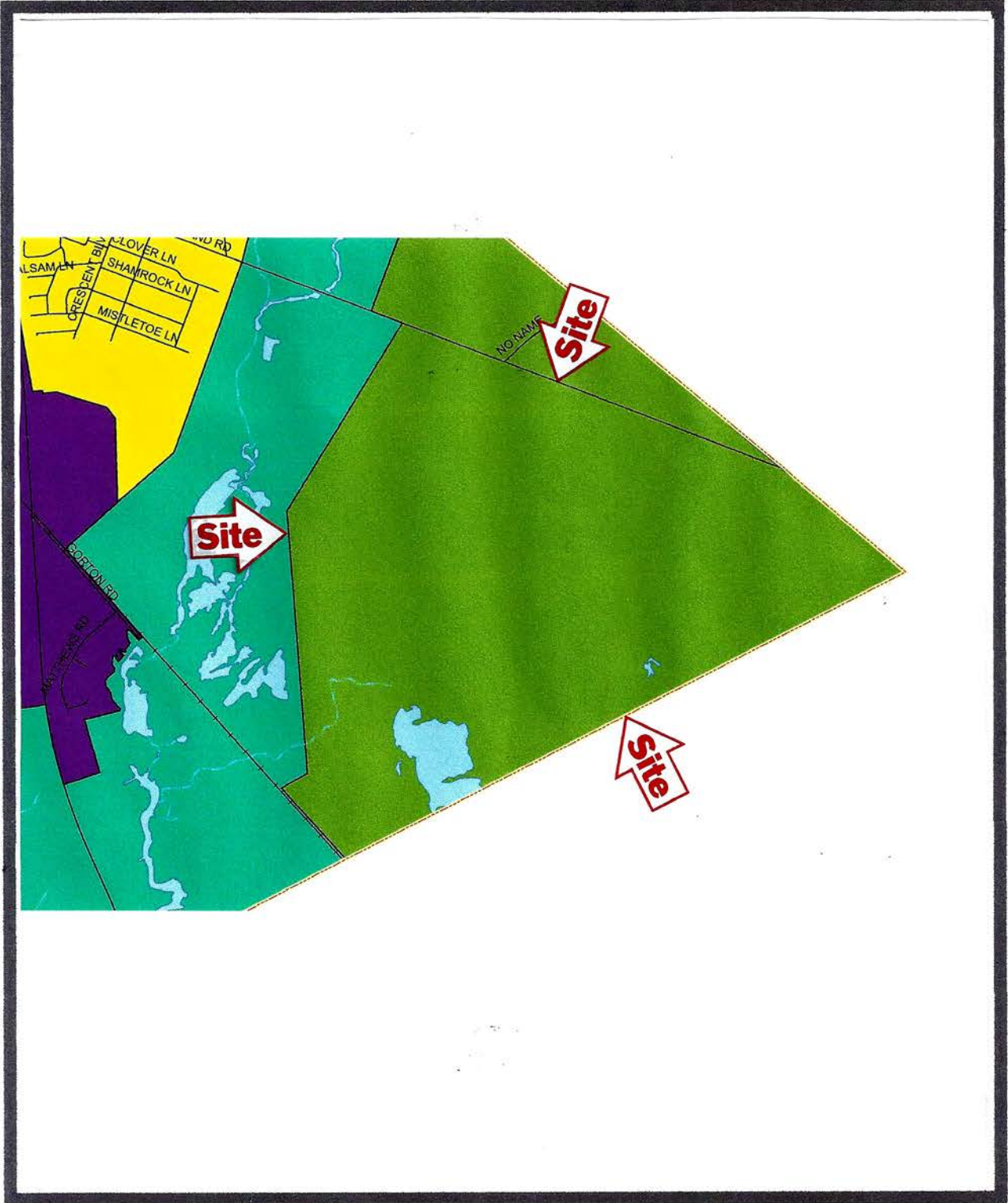


Copyright © and (P) 1988-2012 Microsoft Corporation and/or its suppliers. All rights reserved. <http://www.microsoft.com/mappoint/>
Certain mapping and direction data © 2012 NAVTEQ. All rights reserved. The Data for areas of Canada includes information taken with permission from Canadian authorities, including: © Her Majesty the Queen in Right of Canada, © Queen's Printer for Ontario, NAVTEQ and NAVTEQ ON BOARD are trademarks of NAVTEQ. © 2012 Tele Atlas North America, Inc. All rights reserved. Tele Atlas and Tele Atlas North America are trademarks of Tele Atlas, Inc. © 2012 by Applied Geographic Solutions. All rights reserved. Portions © Copyright 2012 by Woodall Publications Corp. All rights reserved.

Tax Map Location



Zoning Map



3001 E Main St, Millville, NJ 08332, Cumberland County

Demographics

Based on ZIP Code: **08332**

Population

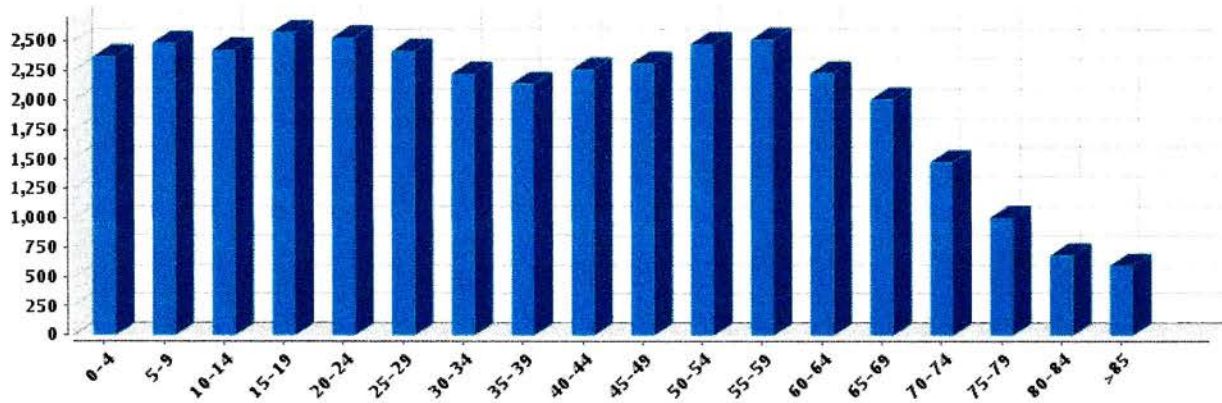
Summary

Estimated Population: **36,802**
Population Growth (since 2010): **-0.8%**
Population Density (ppl / mile): **347**
Median Age: **38.14**

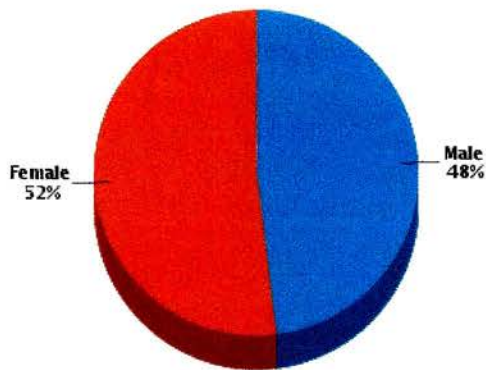
Household

Number of Households: **13,674**
Household Size (ppl): **3**
Households w/ Children: **4,333**

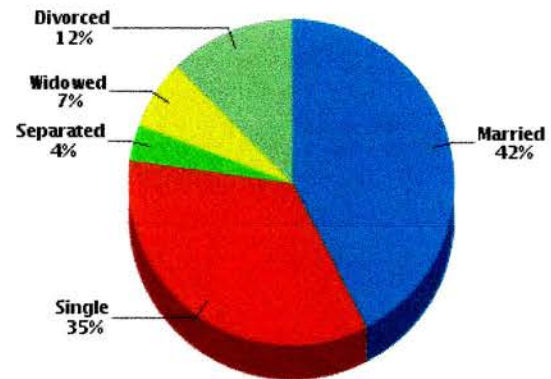
Age



Gender



Marital Status



Housing

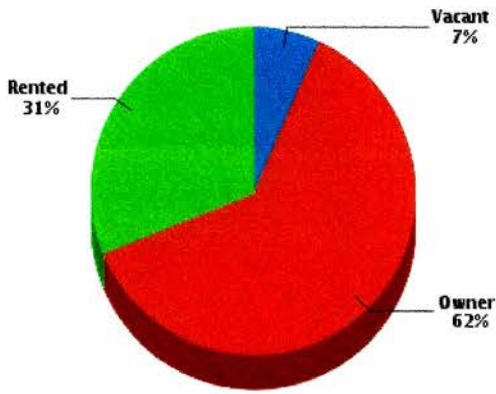
Summary

Median Home Sale Price: **\$122,500**
Median Year Built: **1969**

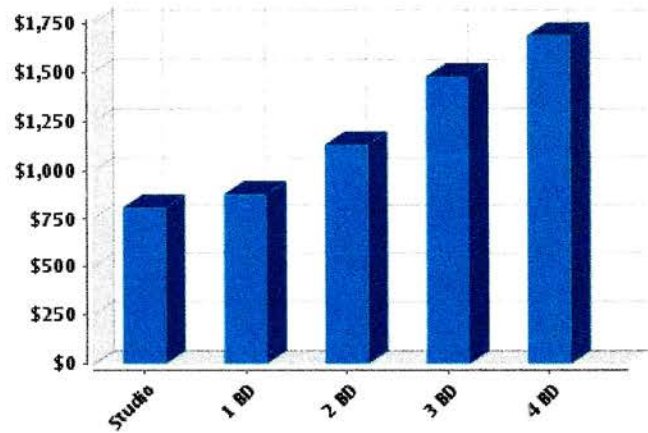
Stability

Annual Residential Turnover: **12.04%**

Occupancy



Fair Market Rents (County)

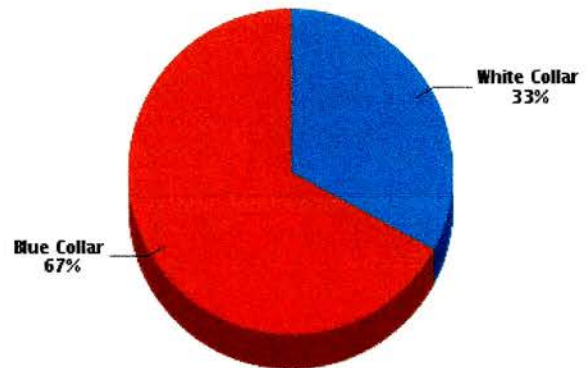


Quality of Life

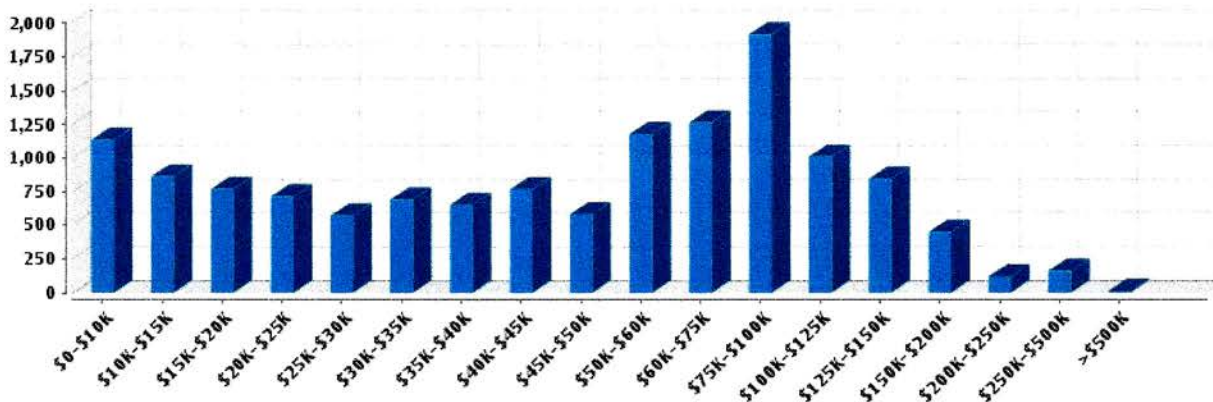
Workers by Industry

Agricultural, Forestry, Fishing:	65
Mining:	1
Construction:	266
Manufacturing:	2,135
Transportation and Communications:	245
Wholesale Trade:	100
Retail Trade:	2,173
Finance, Insurance and Real Estate:	110
Services:	544
Public Administration:	694
Unclassified:	45

Workforce



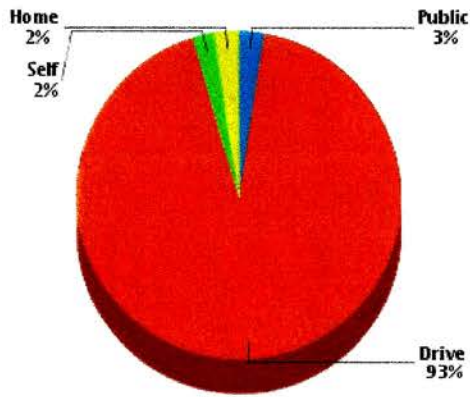
Household Income



Average Household Income: **\$64,922**

Average Per Capita Income: **\$24,342**

Commute Method



Weather

January High Temp (avg °F):	41.3
January Low Temp (avg °F):	24.1
July High Temp (avg °F):	85.9
July Low Temp (avg °F):	66.6
Annual Precipitation (inches):	43.2

Education

Educational Climate Index (1)

Highest Level Attained



Less than 9th grade:	1,432
Some High School:	2,760
High School Graduate:	10,079
Some College:	4,773
Associate Degree:	1,718
Bachelor's Degree:	2,606
Graduate Degree:	1,028

(1) This measure of socioeconomic status helps identify ZIP codes with the best conditions for quality schools. It is based on the U.S. Census Bureau's Socioeconomic Status (SES) measure with weights adjusted to more strongly reflect the educational aspect of social status (education 2:1 to income & occupation). Factors in this measure are income, educational achievement and occupation of persons within the ZIP code. Since this measure is based on the population of an entire ZIP code, it may not reflect the nature of an individual school.
 (2) Powered by Onboard Informatics. Information is deemed reliable but not guaranteed. Copyright © 2014 Onboard Informatics. All rights reserved.

Schools

Radius: **2.00 mile(s)**

Public - Elementary

<i>Millville School District</i>	Distance	Grades	Students	Students per Teacher	SchoolDigger .com Rating (1)	Community Rating (2)
<u>Holly Heights Elementary School</u> 2509 E Main St	1.5	K-5th	500	13		

Private

	Distance	Grades	Students	Classrooms	Community Rating (2)
Open Bible Baptist Academy 2625 E Main St	1.32	K-12th	7		

(1) SchoolDigger Ratings provide an overview of a school's test performance. The ratings are based strictly on test score performance for that state's standardized tests. Based on a scale of 1-5. (© 2006-2016 SchoolDigger.com)
 (2) The community rating is the overall rating that is submitted by either a Parent/Guardian, Teacher, Staff, Administrator, Student or Former Student. There will be only one rating per school. Based on a scale of 1-5.
 (3) Powered by Onboard Informatics. Information is deemed reliable but not guaranteed. Copyright © 2014 Onboard Informatics. All rights reserved.

Local Businesses

Radius: **2.00 mile(s)**

Eating - Drinking

	Address	Phone #	Distance	Description
Surfside Foods	724 Orange St	(856) 506-8342	1.76	Seafood - Retail

Shopping

	Address	Phone #	Distance	Description
Bjg Electronics Inc	5 Reese Rd	(856) 765-4031	1.41	Electronic Equipment And Supplies - Retail
Green Rock Sales LLC	2250 Shamrock Ln	(610) 715-8431	1.87	General Merchandise - Retail
T-Fal	2121 Eden Rd	(856) 825-6300	1.93	Housewares - Retail

(1) Powered BY Onboard Informatics. Information IS deemed reliable but NOT GUARANTEED. Copyright © 2014 Onboard Informatics. ALL rights reserved.