



## 2408 Westwood Drive

Westlake, Louisiana 70669

### Property Highlights

- ±6,400 SF commercial/retail building available
- Building is available for sale or lease (pricing below)
- Ideal use is single tenant retail or warehouse user
- Zoned Mixed Use (municipal)

### Pricing

Sale Price: \$425,000

Lease Rate: \$10.00 SF/yr (NNN)



**CALL OR EMAIL FOR MORE INFORMATION**

For more information

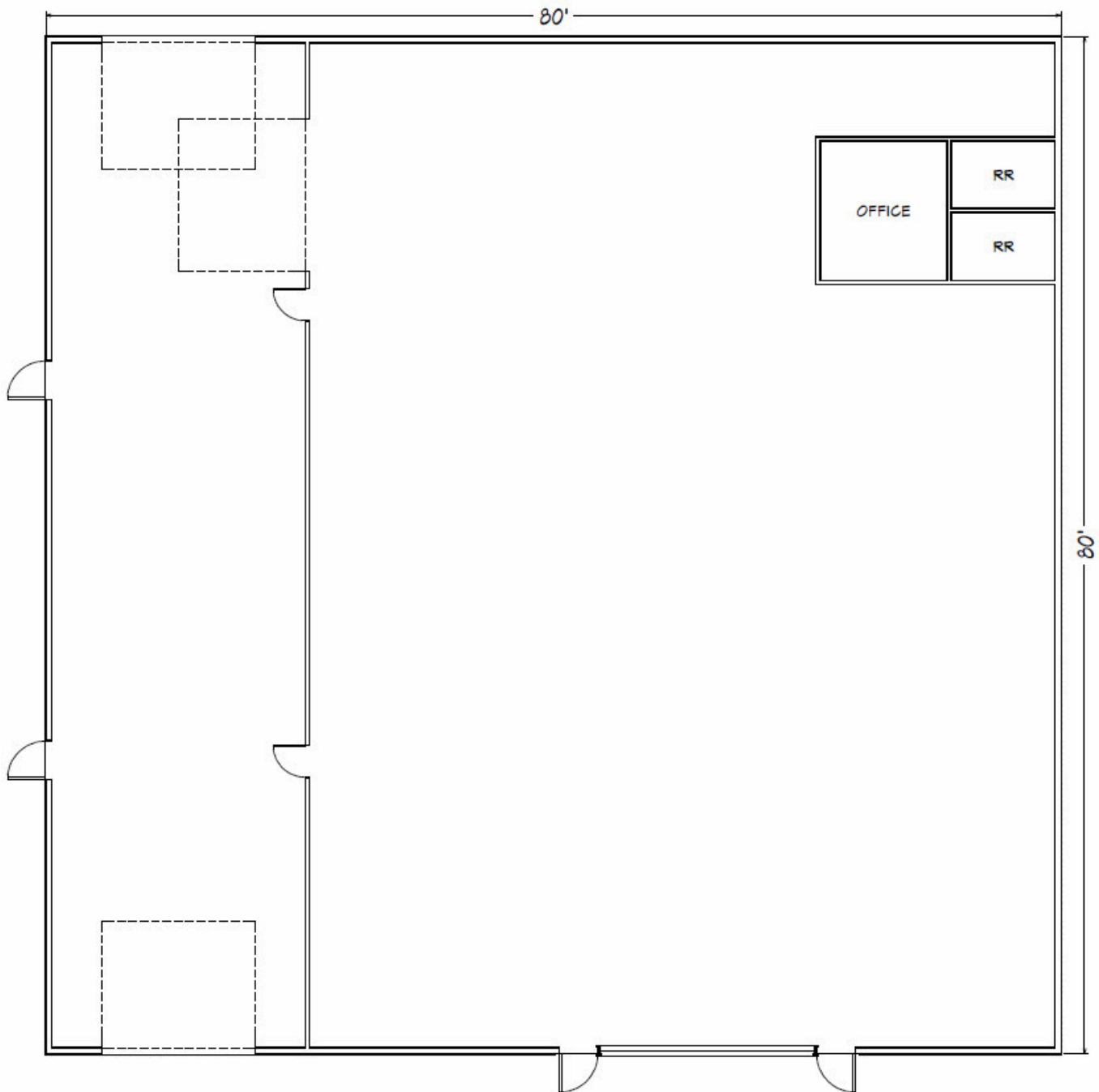
**Andrew Vanchiere, CCIM, SIOR**

O: 337 310 7333 x214 | C: 337 304 1341  
andrewvanchiere@latterblum.com

NO WARRANTY OR REPRESENTATION, EXPRESS OR IMPLIED, IS MADE AS TO THE ACCURACY OF THE INFORMATION CONTAINED HEREIN, AND THE SAME IS SUBMITTED SUBJECT TO ERRORS, OMISSIONS, CHANGE OF PRICE, RENTAL OR OTHER CONDITIONS, PRIOR SALE, LEASE OR FINANCING, OR WITHDRAWAL WITHOUT NOTICE, AND OF ANY SPECIAL LISTING CONDITIONS IMPOSED BY OUR PRINCIPALS NO WARRANTIES OR REPRESENTATIONS ARE MADE AS TO THE CONDITION OF THE PROPERTY OR ANY HAZARDS CONTAINED THEREIN ARE ANY TO BE IMPLIED. LICENSED IN LOUISIANA.

1424 Ryan Street  
Lake Charles, LA 70601  
337 310 7333 tel  
**latterblum.com**

# Property Floor Plan



Floor plan not drawn to scale, for illustration purposes only