



**1456 W. SAN CARLOS
SAN JOSE, CALIFORNIA**

**MIDTOWN SAN JOSE- CORNER LOT
Available for GROUND LEASE**



PROPERTY INFORMATION:

- 17,168± SF Parcel Available
- 225 Feet of Frontage on W. San Carlos Street
- Heavy Traffic Area
- In The Rapidly Developing Midtown Neighborhood, With New Residences and Commercial Units Coming In
- Zoned CN, With Many Approved Uses
- Contact Agent For Pricing Information

ESTIMATED DEMOGRAPHICS:

	<u>1 MILE</u>	<u>3 MILE</u>	<u>5 MILES</u>
POPULATION:	34,573	249,068	623,867
AVG. HH INCOME:	\$100,682	\$104,747	\$108,835

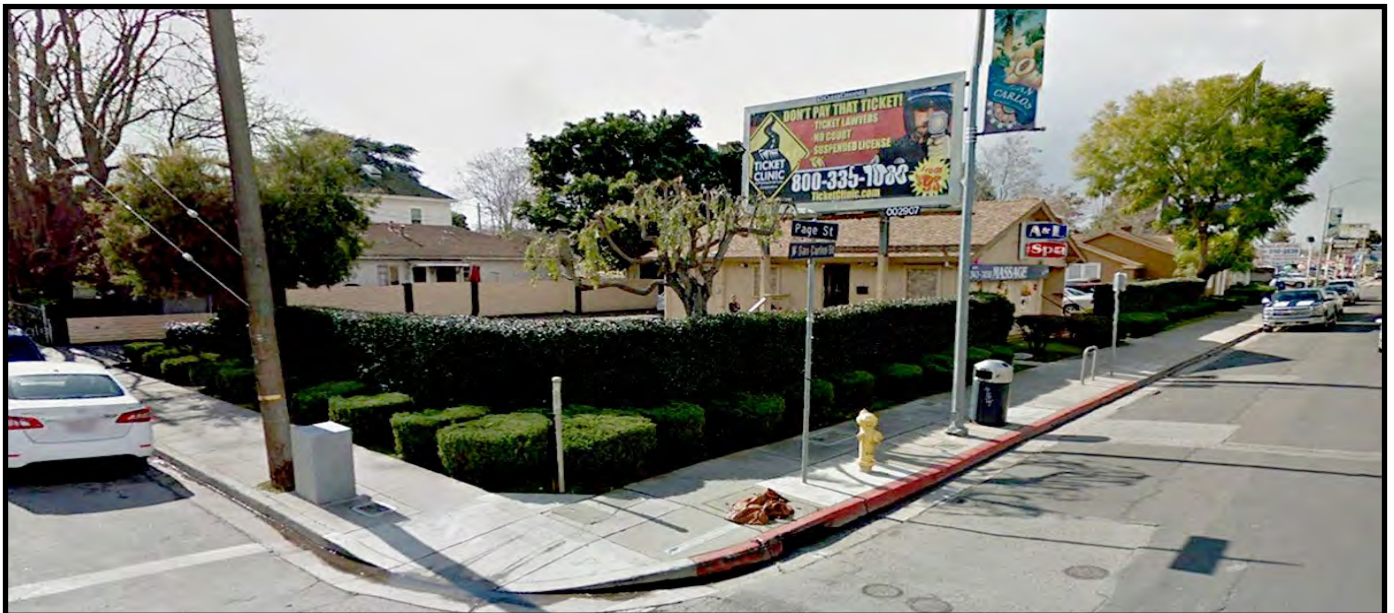
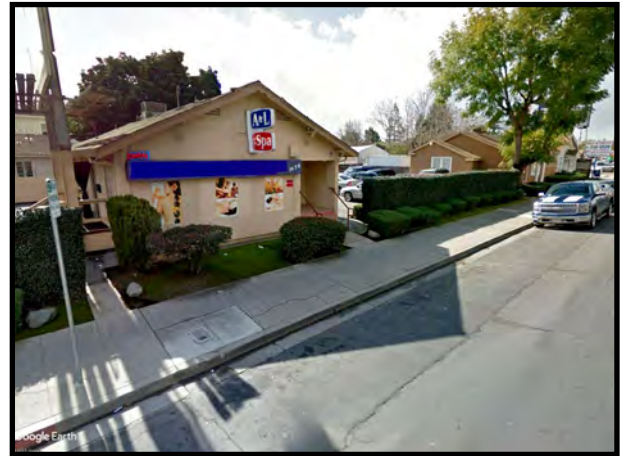
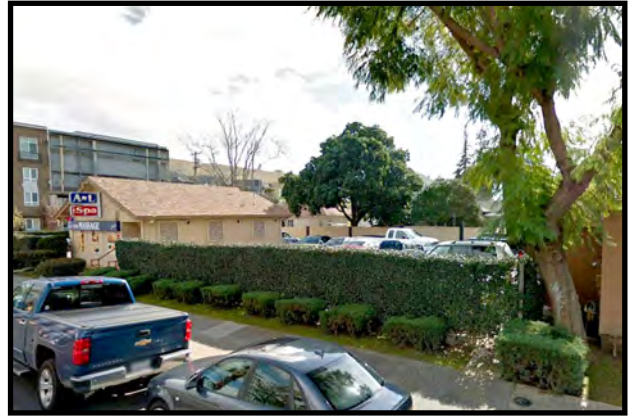
FOR MORE INFORMATION CONTACT:

David Taxin
Lic. #00983163

dtaxin@moinc.net
(408) 477-2508
(408) 378-5900

MEACHAM/OPPENHEIMER, INC.
CORFAC INTERNATIONAL
8 No. San Pedro St., Suite 300
San Jose, California 95110
Tel: 408.378.5900
Fax: 408.378.5903
www.moinc.net

1456 W. San Carlos Street • San Jose, California



MEACHAM/OPPENHEIMER, INC.
CORFAC INTERNATIONAL
8 No. San Pedro St., Suite 300
San Jose, California 95110
Tel: 408.378.5900
www.moinc.net

David Taxin
Lic. #00983163
dtaxin@moinc.net
(408) 477-2508
(408) 378-5900

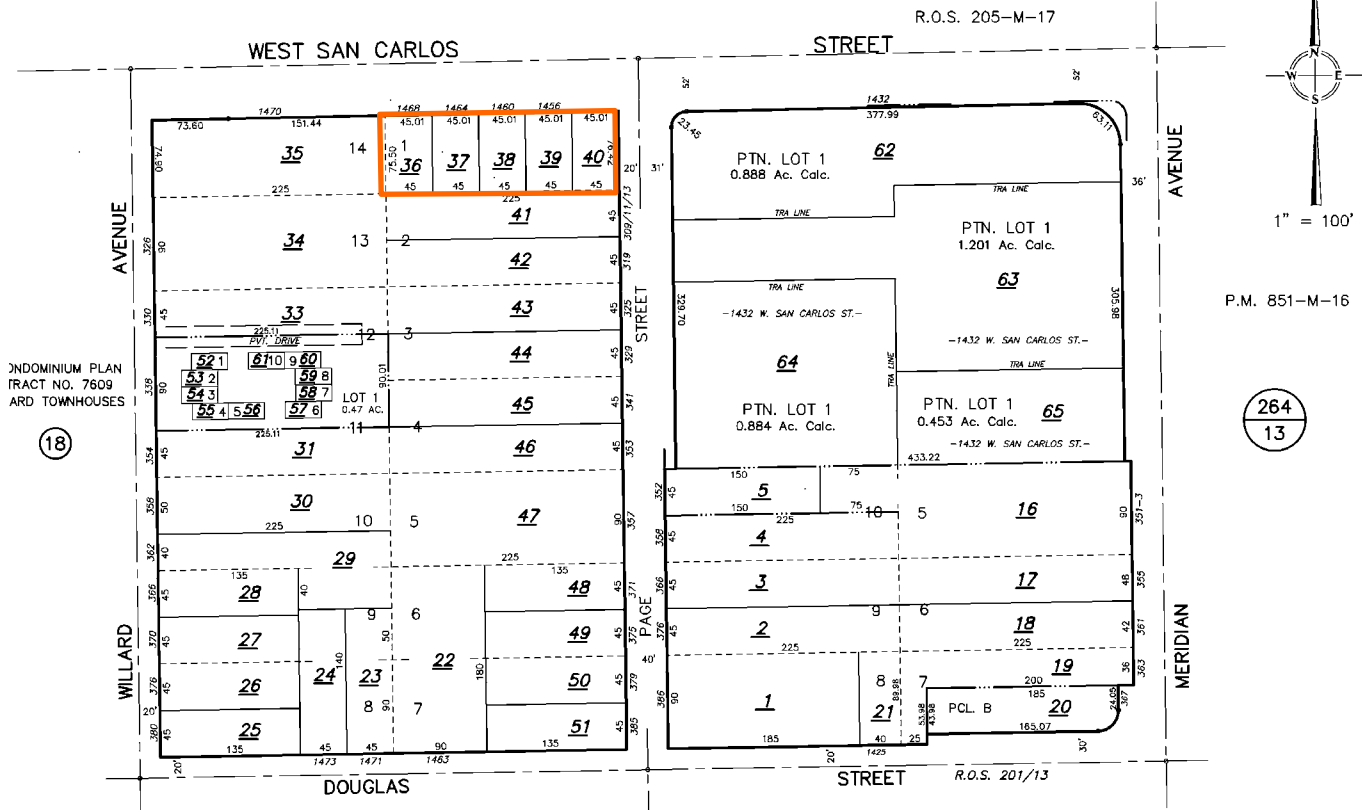
1456 W. San Carlos Street • San Jose, California



OFFICE OF

BOOK 277 PAGE 20

274
14



CONDOMINIUM PLAN
TRACT NO. 7609
ARD TOWNHOUSES

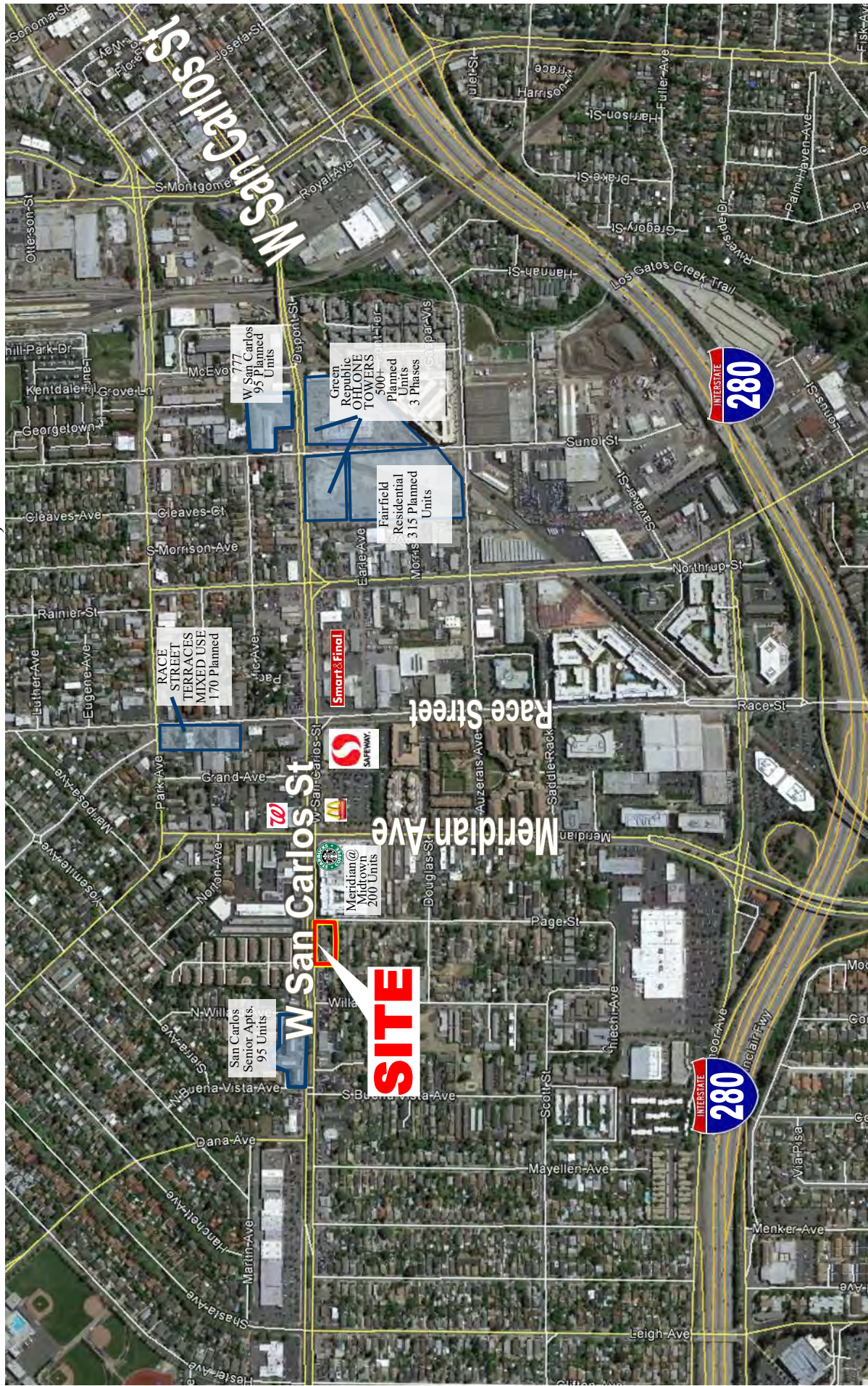
18

264
13

MEACHAM/OPPENHEIMER, INC.
CORFAC INTERNATIONAL
 8 No. San Pedro St., Suite 300
 San Jose, California 95110
 Tel: 408.378.5900
 www.moinc.net

David Taxin
 Lic. #00983163
dtaxin@moinc.net
 (408) 477-2508
 (408) 378-5900

1456 W. San Carlos Street • San Jose, California



MEACHAM/OPPENHEIMER, INC.
CORFAC INTERNATIONAL
 8 No. San Pedro St., Suite 300
 San Jose, California 95110
 Tel: 408.378.5900
www.moinc.net

David Taxin
 Lic. #00983163
dtaxin@moinc.net
 (408) 477-2508
 (408) 378-5900

The information contained herein has been obtained from sources we deem reliable. We cannot, however, assume responsibility for its accuracy.