



**OFFICE  
SPACE  
FOR LEASE**

# 127 BELLEVUE WAY

127 Bellevue Way SE, Bellevue, WA 98004

ROBERT MESSMER, CCIM  
425.458.3902 | 206.948.1577 (c)  
rmessmer@rgmcommercial.com

JENNIFER HEYL  
425.458.3908  
jennifer@rgmcommercial.com

10423 Main Street #5, Bellevue, WA 98004  
425.452.3052 | rgmcommercial.com





**Prime Downtown Bellevue office space available for lease**

<b>Suite 100</b>	1,366 SF
<b>Bldg Rental Rate</b>	\$32.00 per SF NNN (2024 Est. \$12.89/SF)
<b>Suite Details</b>	Suite has 4 private offices, a kitchenette, storage area & open work space
<b>Signage</b>	Prominent monument signage on Bellevue Way
<b>Stories</b>	2 stories of office; 1 story of covered parking
<b>Parking</b>	Free surface parking; 3.5   1,000 SF
<b>Year Built</b>	1985
<b>Building Upgrades</b>	Significant exterior & interior upgrades in 2021 & 2022
<b>Communication/ Fiber</b>	CenturyLink Business & CenturyLink Fiber
<b>Amenities</b>	Within steps of bus line & Old Bellevue's wide variety of restaurants & boutique shops on Main Street. Minutes away from all that DT Bellevue has to offer & a short walk to the future DT Bellevue Link light rail station opening in 2023







ROBERT MESSMER, CCIM  
 425.458.3902 | 206.948.1577 (c)  
 rmessmer@rgmcommercial.com

JENNIFER HEYL  
 425.452.458.3908  
 jennifer@rgmcommercial.com

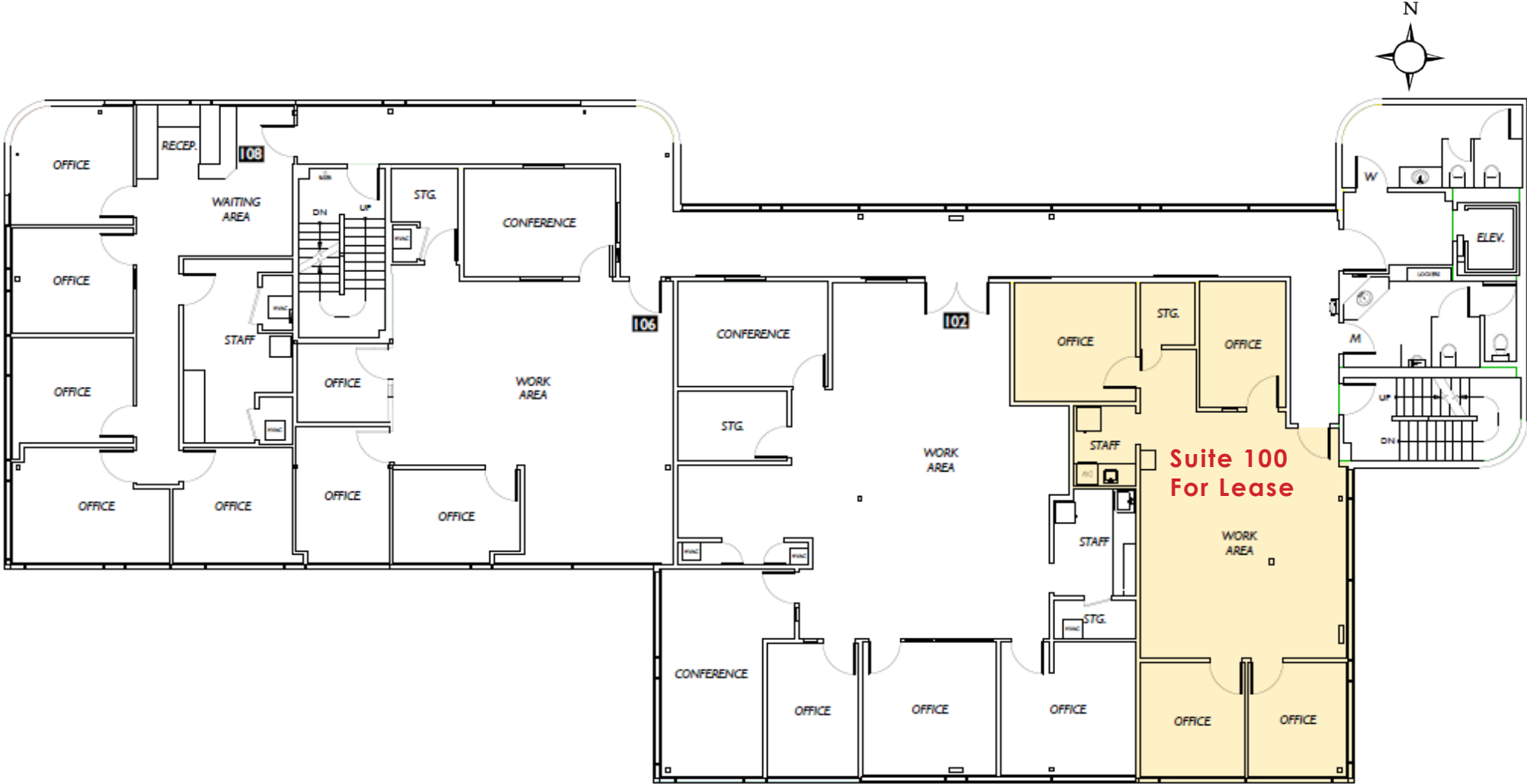
425.452.3052 | rgmcommercial.com

The information contained herein has been received from sources we deem reliable. While we have no reason to doubt its accuracy, we do not guarantee it. You are advised to independently verify all information.





# FULL FLOOR PLAN



ROBERT MESSMER, CCIM  
425.458.3902 | 206.948.1577 (c)  
rmessmer@rgmcommercial.com

JENNIFER HEYL  
425.458.3908  
jennifer@rgmcommercial.com

425.452.3052 | rgmcommercial.com

The information contained herein has been received from sources we deem reliable. While we have no reason to doubt its accuracy, we do not guarantee it. You are advised to independently verify all information.





