

OFFICE SPACE FOR LEASE



351 COLUMBIA MEMORIAL PARKWAY • KEMAH, TX 77565

Available September 1st at our Columbia Memorial Parkway Business Park, Suite C2-1!

Suite C2-1 is 850 total square feet of office space. There is a reception office in the front, a private office, and a work room/conference room in the back. There is also a private bathroom. The offices are all air conditioned and the suite is in great condition. There is free parking directly in front of your suite. No need to walk 10 minutes to get from your car to your office.

Whether you are a plumber, general contractor, or if you are looking for a store for your online business, this suite is perfect for any type of small business. Whether you are looking to get more office space for your business, or downsize from a larger office to a more efficient set up, Suite C2-1 can fit all of your needs.

You will not find better prices for office space that is well maintained in the area!

- Property Taxes-INCLUDED
- Water & Sewer-INCLUDED
- Yard Maintenance-INCLUDED
- Trash/Dumpster-INCLUDED
- High-Speed Internet-AVAILABLE
- Professionally Managed

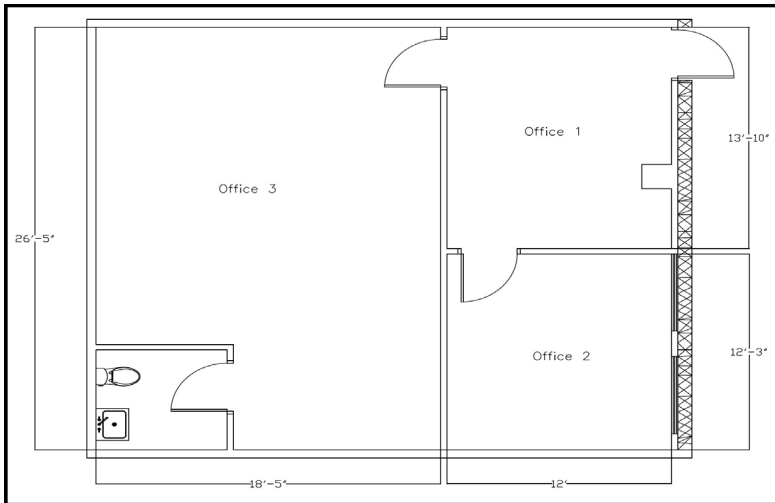


Matthew Lawrence
16023 Rudgevic Ln | Spring, TX 77379
Property@wjl.me
www.lonestardevelopment.me

Call us today!

281.401.9777

850 SF SUITE FOR LEASE



OFFICE WAREHOUSE

351 COLUMBIA MEMORIAL PKW • KEMAH, TX 77565

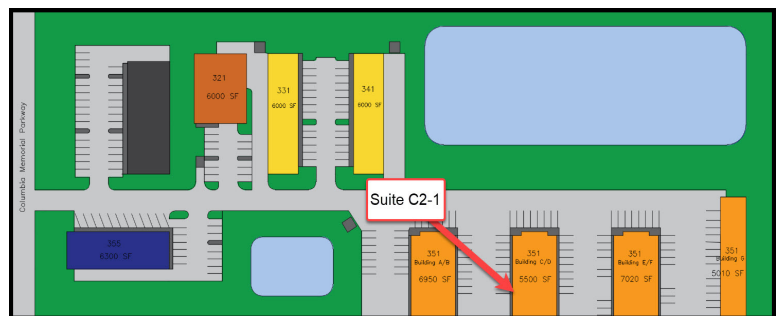
SUITE NAME SUITE C2-1

BASE RENT \$1,200

TOTAL SQUARE FOOTAGE 850 SF

TOTAL OFFICE SQUARE FOOTAGE 850 SF

TOTAL WAREHOUSE SQUARE FOOTAGE 0 SF



Matthew Lawrence
16023 Rudgevic Ln | Spring, TX 77379
Property@wjl.me
www.lonestardevelopment.me

Call us today!

281.401.9777