

# THE TOWER

## STAR CAMPUS



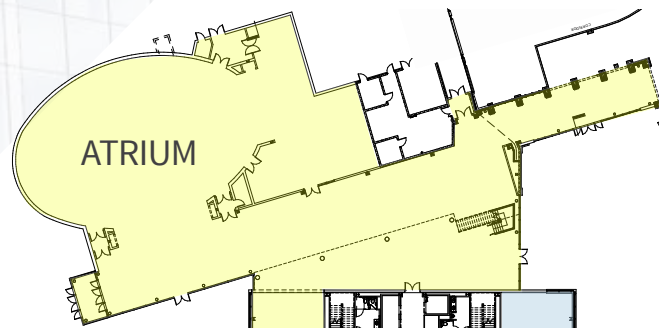
Prime  
Location

### AMENITY AVAILABILITIES

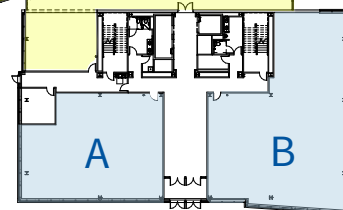
- First floor suites - 2,700 square feet and 3,800 square feet
- Suites divisible to approximately 1,500 square feet
- Health Sciences Complex current daytime population 1,700
- Over 632,000 square feet of anticipated additional new development will increase the campus population
- Approximately 45% projected growth of student and faculty by 2018
- 1 mile to Newark's Main Street and 1.5 miles to the I-95 Interchange

### FIRST FLOOR

Building connection  
to Phase I & II



### AMENITY SPACES A & B:



2,700 s.f. 3,800 s.f.

JAMIE VARI  
+1 302 356 2862  
jamie.vari@am.jll.com

BLAISE FLETCHER  
+1 302 356 2861  
blaise.fletcher@am.jll.com

JLL | Jones Lang LaSalle  
222 Delaware Avenue, Suite 1610  
Wilmington, DE 19801  
T +1 302 356 2858 | [www.jll.com/philadelphia](http://www.jll.com/philadelphia)



DELLE DONNE  
&  
ASSOCIATES