

RETAIL SPACE FOR LEASE

CARLISLE CENTER

500 CENTRAL AVENUE, CARLISLE, OH 45005

RETAIL



PROPERTY FEATURES

- + Available: 800 - 16,000 sq. ft.
- + \$8.00 - \$10.00 per sq. ft. NNN
- + Easy access and parking
- + Retailers within the center: Dollar General, Dairy Queen, Simply Brown Salon-Tanning and Nails, Carlisle Dental Center and Fu Lin Chinese Restaurant
- + Area retailers include: Walmart, CVS, UPS Store, Goodyear Gemini Auto and Tire, Subway, Long John Silver's and National Bank & Trust



CONTACT US

MEGAN FAIR

Associate
+1 513 369 1345
megan.fair@cbre.com

www.cbre.us

CBRE

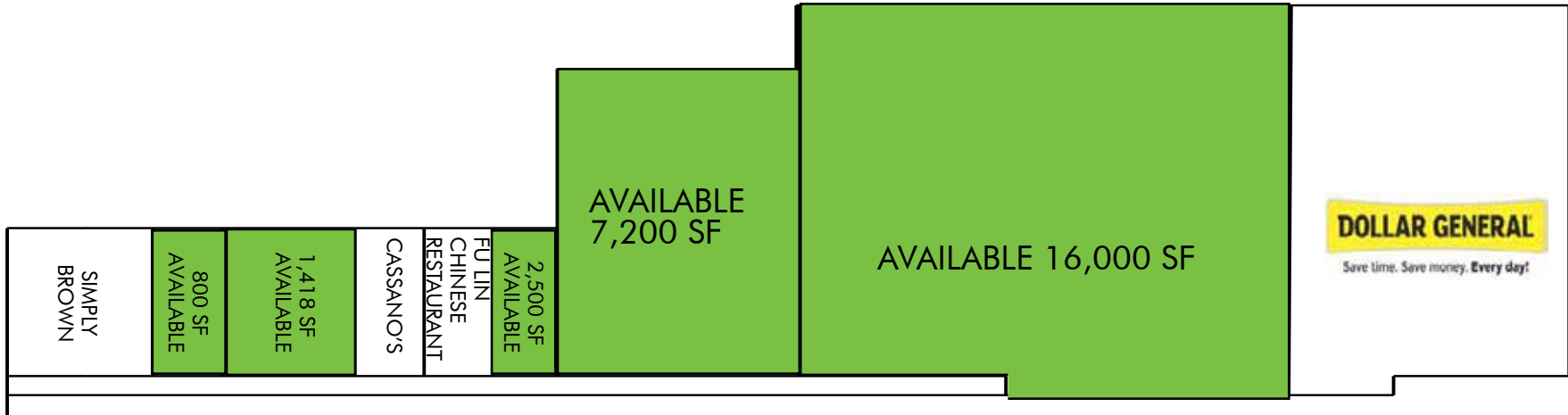
RETAIL SPACE FOR LEASE

CARLISLE CENTER

500 CENTRAL AVENUE, CARLISLE, OH 45005

RETAIL

SITE PLAN



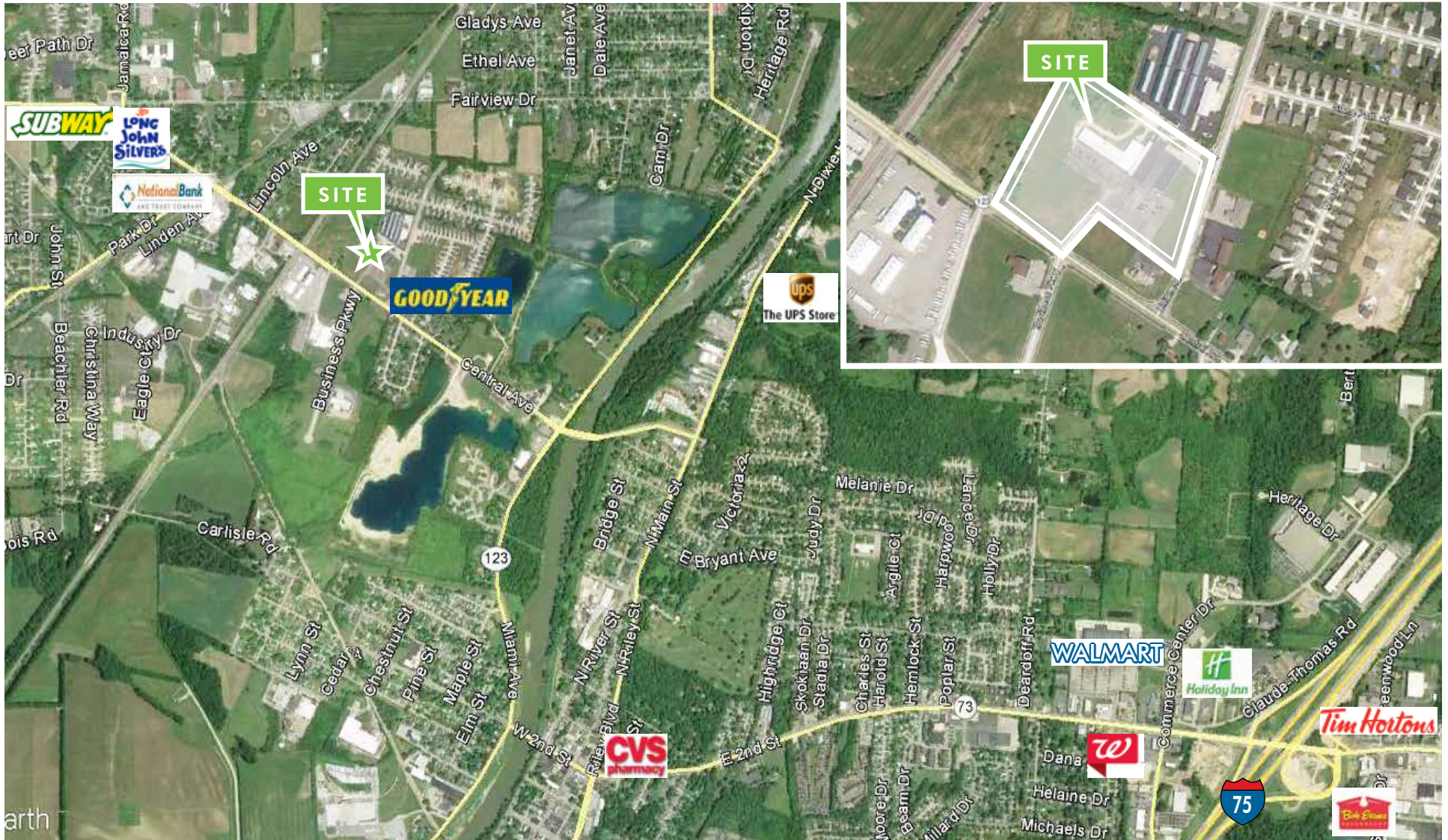
RETAIL SPACE FOR LEASE

CARLISLE CENTER

500 CENTRAL AVENUE, CARLISLE, OH 45005

RETAIL

AERIAL MAP



© 2017 CBRE, Inc. This information has been obtained from sources believed reliable. We have not verified it and make no guarantee, warranty or representation about it. Any projections, opinions, assumptions or estimates used are for example only and do not represent the current or future performance of the property. You and your advisors should conduct a careful, independent investigation of the property to determine to your satisfaction the suitability of the property for your needs. Photos herein are the property of their respective owners and use of these images without the express written consent of the owner is prohibited. CBRE and the CBRE logo are service marks of CBRE, Inc. and/or its affiliated or related companies in the United States and other countries. All other marks displayed on this document are the property of their respective owners.

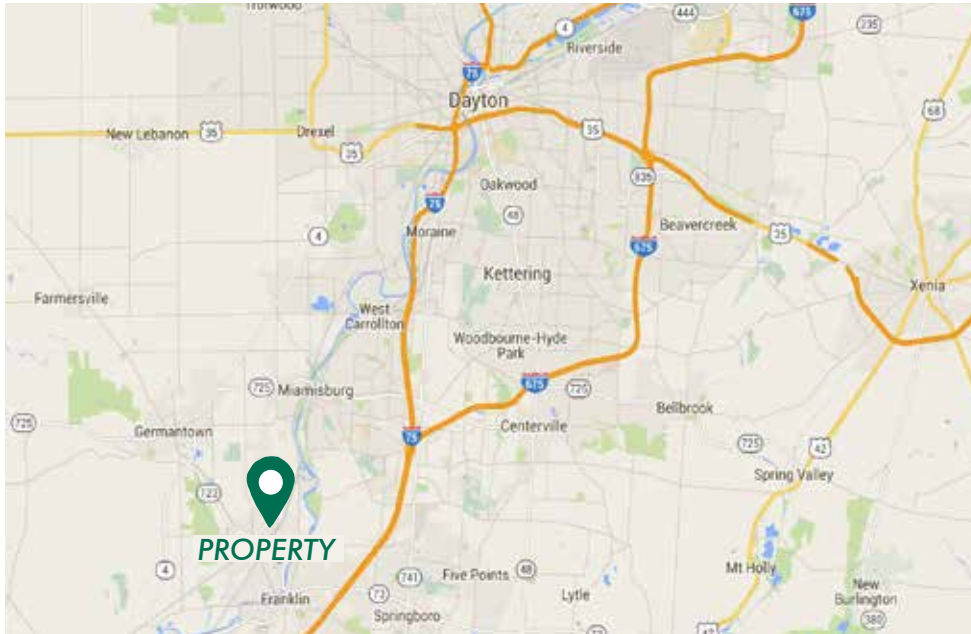
RETAIL SPACE FOR LEASE

CARLISLE CENTER

500 CENTRAL AVENUE, CARLISLE, OH 45005

RETAIL

LOCATION MAP



DEMOGRAPHICS

	1 MILE	3 MILE	5 MILE
2016 Estimated Population	3,481	20,043	74,192
2016 Estimated Household Income	\$60,444	\$60,843	\$68,815

CONTACT US

MEGAN FAIR

Associate
+1 513 369 1345
megan.fair@cbre.com

www.cbre.us

CBRE