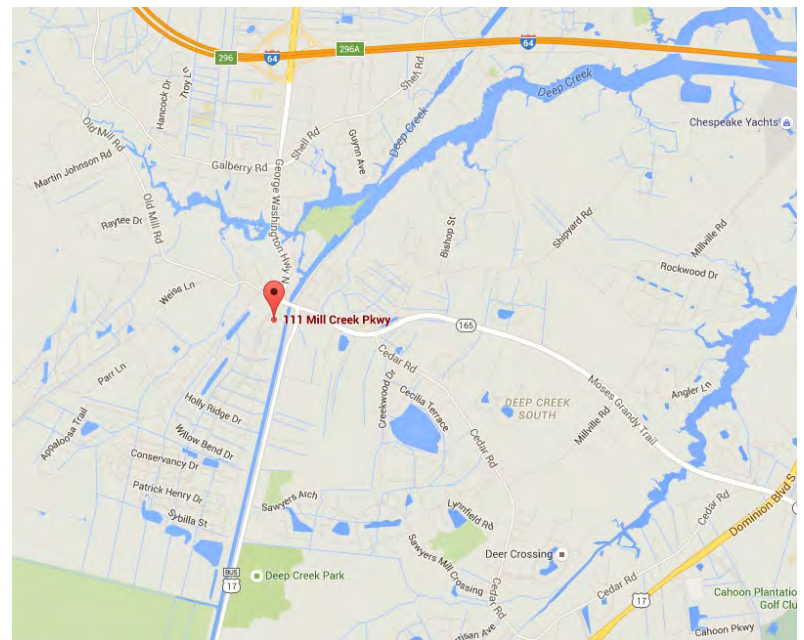




Property Features

- 1st Floor – 1,345 SF
- 3rd Floor - 2,099 SF
- Lease Rate: \$14.50 SF plus \$1.50 CAM
- Three-story brick building with atrium
- Amenities: Canopy for loading and unloading passengers
- Located in the Deep Creek section of Chesapeake, one of the city's fastest growing boroughs
- Easy access to Cedar Road, George Washington Highway and I-64

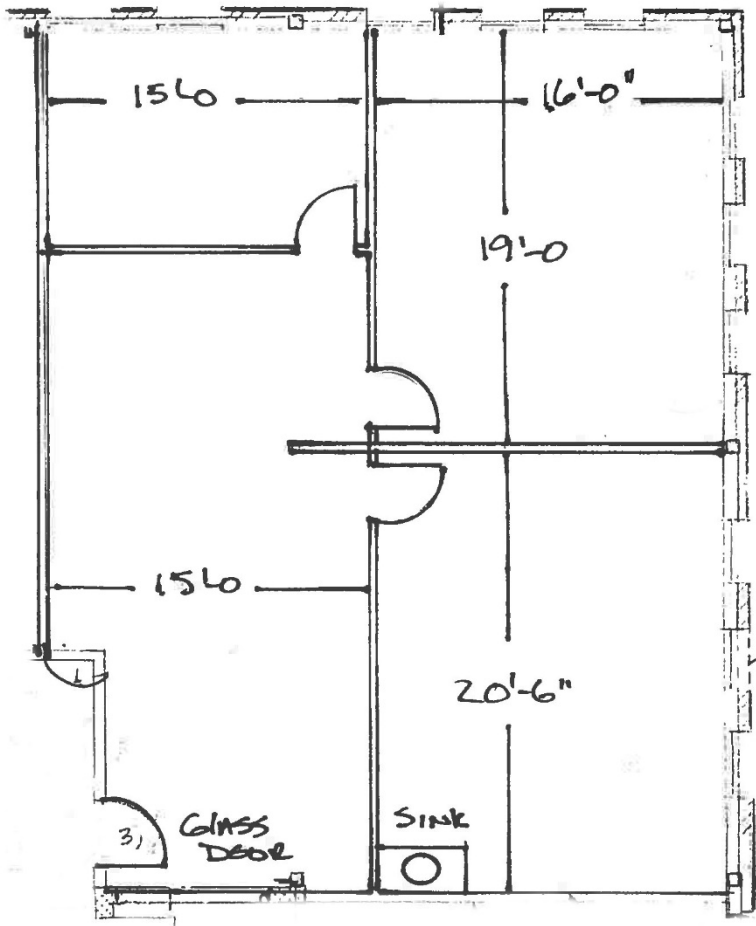


For more information, contact:

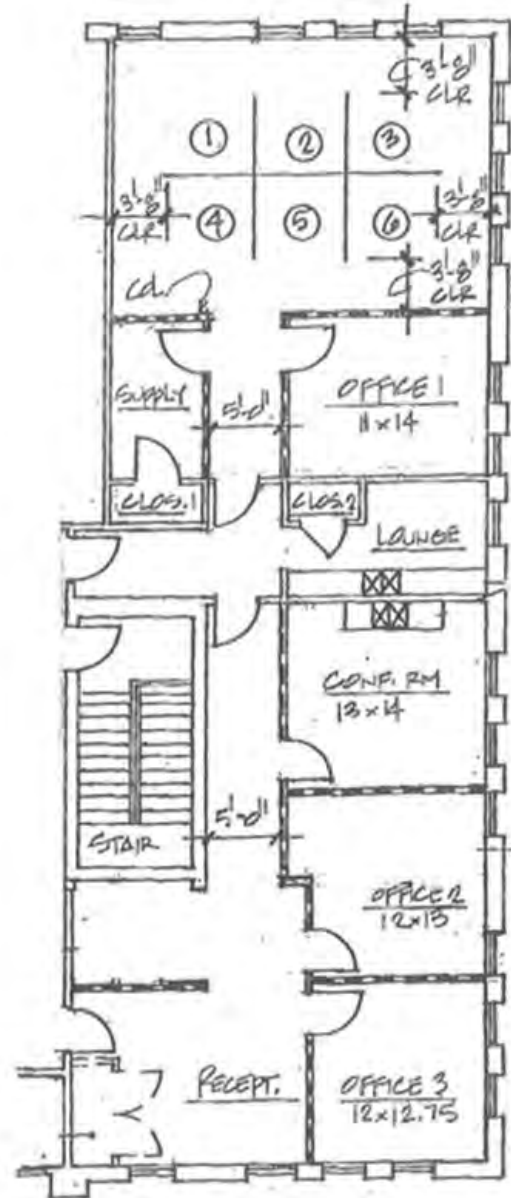
CHRISTINE KAEMPFE, CCIM
Vice President
757 499 1384
christine.kaempfe@thalhimer.com

The Town Center of Virginia Beach
222 Central Park Ave., Suite 1500
Virginia Beach, VA 23462
www.thalhimer.com

First Floor | +/-1,345 SF



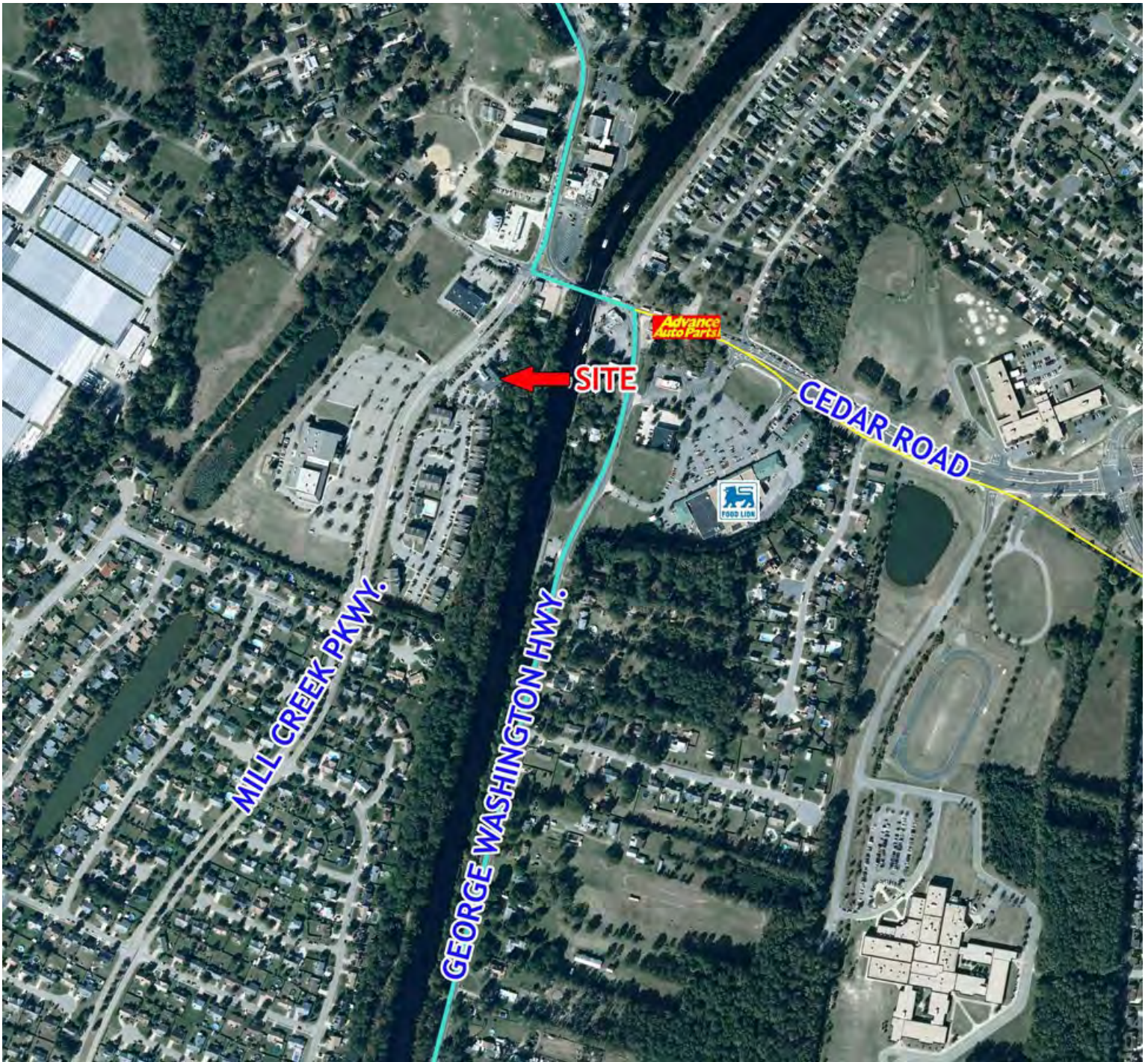
Third Floor | +/-2,099 SF



For more information, contact:

CHRISTINE KAEMPFE, CCIM
 Vice President
 757 499 1384
 christine.kaempfe@thalhimer.com

The Town Center of Virginia Beach
 222 Central Park Ave., Suite 1500
 Virginia Beach, VA 23462
 www.thalhimer.com



For more information, contact:

CHRISTINE KAEMPFE, CCIM
Vice President
757 499 1384
christine.kaempfe@thalhimer.com

The Town Center of Virginia Beach
222 Central Park Ave., Suite 1500
Virginia Beach, VA 23462
www.thalhimer.com