



# “Downtown Robbinsville”

Route 33 and Robbinsville Edinburg Road, Robbinsville, New Jersey

## Availabilities

- +/- 972 SF
- +/- 1,063 SF
- +/- 1,107 SF

## Co-Tenants

- Capital Health
- De Lorenzo's Tomato Pies
- Dolce & Clemente's Italian Market
- H&R Block
- LabCorp
- The Malvern School
- Rite Aid
- Starbucks
- Tacorito

## Traffic Counts

- 19,068 VPD

## Demographics

Radius	Population	Total Daytime Population	Median HH Income
1 Mile	8,097	8,699	\$117,251
3 Mile	36,795	42,573	\$97,746
5 Mile	100,324	103,169	\$87,801

## Retail for Lease - Contact

Jason Pierson  
Ph. 732-707-6900 x1  
jason@piersonre.com

Gregg Medvin  
Ph. 732-707-6900 x3  
gregg@piersonre.com

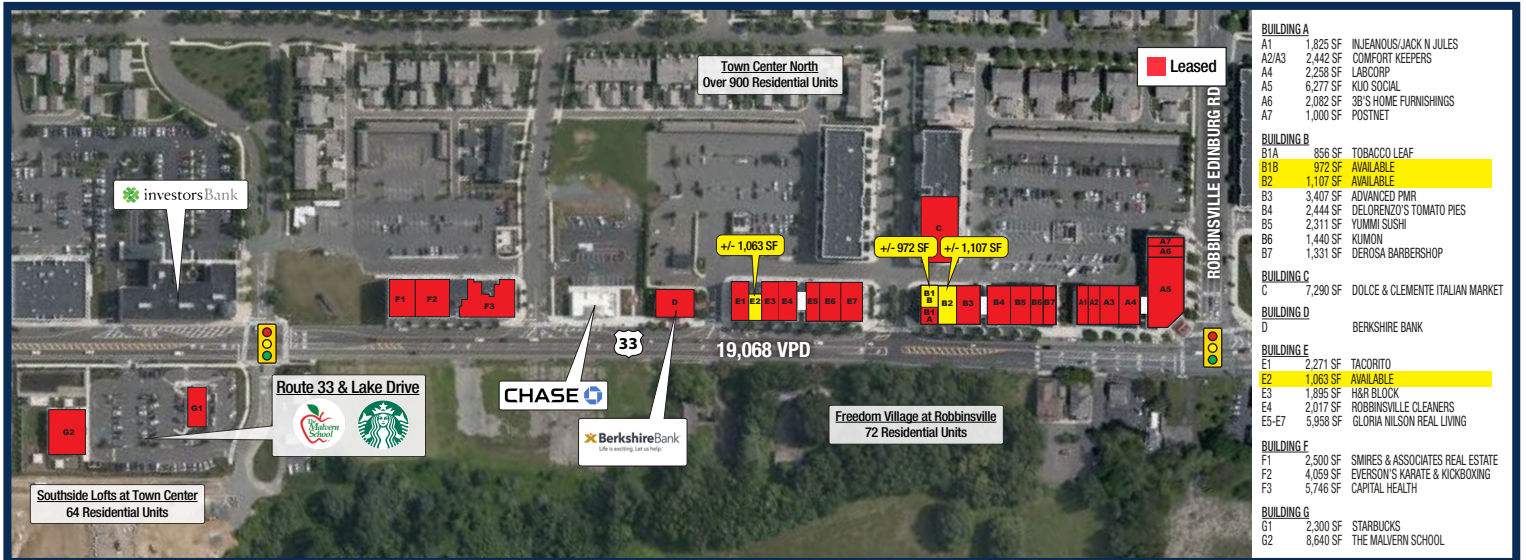
**PIERSON**  
COMMERCIAL REAL ESTATE®

# “Downtown Robbinsville”

Route 33 and Robbinsville Edinburg Road, Robbinsville, New Jersey

## Site Description

- Mixed-use residential and retail development in Robbinsville’s exciting downtown consisting of over 900 residential units and over 220,000 SF of retail and office space
- Prominent visibility/frontage situated on Route 33 at signalized intersections with back-access to residential community
- Situated in the heart of Robbinsville’s residential and commercial zone
- En route to New Jersey Turnpike, I-195 and Route 130



## Retail for Lease - Contact

Jason Pierson  
Ph. 732-707-6900 x1  
jason@piersonre.com

Gregg Medvin  
Ph. 732-707-6900 x3  
gregg@piersonre.com

**PIERSON**  
COMMERCIAL REAL ESTATE®