

1201

BIG TOWN BLVD.
DALLAS, TX
75227

BUILDING FEATURES

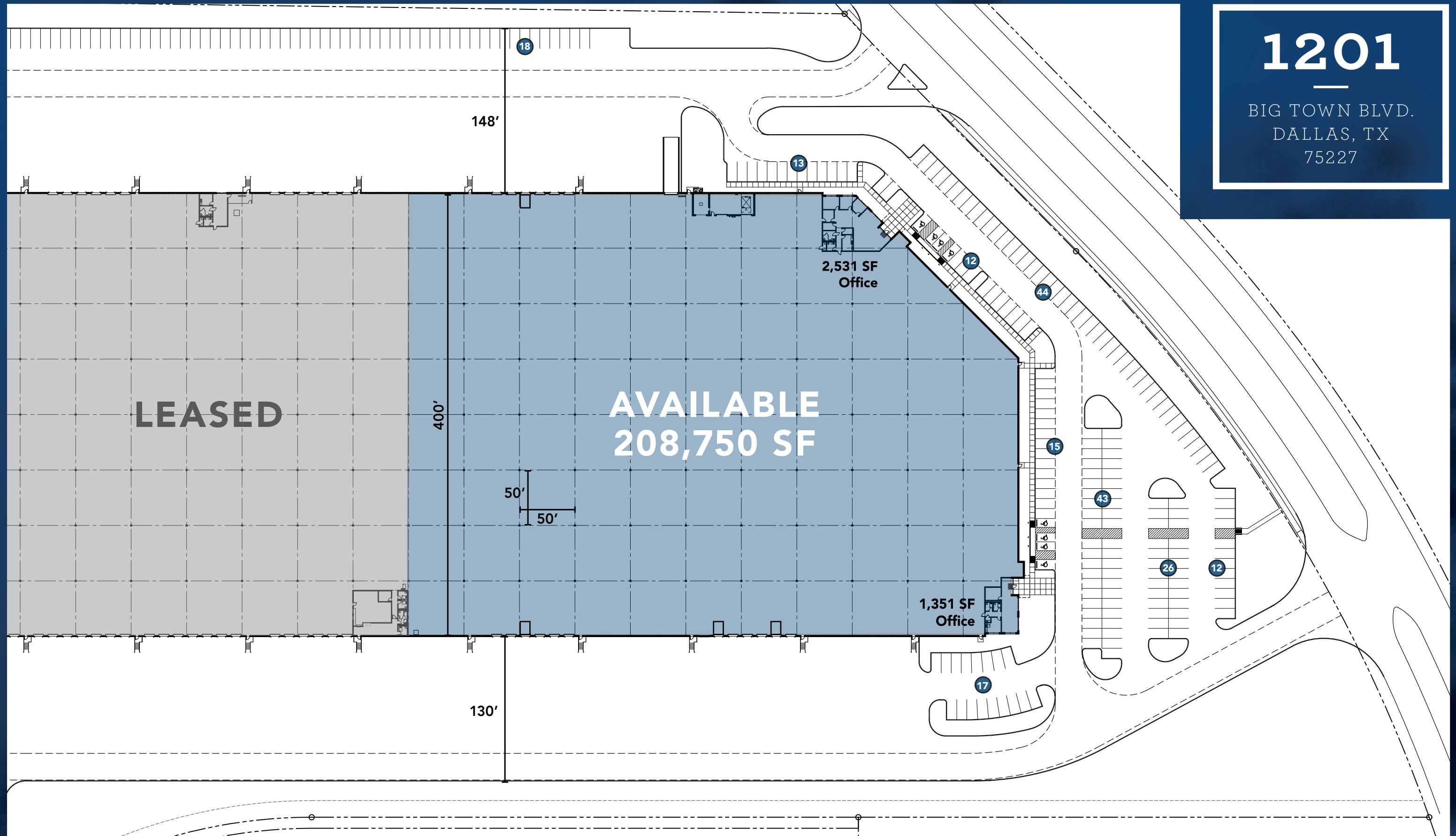
208,750 SF Available
Divisible to 98,750 SF
Cross-Dock Configuration
3,882 SF Office Space Available
50' x 50' Column Spacing
(18) 9' x 10' Dock High Doors
(Expandable to 45)

(4) Levelers (Expandable)
32' Clear Height
(1) 12' x 12' Drive In Door
1,157 SF Maintenance Bay
200 Striped Car Parks
400' Building Depth
130' - 148' Truck Court Depths

T-5 Lighting on Motion Sensors
Marquee Signage Available
ESFR Fire Sprinklers
480v 3 Phase Power
Food Grade Facility
2007 Construction

1201

BIG TOWN BLVD.
DALLAS, TX
75227



MATT DORNAK
214.267.0461
mdornak@streamrealty.com

RYAN WOLCOTT
214.267.0412
rwolcott@streamrealty.com

CANNON GREEN
214.560.5096
cgreen@streamrealty.com





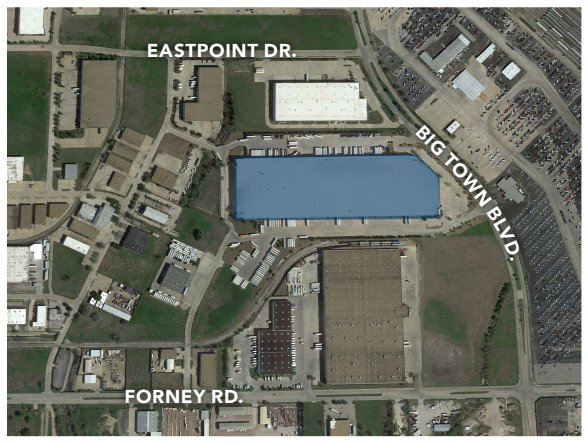
1201

BIG TOWN BLVD.
DALLAS, TX
75227






DISTANCE TO:

-  3.6 Miles
-  9.2 Miles
-  1.6 Miles
-  1.1 Miles



DISTANCE TO:

- 
FEDEX GROUND
1.4 Miles
Last pick up time: 6:00PM
- 
UPS GROUND
1.1 Miles
Last pick up time: 7:00PM
- 
UP INTERMODAL
0.7 Miles

LOCATION HIGHLIGHTS

- Triple Freeport Inventory tax incentive
- Located in Dallas County
- Located within the city of Dallas
- Close proximity to Union Pacific Intermodal
- Outstanding labor and transportation infrastructure
- Direct access to Highway I-30, I-635, Hwy 80



MATT DORNAK
214.267.0461
mdornak@streamrealty.com

RYAN WOLCOTT
214.267.0412
rwolcott@streamrealty.com

CANNON GREEN
214.560.5096
cgreen@streamrealty.com