

Shoppes of Fairview

Retail Space for Lease



4345 Edgewater Drive,
Orlando, FL 32804

Property Details:

Total Space Available	2,830 SF
Rental Rate	Negotiable
Property Type	Retail
Building Size	17,094 SF
Lease Type	NNN
Zoned	C-2

Spaces:

Suite	Space Available	Price	Date Available	Description
800	2,830 SF	Negotiable	7/1/18	Retail

Location Description:

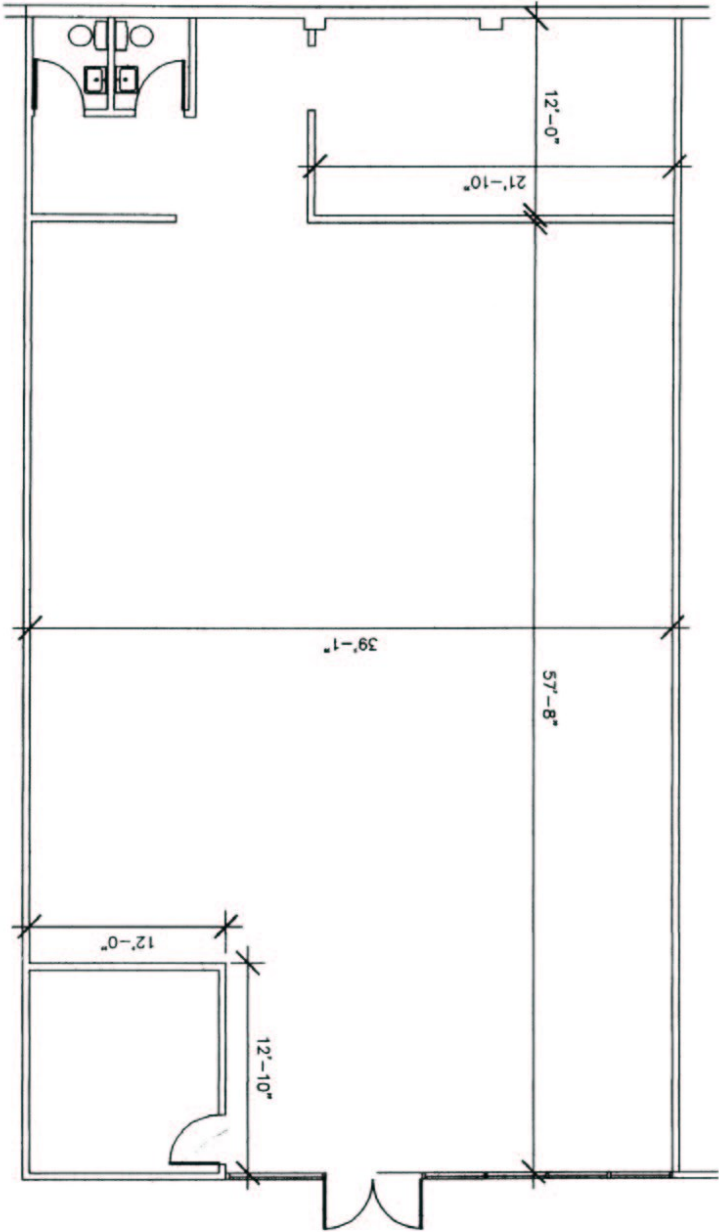
- Excellent location (Corner of Edgewater Ave & Fairbanks Ave)
- Pylon signage available
- Easy access downtown Orlando, Maitland & Winter Park
- Close proximity to I-4
- 21,500 cars on Fairbanks Ave., 23,500 cars on Edgewater Ave.
- Ample parking
- Mix of national and local tenants



Commercial Sales & Leasing | Property Management | Project Development | Acquisitions & Dispositions | Construction Services

Southeastern Realty Group, Inc.—933 Lee Road Suite 400—Orlando, FL 32810—t: 407-629-5595—f: 407-645-2035

Floor Plan:



Suite 800
2,830 SF

Southeastern Realty Group
933 Lee Road, Suite 400, Orlando, Florida 32810
407-629-5595 phone, 407-645-2035 fax
Visit our website at www.southeasternrealty.com