

FOR LEASE

# 924 Howell Retail Space

924 HOWELL STREET | SEATTLE, WA 98101

RETAIL



## PROPERTY INFO

- + 1,232 SF
- + Restaurant or retail space located in the Residence Inn by Marriott with entrance on Howell Street
- + Delivers Fall 2017
- + Centrally located in the rapidly changing Denny Triangle with excellent access to I-5, and one block from the Convention Place Station with access to King County Metro buses and Link light rail
- + Over 72,000 employees within a half mile
- + Significant day and night population within a few blocks

[www.cbre.com/seattle](http://www.cbre.com/seattle)

**CBRE**

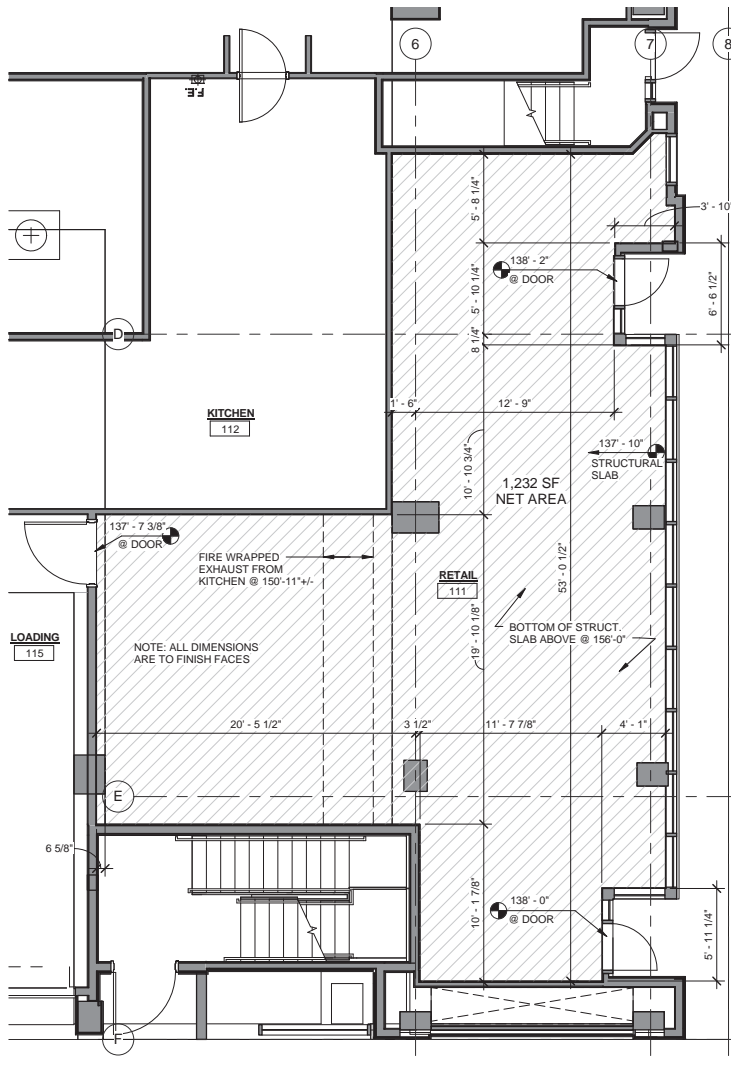
FOR LEASE

# 924 Howell Retail Space

924 HOWELL STREET | SEATTLE, WA 98101

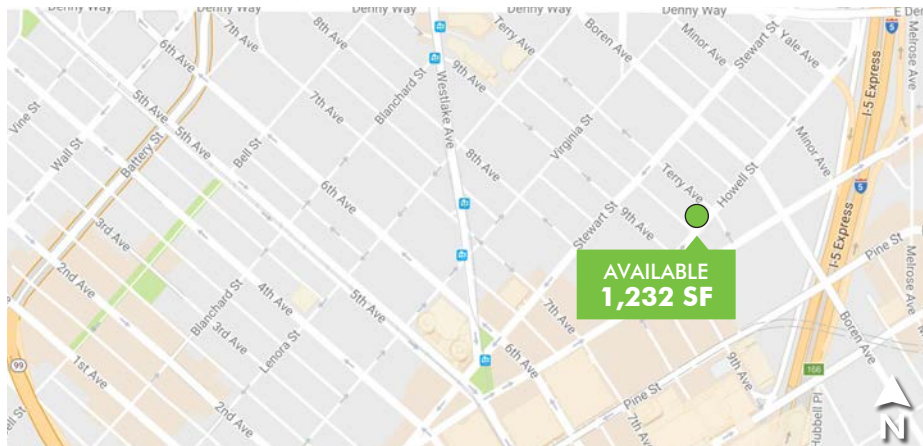


## SITE PLAN





## DEMOGRAPHICS



### 2016 Demographics (Est.)

	0.5 Mile Radius	1 Mile Radius	3 Mile Radius
Population	20,341	69,933	209,448
Total Employees	72,128	194,360	331,470
Number of Households	14,028	44,652	111,726
Average Household Income	\$71,598	\$78,519	\$95,248



hotel bar patio

FOR LEASE

# 924 Howell Retail Space

924 HOWELL STREET | SEATTLE, WA 98101

RETAIL



\*Information regarding Amazon.com, Google, Microsoft, and Starbucks locations and future plans sourced from Puget Sound Business Journal and Seattle Times reporting.

## CONTACT US

### SUSIE DETMER

Senior Vice President  
+1 206 292 6040  
susie.detmer@cbre.com

### STACY REID

Vice President  
+1 206 292 6034  
stacy.reid@cbre.com

CBRE, Inc.

1420 5th Avenue  
Suite 1700  
Seattle, WA 98101

© 2017 CBRE, Inc. This information has been obtained from sources believed reliable. We have not verified it and make no guarantee, warranty or representation about it. Any projections, opinions, assumptions or estimates used are for example only and do not represent the current or future performance of the property. You and your advisors should conduct a careful, independent investigation of the property to determine to your satisfaction the suitability of the property for your needs. Photos herein are the property of their respective owners and use of these images without the express written consent of the owner is prohibited. CBRE and the CBRE logo are service marks of CBRE, Inc. and/or its affiliated or related companies in the United States and other countries. All other marks displayed on this document are the property of their respective owners. ejs 030317

[www.cbre.com/seattle](http://www.cbre.com/seattle)

**CBRE**