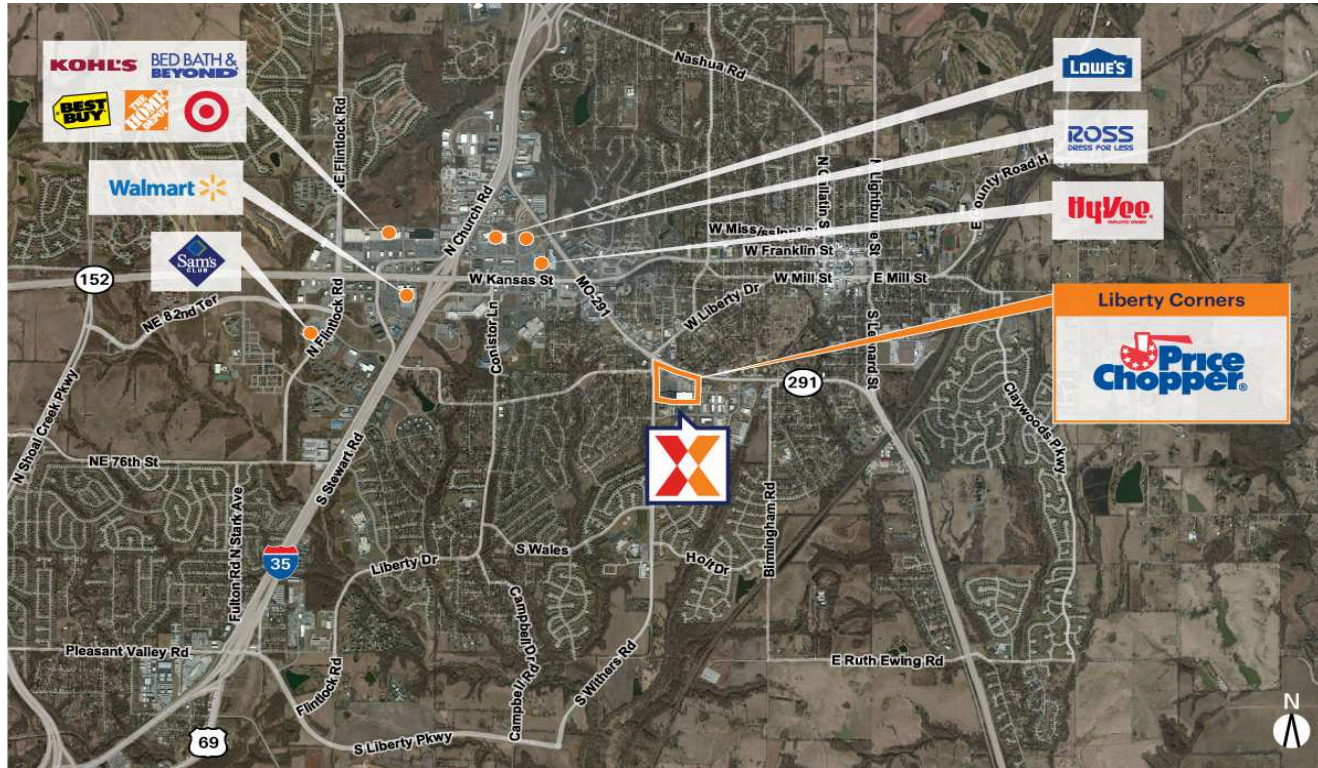


# Liberty Corners

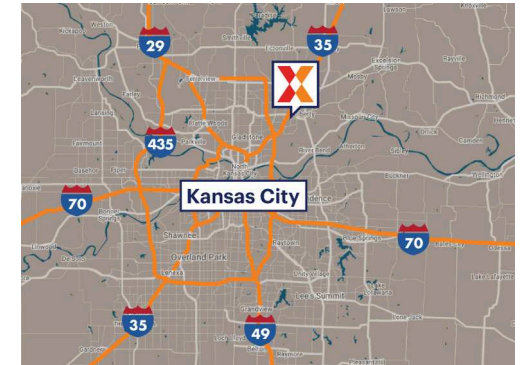
Kansas City, MO-KS

39.2363, -94.4349

840-916 South 291 Highway | Liberty, MO 64068-2296



Center Size: 124,808 SF



Demographics	1 Mile	3 Mile	5 Mile
	9,609	45,555	73,258
	3,806	16,664	26,806
	\$75,980	\$94,848	\$95,122

Surrounded by an affluent population with an average household income of \$95,000+ within 3 miles

Price Chopper-anchored center with national retailers including Dollar Tree, GNC, Great Clips & Sally Beauty Supply

Close proximity to Liberty Triangle, the major retail node in Liberty

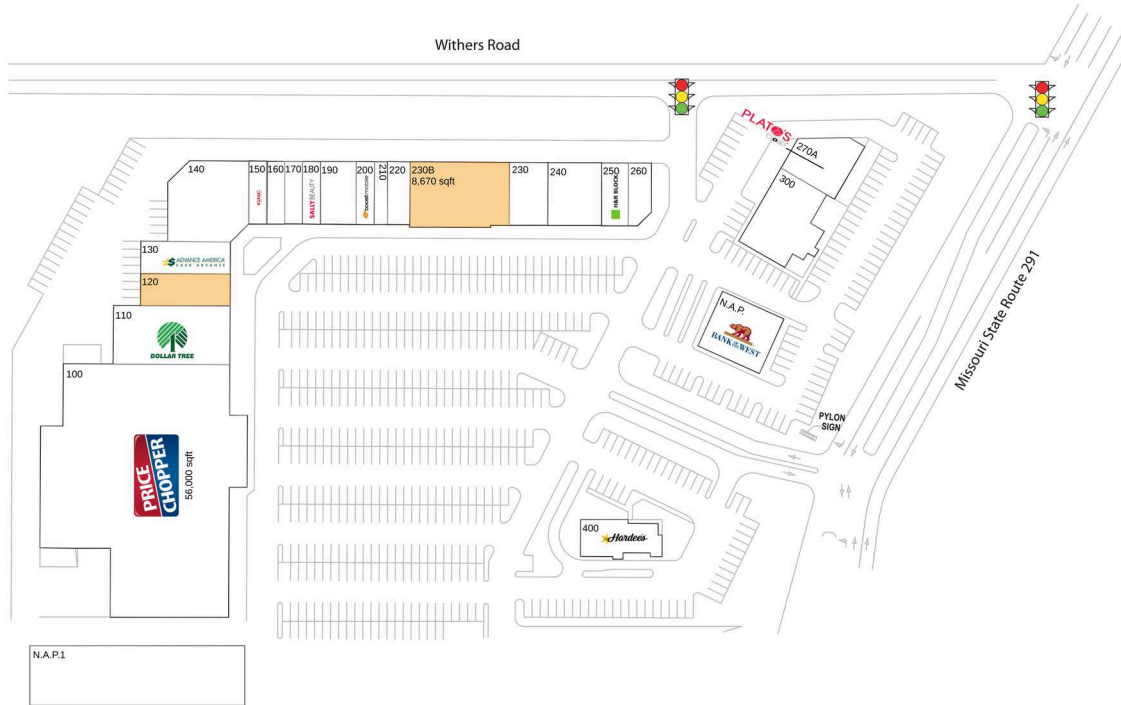
New façade renovations completed fall 2017

# Liberty Corners

Kansas City, MO-KS

39.2363, -94.4349

840-916 South 291 Highway | Liberty, MO 64068-2296



## Available Space

120	4,500 SF
230B	8,670 SF

## Current Retailers

N.A.P.	Bank Of The West	0 SF
N.A.P.1	Sutherland	0 SF
100	Price Chopper.	56,000 SF
110	Dollar Tree	8,450 SF
130	Advance America	2,700 SF
140	Woodchux	7,800 SF
150	GNC	1,400 SF
160	Great Clips	1,400 SF
170	\$4 Threads	1,400 SF
180	Sally Beauty Supply	1,400 SF
190	Go Pet Go	2,800 SF
200	Boost Mobile	1,400 SF
210	Beltone Hearing Aids	1,050 SF
220	Designer Nail And Spa	1,750 SF
230	Clean Laundry	2,100 SF
240	J&S Pizza	4,200 SF
250	H&R Block	2,100 SF
260	Biscari Brothers Bicycles	1,950 SF
270A	Plato's Closet	3,576 SF
300	The Big Biscuit	6,736 SF
400	Hardee's	3,426 SF