



KEW Industrial Park

3240 W. 71st Ave. Westminster, CO 80030

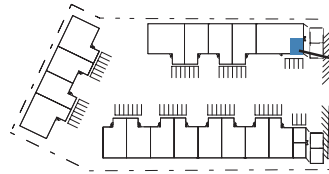
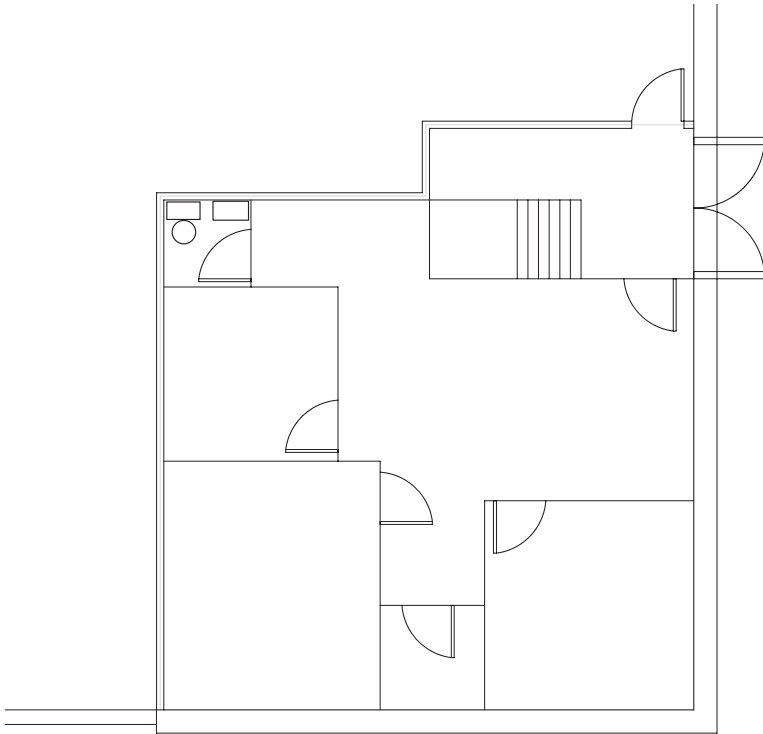
KEW
Realty Corporation

Office Suite for Lease

Unit 2 | 850 SF | \$700/month + utilities

PROPERTY DESCRIPTION

- Three private offices and restroom
- Off-street parking
- Located near RTD B-Line Light Rail Westminster Station
- Located within Adams County Enterprise Zone



UNIT 2
850 SF



PROPERTY DETAILS: KEW INDUSTRIAL PARK

Address: 3200 - 3240 W. 71st Ave
7015 - 7101 Julian St

City: Westminster

County: Adams

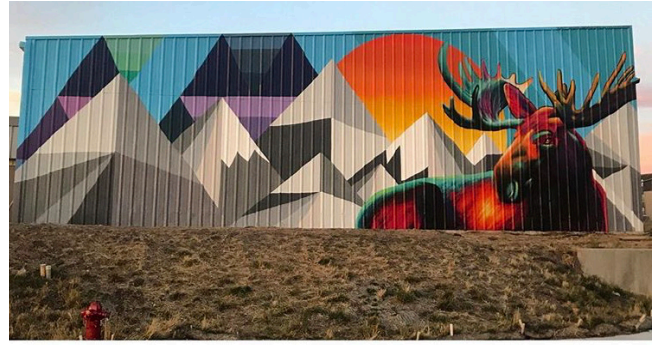
Building Size: 82,659 SF

Number of Buildings: 4

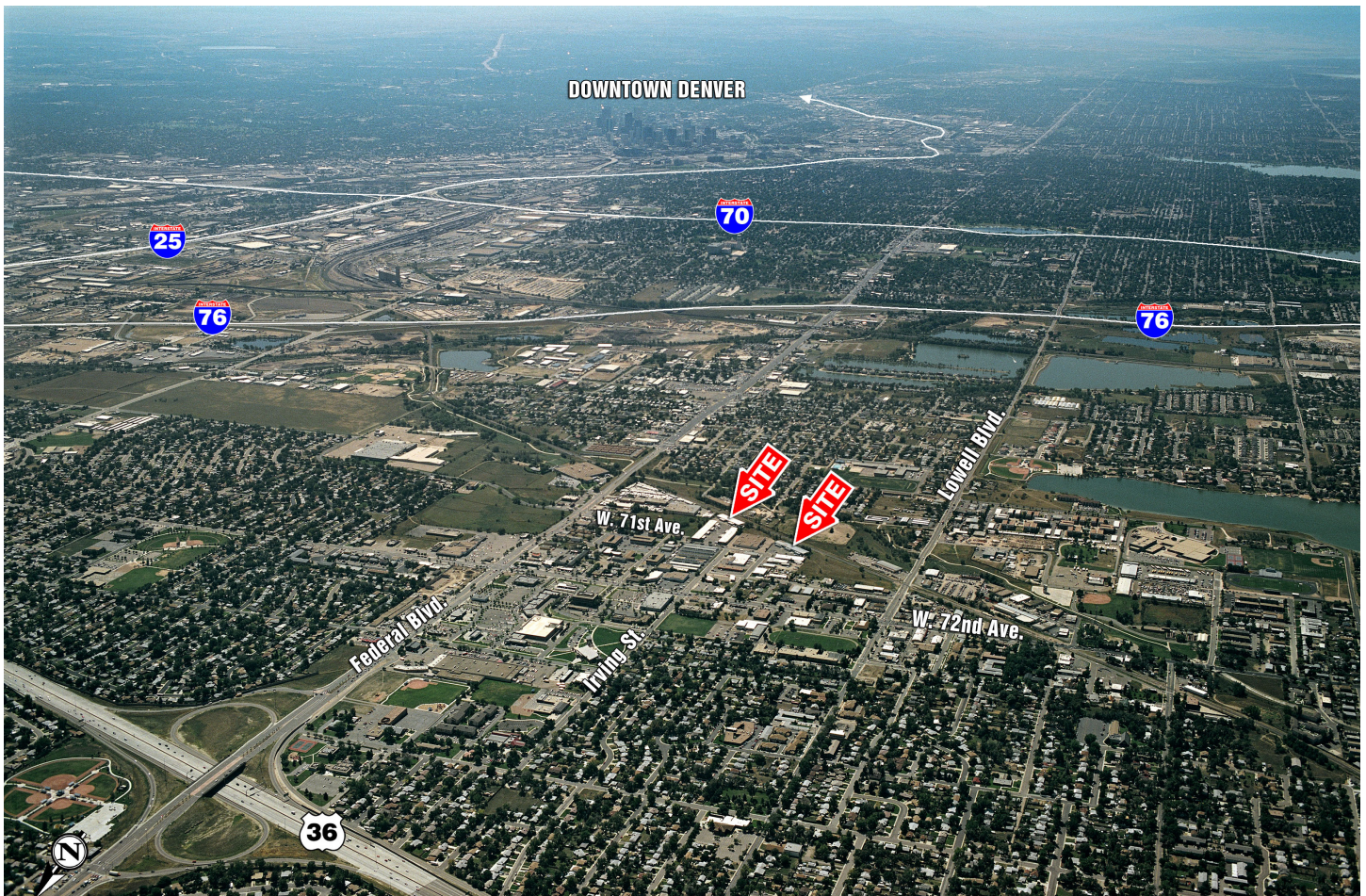
Year of Construction: 1974 & 1977

Owner: KEW Realty Corporation

Location: Central, Federal Blvd., exit off US-36, I-76, I-25. Located within an Adams County Enterprise Zone. Near RTD FasTracks commuter rail stop.



LOCATION



All information contained in this brochure, while not guaranteed, is obtained from sources deemed reliable. No representation is made as to the accuracy thereof and is submitted subject to errors, omissions, change of price, withdrawal or other conditions, without notice. It is the responsibility of either you or your agent to verify its accuracy.

Leasing Contacts | 303-329-8100
Joe Larkin | jlarkin@kewrealty.com
Blake Ham | bham@kewrealty.com

KEW
Realty Corporation