

FOR LEASE

 Carroll County, Maryland

1332 LONDONTOWN BOULEVARD

ELDERSBURG, MARYLAND 21784

AVAILABLE

Suite 117A:	2,020 sf	\$17/sf FS
Suite 117B:	5,008 sf	\$17/sf FS
Suite E:	465 sf*	
Suite 108F:	465 sf*	\$15/sf FS
*Contiguous up to 930 sf		
Suite 105:	3,900 sf	\$17/sf FS
Suite 108D:	1,500 sf**	\$17/sf FS
Suite 112:	850 sf**	\$17/sf FS
Suite 116:	2,288 sf**	\$17/sf FS
**Contiguous up to 4,638 sf		
Suite 205:	4,500 sf	\$17/sf FS
Suite 206:	8,800 sf	\$17/sf FS

BUILDING SIZE

373,728 sf

HIGHLIGHTS

- ▶ Newly renovated lobby, bathrooms, and common areas
- ▶ Close to major routes and amenities with great visibility and parking
- ▶ Hotel to be constructed in 2021 within walking distance
- ▶ Under new ownership



FOR LEASE

Carroll County, Maryland

AERIAL

1332 LONDONTOWN BOULEVARD | ELDERSBURG, MARYLAND 21784

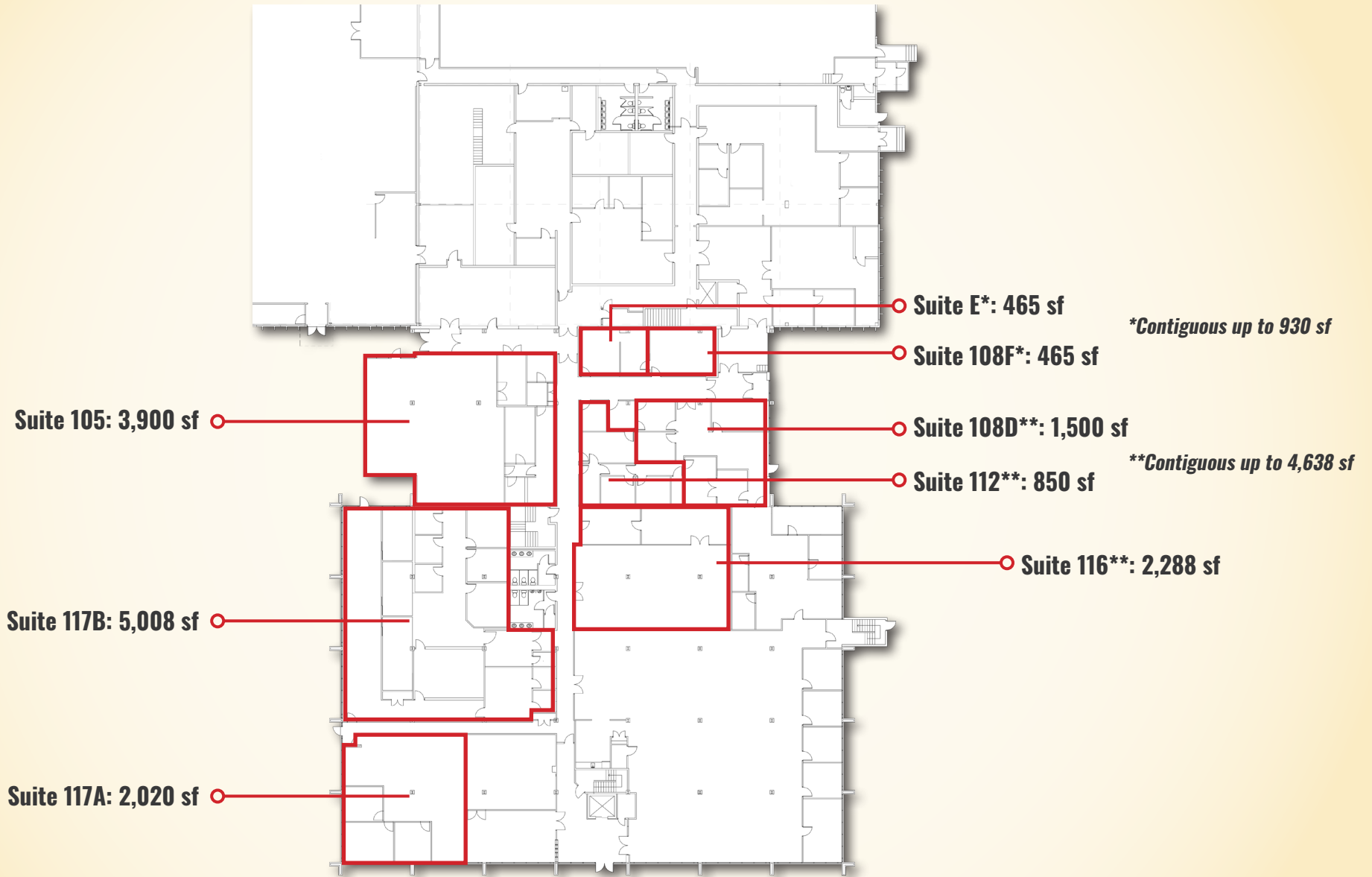


FOR LEASE

Carroll County, Maryland

FLOOR PLAN - FIRST FLOOR

1332 LONDONTOWN BOULEVARD | ELDERSBURG, MARYLAND 21784



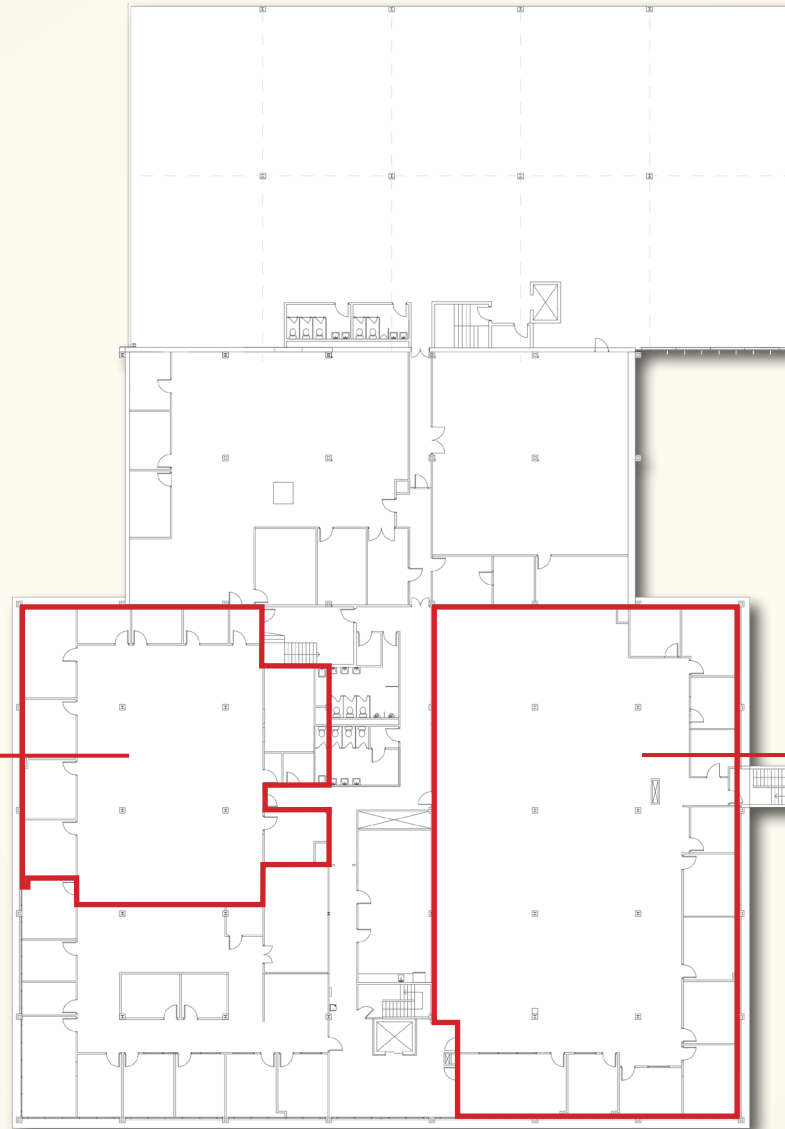
FOR LEASE

Carroll County, Maryland

FLOOR PLAN - SECOND FLOOR

1332 LONDONTOWN BOULEVARD | ELDERSBURG, MARYLAND 21784

Suite 205: 4,500 sf



Suite 206: 8,800 sf