

UNIVERSITY 191 COLLEGE REDEVELOPMENT

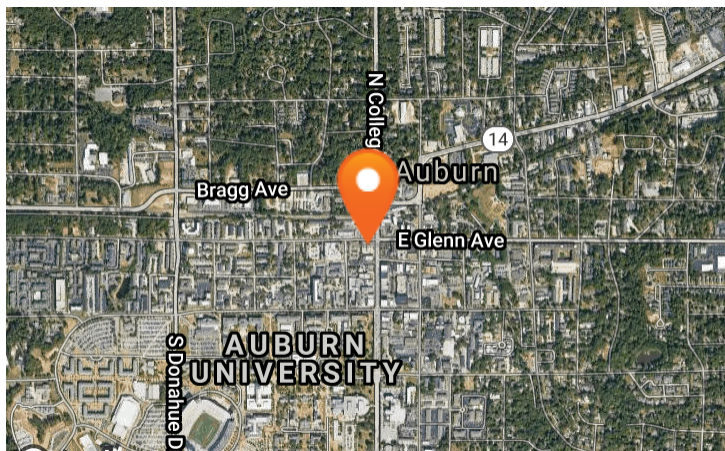
191 N. College Street, Auburn, AL 36830

EXECUTIVE SUMMARY



LOCATION OVERVIEW

Auburn is the largest city in Eastern Alabama, and it is a principal city of the Auburn-Opelika Metropolitan Area. Auburn-Opelika has an MSA of 160,299 and is Alabama's fastest growing metro area. Home to Auburn University, with an enrollment of 28,939, Auburn is largely driven by the influence of education. Auburn's retail corridors have seen massive redevelopment efforts over the last decade as population numbers continue to rise.



PROPERTY HIGHLIGHTS

- 2,450 SF facing Glenn Avenue available for light food or retail use. Space can be divided
- Join Chase Bank, Insomnia Cookies, Domino's Pizza, and Dunkin Donuts along with 495 beds for student housing above 191 College
- Walking distance to Auburn University with a student enrollment of 28,290
- 191 College will be completed in Summer 2019, joining a boom of student housing in the immediate vicinity
- The City of Auburn has seen a 16.3% increase in population in the last 5 years coupled with the Auburn -Opelika MSA, is one of the fastest growing areas in the state

DEMOGRAPHICS

	1 MILE	3 MILES	5 MILES
POPULATION	18,954	49,807	71,294
HOUSEHOLDS	8,276	21,239	29,641
AVERAGE HH INCOME	\$40,902	\$62,163	\$66,875

EXCLUSIVE AGENT(S)

RAY JONES, CCIM • ray.jones@tscg.com • 334.332.8424

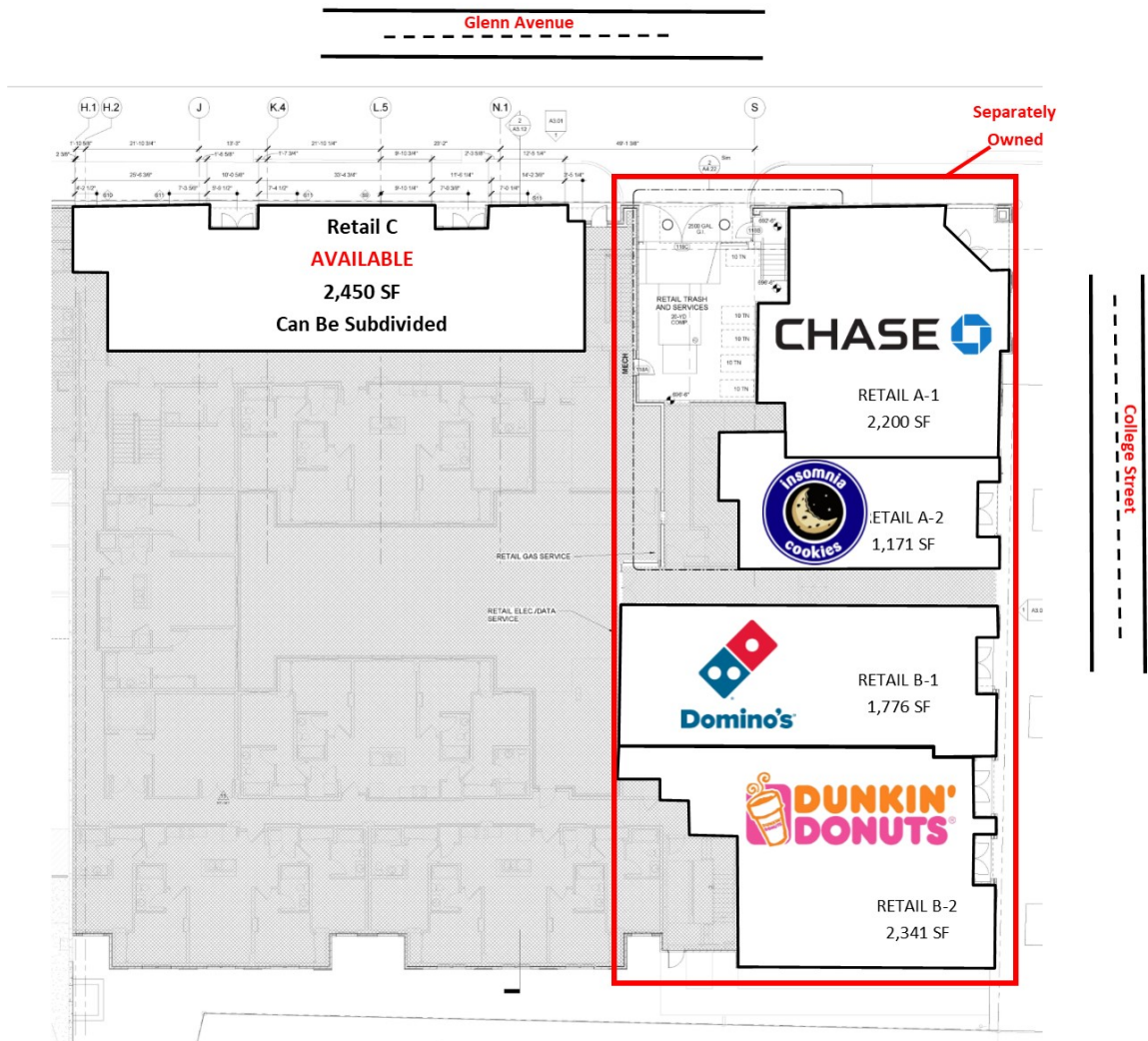
ALEXANDER BARINEAU • alexander.barineau@tscg.com • 205.776.6715



UNIVERSITY 191 COLLEGE REDEVELOPMENT

191 N. College Street, Auburn, AL 36830

SITE PLAN

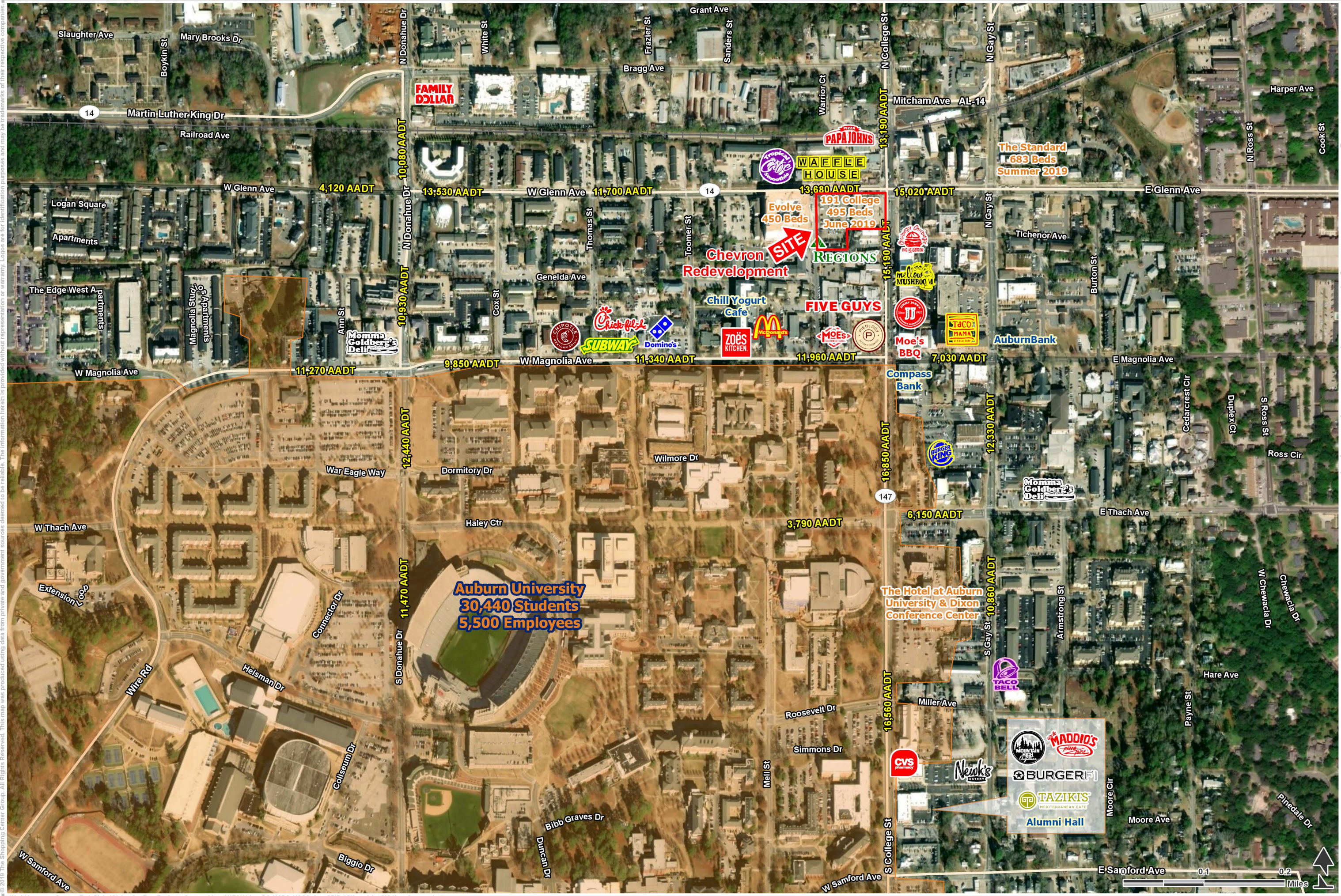


EXCLUSIVE AGENT(S)

RAY JONES, CCIM • ray.jones@tscg.com • 334.332.8424

ALEXANDER BARINEAU • alexander.barineau@tscg.com • 205.776.6715





Auburn, Alabama

Downtown Auburn

Document Path: X:\GIS\PROJ\PROJECTS\ALABAMA\BIRMINGHAM\Aurum and Opelika\Aurum\Aurum Flyer\Aurum Flyer.aprx

© 2019 The Shopping Center Group. All Rights Reserved. This map was produced using data from private and government sources deemed to be reliable. The information herein is provided without representation or warranty. Logos are for identification purposes and may be trademarks of their respective companies.

World Imagery: Source: Esri, DigitalGlobe, GeoEye, Earthstar Geographics, CNES/Airbus DS, USDA, USGS, AeroGRID, IGN, and the GIS User Community