

## 11,000 SF Former Grocery Store Available in Lawrenceville, PA

### Property Highlights

- Former grocery store with majority of shelving and equipment still in place
- Borders Family Dollar
- Good location for grocery store, restaurant, thrift store, non-profit, and much more

### Location Highlights

- Located in Borough of Lawrenceville with numerous rooftops in area
- Directly across from the post office and near numerous businesses as well



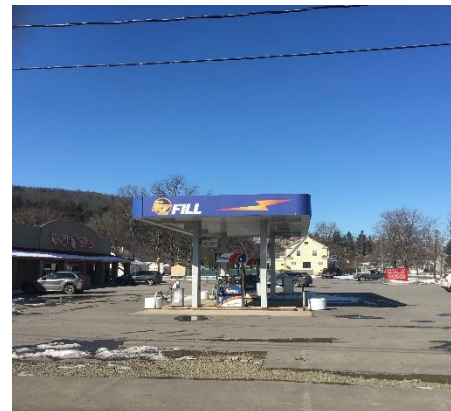
For more information, contact:

**Michael J. Manzari, CCIM, SIOR**  
Associate Real Estate Broker  
607 937 9720 ext. 301  
[mmanzari@pyramidbrokerage.com](mailto:mmanzari@pyramidbrokerage.com)

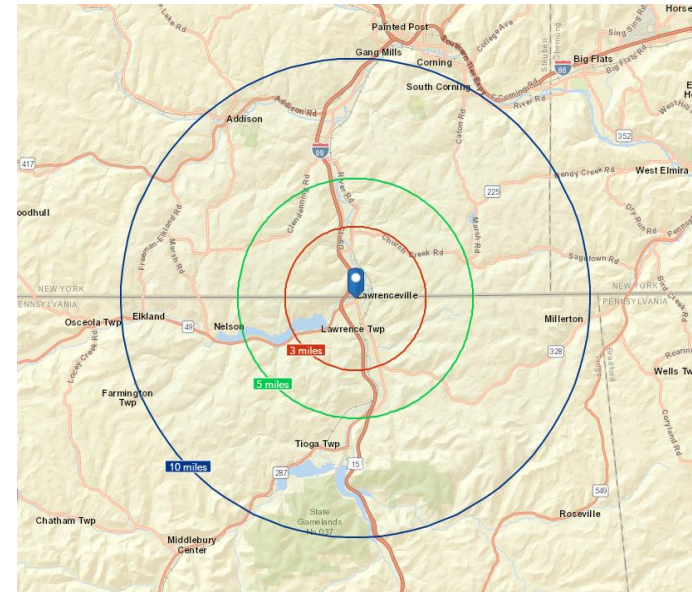
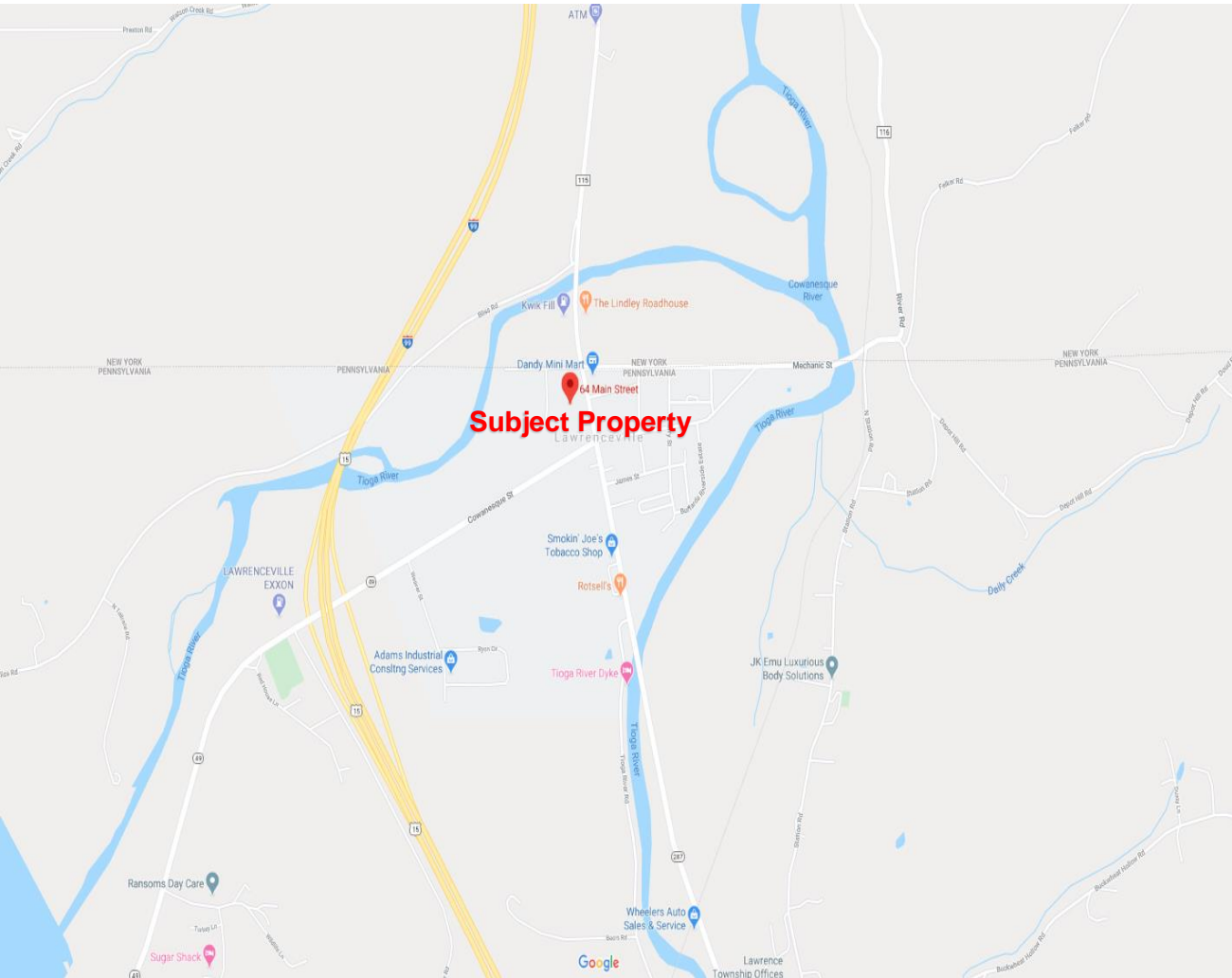
**William Shangraw**  
Real Estate Salesperson  
607 742 5278  
[wshangraw@pyramidbrokerage.com](mailto:wshangraw@pyramidbrokerage.com)

8 Denison Parkway East, Suite 401  
Corning, New York 14830  
phone: +1 607 937 9720

[pyramidbrokerage.com](http://pyramidbrokerage.com)



**FOR LEASE**  
**64 Main Street**  
 Lawrenceville, PA



Demographic	1 Mile	3 Miles	5 Miles
Population	2,242	4,150	18,778
Households	912	1,647	7,551
Average Income	\$65,356	\$66,944	\$75,583
Source	ESRI Business Analyst		