

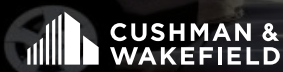
# OYSTER POINT

EXTERIOR UPGRADE COMPLETE!

**667 RSF - 24,307 RSF OFFICE FOR LEASE**

**NEW PRICING: FLOOR 1: \$3.40/RSF FS | FLOORS 2-3: \$3.45/RSF FS | FLOORS 4-5: \$3.50/RSF FS**

**INCENTIVE PRICING FOR SMALL SUITES:** Landlord offers a rental rate of **\$2.50/RSF**, full service, for the first six months for suites up to 1,500 RSF. Minimum term is three months. Suites shall be lease on an “as-is” basis. Offer expires on November 30, 2020.



# NEW PRICING

## INCENTIVE PRICING FOR SMALL SUITES

Landlord offers a rental rate of \$2.50/RSF, full service, for the first six months for suites up to 1,500 RSF. Minimum term is three months. Suites shall be lease on an “as-is” basis. Offer expires on November 30, 2020.

**FLOORS 4-5: \$3.50 FS**



**FLOORS 2-3: \$3.45 FS**



**FLOOR 1: \$3.40 FS**



# ABOUT

## OYSTER POINT MARINA PLAZA

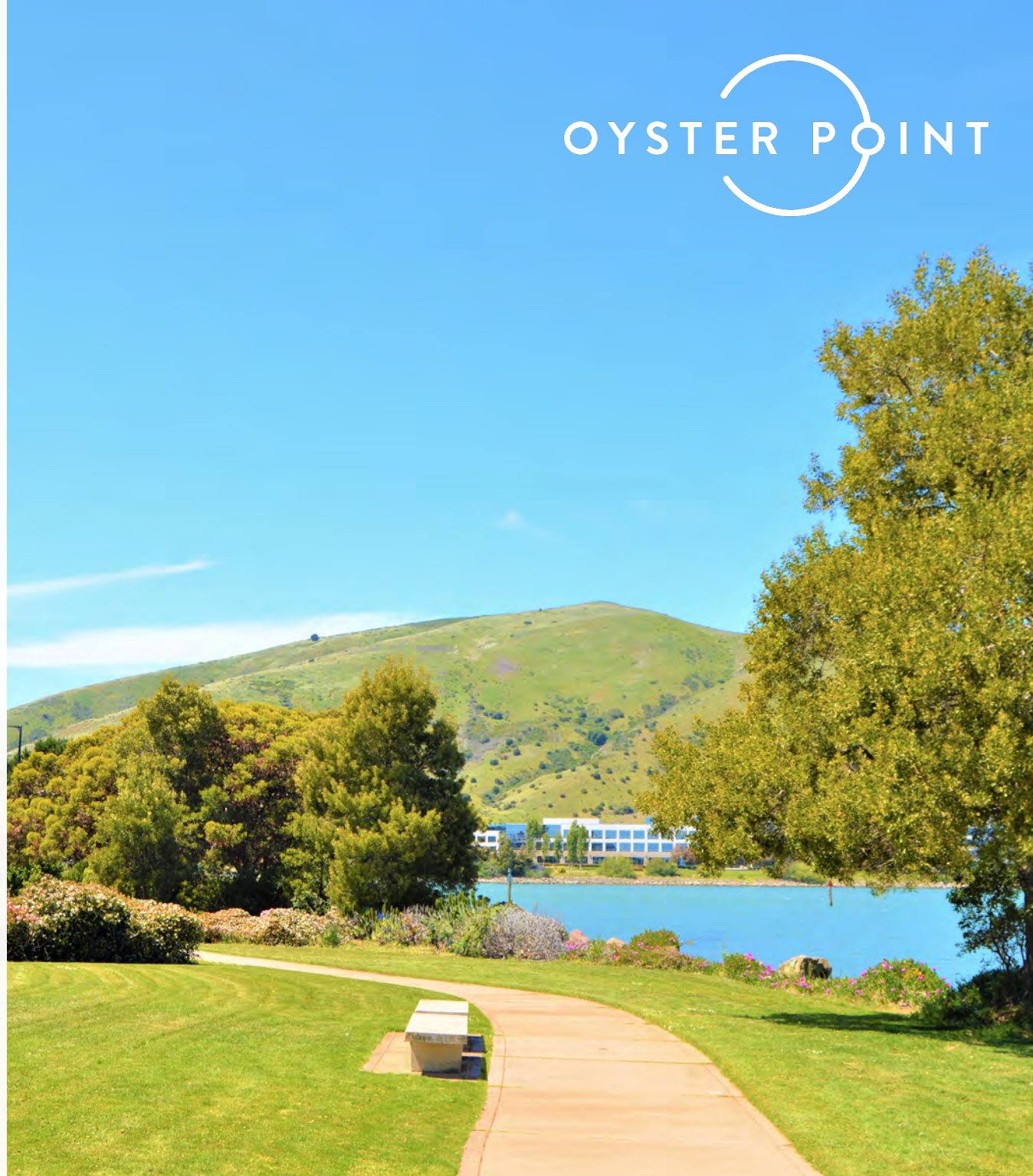
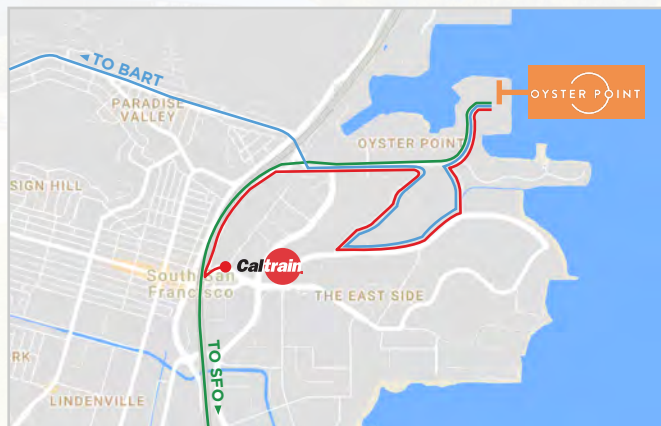
Oyster Point Marina Plaza (OPMP) is situated on the San Francisco Bay and enjoys spectacular water views. OPMP includes two, five-story office buildings of the highest quality. OPMP has attained LEED Platinum status, the highest environmentally friendly designation in the industry. OPMP has convenient shuttle transportation to BART, SamTrans, SF Ferry and Caltrans every half hour.

OPMP is conveniently located on Oyster Point Boulevard with immediate access to Highway 101 and the major transportation arterials of Highways 280 and 380. Locally tenants will find a plethora of restaurants and premier hotels, many within walking distance.

# SUSTAINABILITY



In 2016, Oyster Point Marina Plaza earned and was awarded the 5-year certification of LEED (Leadership in Energy and Environmental Design) PLATINUM-EB (Existing Buildings) by the U.S.G.B.C. (United States Green Building Council). As part of our efforts to attain this prestigious recognition, we ask that our Tenants participate in energy conservation, recycling, and alternate forms of transportation, which can have a significant impact on the total energy usage each year as well as the opportunity to reduce our carbon footprint.



**400 OYSTER POINT**  
**667 - 2,483 SF AVAILABLE**

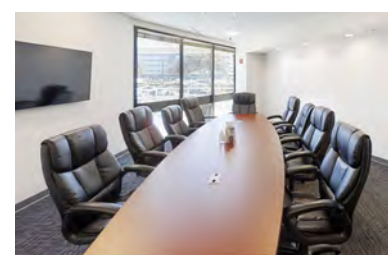
**395 OYSTER POINT**  
**749-24,307 SF AVAILABLE**

**NEW TRAINING ROOM**



**PREVIEW HERE**

**NEW CONFERENCE ROOM**

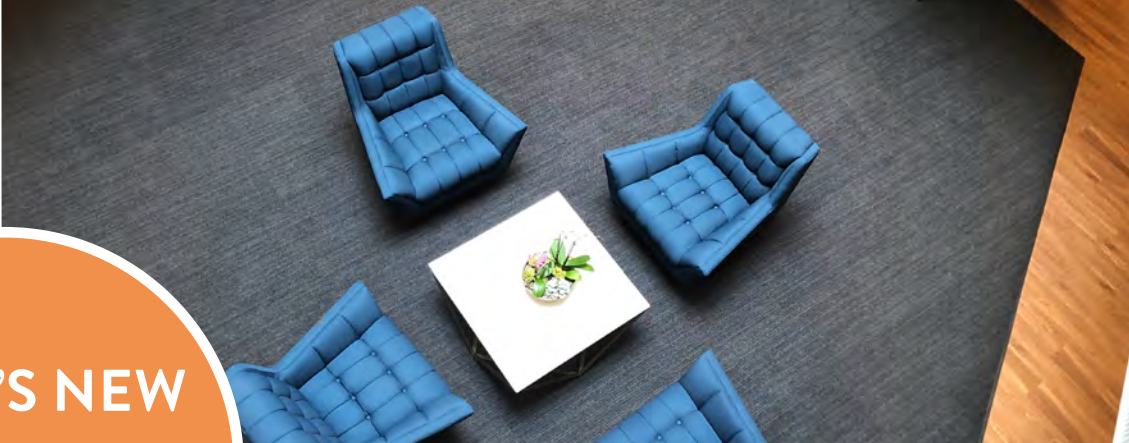


**PREVIEW HERE**

OYSTER POINT



**MARKET READY SUITES**



**WHAT'S NEW  
AT OYSTER  
POINT?**

**NEW COMMON LOBBIES**

**UPGRADED COMMON  
CONFERENCE CENTERS**



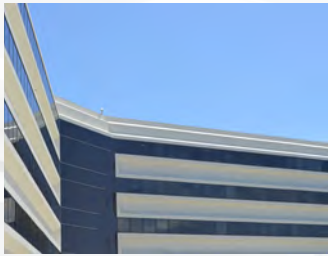
**NEW OUTDOOR AREA & UPGRADED EXTERIOR**



**UPDATED FITNESS CENTER**



# PROJECT HIGHLIGHTS



## 667- 24,307 RSF OFFICE SPACE FOR LEASE

- Full Exterior Building Upgrade Complete (2020)
- New & Upgraded HVAC/Mechanical System (2019)
- Spectacular San Francisco Bay Views
- Water Views from Most Suites
- New Market Ready Building Standard Finishes
- Market Ready Suites Complete
- Renovated Two-Story Atrium Lobby Areas
- New Outdoor Amenity Area Complete
- Renovated Fitness Center w/ Showers & Locker Room
- Direct Access to Miles of Bayfront Trails
- Convenient Access to BART, CalTrain, SamTrans and SF Ferry
- Walking Distance to New Water Shuttle Terminal to Jack London Square
- 3.4/1000 Parking on ±22 Acre Site
- 3 Upgraded Common Conference Rooms Available
- Training Room for Up to 35+ People
- Seven Day, 24-Hour Lobby Attendants with Card-Key Access After Hours
- On-Site Management and Building Engineers
- On-Site Full Service Restaurant & Deli (Catering Available) - Hana's Café
- New Laundry Locker Automated Dry Cleaning Service

### VIRTUAL CONFERENCE ROOM TOURS:





# AVAILABILITY

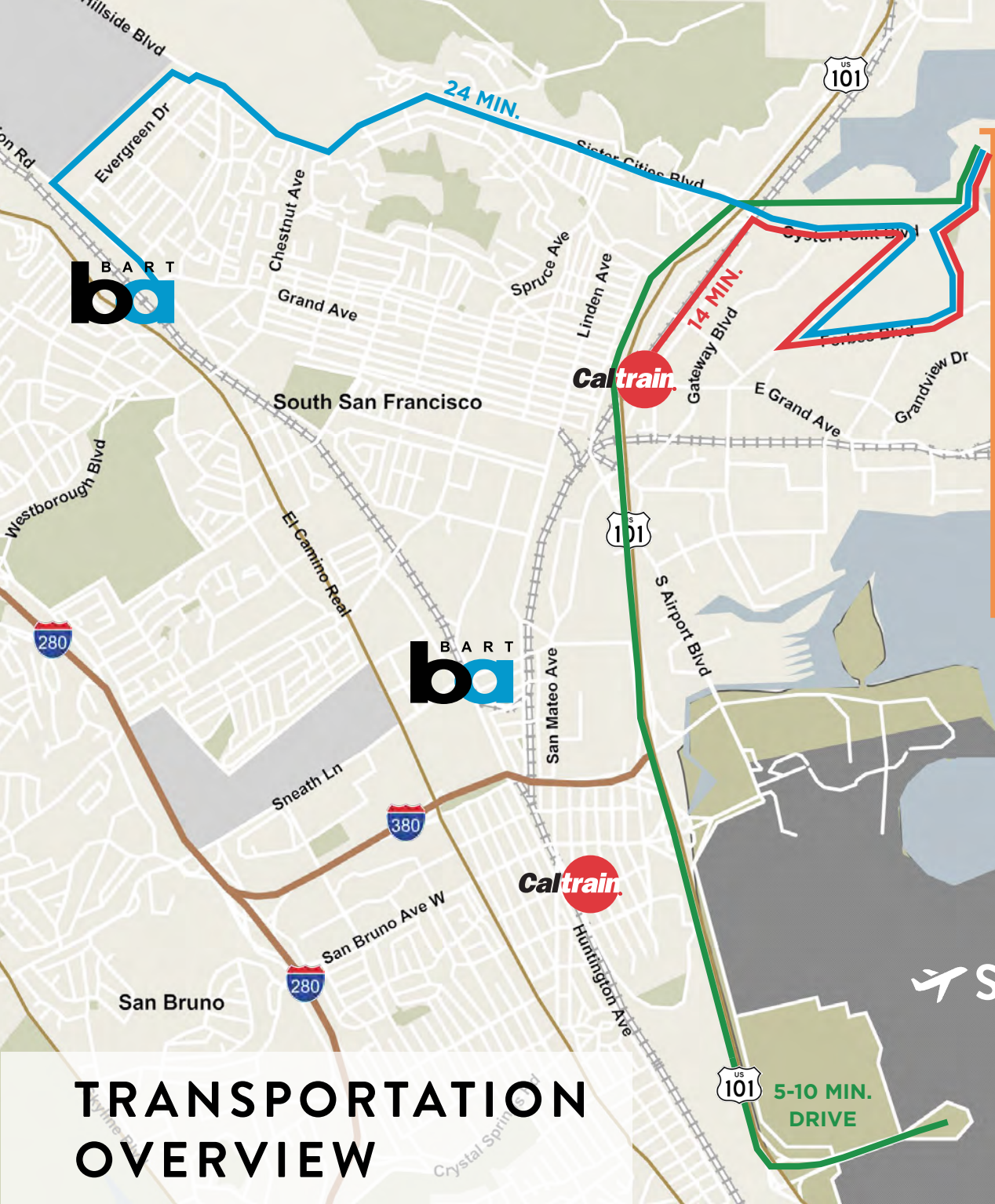
**\*MARKET READY**

SUITE <b>129/400</b> <b>667 RSF</b> AVAILABLE NOW	SUITE <b>436/400</b> <b>749 RSF</b> AVAILABLE NOW	SUITE <b>226/395</b> <b>749 RSF</b> AVAILABLE NOW	SUITE <b>224/395</b> <b>750 RSF</b> AVAILABLE NOW	SUITE <b>421/400</b> <b>752 RSF</b> AVAILABLE NOW	SUITE <b>133/400</b> <b>890 RSF</b> AVAILABLE NOW
SUITE <b>212/400</b> <b>900 RSF</b> AVAILABLE NOW	SUITE <b>124/400</b> <b>1,421 RSF</b> AVAILABLE NOW	SUITE <b>110/400</b> <b>1,437 RSF</b> AVAILABLE NOW	SUITE <b>412/400</b> <b>1,494 RSF</b> AVAILABLE NOW	SUITE <b>407/400</b> <b>1,494 RSF</b> AVAILABLE NOW	SUITE <b>531/400</b> <b>1,558 RSF</b> AVAILABLE NOW
SUITE <b>434/400</b> <b>1,710 RSF</b> AVAILABLE NOW	SUITE <b>308/395</b> <b>1,801 RSF</b> AVAILABLE NOW	SUITE <b>514/395</b> <b>1,984 RSF</b> AVAILABLE NOW	SUITE <b>230/395</b> <b>2,281 RSF</b> AVAILABLE NOW	SUITE <b>426/400</b> <b>2,314 RSF</b> AVAILABLE NOW	SUITE <b>120/400*</b> <b>2,447 RSF</b> AVAILABLE NOW
SUITE <b>539/400</b> <b>2,468 RSF</b> AVAILABLE 12/01/20	SUITE <b>417/400</b> <b>2,483 RSF</b> AVAILABLE NOW	SUITE <b>213/400*</b> <b>2,613 RSF</b> AVAILABLE NOW	SUITE <b>321/400</b> <b>2,741 RSF</b> AVAILABLE NOW	SUITE <b>120/395*</b> <b>2,775 RSF</b> AVAILABLE NOW	SUITE <b>405/395</b> <b>2,786 RSF</b> AVAILABLE NOW
SUITE <b>309/395</b> <b>3,403 RSF</b> AVAILABLE 11/01/20	SUITE <b>409/395</b> <b>3,901 RSF</b> AVAILABLE NOW	SUITE <b>218/395</b> <b>4,621 RSF</b> AVAILABLE NOW	SUITE <b>306/395</b> <b>5,314 RSF</b> AVAILABLE NOW	SUITE <b>209/395</b> <b>5,463 RSF</b> AVAILABLE NOW	SUITE <b>121/395</b> <b>5,729 RSF</b> AVAILABLE NOW
SUITE <b>321/395</b> <b>16,776 RSF</b> AVAILABLE NOW	SUITE <b>420/395</b> <b>17,620 RSF</b> AVAILABLE NOW	SUITE <b>405-409-420/395</b> <b>24,307 RSF</b> AVAILABLE NOW	<a href="#">CLICK HERE TO VIEW FLOOR PLANS</a>		


## VIRTUAL TOURS (CLICK TO VIEW)

<a href="#">SUITE 133/400</a>	<a href="#">SUITE 124/400</a>	<a href="#">SUITE 110/400</a>	<a href="#">SUITE 308/395</a>
<a href="#">SUITE 120/400</a>	<a href="#">SUITE 213/400</a>	<a href="#">SUITE 120/395</a>	

# OYSTER POINT



**OYSTER POINT SHUTTLE STOP**

14 MINUTES    24 MINUTES

[CLICK HERE FOR SHUTTLE SCHEDULES](#)

## TRANSPORTATION OVERVIEW

# AMENITIES

## RESTAURANTS

- |                             |                              |
|-----------------------------|------------------------------|
| 1 Hana's Café & Deli        | 12 Taquerias El Farolito     |
| 2 Oyster Café               | 13 Cecilia's Pizzeria        |
| 3 Specialty's               | 14 Peet's Coffee             |
| 4 Starbucks                 | 15 WhiteCaps Drinks + Eats   |
| 5 Café de Casa              | 16 Dunkin Donuts             |
| 6 Darby Dan's Sandwiches    | 17 HL Peninsula Restaurant   |
| 7 Bertolucci's              | 18 Foundry & Lux             |
| 8 Thai Satay Restaurant/Bar | 19 Amoura Restaurant         |
| 9 Los Compadres             | 20 Café 382                  |
| 10 Di Napoli Ristorante     | 21 La Tapatia Mexicatessen   |
| 11 Buon Gusto               | 22 Armstrong Brewing Company |

## HOTELS

- |                             |                              |
|-----------------------------|------------------------------|
| 1 Ramada Limited            | 8 Embassy Suites             |
| 2 Residence Inn by Marriott | 9 Comfort Inn & Suites       |
| 3 Courtyard San Francisco   | 10 Ramada Inn & Suites       |
| 4 Four Points Sheraton      | 11 DoubleTree by Hilton      |
| 5 Larkspur Landing          | 12 Homewood Suites by Hilton |
| 6 Hilton Garden Inn         | 13 AC Hotel by Marriott      |
| 7 Hampton Inn               |                              |

## LIFESTYLE

- |                           |                             |
|---------------------------|-----------------------------|
| 1 FedEx Service Center    | 7 Bank of America           |
| 2 AVIS Rent-A-Car         | 8 Gateway Child Development |
| 3 UPS                     | 9 Full Grip Crossfit        |
| 4 Oyster Point Yacht Club | 10 Oyster Point Park        |
| 5 Costco Business Center  | 11 Costco Wholesale         |
| 6 Lowes                   |                             |



# OYSTER POINT

667 RSF – 24,307 RSF OFFICE SPACE FOR LEASE



SCOTT ENNIS | +1 408 572 4125 | [scott.ennis@cushwake.com](mailto:scott.ennis@cushwake.com) | LIC #00798264

CLARK STEELE | +1 408 436 3653 | [clark.steele@cushwake.com](mailto:clark.steele@cushwake.com) | LIC #01995379

CHRIS BLOM | +1 650 931 2210 | [chris.blom@cushwake.com](mailto:chris.blom@cushwake.com) | LIC #02031205



[VIEW SITE SPECIFIC COVID-19 PREVENTION PLAN](#)

Cushman & Wakefield Copyright 2020. No warranty or representation, express or implied, is made to the accuracy or completeness of the information contained herein, and same is submitted subject to errors, omissions, change of price, rental or other conditions, withdrawal without notice, and to any special listing conditions imposed by the property owner(s). As applicable, we make no representation as to the condition of the property (or properties) in question.