

1726 Roosevelt Road

Broadview, IL | 60155

For Sale

Retail Property



- ▶ ±15,142 SF lot available
- ▶ Single story, ±6,218 SF brick commercial building located on site
- ▶ 17 surface parking spaces are included
- ▶ Excellent visibility from the corner of Roosevelt & 18th Avenue
- ▶ Large pylon sign on site
- ▶ Located on the heavily trafficked Roosevelt Road (28,700 VPD)
- ▶ Less than a mile from the Loyola University Medical Center
- ▶ Easy access to I-290 located just to the north

DEMOGRAPHICS

	1 MILE	3 MILES	5 MILES
Estimated Population	17,263	160,284	492,450
Adj. Daytime Demographics	23,595	166,106	467,511
Estimated Households	6,046	58,933	176,065
Estimated Average Household Income	\$66,796	\$84,775	\$91,902

DOUG RENNER

312.275.3137
doug.renner@baumrealty.com

TREVOR JACK

312.275.3128
trevor@baumrealty.com



© 2018 All information supplied is from sources deemed reliable and is furnished subject to errors, omissions, modifications, removal of the listing from sale or lease, and to any listing conditions, including the rates and manner of payment of commissions for particular offerings, the terms of which are available to principals or duly licensed brokers. Any square footage dimensions set forth are approximate.

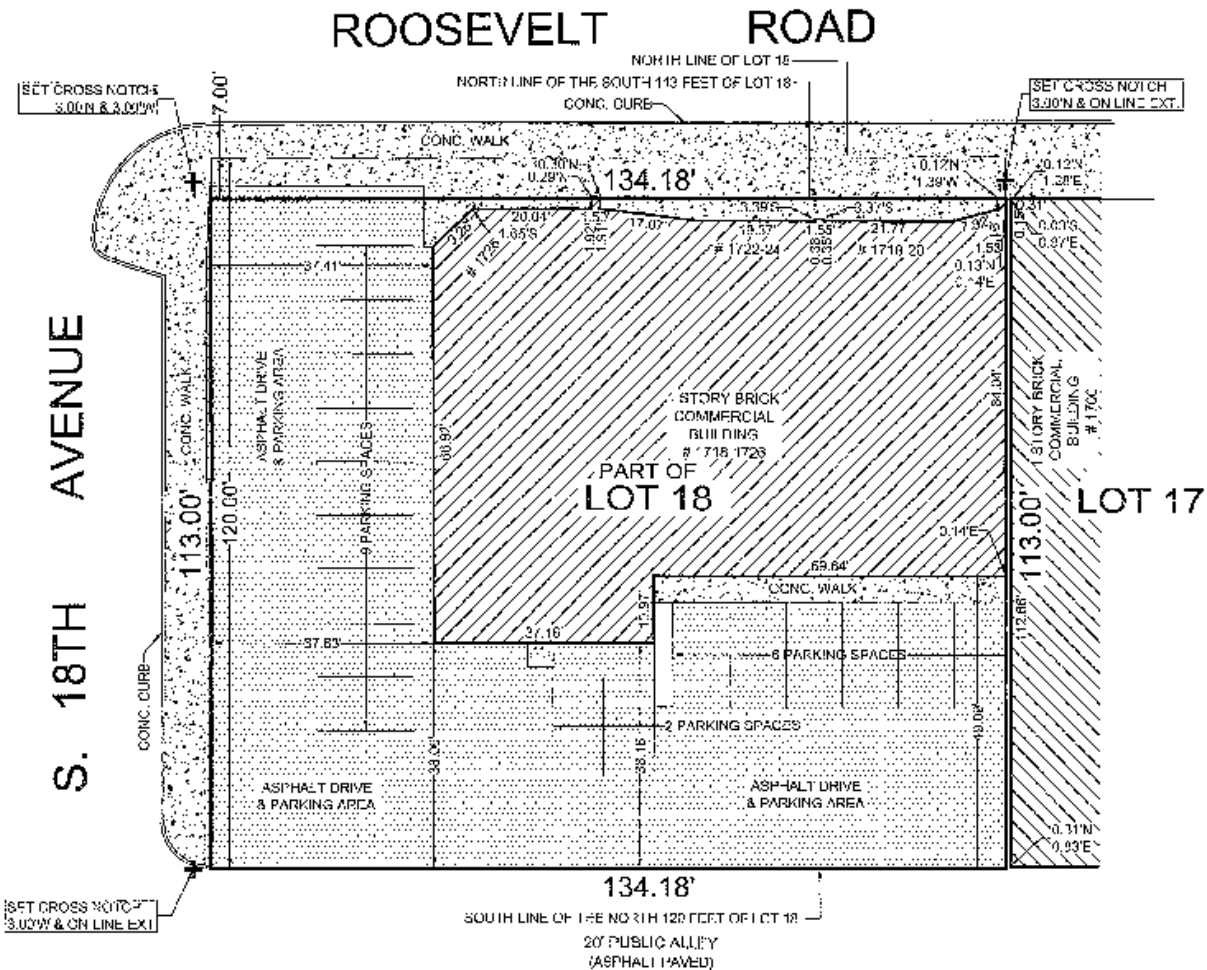
1726 Roosevelt Road

Broadview, IL | 60155

For Sale

Retail Property

PARKING SPACE TABLE	
TYPE OF SPACE	TOTAL EXISTING
REGULAR	17
LANDCAP	0
TOTAL	17



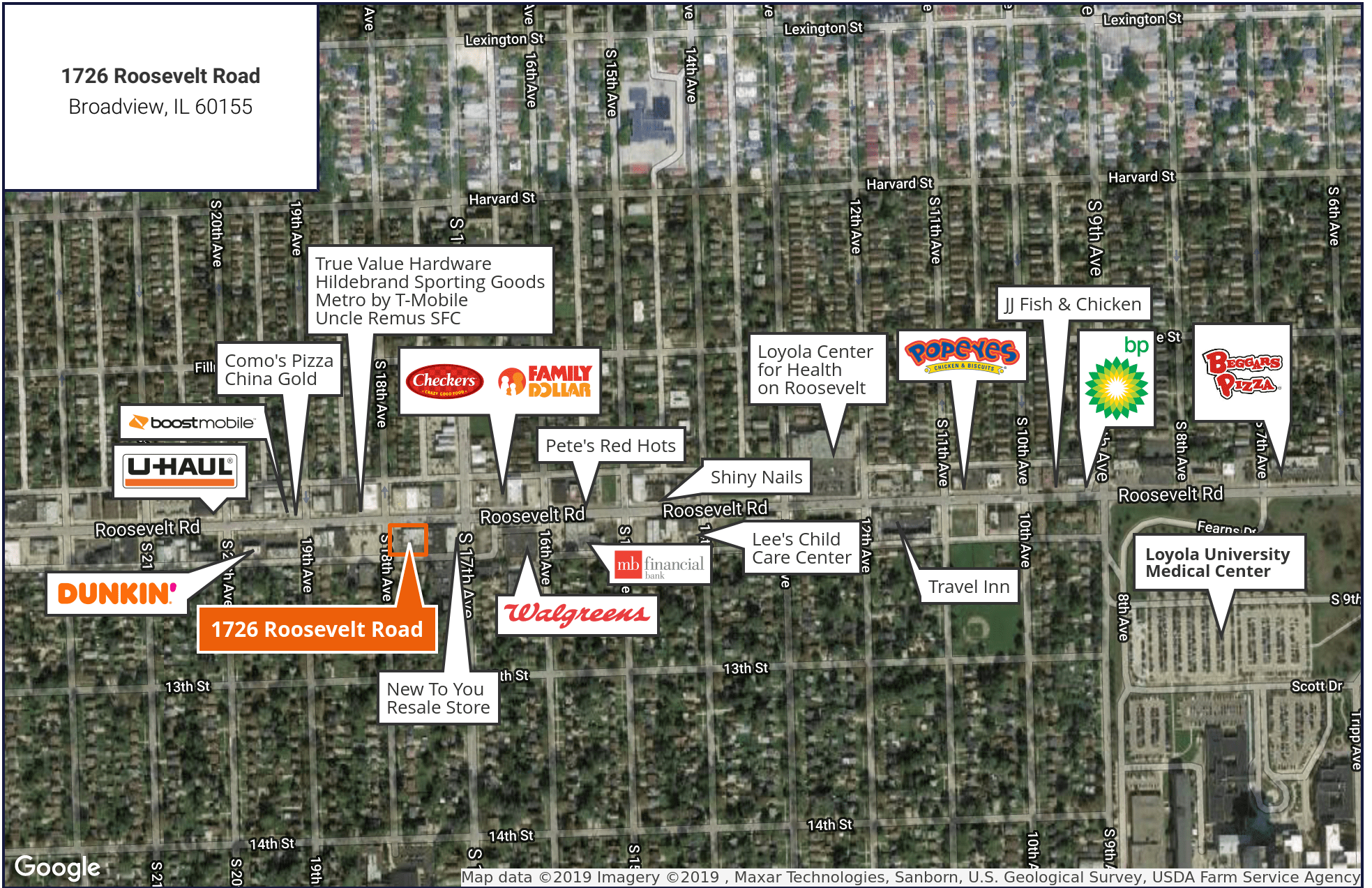
DOUG RENNER
 312.275.3137
 doug.renner@baumrealty.com

TREVOR JACK
 312.275.3128
 trevor@baumrealty.com



© 2018 All information supplied is from sources deemed reliable and is furnished subject to errors, omissions, modifications, removal of the listing from sale or lease, and to any listing conditions, including the rates and manner of payment of commissions for particular offerings, the terms of which are available to principals or duly licensed brokers. Any square footage dimensions set forth are approximate.

1726 Roosevelt Road
Broadview, IL 60155



Google

Map data ©2019 Imagery ©2019, Maxar Technologies, Sanborn, U.S. Geological Survey, USDA Farm Service Agency



© 2018 All information supplied is from sources deemed reliable and is furnished subject to errors, omissions, modifications, removal of the listing from sale or lease, and to any listing conditions, including the rates and manner of payment of commissions for particular offerings, the terms of which are available to principals or duly licensed brokers. Any square footage dimensions set forth are approximate.

