

OSW Broadway Building

20124 Broadway Ave, #C
Snohomish, WA (Maltby)

Excellent Owner-User
Opportunity

34,238 SF (includes 5,000 SF air
conditioned office)

Owner to leaseback through 2016

Grade level loading doors
(dock high possible)

24' clear height

Industrial Park Zoning,
Snohomish County

Quality concrete-tilt
construction, built in 2008

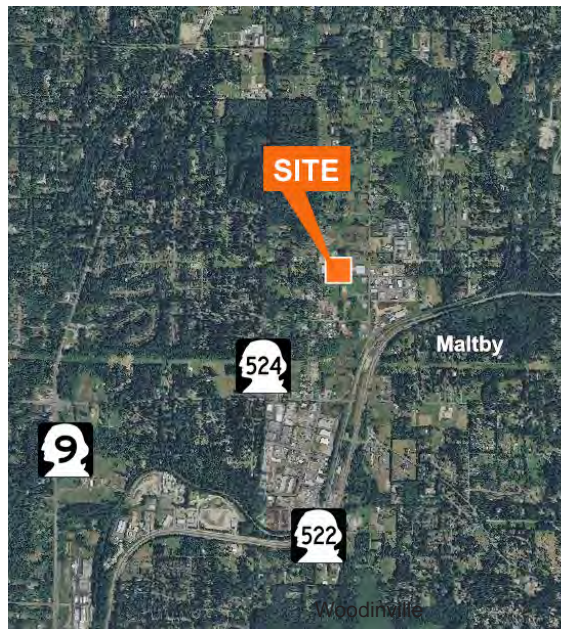
Easily divisible for 2 tenants

Additional 2.4 acres also owned by
OSW available for sale at \$12/SF

Sales price: \$4,950,000 (\$145/SF)



Location



Contact

Zach Vall-Spinosa

425.450.1115

zachv@kiddermathews.com

Dave Bernard

425.450.1103

dbernard@kiddermathews.com

James Leptich

425.450.1159

jleptich@kiddermathews.com

OSW Broadway Building



Contact

Zach Vall-Spinosa
425.450.1115
zachv@kiddermathews.com

Dave Bernard
425.450.1103
dbernard@kiddermathews.com

James Leptich
425.450.1159
jleptich@kiddermathews.com