

SPACE AVAILABLE



717 Constitution Drive

3,651 sq ft | 2,512 sq ft | Competitive Terms | Available Immediately

EagleviewSM is an exceptional place to do business. 717 Constitution Drive is a 32,400 square-foot class A two-story suburban office building is located only 1/4 mile from the PA Turnpike at Eagleview's highest point. With both turnpike and Route 100 visibility, this building provides a beacon for the surrounding community.

717 Constitution Drive is conveniently located near Eagleview Town Center's numerous amenities. Eagleview has been designed to perfectly accommodate your work-life and lifestyle. Offering over 2,500,000 square feet of commercial space alongside superior residences, dining, shopping and a beautifully landscaped park, it boasts a vibrant Town Center that offers a convenient solution for your everyday needs and a work environment that is both efficient and enjoyable.

Eagleview Town Center is also a hub for community events throughout the year, such as the summer concert series, 5Ks, a farmers' market, movie nights and much more! For up-to-date business and event information, subscribe to InEagleview.com.

EAGLEVIEWSM

BUILDING FEATURES

- Contemporary design with precast concrete & glass exterior
- Two story lobby with architectural staircase
- Double door entrance
- Zone controlled heating & air conditioning
- Access control system
- Fully sprinklered
- 117 parking spaces, additional parking available
- 24/7 property management

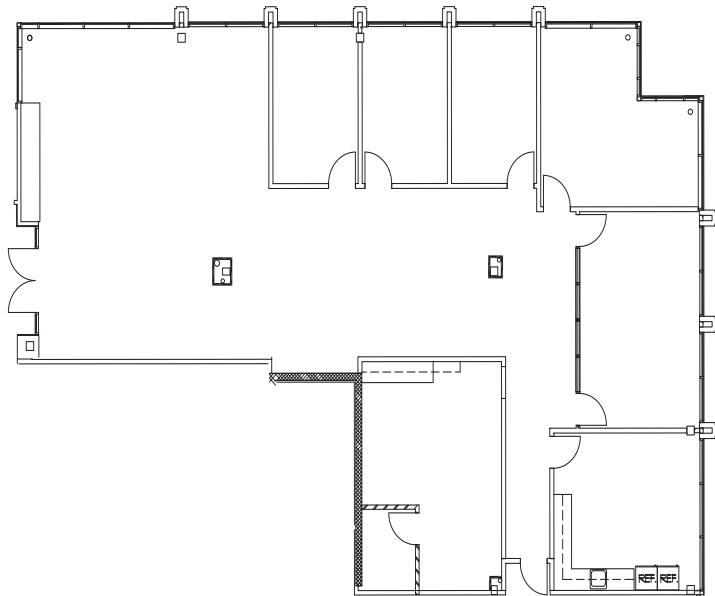


610.458.1900
HankinGroup.com

SPACE AVAILABLE

717 Constitution Drive

3,651 SF FIRST FLOOR SUITE AVAILABLE



EAGLEVIEWSM

To schedule a tour or for more information, please contact:

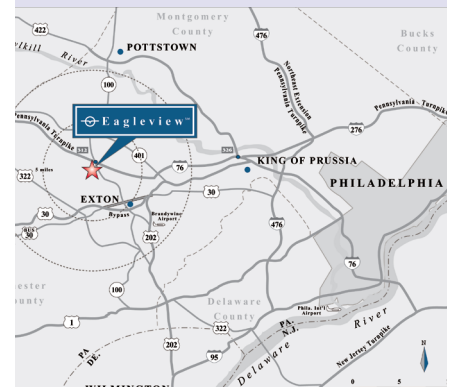
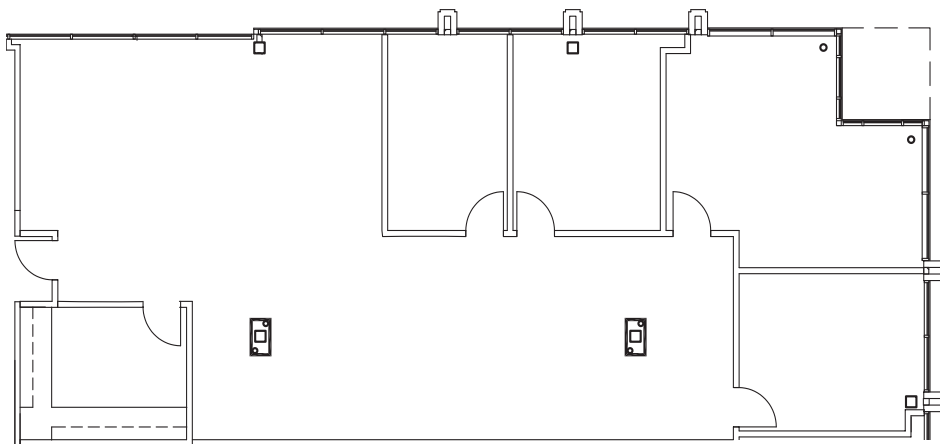
STACY MARTIN
stacy.martin@hankingroup.com
484.713.8801

SAM SHERRILL
sam.sherrill@hankingroup.com
484.713.8802

Hankin Group
707 Eagleview Blvd
Exton, PA 19341
HankinGroup.com

FAX 610.458.0764

2,512 SF FIRST FLOOR SUITE AVAILABLE



610.458.1900
HankinGroup.com

