

PARKSIDE RETAIL

12750 Parkside Drive Fishers, IN 46083



MIDLAND ATLANTIC
PROPERTIES



PROPERTY OVERVIEW

Parkside Retail is located in the affluent Fishers trade area, a suburb located Northeast of Indianapolis.

PROPERTY HIGHLIGHTS

- 1,500 - 2,960 Square Feet Available
- 1,500 Square Foot North Endcap with Drive-Thru
- Recently Completed Intersection Upgrade at US-37 & 126th Street Allows for Easy Access
- Exposure to 58,357 Vehicles Per Day

DEMOGRAPHICS

	3 MILE	5 MILES
Total Population	73,661	160,113
Average HH Income	\$134,069	\$136,765
Businesses	2,675	5,829
Employees	29,449	67,512

TRAFFIC COUNTS

State Road 37	44,732
126th Street	13,625



MIDLAND ATLANTIC PROPERTIES

Indianapolis Office
3801 East 82nd Street, Suite B
Indianapolis, IN 46240

MIDLANDATLANTIC.COM

SHAWN HEFFERN

Direct: 317.597.1715
Cell: 317.695.8938
sheffern@midlandatlantic.us

DEVELOPMENT • BROKERAGE • ACQUISITIONS • MANAGEMENT

Information contained herein has been obtained from sources deemed reliable but is not guaranteed and is subject to change without notice.

PARKSIDE RETAIL

12750 Parkside Drive Fishers, IN 46083



MIDLAND ATLANTIC
PROPERTIES

**AVAILABLE
1,500 Square Feet**

Enterprise Drive



**AVAILABLE
2,960 Square Feet**

East 126th Street

PARKSIDE RETAIL

12750 Parkside Drive Fishers, IN 46083



MIDLAND ATLANTIC
PROPERTIES

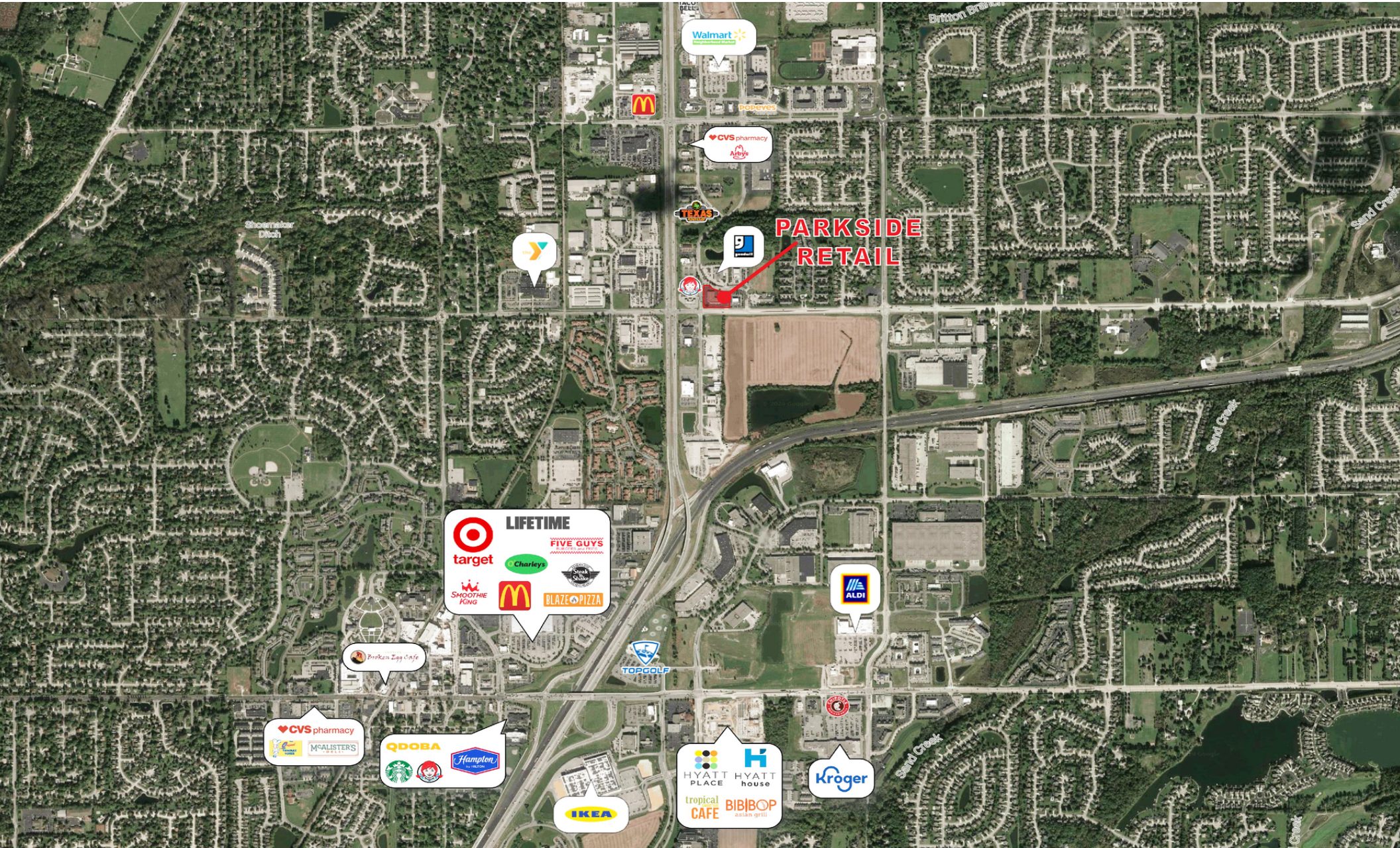


PARKSIDE RETAIL

12750 Parkside Drive Fishers, IN 46083



MIDLAND ATLANTIC
PROPERTIES

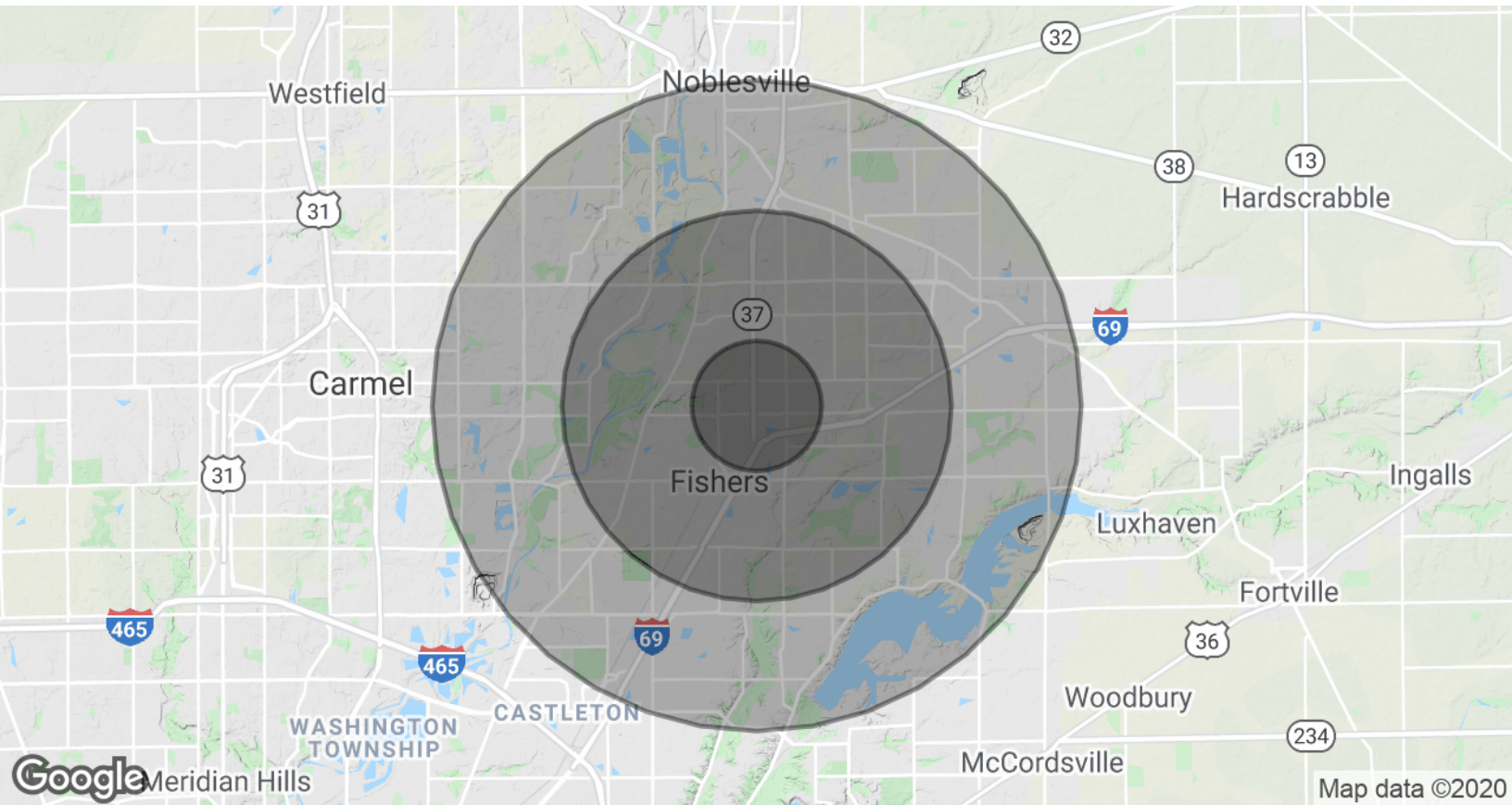


PARKSIDE RETAIL

12750 Parkside Drive Fishers, IN 46083



MIDLAND ATLANTIC
PROPERTIES



POPULATION & HOUSING

	3 MILE	5 MILES	7 MILES
Total Population	73,661	160,113	282,058
Projected Annual Growth (2020-2025)	2.3%	2.1%	2%
Total Households	28,071	60,744	109,732
Median Home Value	\$267,688	\$277,894	\$270,430

INCOME & BUSINESS

	3 MILE	5 MILES	7 MILES
Average HH income	\$134,069	\$136,765	\$129,008
Daytime Population (16+ years)	44,553	103,394	231,591
Total Businesses	2,675	5,829	13,261
Total Employees	29,449	67,512	164,810

MIDLAND ATLANTIC PROPERTIES

Indianapolis Office
3801 East 82nd Street, Suite B
Indianapolis, IN 46240

SHAWN HEFFERN

Direct: 317.597.1715
Cell: 317.695.8938
sheffern@midlandatlantic.us

MIDLANDATLANTIC.COM

DEVELOPMENT • BROKERAGE • ACQUISITIONS • MANAGEMENT

Information contained herein has been obtained from sources deemed reliable but is not guaranteed and is subject to change without notice.