



 **Newmark  
Knight Frank**

# **FOR SALE GREILICH RANCH ±167 Acres**

**A Mixed Use Development  
Opportunity in the City of  
Plymouth, Amador County,  
California**

**Ken Noack, Jr.**  
916.569.2384  
[knoack@ngkf.com](mailto:knoack@ngkf.com)  
CA RE License #00777705

**980 Ninth Street, Suite 2500  
Sacramento, CA. 95814**

[www.ngkf.com](http://www.ngkf.com)

14-1474-10/18



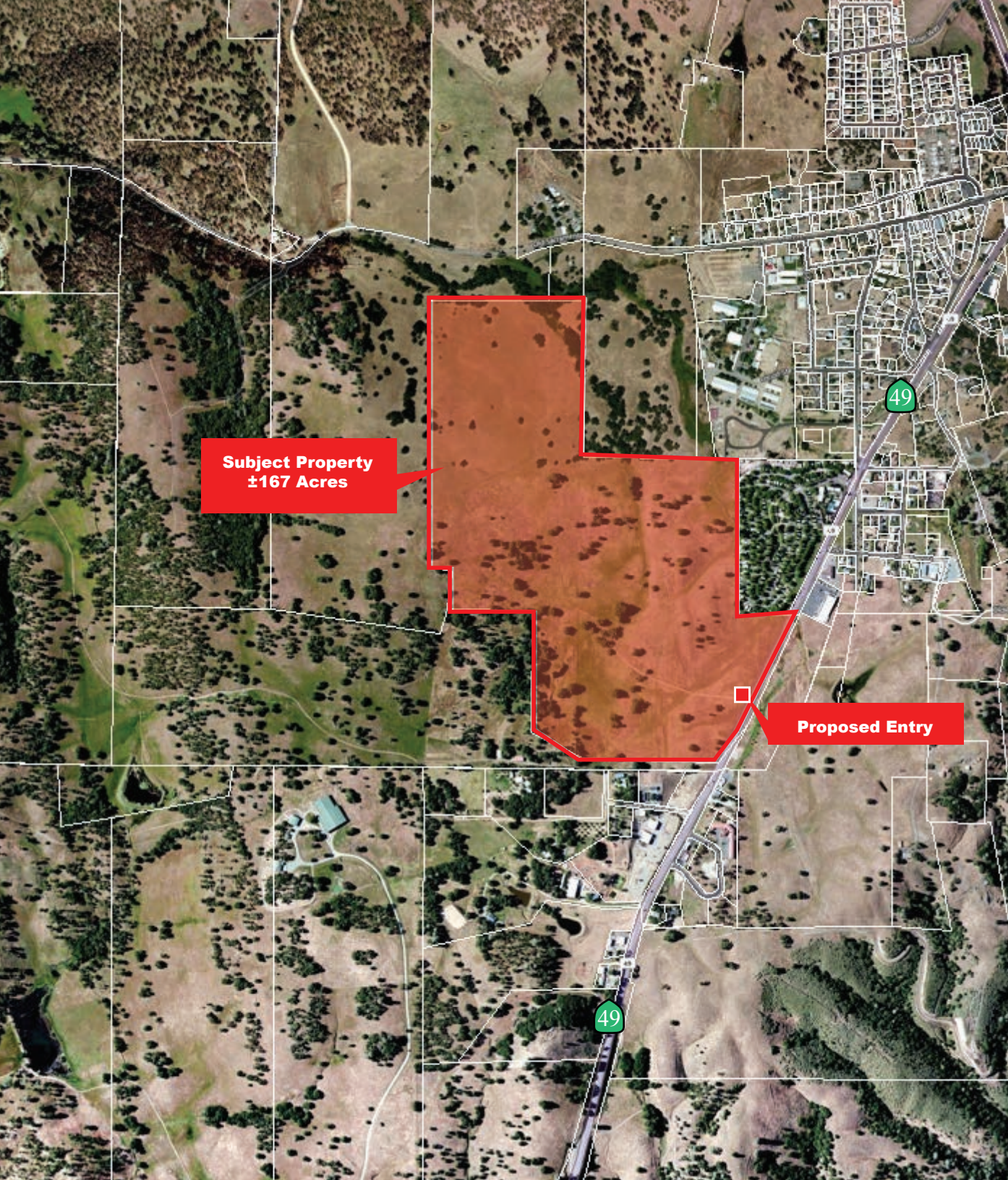
# FOR SALE GREILICH RANCH ±167 Acres

- Suburban commercial frontage along Highway 49
- Residential zoning and planned development overlay throughout the balance of the property

**Ken Noack, Jr.**  
916.569.2384  
[knoack@ngkf.com](mailto:knoack@ngkf.com)  
CA RE License #00777705

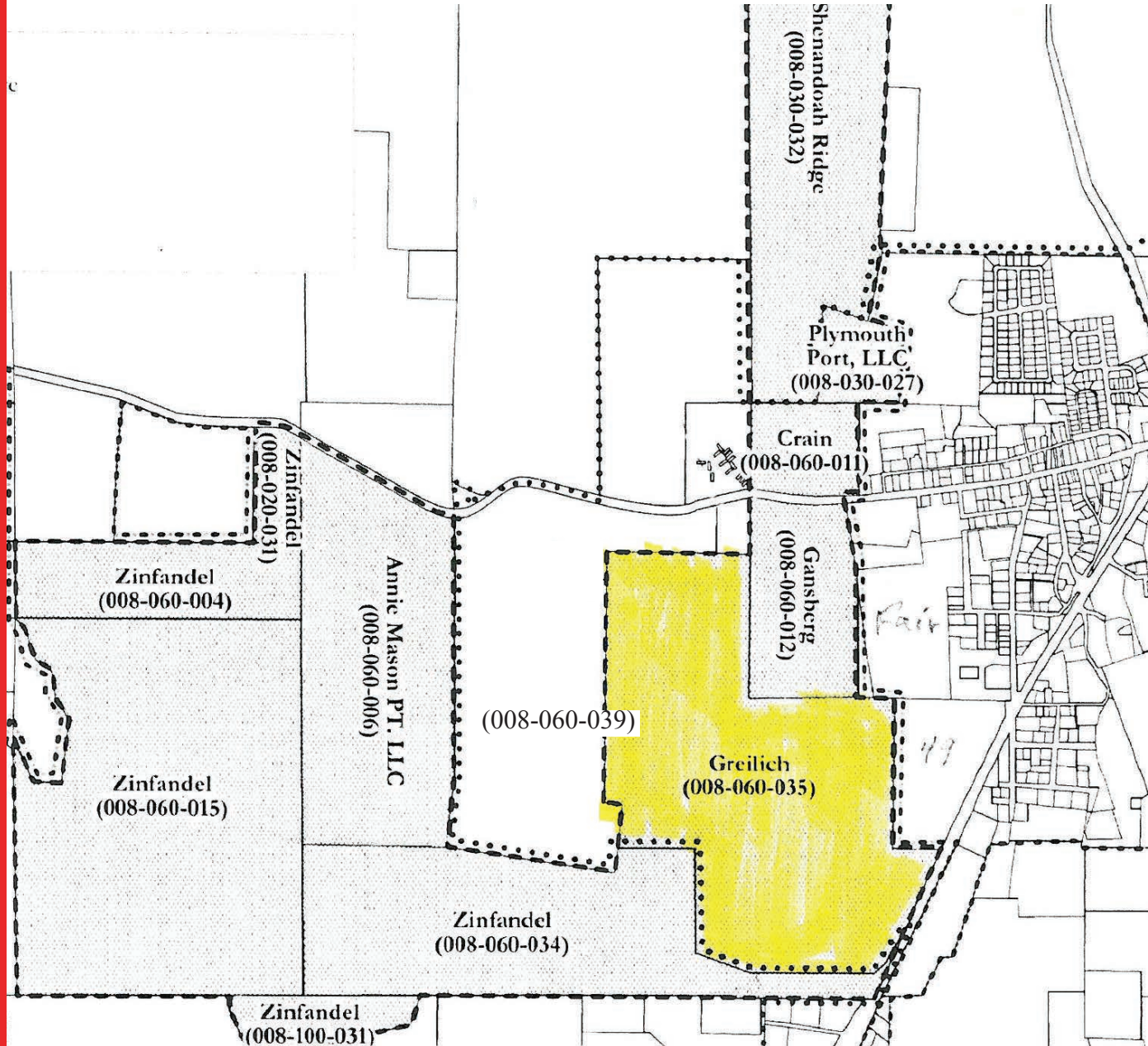
980 Ninth Street, Suite 2500  
Sacramento, CA. 95814

[www.ngkf.com](http://www.ngkf.com)





**FOR SALE  
GREILICH  
RANCH  
±167 Acres**



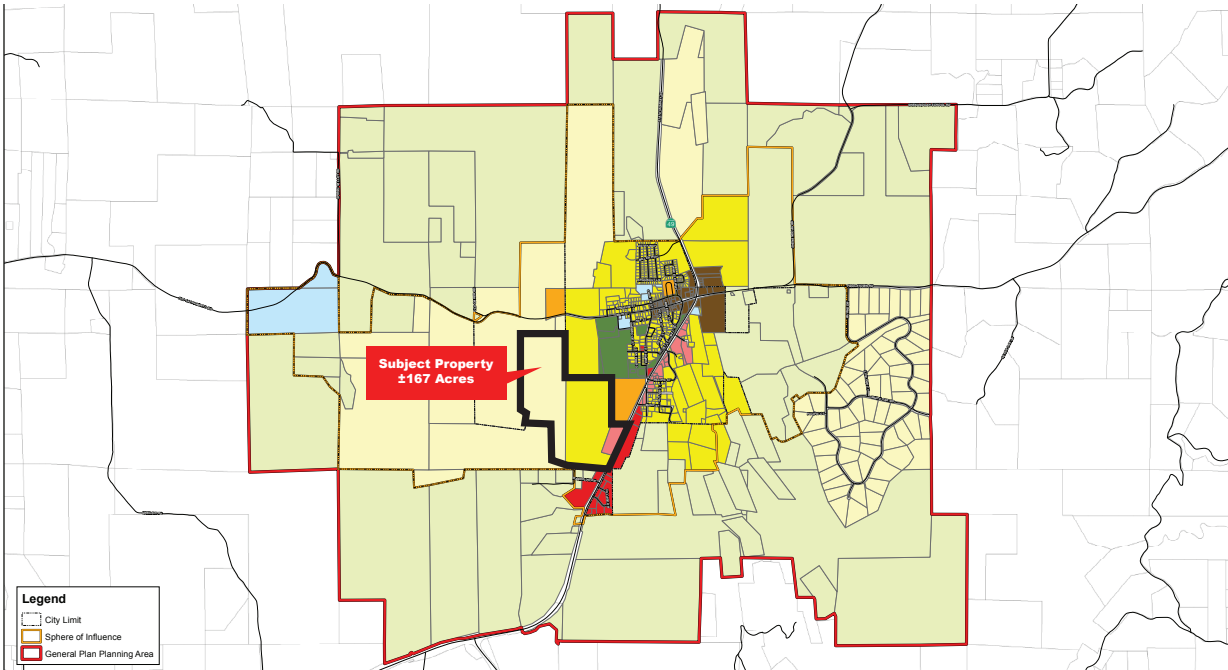
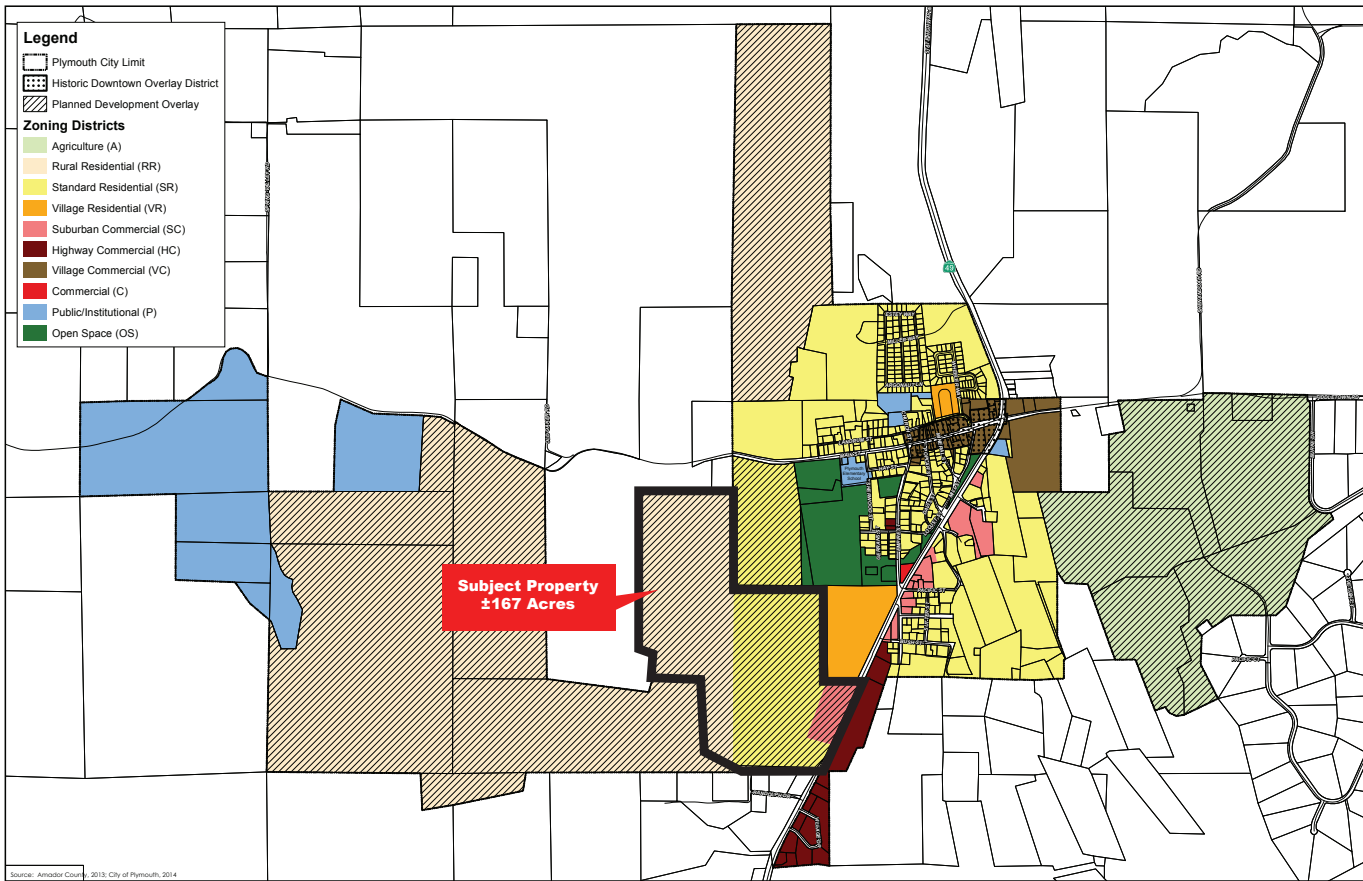
**Ken Noack, Jr.**  
916.569.2384

[knoack@ngkf.com](mailto:knoack@ngkf.com)

CA RE License #00777705

980 Ninth Street, Suite 2500  
Sacramento, CA. 95814

**FOR SALE  
GREILICH  
RANCH  
±167 Acres**



**Ken Noack, Jr.**  
916.569.2384  
[knoack@ngkf.com](mailto:knoack@ngkf.com)  
CA RE License #00777705

980 Ninth Street, Suite 2500  
Sacramento, CA. 95814

[www.ngkf.com](http://www.ngkf.com)

OREGON

IDAHO



# FOR SALE GREILICH RANCH ±167 Acres

**Ken Noack, Jr.**  
916.569.2384  
[knoack@ngkf.com](mailto:knoack@ngkf.com)  
CA RE License #00777705

**980 Ninth Street, Suite 2500  
Sacramento, CA. 95814**

[www.ngkf.com](http://www.ngkf.com)

The distributor of this communication is performing acts for which a real estate license is required. The information contained herein has been obtained from sources deemed reliable but has not been verified and no guarantee, warranty or representation, either express or implied, is made with respect to such information. Terms of sale or lease and availability are subject to change or withdrawal without notice.

